

Supplementary of the manuscript entitled “Long-term deceleration of glaciers in the eastern Nyainqentanglha Mountains, southeastern Tibetan Plateau, revealed from Landsat images” submitted to Water, contributed by Xiyu Fu, Jianmin Zhou.

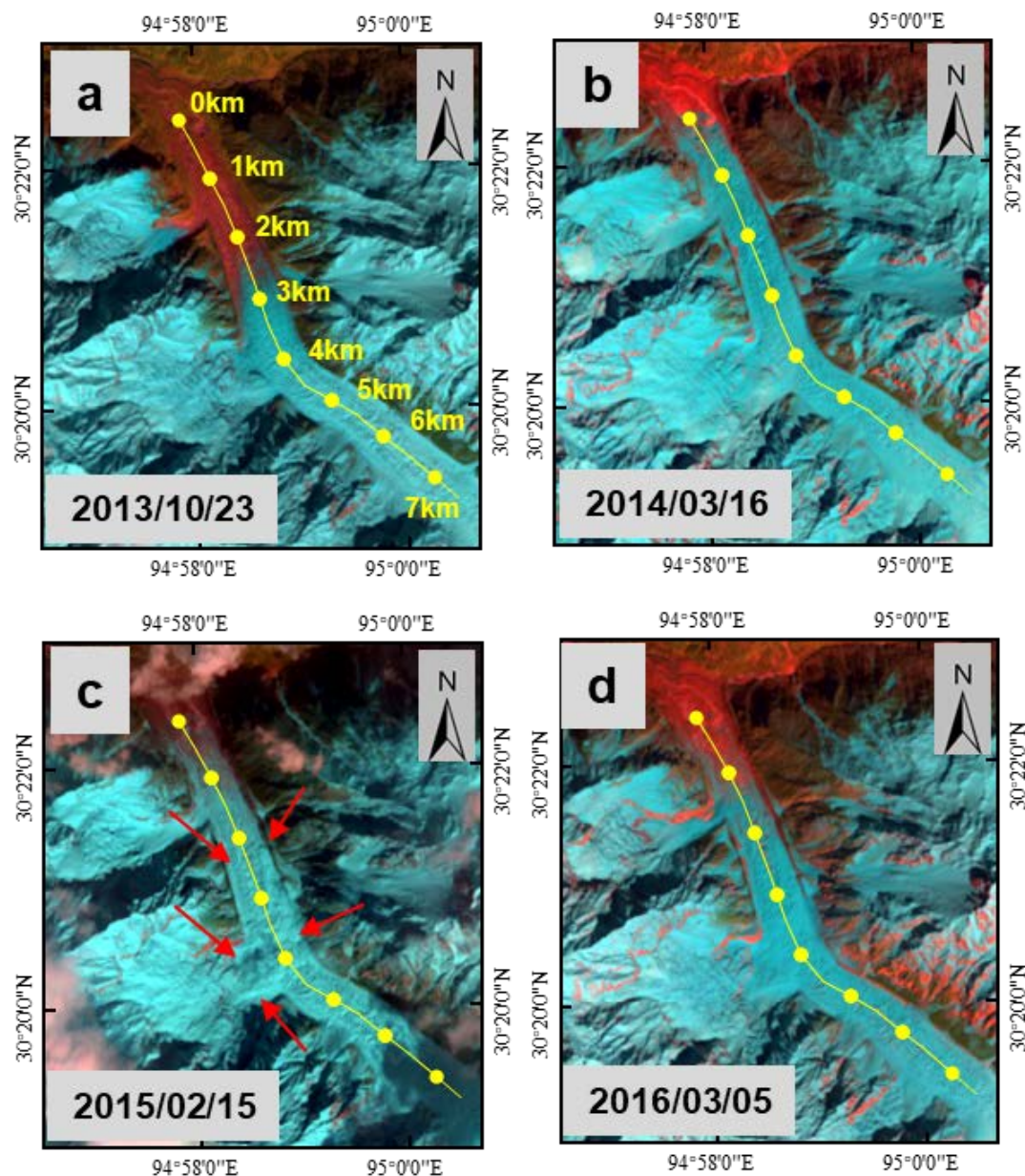


Figure S1. The surge of the tributary that induced the rise of velocity on the main truck during 2014-2016. The images are Landsat 8 band 6, 5, and 4 composite images. The yellow lines indicate the centreline of the glacier, and the yellow dots mark the 10 km distance from the terminus of the glacier. Red arrows mark the locations where the surge influenced.