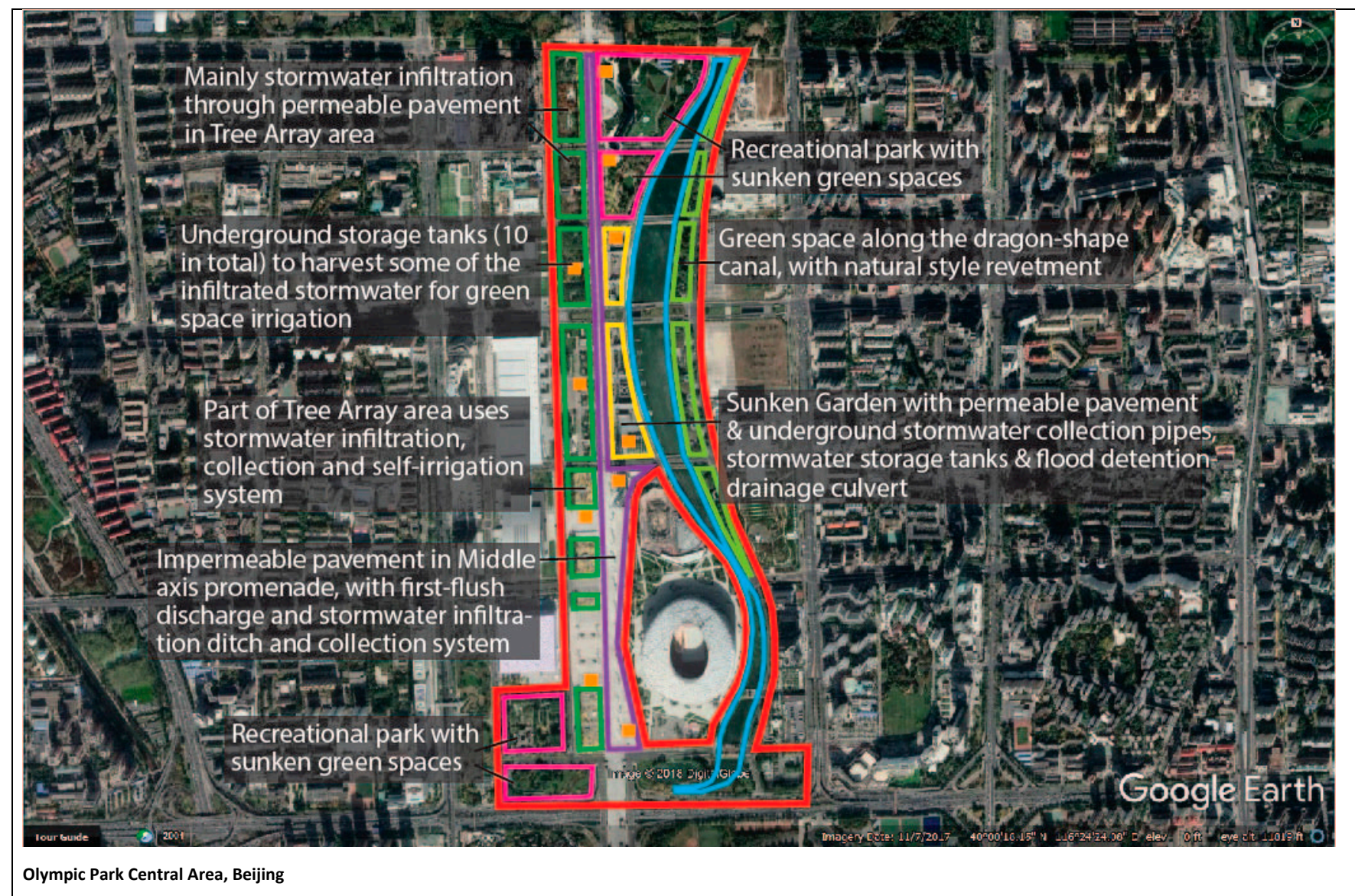


Table S1. Maps and photos of six municipality-led stormwater management pilot projects in Beijing and Copenhagen.





Olympic Park Central Area, Beijing







Shuangziyuan Residential Area, Beijing

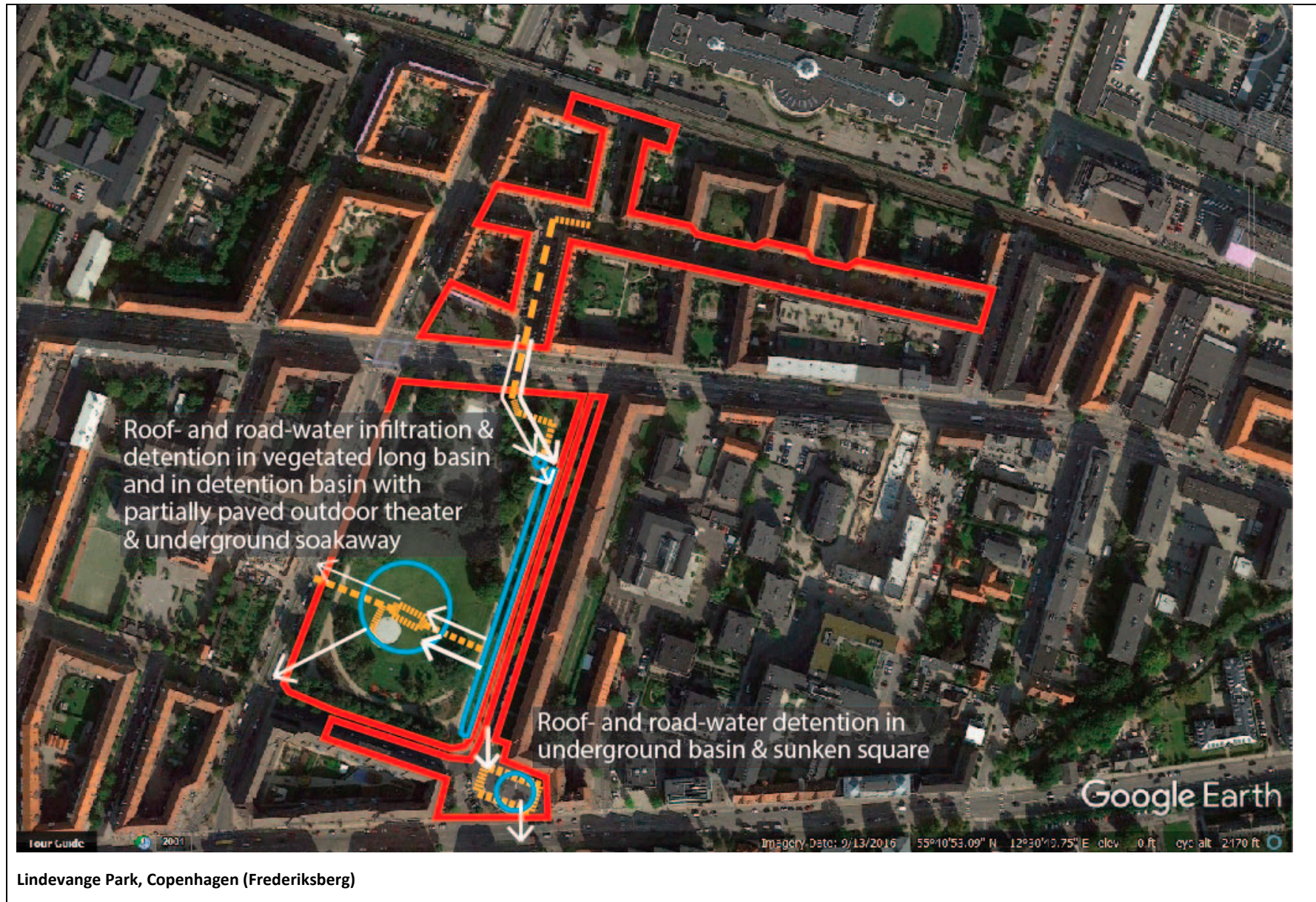






Beiwu Gravel Pit, Beijing





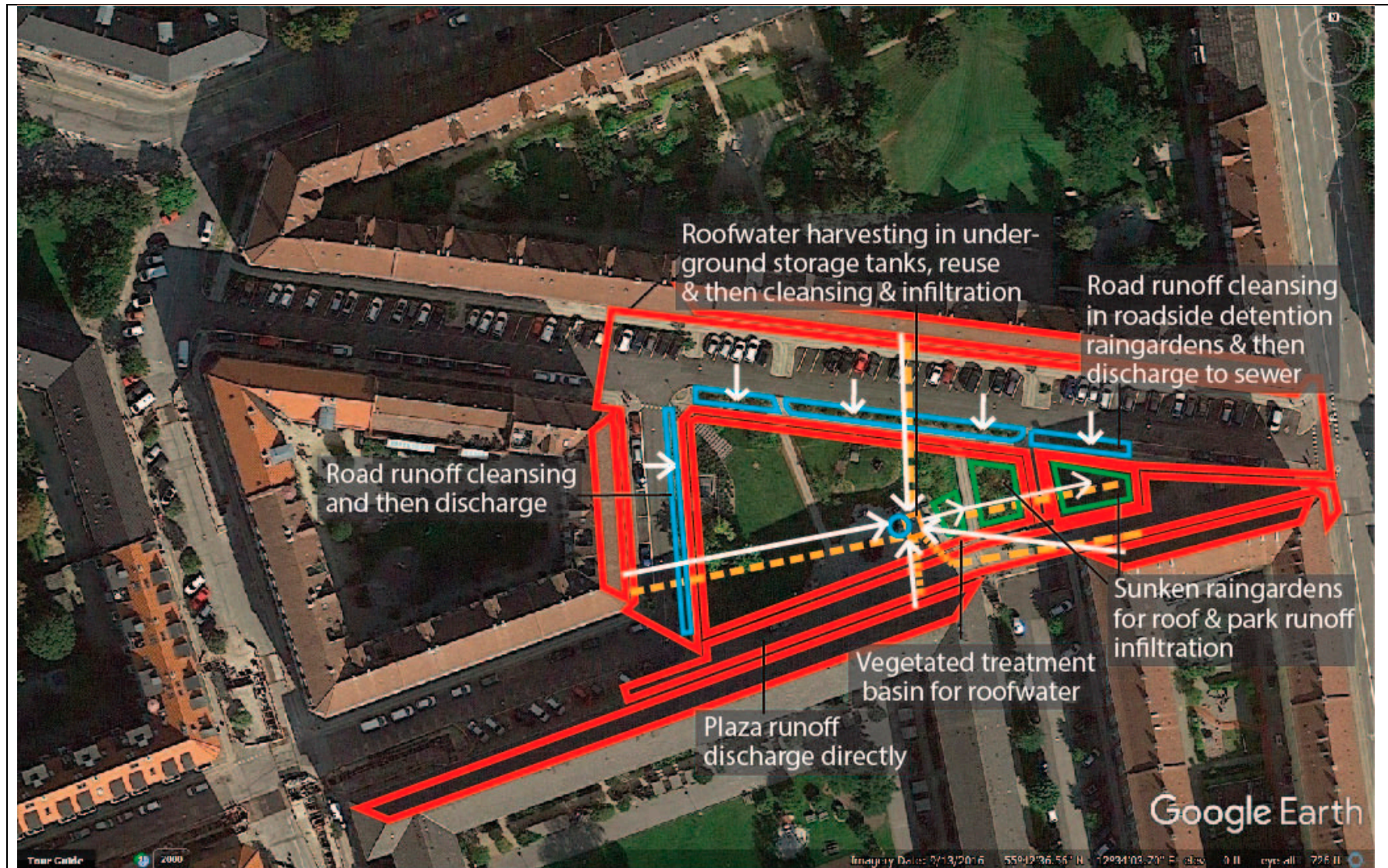
Supplementary material for Manuscript: Blue-Green Infrastructure for sustainable urban stormwater management – lessons from six municipality-led pilot projects in Beijing and Copenhagen



Lindevange Park, Copenhagen (Frederiksberg)



((Photo source: <https://www.loa-fonden.dk/projekter/2015/byens-vand-i-lindevangsparken-i-frederiksberg/>)

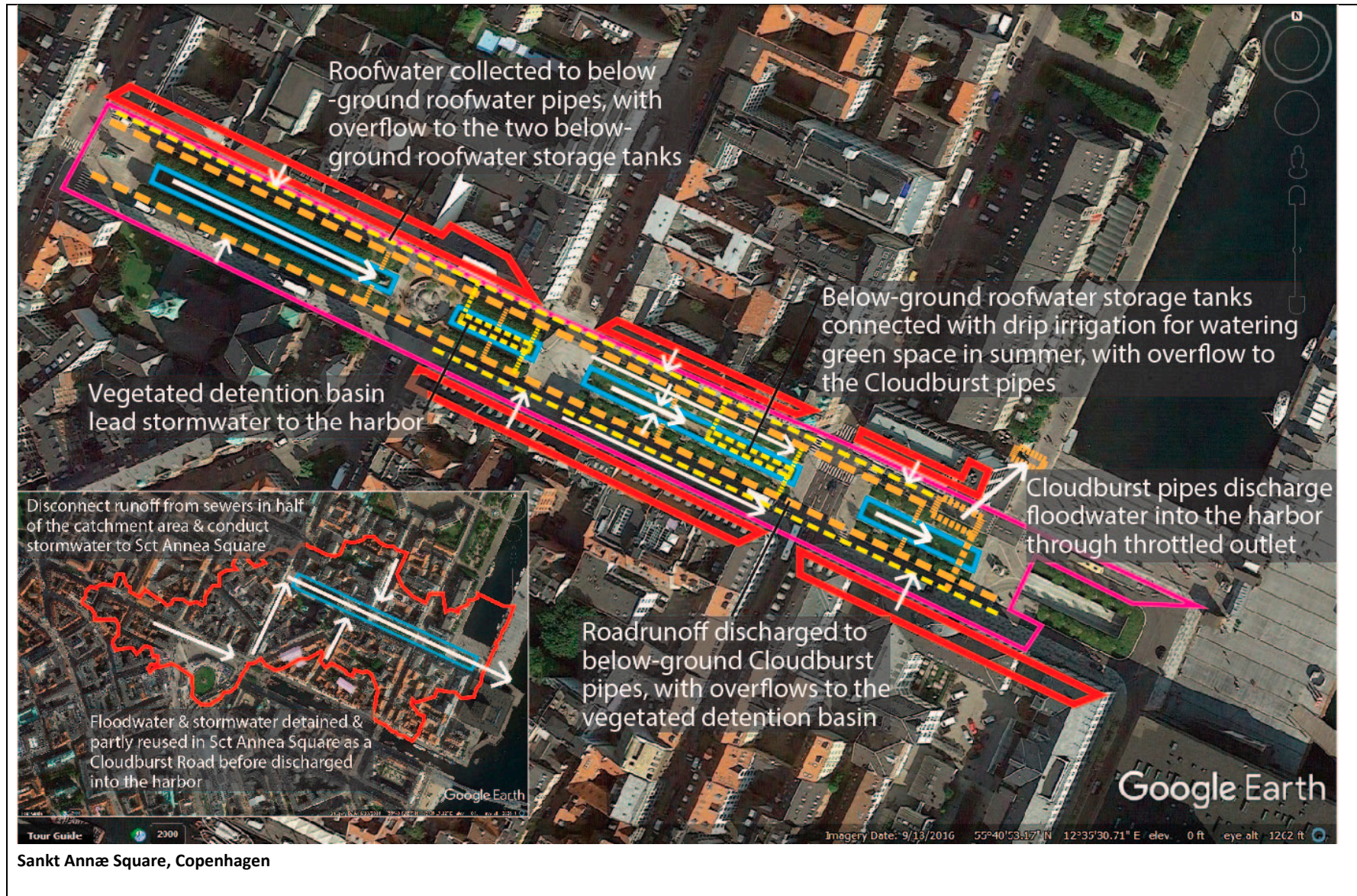


Tåsinge Square, Copenhagen



Tåsinge Square, Copenhagen







(Photo source: HOFOR)

Sankt Annæ Square, Copenhagen



(Photo source: HOFOR)