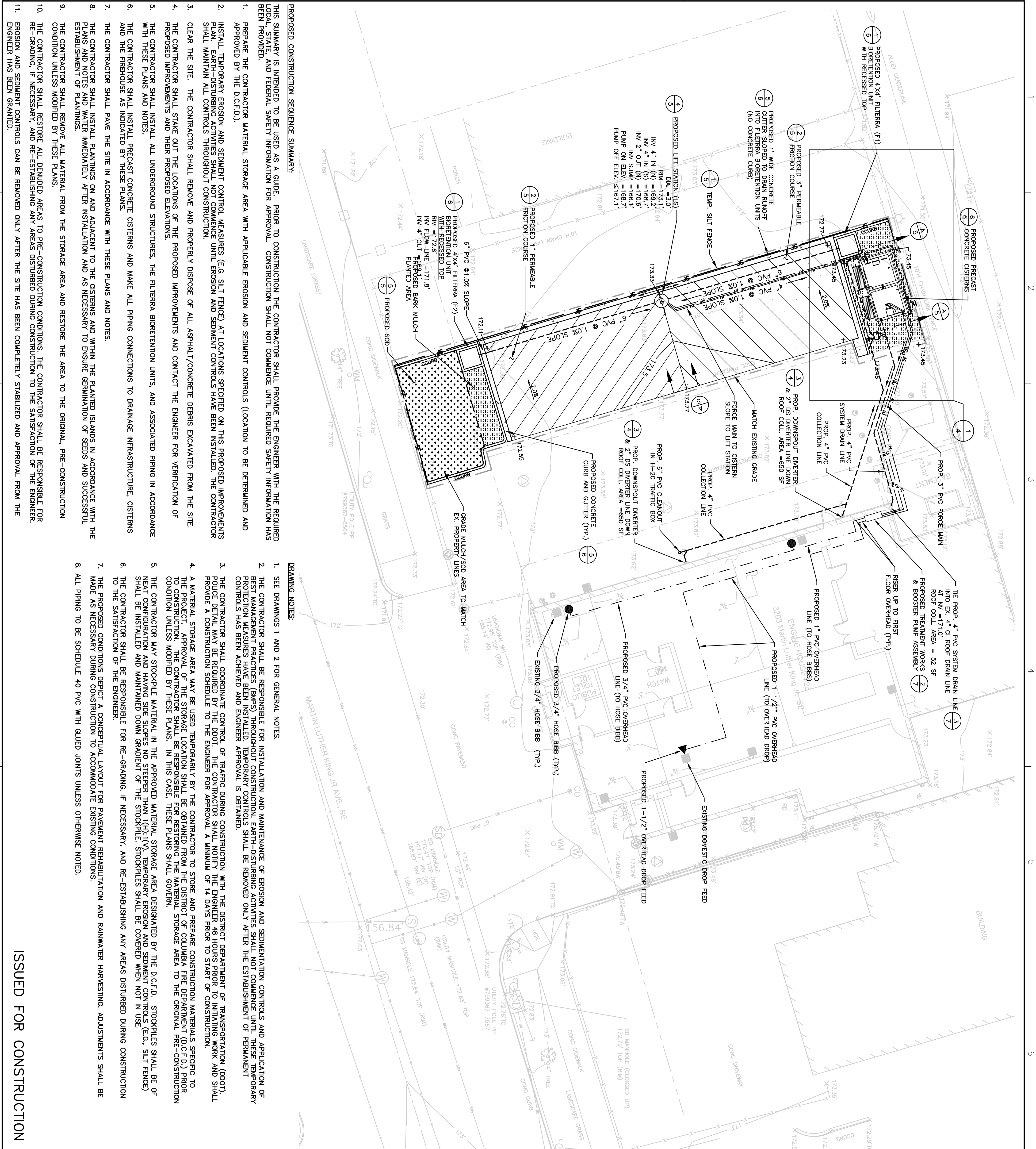


P:\PROJECTS\BW0158 - DDOE GREEN TANKS\CAD\ENGINE 25\BW0158-E25-0003



## PROPOSED CONSTRUCTION SEQUENCE SUMMARY:

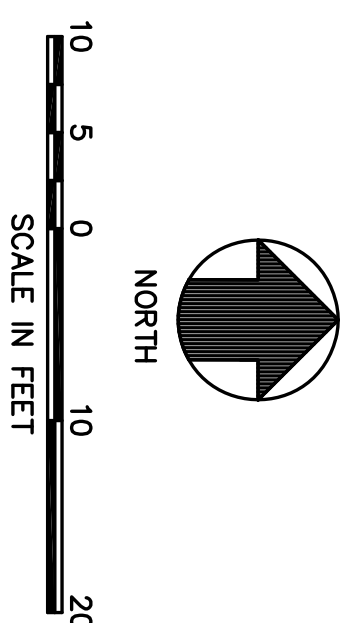
THIS SUMMARY IS INTENDED TO BE USED AS A GUIDE. PRIOR TO CONSTRUCTION THE CONTRACTOR SHALL PROVIDE THE ENGINEER WITH THE REQUIRED SAFETY INFORMATION FOR APPROVAL. CONSTRUCTION SHALL NOT COMMENCE UNTIL REQUIRED SAFETY INFORMATION HAS BEEN PROVIDED.

1. PREPARE THE CONTRACTOR MATERIAL STORAGE AREA WITH APPLICABLE EROSION AND SEDIMENT CONTROLS (LOCATION TO BE DETERMINED AND APPROVED BY THE D.C.F.D.).
2. INSTALL TEMPORARY EROSION AND SEDIMENT CONTROL MEASURES (E.G. SILT FENCE) AT LOCATIONS SPECIFIED ON THIS PROPOSED IMPROVEMENTS PLAN. EARTH-DISTURBING ACTIVITIES SHALL NOT COMMENCE UNTIL EROSION AND SEDIMENT CONTROLS HAVE BEEN INSTALLED. THE CONTRACTOR SHALL MAINTAIN ALL CONTROLS THROUGHOUT CONSTRUCTION.
3. CLEAR THE SITE. THE CONTRACTOR SHALL REMOVE AND PROPERLY DISPOSE OF ALL ASPHALT/CONCRETE DEBRIS EXCAVATED FROM THE SITE.
4. THE CONTRACTOR SHALL STAKE OUT THE LOCATIONS OF THE PROPOSED IMPROVEMENTS AND CONTACT THE ENGINEER FOR VERIFICATION OF PROPOSED IMPROVEMENTS AND THEIR PROPOSED ELEVATIONS.
5. THE CONTRACTOR SHALL INSTALL ALL UNDERGROUND STRUCTURES, THE FILTERBA BIORETENTION UNITS, AND ASSOCIATED PIPING IN ACCORDANCE WITH THESE PLANS AND NOTES.
6. THE CONTRACTOR SHALL INSTALL PRECAST CONCRETE CISTERNS AND MAKE ALL PIPING CONNECTIONS TO DRAINAGE INFRASTRUCTURE, CISTERNS AND THE FIREHOUSE AS INDICATED BY THESE PLANS.
7. THE CONTRACTOR SHALL PAVE THE SITE IN ACCORDANCE WITH THESE PLANS AND NOTES.
8. THE CONTRACTOR SHALL INSTALL PLANTINGS ON AND ADJACENT TO THE CISTERNS AND WITHIN THE PLANTED ISLANDS IN ACCORDANCE WITH THE PLANS AND NOTES AND WATER IMMEDIATELY AFTER INSTALLATION AND AS NECESSARY TO ENSURE GERMINATION OF SEEDS AND SUCCESSFUL ESTABLISHMENT OF PLANTINGS.
9. THE CONTRACTOR SHALL REMOVE ALL MATERIAL FROM THE STORAGE AREA AND RESTORE THE AREA TO THE ORIGINAL, PRE-CONSTRUCTION CONDITION UNLESS MODIFIED BY THESE PLANS.
10. THE CONTRACTOR SHALL RESTORE ALL DENuded AREAS TO PRE-CONSTRUCTION CONDITIONS. THE CONTRACTOR SHALL BE RESPONSIBLE FOR RE-GRADING, IF NECESSARY, AND RE-ESTABLISHING ANY AREAS DISTURBED DURING CONSTRUCTION TO THE SATISFACTION OF THE ENGINEER.
11. EROSION AND SEDIMENT CONTROLS CAN BE REMOVED ONLY AFTER THE SITE HAS BEEN COMPLETELY STABILIZED AND APPROVAL FROM THE ENGINEER HAS BEEN GRANTED.

**DRAWING NOTES:**

1. SEE DRAWINGS 1 AND 2 FOR GENERAL NOTES.
2. THE CONTRACTOR SHALL BE RESPONSIBLE FOR INSTALLATION AND MAINTENANCE OF EROSION AND SEDIMENTATION CONTROLS AND APPLICATION OF BEST MANAGEMENT PRACTICES (BMPs) THROUGHOUT CONSTRUCTION. EARTH-DISTURBING ACTIVITIES SHALL NOT COMMENCE UNTIL THESE TEMPORARY PROTECTION MEASURES HAVE BEEN INSTALLED. TEMPORARY PROTECTION MEASURES SHALL BE REMOVED ONLY AFTER THE ESTABLISHMENT OF PERMANENT PROTECTION HAS BEEN ACHIEVED AND ENGINEER APPROVAL IS OBTAINED.
3. THE CONTRACTOR SHALL COORDINATE CONTROL OF TRAFFIC DURING CONSTRUCTION WITH THE DISTRICT DEPARTMENT OF TRANSPORTATION (DDOT). POLICE DETAIL MAY BE REQUIRED BY THE DDOT. THE CONTRACTOR SHALL NOTIFY THE ENGINEER 48 HOURS PRIOR TO INITIATING WORK AND SHALL PROVIDE A CONSTRUCTION SCHEDULE TO THE ENGINEER FOR APPROVAL A MINIMUM OF 14 DAYS PRIOR TO START OF CONSTRUCTION.
4. A MATERIAL STORAGE AREA MAY BE USED TEMPORARILY BY THE CONTRACTOR TO STORE AND PREPARE CONSTRUCTION MATERIALS SPECIFIC TO THE PROJECT. APPROVAL OF THE STORAGE LOCATION SHALL BE OBTAINED FROM THE DISTRICT OF COLUMBIA FIRE DEPARTMENT (D.C.F.D.) PRIOR TO CONSTRUCTION. APPROVAL OF THE STORAGE AREA SHALL BE OBTAINED FROM THE DISTRICT OF COLUMBIA DEPARTMENT OF THE ENVIRONMENT (D.C.D.E.) PRIOR TO CONSTRUCTION UNLESS MODIFIED BY THESE PLANS. IN THIS CASE, THESE PLANS SHALL GOVERN.
5. THE CONTRACTOR MAY STOCKPILE MATERIAL IN THE APPROVED MATERIAL STORAGE AREA DESIGNATED BY THE D.C.F.D. STOCKPILES SHALL BE OF NEAT CONFIGURATION AND HAVING SIDE SLOPES NO STEEPER THAN 1(H):1(V). TEMPORARY EROSION AND SEDIMENT CONTROLS (E.G., SILT FENCE) SHALL BE INSTALLED AND MAINTAINED DOWN GRADIENT OF THE STOCKPILE. STOCKPILES SHALL BE COVERED WHEN NOT IN USE.
6. THE CONTRACTOR SHALL BE RESPONSIBLE FOR RE-GRADING, IF NECESSARY, AND RE-ESTABLISHING ANY AREAS DISTURBED DURING CONSTRUCTION TO THE SATISFACTION OF THE ENGINEER.
7. THE PROPOSED CONDITIONS DEPICT A CONCEPTUAL LAYOUT FOR PAVEMENT REHABILITATION AND RAINWATER HARVESTING. ADJUSTMENTS SHALL BE MADE AS NECESSARY DURING CONSTRUCTION TO ACCOMMODATE EXISTING CONDITIONS.
8. ALL PIPING TO BE SCHEDULE 40 PVC WITH GLUED JOINTS UNLESS OTHERWISE NOTED.

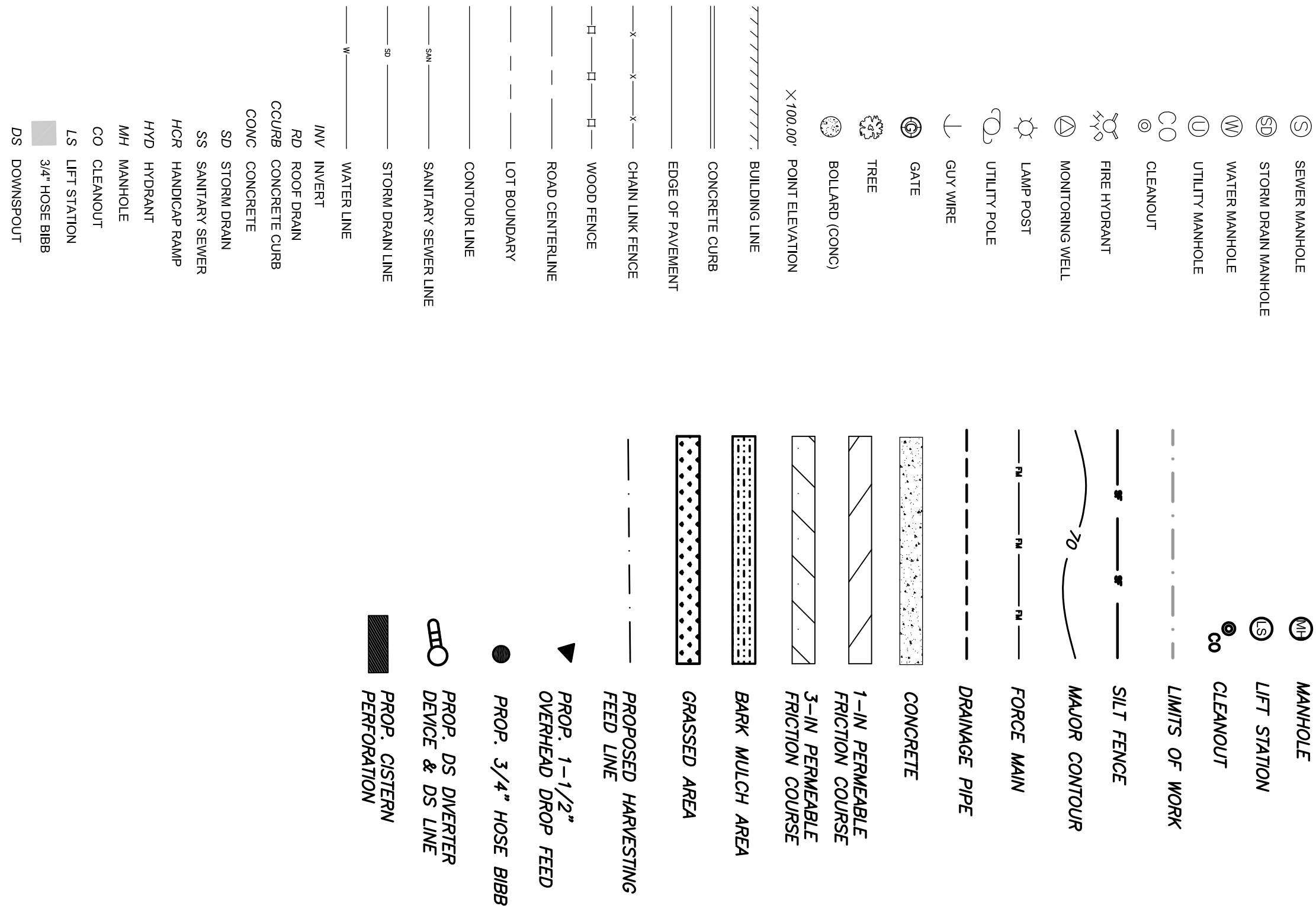
ISSUED FOR CONSTRUCTION




## LEGEND

**EXISTING CONDITIONS**

PROPOSED CONDITIONS




1	11/19/2010	ISSUED FOR CONSTRUCTION		JB	MO
0	9/01/2010	PERMIT SET		JB	MO
REV	DATE	DESCRIPTION		DRN	APP



**Geosyntec**  
consultants

1330 BEACON STREET, SUITE 317  
BOSTON, MA 02216  
PHONE: 617/234-4438



**DDOE**  
DEPARTMENT  
OF THE ENVIRONMENT

1200 FIRST STREET, NE, 8TH FLOOR  
BOSTON, MA 02102  
PHONE: 202-535-2800

## PROPOSED IMPROVEMENTS

### DDOE GREEN TANKS PROJECT

PROJECT: \_\_\_\_\_

SITE: \_\_\_\_\_

PROJECT: \_\_\_\_\_

SITE: \_\_\_\_\_

## D.C.F.D. ENGINE #25 FIREHOUSE DESIGNS

DESIGN BY: **MO/AB/PR**

DRAWN BY: **JOC**

CHECKED BY: **AB**

REVIEWED BY: **PR**

APPROVED BY: **MO**

DATE: **11/19/2010**

PROJECT NO.: **BW0158**

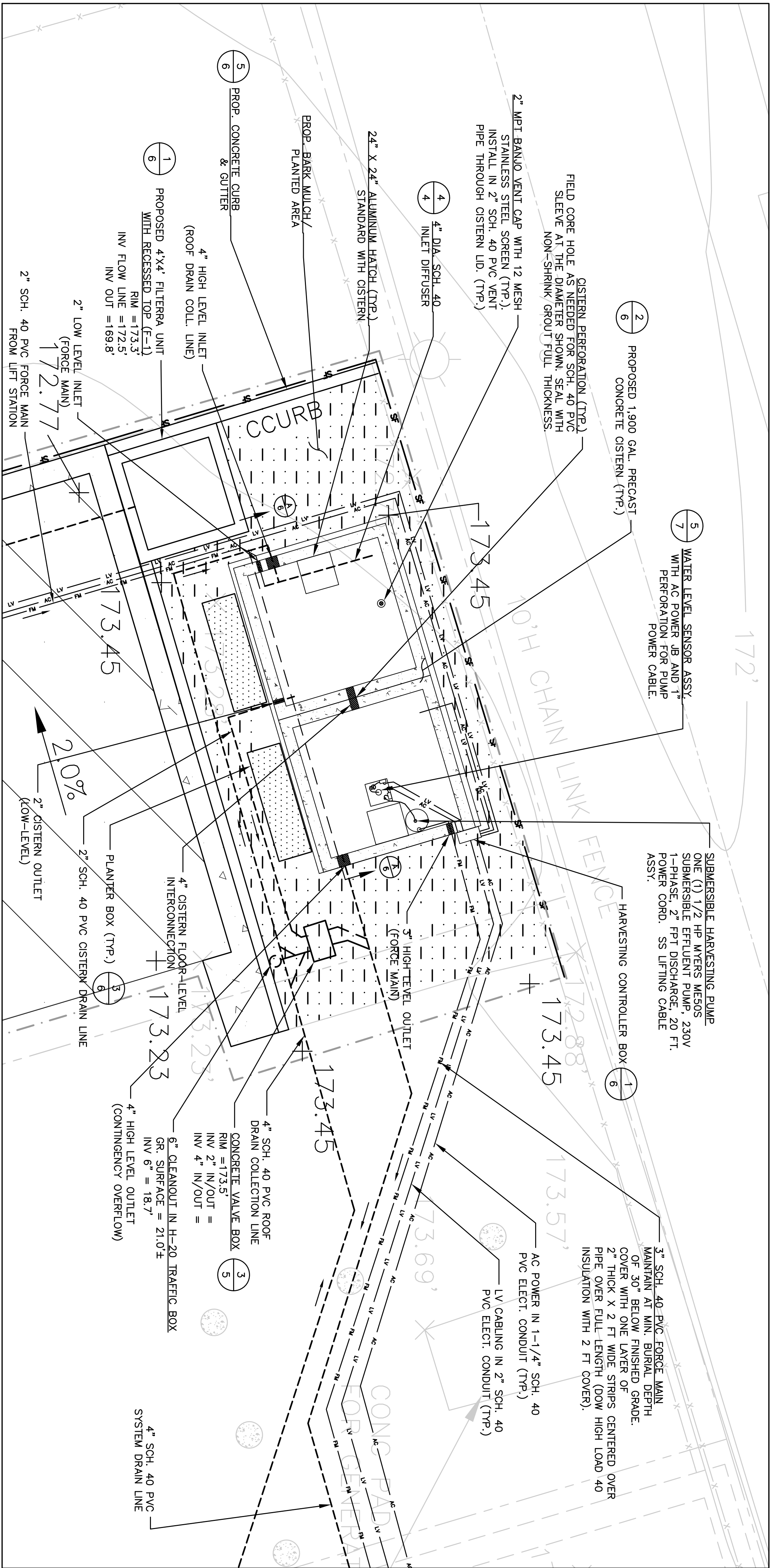
FILE: **BW0158-E25-0003**

DRAWING NO.: \_\_\_\_\_

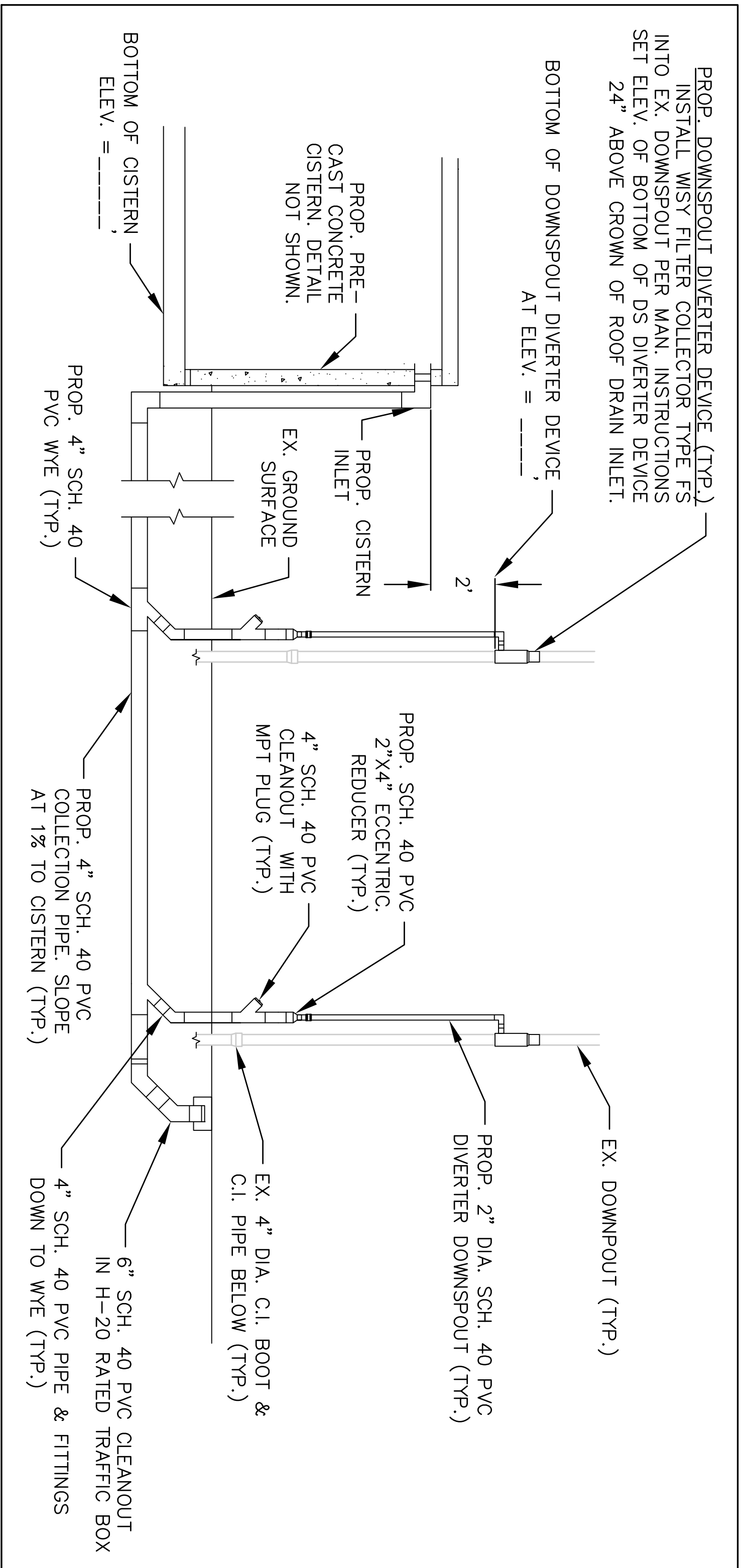
**3** OF **8**

THIS DRAWING MAY NOT BE ISSUED FOR PROJECT ENGINE OR FOR CONSTRUCTION, UNLESS SEALED





1  
3  
DETAIL  
CISTERN EXPANDED VIEW  
HORIZONTAL SCALE: 1" = 3'



2  
3  
SCHEMATIC PROFILE/ELEVATION  
DOWNSPOUT DIVERTER DEVICE & LINE  
NOT TO SCALE

1	11/19/2010	ISSUED FOR CONSTRUCTION	JB	MO
0	9/01/2010	PERMIT SET		
REV	DATE	DESCRIPTION	JB	MO
			DRI	APP

**Geosyntec**  
consultants



1330 BEACON STREET, SUITE 317  
BROOKLINE, MASSACHUSETTS 02246 USA  
PHONE: 617.734.4436

TITLE: **EXPANDED LAYOUT & SCHEMATIC PROFILE/ELEVATION**

PROJECT: **DDOE GREEN TANKS PROJECT**

SITE: **D.C.F.D. ENGINE #25 FIREHOUSE DESIGNS**

THIS DRAWING MAY NOT BE ISSUED FOR PROJECT TENDER OR CONSTRUCTION, UNLESS SEALED.

DESIGN BY: <b>MO/AB/PR</b>	DATE: <b>11/19/2010</b>
DRAWN BY: <b>JOC</b>	PROJECT NO.: <b>BW0156</b>
CHECKED BY: <b>AB</b>	FILE: <b>BW0156-E25-0003</b>
REVIEWED BY: <b>PR</b>	DRAWING NO.: <b>4</b> OF <b>8</b>
APPROVED BY: <b>MO</b>	

1 INCH  
AT FULL SCALE PLOT

P:\PROJECTS\BW0156 - DDOE GREEN TANKS\CAO\ENGINE 25\BW0156-E25-0003

ISSUED FOR CONSTRUCTION