

## Article

# Cannibalism and Habitat Selection of Cultured Chinese Mitten Crab: Effects of Submerged Aquatic Vegetation with Different Nutritional and Refuge Values

Qingfei Zeng <sup>1,\*</sup>, Erik Jeppesen <sup>2,3</sup>, Xiaohong Gu <sup>1,\*</sup>, Zhigang Mao <sup>1</sup> and Huihui Chen <sup>1</sup>

<sup>1</sup> State Key Laboratory of Lake Science and Environment, Nanjing Institute of Geography and Limnology, Chinese Academy of Sciences, Nanjing 210008, China; zgmao@niglas.ac.cn (Z.M.); hhchen@niglas.ac.cn (H.C.)

<sup>2</sup> Department of Bioscience, Aarhus University, Vejløvej 25, 8600 Silkeborg, Denmark; ej@bios.au.dk

<sup>3</sup> Sino-Danish Centre for Education and Research, University of CAS, Beijing 100190, China

\* Correspondence: qfzeng@niglas.ac.cn (Q.Z.); xhgu@niglas.ac.cn (X.G.)

Received: 26 September 2018; Accepted: 26 October 2018; Published: 29 October 2018



**Abstract:** We examined the food preference of Chinese mitten crabs, *Eriocheir sinensis* (H. Milne Edwards, 1853), under food shortage, habitat choice in the presence of predators, and cannibalistic behavior by comparing their response to the popular culture plant *Elodea nuttallii* and the structurally more complex *Myriophyllum verticillatum* L. in a series of mesocosm experiments. Mitten crabs were found to consume and thus reduce the biomass of *Elodea*, whereas no negative impact on *Myriophyllum* biomass was recorded. In the absence of adult crabs, juveniles preferred to settle in *Elodea* habitats (appearance frequency among the plants:  $64.2 \pm 5.9\%$ ) but selected for *Myriophyllum* instead when adult crabs were present (appearance frequency among the plants:  $59.5 \pm 4.9\%$ ). The mortality rate of mitten crabs in the absence of plant shelter was higher under food shortage, primarily due to cannibalism. The proportion of molting crabs dying in the structurally more complex *Myriophyllum* habitats was significantly lower than in the less complex *Elodea* habitats, indicating that *Myriophyllum* provides better protection from cannibalistic behavior, likely due to its structurally more complex canopy. Stable isotope analyses of crab samples revealed a trophic shift in both  $\delta^{13}\text{C}$  and  $\delta^{15}\text{N}$  ( $\Delta\delta^{13}\text{C}$ : 2.2–4.0‰;  $\Delta\delta^{15}\text{N}$ : 1.5–2.8‰) during the experimental period. Significant positive correlations between body mass and  $\delta^{13}\text{C}$  and  $\delta^{15}\text{N}$  were recorded, suggesting that cannibalistic feeding might further increase crab growth and lead to ontogenetic increases in trophic position with increasing size. Our study overall demonstrates that a combination of submerged aquatic vegetation functioning as a highly suitable food with other less palatable plant species acting as efficient refuges against predators may be the optimal method of plant stocking in mitten crab aquacultures to ensure both high crab growth and a high survival rate.

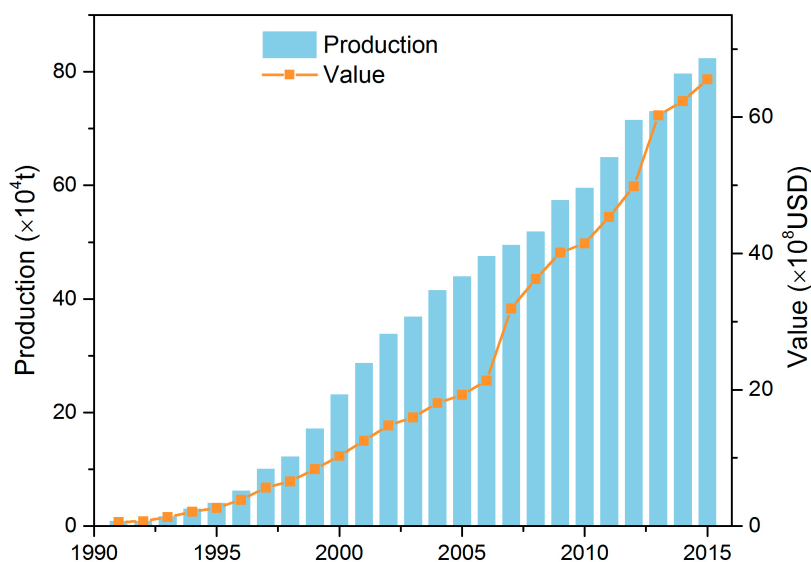
**Keywords:** cannibalistic behavior; *Elodea nuttallii*; *Myriophyllum verticillatum* L.; crab culture; stable isotope

## 1. Introduction

Cannibalism occurs frequently in natural and cultured populations of decapod crustaceans [1,2] and inter-cohort cannibalism plays a major role in controlling population size and structure [3]. Various factors may influence the extent and rate of cannibalism, including: (1) food availability [4,5], (2) crustacean density [6–9], (3) habitat structural complexity [2,10], and (4) prey vulnerability [7,11]. During ecdysis, crustaceans are especially vulnerable to predation and/or cannibalism [11,12].

Numerous predator-prey studies have demonstrated that habitat complexity significantly reduces the effects of cannibalism [2,6,7,13,14] and the presence of multiple shelters has been shown to proportionally increase the survival of juvenile blue-swimmer crabs, *Portunus pelagicus* [1]. Furthermore, both blue king crab, *Paralithodes platypus*, and red king crab, *Paralithodes camtschaticus*, have demonstrated a preference for complex habitats [6,7,15]. Moreover, investigations have revealed that the rates of cannibalism of Age-1 red king crab on Age-0 specimens decreased in macroalgae refuges [13,14]. A high refuge effect seems to, therefore, reduce predator movement and aggressive activity, increase the duration of resting, and allow the prey to move vertically and horizontally to avoid predation [7,16,17].

Chinese mitten crab, *Eriocheir sinensis* (H. Milne Edwards 1853), is an invasive species in North America and Europe, and due to the generally low concentration of heavy metals in these areas, it is intensively fished for consumption, which contributes to the control of populations. In China, Japan, Korea, and other parts of the world, mitten crab is regarded as a delicacy because of its high quality and tasty flesh, and it is, therefore, of great commercial value [18]. In China, the yield and value of the species have grown steeply from 1991 to 2015, from  $8.4 \times 10^3$  t in 1991 to  $8.2 \times 10^5$  t in 2015, with an estimated value of  $6.0 \times 10^7$  United States Dollars (USD) in 1991 to  $6.5 \times 10^9$  USD in 2015 [19] (Figure 1). However, extensive mortality occurring in the period from stocking to harvesting, especially during the early stages of development, has diminished the yields of cultivated populations [2,20], and field studies have shown that cannibalism is a major problem in the commercial production of Chinese mitten crabs. Aquaculture systems are characterized by high stocking densities, lack of alternative live food, and absence of natural refuges [21], all conditions that are likely to promote cannibalism. Many studies of marine crabs suggest that the presence of suitable shelters for the intermolt and/or newly molted crabs may decrease the cannibalism [1,2]. Yet, so far, only a few studies have specifically addressed the cannibalistic behavior of freshwater mitten crab and how submerged vegetation affects interspecific interactions [18,20,22].



**Figure 1.** Trends in the production ( $\times 10^4$  t) and value ( $\times 10^8$  United States Dollars (USD)) of Chinese mitten crab cultures from 1991 to 2015 in China (based on data from FAO (Food and Agriculture Organization of the United Nations) 2016 and China fishery statistics yearbooks from 2012 to 2016).

Macrophytes serve as both a natural food source and a refuge for mitten crabs during molting [18]. At present, *Elodea nuttallii* is usually planted in the middle and lower reaches of the Yangtze River for mitten crab production due to its high colonization ability and faster growth under eutrophic conditions [23,24]. *Myriophyllum verticillatum* L. is used less frequently in crab aquacultures; its more finely dissected leaves compared to those of *Elodea* may increase the structural complexity of the habitat

and thus act as a refuge, more than *Elodea*, for young crabs from cannibalism [25]. However, it is not well known how the two plants affect the intraspecific interaction and habitat choice of the crabs.

In this study, we examined whether mitten crabs would select for *Elodea* under conditions of food shortage in cultures also including *Myriophyllum* and how predator presence altered the habitat choice of juvenile crabs. Moreover, a relatively long-term interaction experiment using stable isotope analysis was conducted to determine how the two plant species affected the growth, survival, and cannibalistic behavior of the juveniles. We hypothesized that the mitten crabs would prefer *Elodea* over *Myriophyllum* as a food source, but that juvenile crabs would preferentially use the structurally complex *Myriophyllum* to avoid cannibalism when threatened by adult crabs or when occurring in high densities.

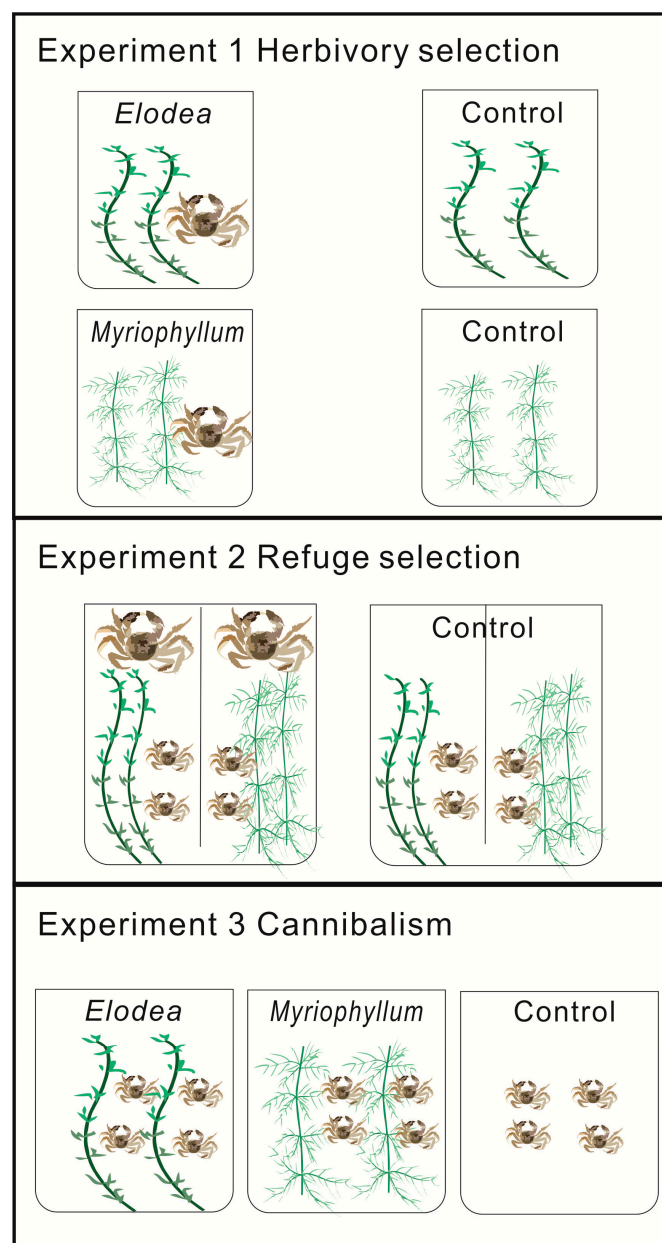
## 2. Materials and Methods

### 2.1. Experimental Setup

This study comprised three elements: (1) a herbivory selection experiment, (2) a refuge selection experiment, and (3) a cannibalism experiment (Figure 2). All experiments were conducted in 2015 at Guchenghu Lake Aquaculture Research Center, located in the reclamation area of Guchenghu Lake (31.2287–31.3148 N, 118.8794–118.9655 E), Jiangsu Province, China.

All crabs were collected from a local mitten crab farm in the reclamation area of Guchenghu Lake. Prior to the experiment, the crabs were acclimated separately to tank culture conditions in 64  $\mu\text{m}$  filtered pond water for 1 week during which they were fed with a commercial feed (36% crude protein, 6% crude lipid from Shuaifeng, Nanjing, China) once daily at 17:00. (in an amount equivalent to 8% of their body weight). Only active and similar-sized crabs were used in the experiments. Large male adults ( $70.3 \pm 0.03$  mm in carapace width) were used as predators as they have a larger and stronger chela than the smaller juveniles [26]. Coin-sized crabs (generally 15–40 mm in carapace width) were chosen as juveniles ( $20.9 \pm 0.04$  mm in carapace width) [27]. The experimental plants, *Elodea nuttallii* and *Myriophyllum spicatum* L., were removed by hand as whole plants from local aquaculture ponds. All plant materials (dead leaves and stems) were rinsed with tap water prior to the experiment, and the plants were acclimated for 24 h in a container filled with 64  $\mu\text{m}$  filtered pond water.

The experiments were conducted in 500 L outdoor polypropylene tanks (diameter = 110 cm, height = 125 cm) with moderate aeration. High water quality was maintained by daily exchange of 50% of the water volume with fresh 64  $\mu\text{m}$  filtered pond water. The water level in the tanks was set to 75 cm, leaving adequate space above the water to prevent the crabs from escaping. Mixed tap water-rinsed sands and stones in a 2 cm layer were used to root the plants. During the experiment, the water pH varied between 8.05 and 8.15, dissolved oxygen was  $>5$  mg L<sup>-1</sup>, ammonia nitrogen ranged from 0.12 to 0.21 mg L<sup>-1</sup> and phosphate phosphorus from 0.04 to 0.05 mg L<sup>-1</sup>. Uneaten feed and feces were removed once a day. Temperature, pH, and dissolved oxygen were measured in situ using a Yellow Springs Instruments (YSI, Inc., Yellow Springs, OH, USA) 6600 multi-sensor sonde. Ammonia nitrogen, and phosphate phosphorus concentrations were determined using standard methods [28].



**Figure 2.** Experimental design. In all experiments, each treatment consisted of three replicates. Experiment 1: One adult crab was put in each tank for 10 days. Tanks without adult crabs served as controls. Experiment 2: One adult crab and five juveniles were put in each side of the tank for 7 days. Tanks without adult crabs served as controls. Experiment 3: Twenty juveniles were put in each tank for 60 days. Tanks without plants served as controls.

## 2.2. Herbivory Selection Experiment

To assess whether the crabs exhibited a feeding preference for one of the two plant species, we randomly picked one adult crab from the acclimation container and placed it in the *Elodea* and *Myriophyllum* tanks, respectively (Figure 2). Tanks without crabs served as controls (all in three replicates). The experiments were run from 4 to 13 February 2015. A thermostat-regulated immersion heater was used to maintain a constant temperature ( $14.3 \pm 1.5$  °C). During the experimental period, the crabs were not fed. A total of 20 g wet weight of *Elodea* was randomly selected and added to six tanks, and the same was done for *Myriophyllum*. After ten days, all plant material was removed from

the tanks, and wet weight was determined after absorbing the surface water with absorbent paper for 30 s. The percentage change in wet weight was calculated as  $100 \times (\text{final} - \text{initial})/\text{initial}$ .

### 2.3. Refuge Selection Experiment

Experiment 2 aimed to explain whether juveniles still preferred *Elodea* over *Myriophyllum* in the presence of an adult crab (Figure 2). The experiments were run from 26 February to 4 March 2015 at a temperature of  $14.3 \pm 1.5$  °C. Six 500 L tanks were divided into two similar-sized halves with plastic lattice (diameter = 6 mm mesh). A small hole (diameter = 50 mm) was cut under the plastic lattice, allowing the juveniles, but not the adult crab, to move freely through the partition. A total of 50 g of *Elodea* and 50 g of *Myriophyllum* were grown in opposite sides of each tank. Ten juvenile crabs were placed in each tank, five on each side. In three tanks, one adult crab was placed in each side of the tank, whereas the remaining three tanks held no adult crabs and served as controls. During the experiment, the number of juveniles on each side of the tanks was counted five times a day for a period of seven days. No mortality was recorded during the experiment. The appearance frequency among the plants was calculated as  $100 \times (\sum I_i / 10) / 7$ , where  $I_i$  is the average juvenile crab number among plants per side per day. Juveniles hiding in the sand and not among the plants were not included in the data. During the experiment, the crabs were fed with a commercial feed once a day (with an amount equivalent to 8% of their body weight).

### 2.4. Cannibalism Experiment

The third and longest experiment served to test whether different kinds of plants may help diminish the cannibalistic behavior of juvenile crabs (Figure 2). The experiments were run from 9 March to 7 May 2015 at a temperature of  $18.8 \pm 1.5$  °C. A total of 180 juveniles were randomly assigned to three treatment groups: *Elodea*, *Myriophyllum*, and no plants. There were 60 individuals per treatment (at a density of  $21 \text{ ind. m}^{-2}$ ), equally divided between three tanks. A total of 100 g of *Elodea* and 100 g of *Myriophyllum* were grown in each tank in the *Elodea* and *Myriophyllum* treatments, respectively. During the experiment, crabs were fed with a commercial feed once a day (in an amount equivalent to 2% of their body weight).

The number of dead juveniles was counted at 18:00 each day, and total crab mortality was calculated after a period of 15 days. The mortality rate was obtained using an exponential loss model,  $p = e^{-mt}$ , where  $p$  is the probability of death,  $m$  is the mortality rate expressed per day ( $\text{d}^{-1}$ ), and  $t$  is time (d) [7]. Uneaten feed and feces were removed once a day and dead crabs every second day to ensure that the live juveniles had sufficient time for consumption. Crab molting was observed from Day 18 to 40. The number of dead juveniles in the molting stages was recorded for two separate periods (Day 15–30 and Day 30–45). The proportion of dead crabs in the molting stages was obtained using the formula:

$$\text{death due to molting (\%)} = \frac{\text{dead juvenile individuals in the molting stages}}{\text{total experimental crabs}} \times 100$$

In order to maintain calcium and phosphorus levels during crab molting, a mixed solution of 5 g of  $\text{CaCl}_2$  and 2.5 g of  $\text{Na}_2\text{HPO}_4$  was added to each tank twice a week. The nutrient levels chosen were similar to those applied by local aquacultures. The wet weight of all the plant material at the end of the experiment was evaluated according to the method in Section 2.2.

In the beginning and then every 15 days, one crab from each tank (3 replicates per treatment) was randomly sampled for recording of carapace width, wet body mass, and  $\delta^{13}\text{C}$  and  $\delta^{15}\text{N}$  signatures. Crab growth rates were expressed as specific growth rates (SGR) based on the formula,  $\text{SGR} = [(\ln W_f - \ln W_i) \times 100] / T$ , where  $W_f$  is final weight (g),  $W_i$  is initial weight (g), and  $T$  is experiment time (days). Pereiopods, chelipeds, and ventral muscle tissue were gently removed for stable isotope analysis. All the samples were freeze-dried and ground into powder. Carbon and

nitrogen isotope ratios were determined at Nanjing Institute of Geography and Limnology using a Flash EA1112 elemental analyzer coupled to a Thermo Finnigan MAT Delta plus dual-inlet continuous flow isotope ratio mass spectrometer. Stable isotope ratios were expressed in conventional  $\delta$  notation as parts per mill (‰) according to the following equation:

$$\delta X = [(R_{\text{sample}}/R_{\text{standard}}) - 1] \times 100 \quad (1)$$

where X is  $^{13}\text{C}$  or  $^{15}\text{N}$  and  $R_{\text{sample}}$  is the corresponding ratio  $^{13}\text{C}/^{12}\text{C}$  or  $^{15}\text{N}/^{14}\text{N}$ .  $R_{\text{standard}}$  values were based on Vienna Pee Dee Belemnite (VPDB) for carbon and atmospheric  $\text{N}_2$  for nitrogen. The precision of the isotope analyses was 0.1‰ for both carbon and nitrogen.

### 2.5. Statistical Analysis

The change in plant wet weight (Experiment 1) and frequency of crab presence among plants (Experiment 2) were analyzed with two-way ANOVA and simple main effects analysis (Experiment 2) where the independent variables were plant species and crab presence. Two-way ANOVA was also applied to test for the effects of treatment (Fixed factor, 3 levels: *Elodea*, *Myriophyllum*, and no plant) and time (Fixed factor, 5 levels: Day 1, 15, 30, 45, and 60) on crab mortality, body mass, and  $\delta^{15}\text{N}$  (Experiment 3). Univariate tests were used to analyze the main difference between plants for each time or treatment. One-way ANOVA was used to determine whether carapace width and the  $\delta^{13}\text{C}$  signatures of the juvenile crab samples differed between treatments. In order to test whether a relationship could be detected between crab body mass and  $\delta^{15}\text{N}$ , Pearson correlations were performed on data pooled across all sampling days. The level of significance,  $\alpha$ , was set to 0.05 for all analyses. Homogeneity of variance was tested using Levene's tests. Tukey's HSD (Honest Significant Difference) test was used for post hoc analysis. Crab body weights were log10-transformed to meet the assumptions of a two-way ANOVA. All statistical tests were performed using SPSS for Windows, version 18.

## 3. Results

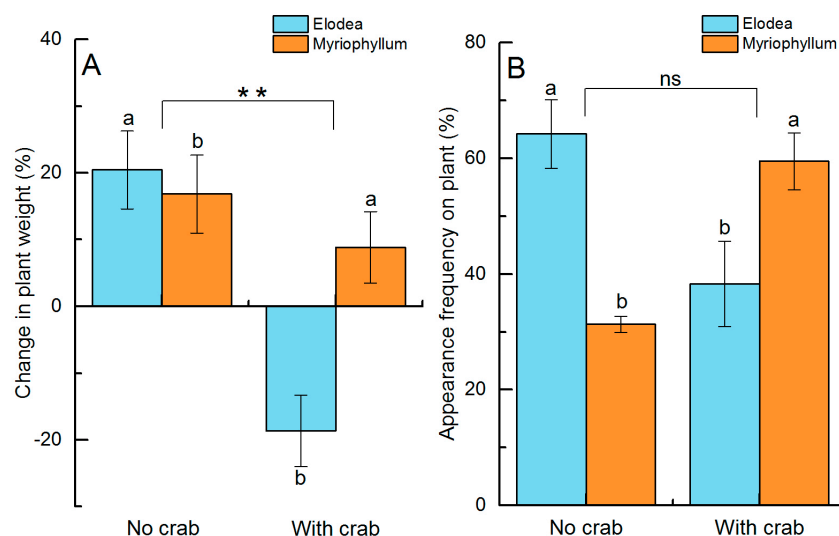
In the absence of food, adult crabs had a more significant herbivore effect on *Elodea* than on *Myriophyllum* ( $F_{(1,8)} = 19.080$ ,  $p = 0.002$ , Table 1). *Elodea* biomass was, on average,  $18.7 \pm 5.4\%$  lower in the presence than in the absence of an adult crab, where the biomass increased by  $20.5 \pm 5.9\%$ . *Myriophyllum* biomass increased by 8.9–16.8% and was independent of crab presence/absence (Figure 3A).

**Table 1.** Summary of two-way ANOVA results in the herbivory selection experiment.

	df	Ms	F	p
Plant	1	428.408	19.080	0.002
Crab	1	1663.808	74.101	<0.001
Plant $\times$ Crab	1	728.521	32.446	<0.001
Error	8	22.453		

There was a significant interaction effect between the occurrence frequency of juveniles among the two plant species and adult crab presence ( $F_{(1,8)} = 75.832$ ,  $p < 0.001$ , Table 2). Simple main effects analysis showed that the plant selection by juveniles differed significantly between the two plants depending on whether the predator was present or not ( $p < 0.001$  in the no crab treatment and  $p = 0.001$  in the plus crab treatment). The juveniles preferred to settle among the *Elodea* in the absence of an adult crab (appearance frequency among the plants:  $64.2 \pm 5.9\%$ ) but selected for *Myriophyllum* in the presence of an adult crab (appearance frequency among the plants:  $59.5 \pm 4.9\%$ , Figure 3B).





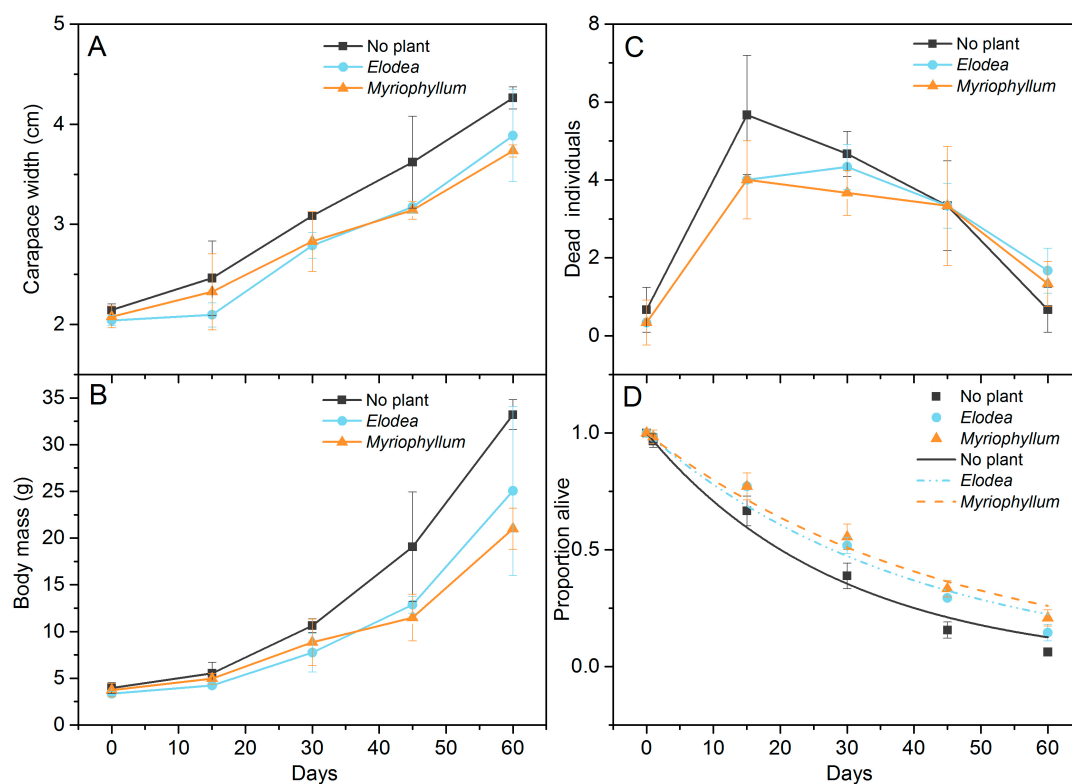
**Figure 3.** Differences in herbivory selection and refuge selection by experimental crabs between *Elodea* and *Myriophyllum*. Error bars represent standard deviation ( $n = 3$ , %). Different letters above the bars denote significant differences between the two plants at  $p < 0.05$ . \*\* indicates significant differences between crab treatments at  $p < 0.01$ , while ns indicates no significance.

**Table 2.** Summary of two-way ANOVA results in the refuge selection experiment.

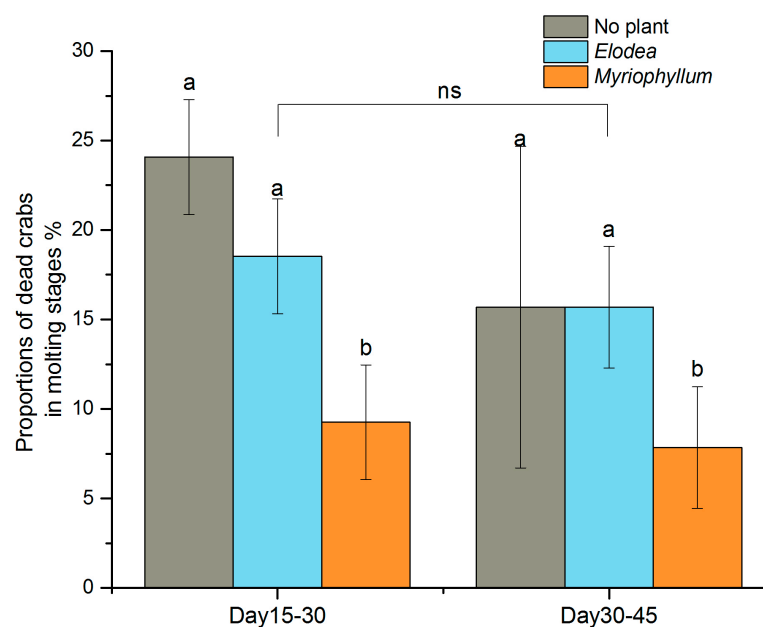
	df	Ms	F	p
Plant	1	102.668	3.538	0.097
Crab	1	3.741	0.129	0.729
Plant $\times$ Crab	1	2200.521	75.823	<0.001
Error	8	29.022		

During the two-month experiment, a linear increase in mean carapace width (Figure 4A) and an exponentially increasing trend in mean body mass (Figure 4B) with time occurred in all treatments. The crabs in the no plant treatment were heavier than those in the *Elodea* and *Myriophyllum* treatments ( $F_{(2,30)} = 10.196$ ,  $p < 0.001$ , Table 3). However, no significant differences in crab body weight were found between the two plant treatments (Tukey  $p = 0.939$ ). The number of dead crabs recorded at 15-day intervals did not differ significantly between the plant treatments (Table 3), and most of the crabs died during the first 30 days (Figure 4C). However the proportion of crabs dying when entering the molting stage differed significantly between the two plants ( $F_{(2,12)} = 9.320$ ,  $p = 0.004$ , Table 3). Post hoc comparison revealed that the mortality rates in the molting stages were significantly lower in the *Myriophyllum* treatment than in the *Elodea* treatment (Tukey  $p = 0.022$ ) and the control (Tukey  $p = 0.004$ ) (Figure 5). The total estimated mortality rate in the treatments without plants was  $0.034 \pm 0.003 \text{ day}^{-1}$  ( $R^2 = 0.98$ ,  $p < 0.001$ ), which was considerably higher than in the *Elodea* ( $0.025 \pm 0.002 \text{ day}^{-1}$ ,  $R^2 = 0.97$ ,  $p < 0.001$ ) and *Myriophyllum* ( $0.022 \pm 0.001 \text{ day}^{-1}$ ,  $R^2 = 0.98$ ,  $p < 0.001$ ) treatments (Figure 4D).

Both the  $\delta^{13}\text{C}$  and  $\delta^{15}\text{N}$  content of the crabs gradually increased during the experimental period (Figure 6A,B).  $\delta^{13}\text{C}$  varied between  $-25.8 \pm 1.0\text{‰}$  and  $-20.4 \pm 2.1\text{‰}$ , while  $\delta^{15}\text{N}$  ranged from  $6.3 \pm 0.3\text{‰}$  to  $9.3 \pm 0.3\text{‰}$ . No significant difference in  $\delta^{13}\text{C}$  was detected among the treatments (one-way ANOVA,  $F = 0.471$ ,  $p = 0.628$ ), while  $\delta^{15}\text{N}$  became significantly more enriched with time and differed markedly among the treatments (Table 3). Post hoc comparisons revealed no significant difference in  $\delta^{15}\text{N}$  between the no plant and the *Elodea* treatments (Tukey,  $p = 0.349$ ), but  $\delta^{15}\text{N}$  in the *Myriophyllum* treatment was significantly more enriched than in the *Elodea* (Tukey,  $p < 0.006$ ) and the no plant (Tukey,  $p < 0.001$ ) treatments. Throughout the entire experimental period, significant positive correlations existed between  $\delta^{13}\text{C}$  and  $\delta^{15}\text{N}$  and body mass in all treatments (Pearson correlations,  $p < 0.01$ , Figure 6C,D).



**Figure 4.** Temporal trends of carapace width (cm) (A) and wet body mass (g) (B) of the experimental crabs and crab mortality (individual) (C) and alive proportion (D) in the cannibalism experiment. Error bars represent standard deviation ( $n = 3$ ). The lines illustrate the preferred exponential loss model ( $p = e^{-mt}$ ) (D).

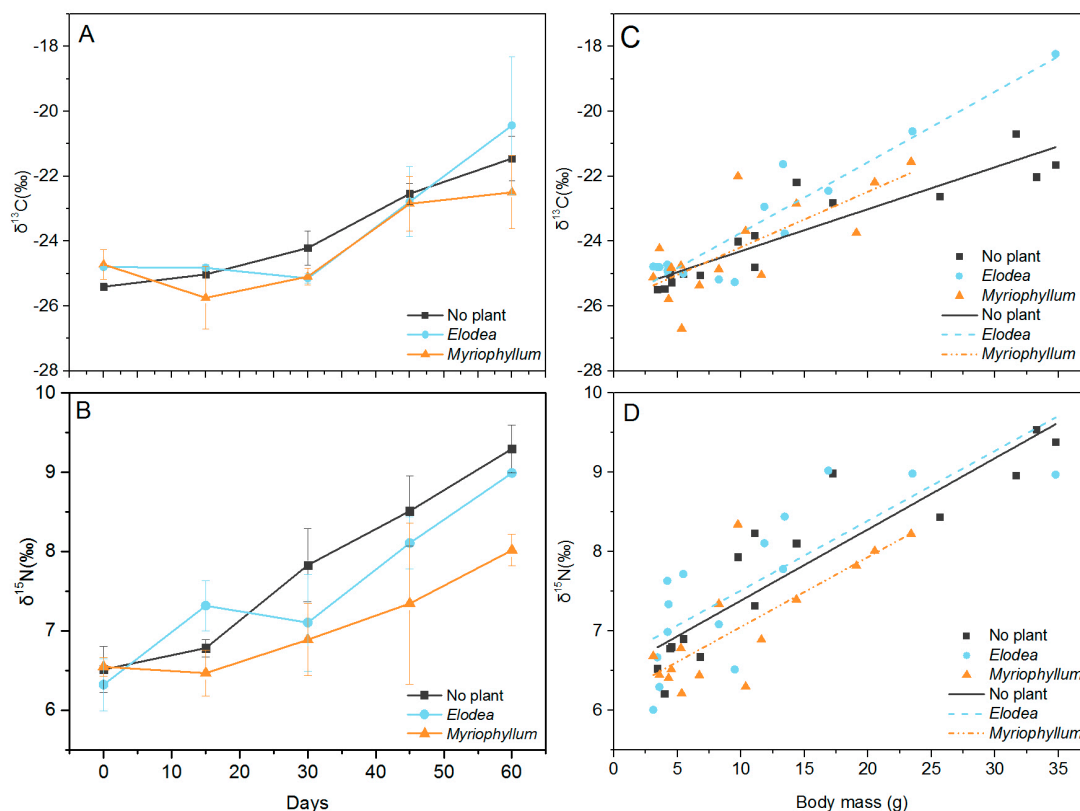


**Figure 5.** Influence of plants on the proportion of dead juvenile crabs in the molting stages during the two experimental periods. Error bars represent standard deviation ( $n = 3$ , %). Different letters above the bars denote significant differences between the treatments for each experimental period at  $p < 0.05$ , while ns indicates no significant differences between the two experimental periods.



**Table 3.** Summary of two-way ANOVA results in the cannibalism experiment.

	df	Ms	F	p
Body mass				
Plant	2	0.073	10.196	<0.001
Time	4	1.047	147.233	<0.001
Plant $\times$ Time	8	0.006	0.891	0.536
Error	30	0.007		
Dead crab individuals per 15 days				
Plant	2	0.822	1.088	0.350
Time	4	30.189	39.956	<0.001
Plant $\times$ Time	8	0.906	1.199	0.333
Error	30	0.756		
Proportions of dead crabs in molting stages				
Plant	2	209.185	9.320	0.004
Time	1	79.836	3.557	0.084
Plant $\times$ Time	2	20.368	0.907	0.430
Error	12	22.445		
$\delta^{15}\text{N}$ (‰)				
Plant	2	2.128	11.902	<0.001
Time	4	7.628	42.662	<0.001
Plant $\times$ Time	8	0.397	2.223	0.054
Error	30	0.179		

**Figure 6.** Temporal trend of  $\delta^{13}\text{C}$  (‰) (A) and  $\delta^{15}\text{N}$  (‰) (B) of crabs and the relationship between body mass,  $\delta^{13}\text{C}$  (‰) (C) and  $\delta^{15}\text{N}$  (‰) (D) of crabs throughout the experimental period in the cannibalism experiment. Error bars represent standard deviation ( $n = 3$ ). Lines represent linear fits for body mass versus  $\delta^{13}\text{C}$  (‰) and body mass versus  $\delta^{15}\text{N}$  (‰). Correlations were significant at  $p = 0.01$ .

#### 4. Discussion

As in earlier studies of the feeding behavior of Chinese mitten crab, we found a preference for *Elodea* [29–31]. In the first experiment, the crabs had reduced the biomass of *Elodea* by 18.7% after 10 days of feeding, while *Myriophyllum* biomass increased irrespective of the absence/presence of adult crabs. The higher concentrations of lignin and polyphenols found in *Myriophyllum* may help to defend it against aquatic herbivores [25,32]. Moreover, *Myriophyllum* tissue is less nutritious, as also indicated by the overall low growth and survival of herbivorous arthropods and gastropods feeding on a *Myriophyllum* diet, recorded in other investigations [33,34]. Accordingly, in our study, starving mitten crabs had no negative effect on *Myriophyllum* growth, and *Myriophyllum* actually exhibited an 8.9–16.8% biomass increase during the experiment. Similarly, Valinoti et al. found a *Myriophyllum* biomass increased of 4–10% regardless of whether the shrimp *Palaemonetes* was present or not, which they attributed to limited grazing [25].

In our study, the presence of an adult crab significantly impacted the habitat choice of juvenile crabs. We found that juveniles preferred *Elodea* (64.2% appearance frequency among the plants) over *Myriophyllum* in the absence of predators, whereas more crabs (59.5% appearance frequency among the plants) remained in *Myriophyllum* habitats in the presence of an adult crab. *Myriophyllum* is much more structurally complex than *Elodea* [35] and this complexity can reduce predation through interference with predator movement, thus allowing the prey an opportunity to escape predation [16]. Even a very sparse vegetation cover may notably mitigate the cannibalistic pressure [10]. Studies of other species of crab have shown that cannibalism is exerted by older and larger crabs on smaller individuals; being smaller made them easier to capture and consume [7,36]. In Experiment 2, the juveniles had a greater affinity for *Myriophyllum* in the presence of adult crabs, likely seeking escape from capture in the complex habitat.

Habitat significantly affected the survival of juveniles in the third, relatively long-term, experiment. Crab mortality rate was highest in the habitat without shelter and decreased in the habitats containing aquatic macrophytes. Similar to the results obtained for other species of crab, we observed that a complex habitat, regardless of type, is effective in augmenting the survival of mitten crab [7,12]. Mortality was also inversely affected by stocking density [9]. In Experiment 3, 20 crabs were placed in each tank with a stocking density of 21 crabs m<sup>-2</sup>. In typical aquaculture, the average stocking density is 1.5 crabs m<sup>-2</sup>. High crab density increases cannibalism when the food is scarce, especially under conditions of shelter shortage [8,12] as crab flesh may be more attractive for energetic or nutritional requirements than plants [36]. We found occasional grazing by juveniles on *Elodea* but still not on *Myriophyllum*. The biomass of the two plants in Experiment 3 did not differ significantly (*Elodea*: 182.3 ± 8.2 g, *Myriophyllum*: 212.3 ± 8.0 g;  $t = -2.690$ ,  $p = 0.115$ ). On the other hand, we found that dead or injured crabs were found more frequently during or immediately after molting. The proportion of crabs dying when entering the molting stages during Day 15–30 and Day 30–45 period varied from 7.8% to 24.1%. In addition, the crab mortality rates in the molting-related stages differed significantly between the *Elodea* and *Myriophyllum* treatments. Molting crabs are highly susceptible to cannibalism because they are soft and less mobile and thus may attract the attention of other active animals nearby [1]. Therefore, hiding among aquatic macrophytes likely improved juvenile survival, and it thus seems that the quantity and quality of shelter are important for reducing cannibalism.

$\delta^{13}\text{C}$  and  $\delta^{15}\text{N}$  are useful tools for estimating the trophic position of consumers in food webs. The stable isotope ratio in the consumer's tissues reflects the corresponding ratio in the diet that is actually assimilated. Increases in  $\delta^{15}\text{N}$  between diet and consumer ( $\Delta\delta^{15}\text{N}$ ), also referred to as trophic fractionation, can be used to indicate the relative trophic positions of sets of individuals. When cannibalism occurs, the cannibalistic individuals will have higher  $\delta^{15}\text{N}$  than the non-cannibalistic ones, reflecting a higher trophic level [37]. In the extreme case where crabs gain all their nutrition by consuming conspecifics, the cannibalistic crabs occupy a trophic level one step higher (i.e., a 3–4‰ higher  $\delta^{15}\text{N}$  value) than that of non-cannibalistic crabs. Therefore,  $\delta^{15}\text{N}$  is potentially a good indicator of cannibalistic behavior [38]. We found that both the  $\delta^{13}\text{C}$  and  $\delta^{15}\text{N}$  in crab muscles increased

constantly over time. The shift in  $\delta^{15}\text{N}$  with time indicated that the crabs had a higher trophic position than that of their conspecifics, most likely reflecting cannibalism. Although the  $\Delta\delta^{13}\text{C}$  of 2.2–4.0‰ and the  $\Delta\delta^{15}\text{N}$  of 1.5–2.8‰ measured here from the beginning to the end of the experiment deviated from commonly cited  $\Delta$ -values in the literature (0 to 1‰ for  $\Delta\delta^{13}\text{C}$  and ~3‰ for  $\Delta\delta^{15}\text{N}$ , according to McCutchan et al. [39]), they are, in fact, consistent with previous reports showing that  $\Delta\delta^{13}\text{C}$  usually ranges from 2 to 4‰ [40,41] and  $\Delta\delta^{15}\text{N}$  from 1.7 to 2.2‰ [38,42,43]. The high protein quality and the high quantity of the diet contributed to the low  $\Delta\delta^{15}\text{N}$  values of the predator [41,44].

Both  $\delta^{13}\text{C}$  and  $\delta^{15}\text{N}$  gradually increased with body weight, indicating that the crabs require a substantial amount of time for complete tissue turnover rate, and hence, to reflect an increase in the assimilation of  $^{13}\text{C}$ - and  $^{15}\text{N}$ -enriched food sources. The shift in the isotopic composition of tissues after a change in diet depends on the turnover rate of the particular tissue [45,46]. In general, turnover rates are higher in smaller organisms with higher metabolic rates than in larger-sized organisms [43, 47]; in accordance with this, during Experiment 3, juveniles were chosen and we observed a crab body mass increase of 5.6–8.3 times after 60 days. The specific growth rates in the No plant, *Elodea*, and *Myriophyllum* treatments were  $3.55 \pm 0.31$ ,  $3.27 \pm 0.53$ , and  $2.89 \pm 0.43\%$  day<sup>−1</sup>, respectively. Most studies have concluded that growth explains most of the carbon and nitrogen turnover [43,46,47]. Cannibalism likely increases growth, and this may explain the positive correlation between size and  $\delta^{15}\text{N}$  also observed by Møller et al. in cannibalistic crabs [38].

For crustaceans, the muscle turnover rate could be influenced by the molting cycle, especially in juvenile individuals [38]. In Experiment 3, most of the juveniles molted once. The proportion of crabs dying when entering the molting stage differed significantly between the two plants. The impact of this on the stable isotope signature variation deserves more attention because molting affects protein synthesis and degradation. However, deVries et al. reported from an experiment that sex and molting did not affect the incorporation rates of mantis shrimp [41]. In addition, the influence of molting on incorporation rates needs further study.

The  $\delta^{15}\text{N}$  of crabs in the *Myriophyllum* treatment became significantly lower with time than that in the *Elodea* treatment, also suggesting that *Myriophyllum* provides a better shelter for juveniles against cannibalistic feeding. We cannot exclude the possibility that the closed experimental conditions led to higher consumption of crab remains due to agonistic encounters when the crabs got larger, which may also have affected the  $\delta^{15}\text{N}$  ratios.

## 5. Conclusions

This study demonstrated how *Myriophyllum* and *Elodea* differentially affected the feeding preference, habitat choice, growth, and survival of Chinese mitten crab. When food was scarce, the mitten crabs preferred *Elodea* as their food source, but in the presence of predators, most of the crabs settled among the *Myriophyllum*, probably using them as a refuge against predation. We found that, overall, the crab mortality rate was lower in the structurally more complex *Myriophyllum* treatment than in the *Elodea* treatment. Stable isotope analyses indicated that cannibalistic feeding might further increase growth, producing ontogenetic increases in trophic position with size. Our study demonstrates that a combination of submerged aquatic vegetation suitable as food combined with other plant species acting as efficient refuges against predators may be the optimal plant stocking method in mitten crab cultures to ensure both high crab survival and high growth.

**Author Contributions:** Q.Z. conceived and designed the experiments; Z.M. performed the experiments; H.C. and Q.Z. analyzed the data; E.J. and X.G. contributed reagents/materials/analysis tools; Q.Z. wrote the paper.

**Funding:** This work was supported by the National “Twelfth Five-Year” Plan for Science and Technology Support (No. 2015BAD13B06), the Science and Technology Service Network Initiative (No. KFJ-SW-STS-145), and the Natural Science Foundation of China (No. 31400399).

**Acknowledgments:** We thank Anne Mette Poulsen for critical editorial assistance. Erik Jeppesen was supported by the projects MARS (Managing Aquatic ecosystems and water Resources under multiple Stress) funded under the 7th EU Framework Programme, Contract No.: 603378 (<http://www.mars-project.eu>) and the Horizon2020 project AQUACOSM (Network of Leading European AQUatic MesoCOSM Facilities Connecting Mountains to Oceans from the Arctic to the Mediterranean).

**Conflicts of Interest:** The authors declare no conflict of interest.

## References

1. Marshall, S.; Warburton, K.; Paterson, B.; Mann, D. Cannibalism in juvenile blue-swimmer crabs *Portunus pelagicus* (Linnaeus, 1766): Effects of body size, moult stage and refuge availability. *Appl. Anim. Behav. Sci.* **2005**, *90*, 65–82. [[CrossRef](#)]
2. Januario, S.M.; Navarrete, S.A. Cannibalism and inter-specific predation in early stages of intertidal crab species that compete for refuges. *J. Exp. Mar. Biol. Ecol.* **2013**, *446*, 36–44. [[CrossRef](#)]
3. Amarasekare, P. Coexistence of intraguild predators and prey in resource-rich environments. *Ecology* **2008**, *89*, 2786–2797. [[CrossRef](#)] [[PubMed](#)]
4. Amaral, V.; Paula, J.; Hawkins, S.; Jenkins, S. Cannibalistic interactions in two cooccurring decapod species: Effects of density, food, alternative prey and habitat. *J. Exp. Mar. Biol. Ecol.* **2009**, *368*, 88–93. [[CrossRef](#)]
5. Duarte, C.; Jaramillo, E.; Contreras, H.; Acuña, K. Cannibalism and food availability in the talitrid amphipod *Orchestoidea tuberculata*. *J. Sea Res.* **2010**, *64*, 417–421. [[CrossRef](#)]
6. Long, W.C.; Popp, J.; Swiney, K.M.; Van Sant, S.B. Cannibalism in red king crab, *Paralithodes camtschaticus* (Tilesius, 1815): Effects of habitat type and predator density on predator functional response. *J. Exp. Mar. Biol. Ecol.* **2012**, *422*, 101–106. [[CrossRef](#)]
7. Long, W.C.; Van Sant, S.B.; Haaga, J.A. Habitat, predation, growth, and coexistence: Could interactions between juvenile red and blue king crabs limit blue king crab productivity? *J. Exp. Mar. Biol. Ecol.* **2015**, *464*, 58–67. [[CrossRef](#)]
8. Takeshita, F.; Tamura, R. Optimal stocking density of juvenile red king crabs *Paralithodes camtschaticus* under cannibalism consideration. *Fish. Sci.* **2014**, *80*, 775–783. [[CrossRef](#)]
9. Waiho, K.; Mustaqim, M.; Fazhan, H.; Norfaizza, W.I.W.; Megat, F.H.; Ikhwanuddin, M. Mating behavior of the orange mud crab, *Scylla olivacea*: The effect of sex ratio and stocking density on mating success. *Aquac. Rep.* **2015**, *2*, 50–57. [[CrossRef](#)]
10. Almeida, M.J.; González-Gordillo, J.I.; Flores, A.A.V.; Queiroga, H. Cannibalism, post-settlement growth rate and size refuge in a recruitment-limited population of the shore crab *Carcinus maenas*. *J. Exp. Mar. Biol. Ecol.* **2011**, *410*, 72–79. [[CrossRef](#)]
11. Sotelano, M.P.; Lovrich, G.A.; Romero, M.C.; Tapella, F. Cannibalism during intermolt period in early stages of the Southern King Crab *Lithodes santolla* (Molina 1872): Effect of stage and predator-prey proportions. *J. Exp. Mar. Biol. Ecol.* **2012**, *411*, 52–58. [[CrossRef](#)]
12. Daly, B.; Swingle, J.S.; Eckert, G.L. Effects of diet, stocking density, and substrate on survival and growth of hatchery-cultured red king crab (*Paralithodes camtschaticus*) juveniles in Alaska, USA. *Aquaculture* **2009**, *293*, 68–73. [[CrossRef](#)]
13. Stoner, A.W.; Ottmar, M.L.; Haines, S.A. Temperature and habitat complexity mediate cannibalism in red king crab: Observations on activity, feeding, and prey defense mechanisms. *J. Shellfish Res.* **2010**, *29*, 1005–1012. [[CrossRef](#)]
14. Long, W.C.; Whitefleet-Smith, L. Cannibalism in red king crab: Habitat, ontogeny, and the predator functional response. *J. Exp. Mar. Biol. Ecol.* **2013**, *449*, 142–148. [[CrossRef](#)]
15. Stevens, B.G. Settlement, substratum preference, and survival of red king crab *Paralithodes camtschaticus* (Tilesius, 1815) glaucothoe on natural substrata in the laboratory. *J. Exp. Mar. Biol. Ecol.* **2003**, *283*, 63–78. [[CrossRef](#)]
16. Bartholomew, A.; Diaz, R.; Cicchetti, G. New dimensionless indices of structural habitat complexity: Predicted and actual effects on a predator's foraging success. *Mar. Ecol. Prog. Ser.* **2000**, *206*, 45–58. [[CrossRef](#)]
17. Hossie, T.J.; Murray, D.L. You can't run but you can hide: Refuge use in frog tadpoles elicits density-dependent predation by dragonfly larvae. *Oecologia* **2010**, *163*, 395–404. [[CrossRef](#)] [[PubMed](#)]

18. Wang, Q.D.; Liu, J.S.; Zhang, S.Y.; Lian, Y.X.; Ding, H.Y.; Du, X.; Li, Z.J.; De Silva, S.S. Sustainable farming practices of the Chinese mitten crab (*Eriocheir sinensis*) around Hongze Lake, lower Yangtze River Basin, China. *Ambio* **2016**, *45*, 361–373. [CrossRef] [PubMed]
19. Food and Agriculture Organization of the United Nations (FAO). Fish Stat J: A Tool for Fishery Statistical Analysis. 2016. Available online: <http://www.fao.org/fishery/statistics/software/fishstatj/en> (accessed on 21 July 2016).
20. Wang, W.; Li, Y.S. *Chinese Mitten Crab Ecological Aquaculture*; China Agriculture Press: Beijing, China, 2010. (In Chinese)
21. Smith, C.; Reay, P. Cannibalism in teleost fish. *Rev. Fish Biol. Fish.* **1991**, *1*, 41–64. [CrossRef]
22. Wang, H.; Wang, H.; Liang, X.; Cui, Y. Stocking models of Chinese mitten crab (*Eriocheir japonica sinensis*) in Yangtze lakes. *Aquaculture* **2006**, *255*, 456–465. [CrossRef]
23. Josefsson, M. NOBANIS—Invasive Species Fact Sheet—*Elodea canadensis*, *Elodea nuttallii* and *Elodea callitrichoides*—From: Online Database of the European Network on Invasive Alien Species—NOBANIS. 2011. Available online: <https://www.nobanis.org/fact-sheets/> (accessed on 29 October 2018).
24. Kong, L.; Cai, C.F.; Ye, Y.T.; Chen, D.X.; Wu, P.; Li, E.C.; Chen, L.Q.; Song, L. Comparison of non-volatile compounds and sensory characteristics of Chinese mitten crabs (*Eriocheir sinensis*) reared in lakes and ponds: Potential environmental factors. *Aquaculture* **2012**, *364*–*365*, 96–102. [CrossRef]
25. Valinoti, C.E.; Ho, C.K.; Armitage, A.R. Native and exotic submerged aquatic vegetation provide different nutritional and refuge values for macroinvertebrates. *J. Exp. Mar. Biol. Ecol.* **2011**, *409*, 42–47. [CrossRef]
26. Dutil, J.D.; Munro, J.; Pe’loquin, M. Laboratory study of the influence of prey size on vulnerability to cannibalism in snow crab (*Chionoecetes opilio* O.; Fabricius, 1780). *J. Exp. Mar. Biol. Ecol.* **1997**, *212*, 81–94. [CrossRef]
27. Tian, Z.; Kang, X.; Mu, S. The molt stages and the hepatopancreas contents of lipids, glycogen and selected inorganic elements during the molt cycle of the Chinese mitten crab *Eriocheir sinensis*. *Fish. Sci.* **2012**, *78*, 67–74. [CrossRef]
28. American Public Health Association (APHA). *Standard Methods for the Examination of Water and Wastewater*, 9th ed.; American Public Health Association: Washington, DC, USA, 1995.
29. Czerniejewski, P.; Rybczyk, A.; Wawrzyniak, W. Diet of the Chinese mitten crab, *Eriocheir sinensis* H. Milne Edwards, 1853, and potential effects of the crab on the aquatic community in the river Odra/Oder Estuary (N.-W. Poland). *Crustaceana* **2010**, *83*, 195–205. [CrossRef]
30. Stark, R. The Impacts of the Chinese Mitten Crab on the San Francisco Bay. 2015. ENVS 190. p. 7. Available online: <http://www.csus.edu/envs/documents/theses/spring%202015/855.2015.spring.pdf> (accessed on 18 May 2015).
31. Veilleux, E.; de Lafontaine, Y. Biological synopsis of the Chinese mitten crab (*Eriocheir sinensis*). *Can. Manuscr. Rep. Fish. Aquat. Sci.* **2007**, *2812*, 45.
32. Smolders, A.J.P.; Vergeer, L.H.T.; van der Velde, G.; Roelofs, J.G. Phenolic contents of submerged, emergent, and floating leaves of aquatic and semi-aquatic macrophyte species: Why do they differ? *Oikos* **2000**, *91*, 307–310. [CrossRef]
33. Choi, C.; Bareiss, C.; Walenciak, O.; Gross, E.M. Impact of polyphenols on growth of the aquatic herbivore *Acentria ephemerella*. *J. Chem. Ecol.* **2002**, *28*, 2223–2235. [CrossRef]
34. Qiu, J.W.; Kwong, K.L. Effects of macrophytes on feeding and life-history traits of the invasive apple snail *Pomacea canaliculata*. *Freshw. Biol.* **2009**, *54*, 1720–1730. [CrossRef]
35. Thomaz, S.M.; da Cunha, E.R. The role of macrophytes in habitat structuring in aquatic ecosystems: Methods of measurement, causes and consequences on animal assemblages’ composition and biodiversity. *Acta Limnol. Bras.* **2010**, *22*, 218–236. [CrossRef]
36. Stevens, B.G.; Swiney, K.M. Post-settlement effects of habitat type and predator size on cannibalism of glaucothoe and juveniles of red king crab *Paralithodes camtschaticus*. *J. Exp. Mar. Biol. Ecol.* **2005**, *321*, 1–11. [CrossRef]
37. Sogabe, A.; Hamaoka, H.; Fukuta, A.; Shibata, J.Y.; Shoji, J.; Omori, K. Application of stable isotope analysis for detecting filial cannibalism. *Behav. Process.* **2017**, *140*, 16–18. [CrossRef] [PubMed]
38. Møller, H.; Lee, S.Y.; Paterson, B.; Mann, D. Cannibalism contributes significantly to the diet of cultured sand crabs, *Portunus pelagicus* (L.): A dual stable isotope study. *J. Exp. Mar. Biol. Ecol.* **2008**, *361*, 75–82. [CrossRef]



39. McCutchan, J.H.; Lewis, W.M.; Kendall, C.; McGrath, C.C. Variation in trophic shift for stable isotope ratios of carbon, nitrogen and sulphur. *Oikos* **2003**, *102*, 378–390. [[CrossRef](#)]
40. Gamboa-Delgado, J.; Peña-Rodríguez, A.; Ricque-Marie, D.; Cruz-Suárez, L.E. Assessment of nutrient allocation and metabolic turnover rate in Pacific white shrimp *Litopenaeus vannamei* co-fed Live macroalgae *Ulva clathrata* and inert feed: Dual stable isotope analysis. *J. Shellfish Res.* **2011**, *30*, 969–978. [[CrossRef](#)]
41. deVries, M.S.; del Rio, C.M.; Tunstall, T.S.; Dawson, T.E. Isotopic incorporation rates and discrimination factors in mantis shrimp crustaceans. *PLoS ONE* **2015**, *10*, e0122334. [[CrossRef](#)] [[PubMed](#)]
42. Perkins, M.J.; McDonald, R.A.; van Veen, F.J.F.; Kelly, S.D.; Rees, G.; Bearhop, S. Application of nitrogen and carbon stable isotopes ( $\delta^{15}\text{N}$  and  $\delta^{13}\text{C}$ ) to quantify food chain length and trophic structure. *PLoS ONE* **2014**, *9*, e93281. [[CrossRef](#)] [[PubMed](#)]
43. Kilham, S.S.; Hunte-Brown, M.; Verburg, P.; Pringle, C.M.; Whiles, M.R.; Lips, K.R.; Zandona, E. Challenges for interpreting stable isotope fractionation of carbon and nitrogen in tropical aquatic ecosystems. *Verh. Int. Verein. Limnol.* **2009**, *30*, 749–753. [[CrossRef](#)]
44. Adams, T.S.; Sterner, R.W. The effect of dietary nitrogen content on trophic level  $^{15}\text{N}$  enrichment. *Limnol. Oceanogr.* **2000**, *45*, 601–607. [[CrossRef](#)]
45. Gamboa-Delgado, J.; Cañavate, J.P.; Zerolo, R.; Le Vay, L. Natural carbon stable isotope ratios as indicators of the relative contribution of live and inert diets to growth in larval Senegalese sole (*Solea senegalensis*). *Aquaculture* **2008**, *280*, 190–197. [[CrossRef](#)]
46. Vay, L.L.; Gamboa-Delgado, J. Naturally-occurring stable isotopes as direct measures of larval feeding efficiency, nutrient incorporation and turnover. *Aquaculture* **2011**, *315*, 95–103. [[CrossRef](#)]
47. McIntyre, P.B.; Flecker, A.S. Rapid turnover of tissue nitrogen of primary consumers in tropical freshwaters. *Oecologia* **2006**, *148*, 12–21. [[CrossRef](#)] [[PubMed](#)]



© 2018 by the authors. Licensee MDPI, Basel, Switzerland. This article is an open access article distributed under the terms and conditions of the Creative Commons Attribution (CC BY) license (<http://creativecommons.org/licenses/by/4.0/>).