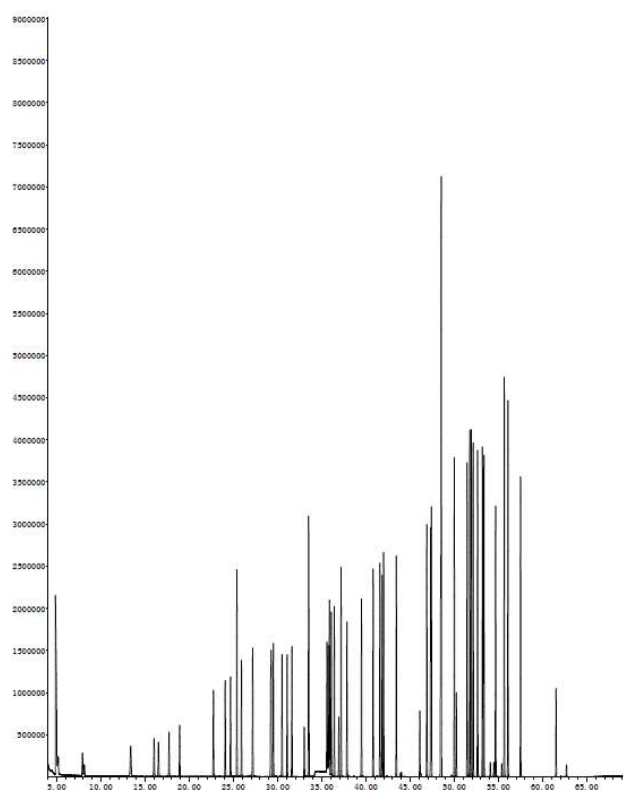


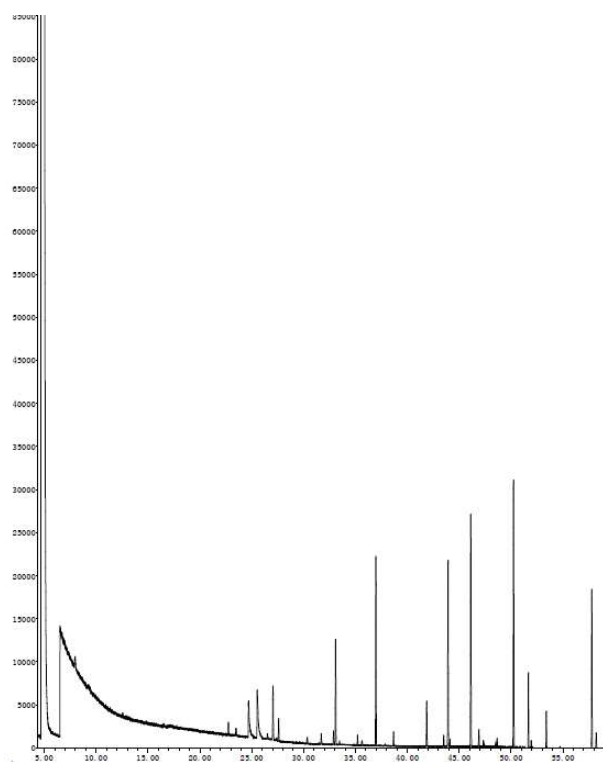
## Supplementary Material

The chromatograph of standard sample measured by TO-15 is illustrated as Figure S1.



**Figure S1.** Chromatograph of standard sample (800 ml sample of 10 ppb).

A chromatograph of a collected sample at XH site on 30<sup>th</sup> July, 14:00 is shown in Figure S2.



**Figure S2.** Chromatograph of a sample (XH site, 30th July, 14:00).