

Supplementary Materials:

Ju Wang ^{1,2,3,*}, Weihao Shi ¹, Kexin Xue ¹, Tong Wu ⁴ and Chunsheng Fang ^{1,2,3}

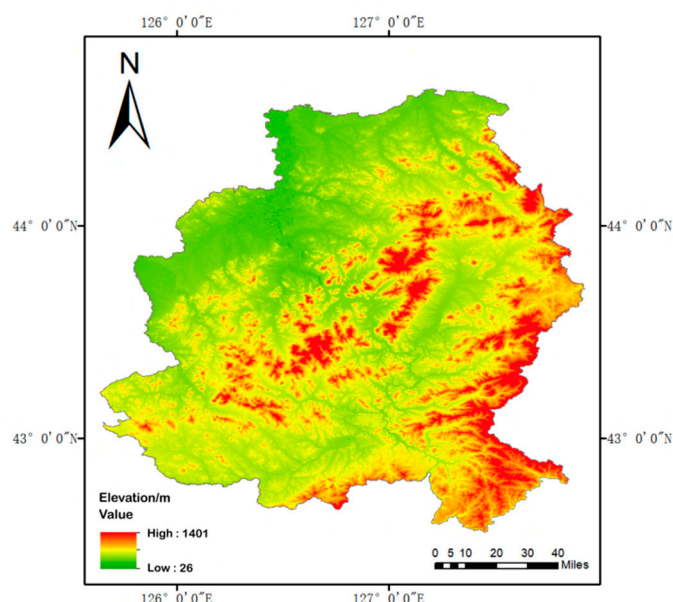


Figure S1. Digital Terrain Map of Jilin City.

Table S1. Specific Location of Monitoring Station and Meteorological Station.

Monitoring station	East longitude	North latitude
HDW	126.5553	43.8875
DJZ	126.5844	43.8358
DLXY	126.4978	43.8228
JB	126.5786	43.8947
JNGY	126.5506	43.8256
FM	126.6772	43.7256
JZ	126.4739	43.9531
Weather station	126.7521	42.9816

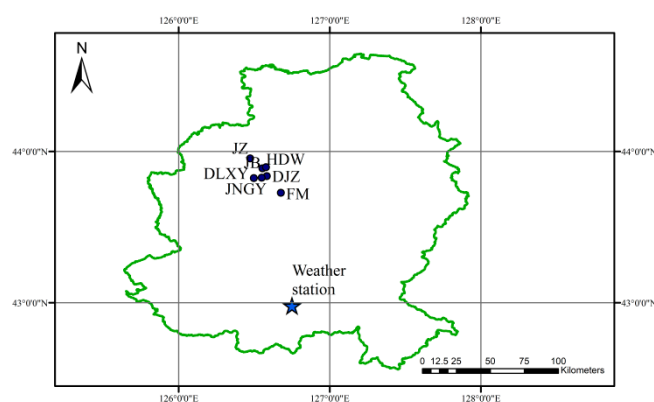


Figure S2. Location of Jilin Automatic Atmospheric Monitoring Station and Meteorological Station.