

Supplementary Material

Differentiating Semi-Volatile and Solid Particle Events Using Low-Cost Lung-Deposited Surface Area and Black Carbon Sensors

Molly J. Haugen, Ajit Singh, Dimitrios Bousiotis, Francis D. Pope and Adam M. Boies

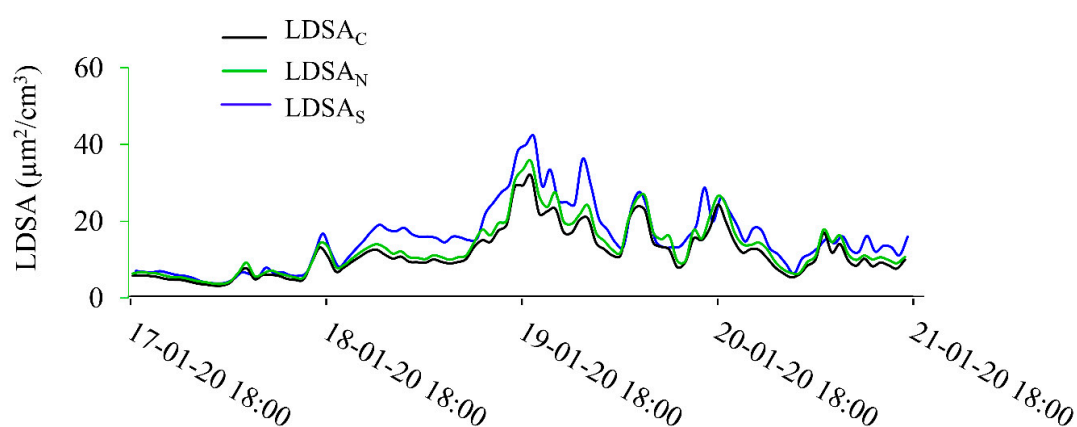


Figure S1. LDSA_S (blue), LDSA_N (green), LDSA_C (black) shown for Period 1 to highlight relative LDSA sampled with laboratory grade instrumentation and low-cost sensors.

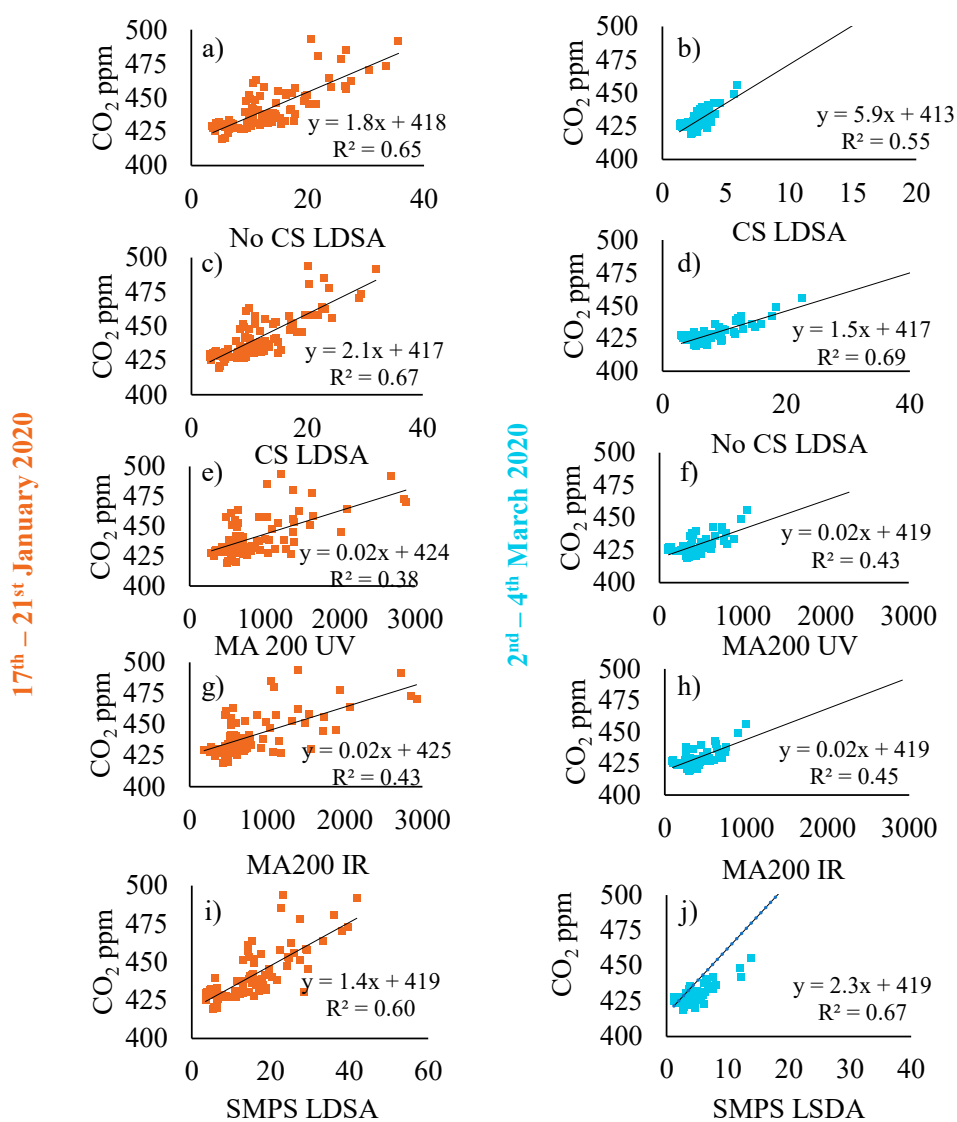


Figure S2. Correlation between instruments and CO₂ for the two sampling periods.

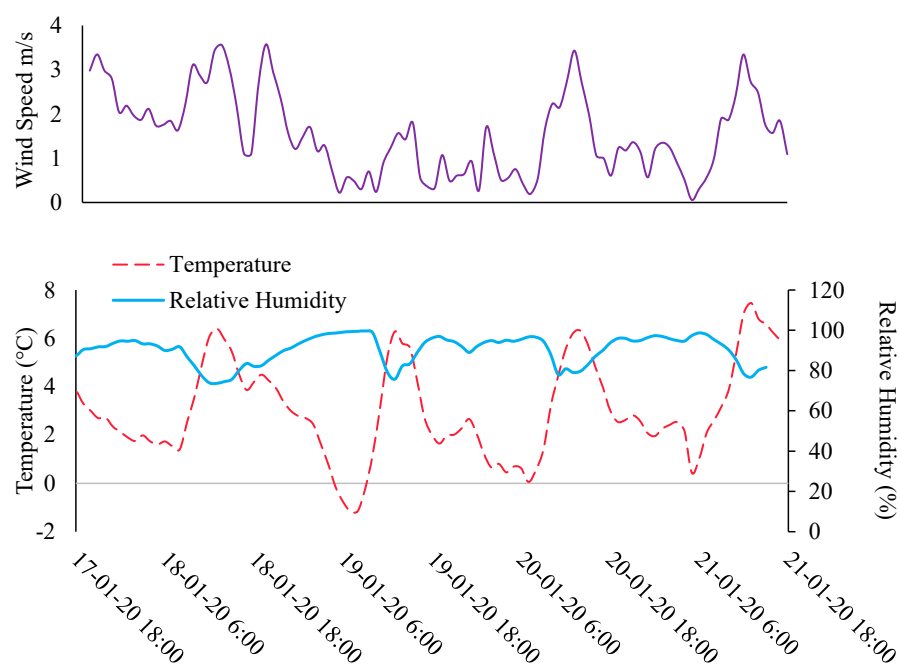


Figure S3. Meteorological Office data for wind speed, temperature, and relative humidity from 17th January 2020 at 18:00 to 21st January 2020 at 18:00.

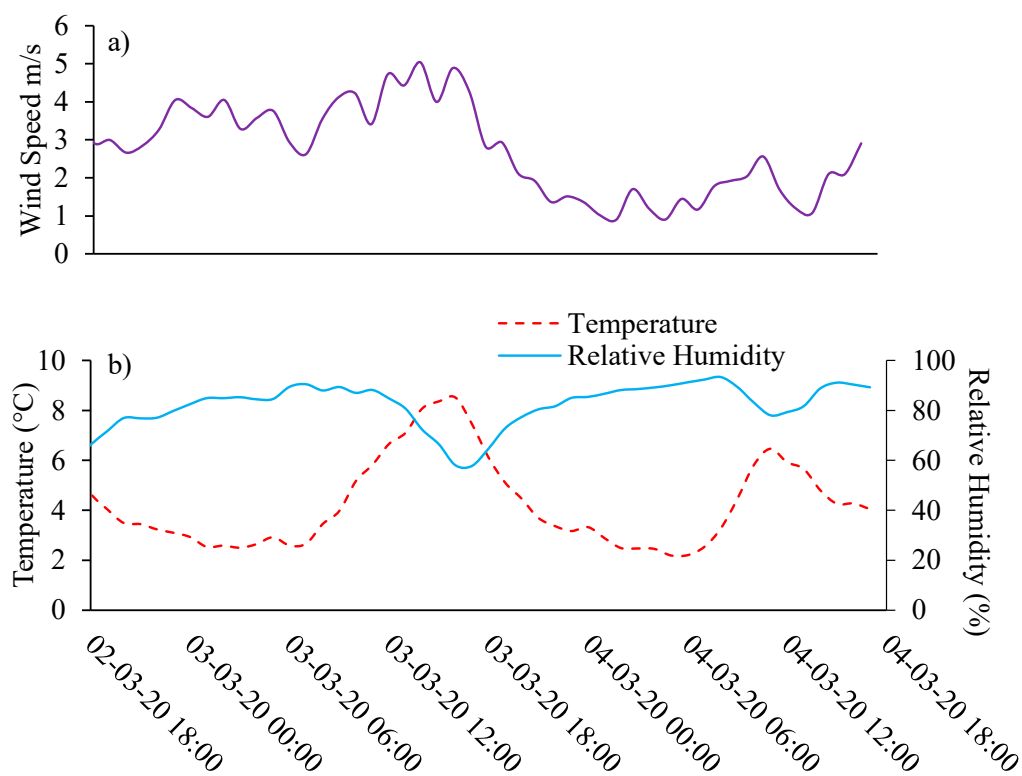


Figure S4. Meteorological Office data for wind speed, temperature, and relative humidity from 2nd March 2020 at 18:00 to 4th March 2020 18:00.

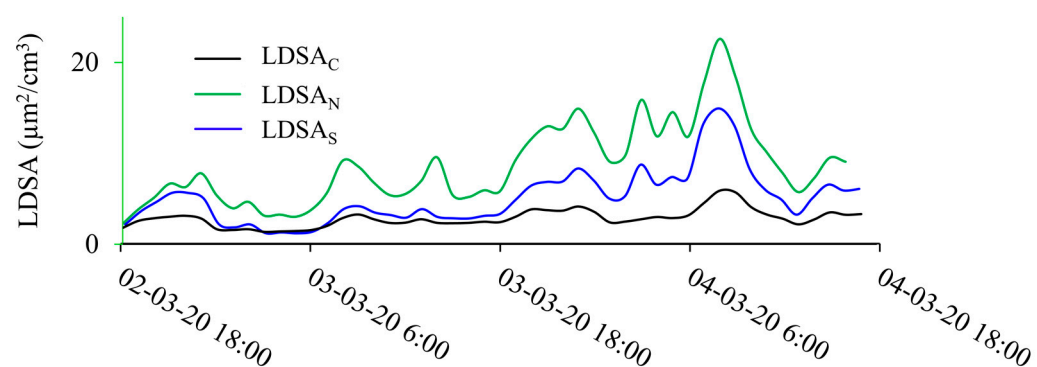


Figure S5. LDSA_S (blue), LDSA_N (green), LDSA_C (black) shown for Period 2 to highlight relative LDSA sampled with laboratory grade instrumentation and low-cost sensors.