

Supplementary Materials: Multiple Regression Analysis of Low Visibility Focusing on Severe Haze-Fog Pollution in Various Regions of China

Zhaodong Liu ^{1,2}, Hong Wang ^{1,2,*}, Yue Peng ^{1,2}, Wenjie Zhang ² and Mengchu Zhao ³

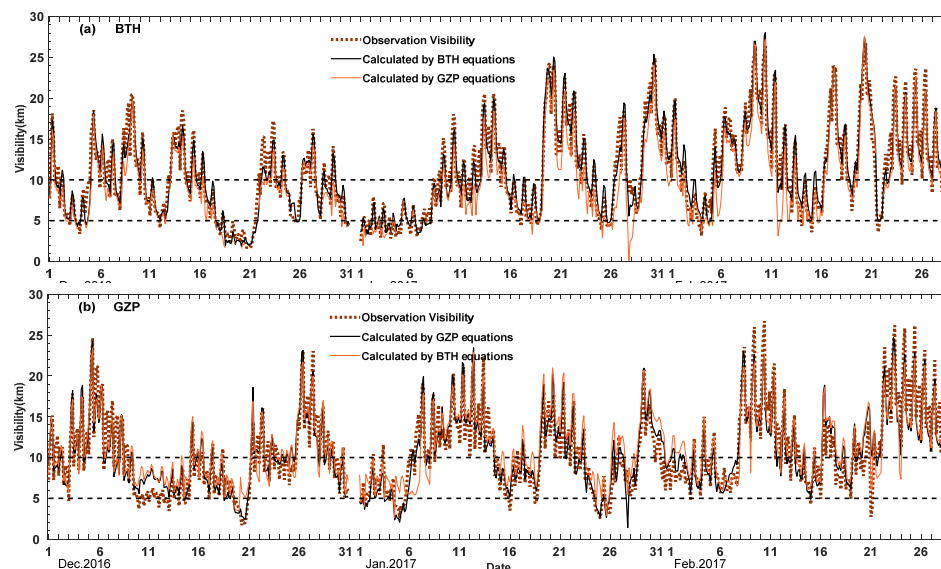


Figure S1. Time series of 3-hourly observations (dashed lines, km) and calculated visibility (solid lines, km) of (a) BTH, and (b) GZP calculated by different fitting equations.

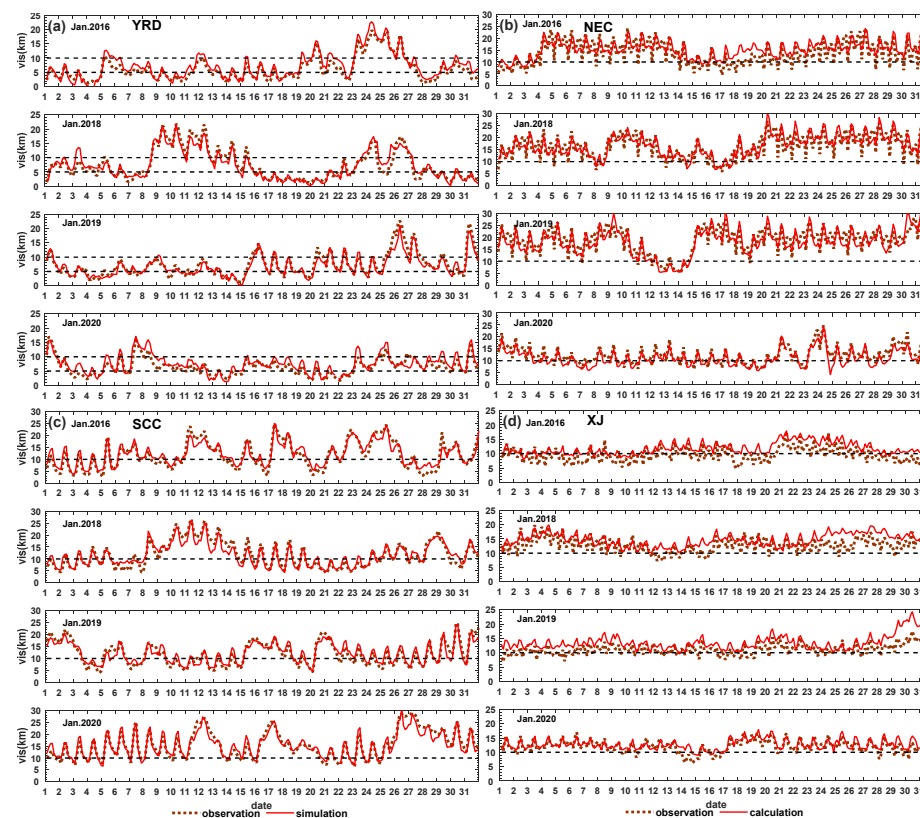


Figure S2. Time series of 3-hourly observed and calculated visibility (km) in (a) YRD, (b) NEC, (c) SCC and (d) XJ in January, 2016–2020 (except 2017).

Table S1. Evaluation for calculated visibility under observed visibility <5 km.

Region	Year	Mean OBS(km)	Mean CAL(km)	MAE (km)	MB (km)	NMB	RMSE (km)
YRD	2016	2.82	3.10	0.84	0.28	0.10	1.03
	2018	3.15	2.84	0.77	-0.31	-0.10	0.95
	2019	3.92	3.65	0.72	-0.27	-0.07	0.88
	2020	3.32	3.45	0.81	0.13	0.04	0.97
NEC	2016				\		
	2018						
	2019	5.17	3.97	0.77	0.77	0.21	0.94
	2020	4.91	4.77	0.64	0.14	-0.03	0.83
SCC	2016	3.63	4.41	0.62	-0.15	0.04	0.77
	2018	3.85	3.74	0.52	-0.11	-0.03	0.63
	2019				\		
	2020						