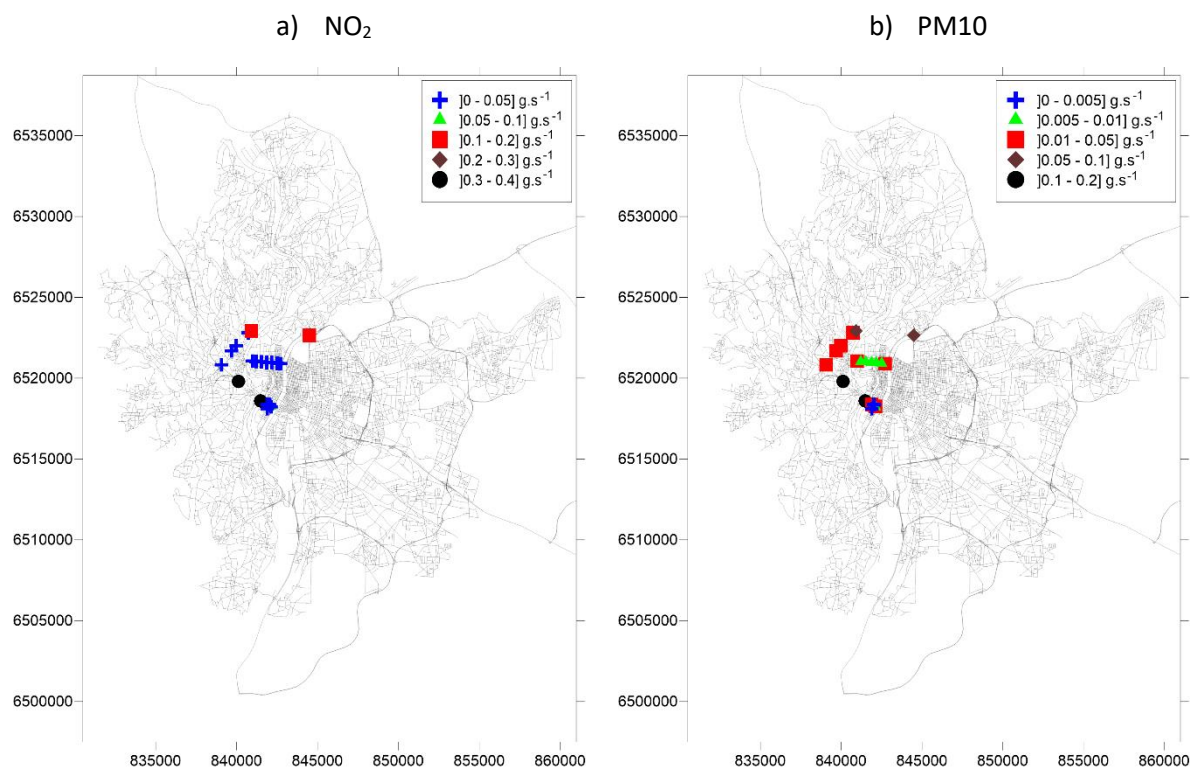
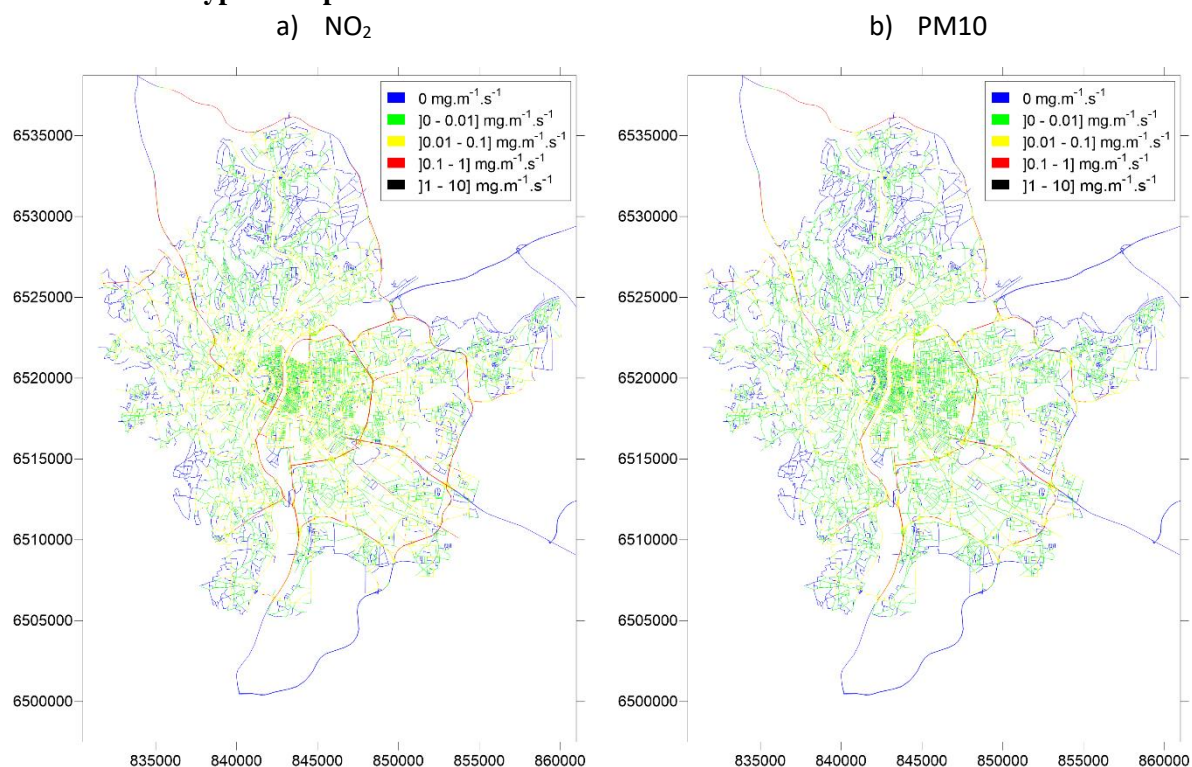


Supplémentary matreials

SM1: Different types of input emission data



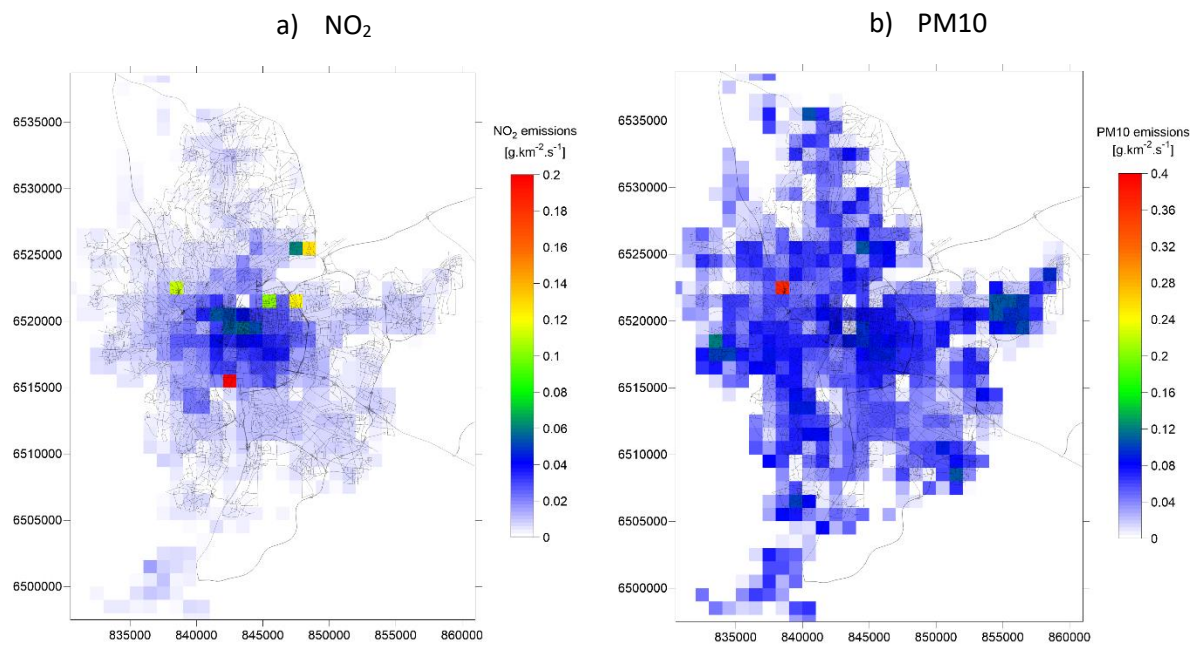
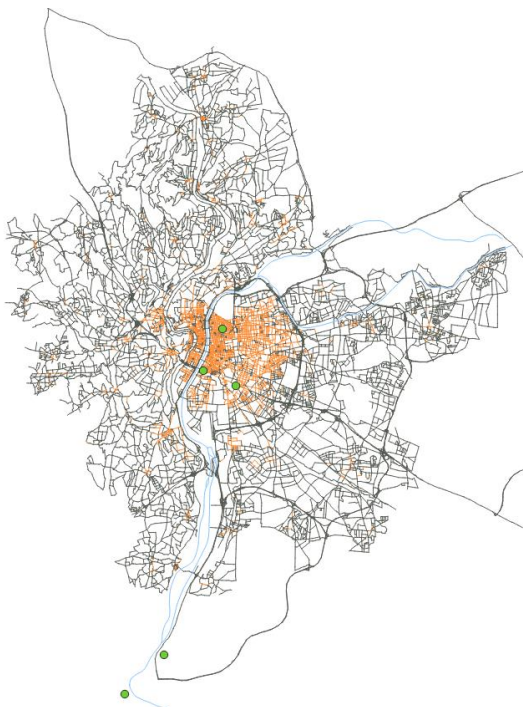


Figure 3. Spatial distribution of the surface distributed sources for NO₂ (a) and PM10 (b) in 2010

SM2: Distribution of measuring stations

a) 1990

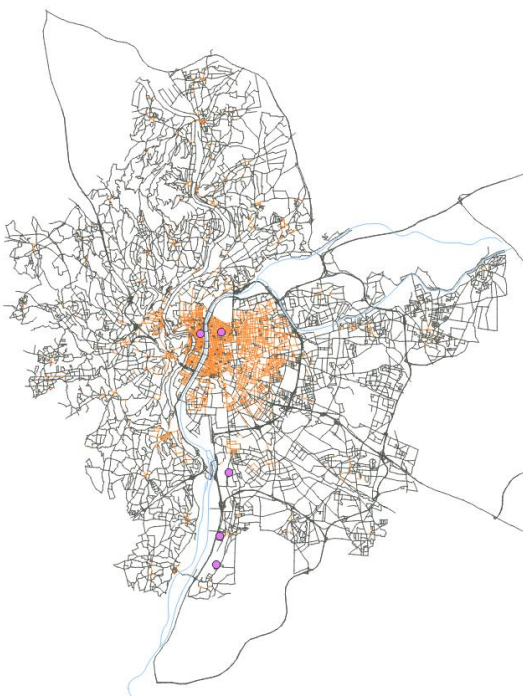


b) 2010



Figure 11. Spatial distribution of NO₂ monitoring stations in 1990 and 2010

a) 1990



b) 2010

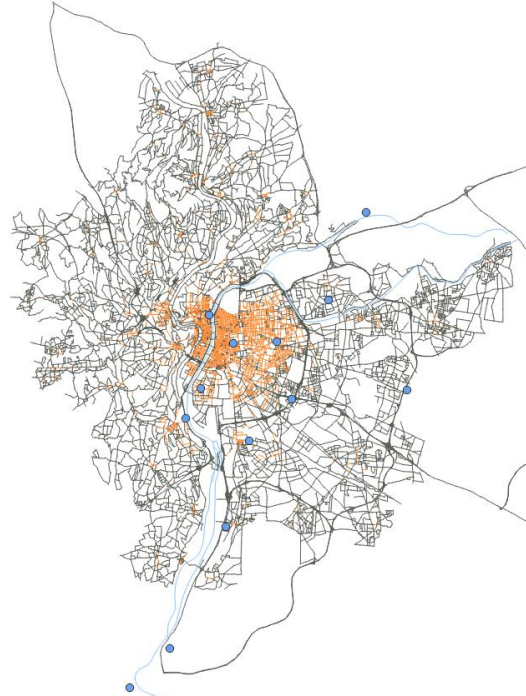


Figure 12. Spatial distribution of PM₁₀ monitoring stations in 1990 and 2010