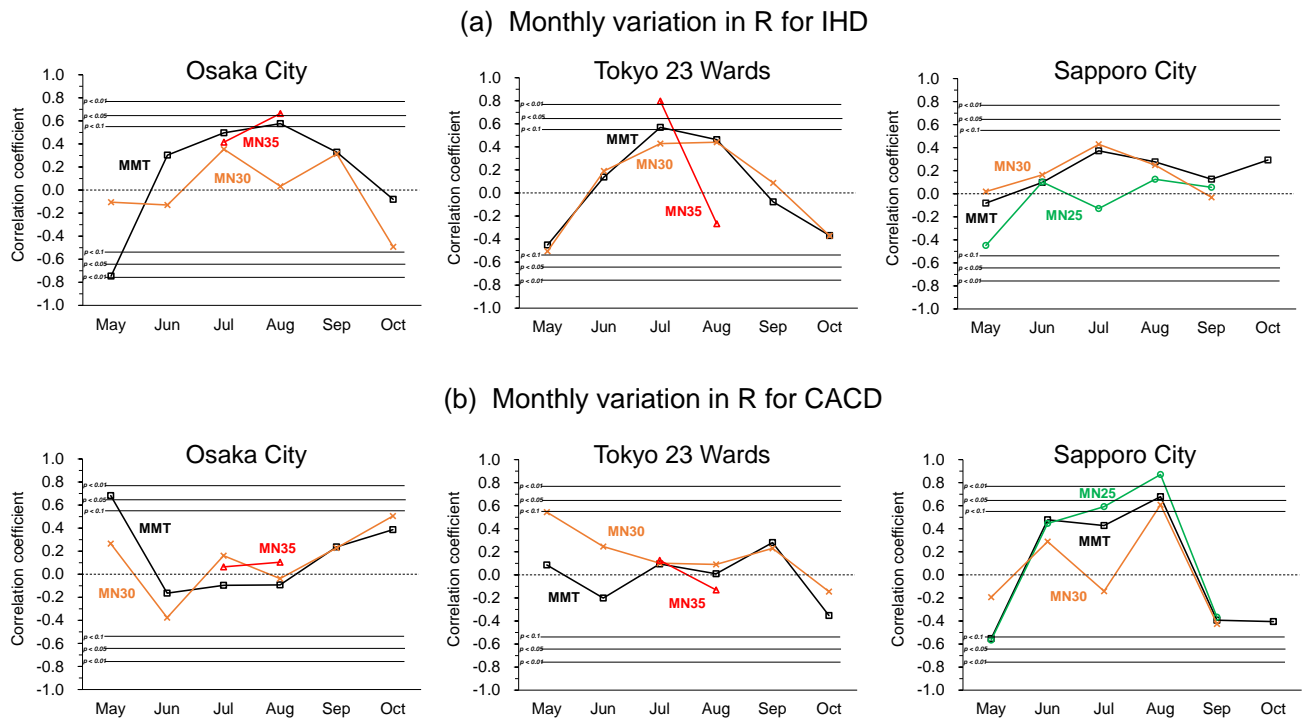


Figure S1. Monthly mean temperatures averaged from 2010 to 2019 (black line), the highest value for ten years (red line), and the lowest value for ten years (blue line) in (a) Sapporo City, (b) Tokyo (23 wards), and (c) Osaka City. Bars in the graphs indicate the temperature difference between the highest and the lowest years (i.e., red minus blue).



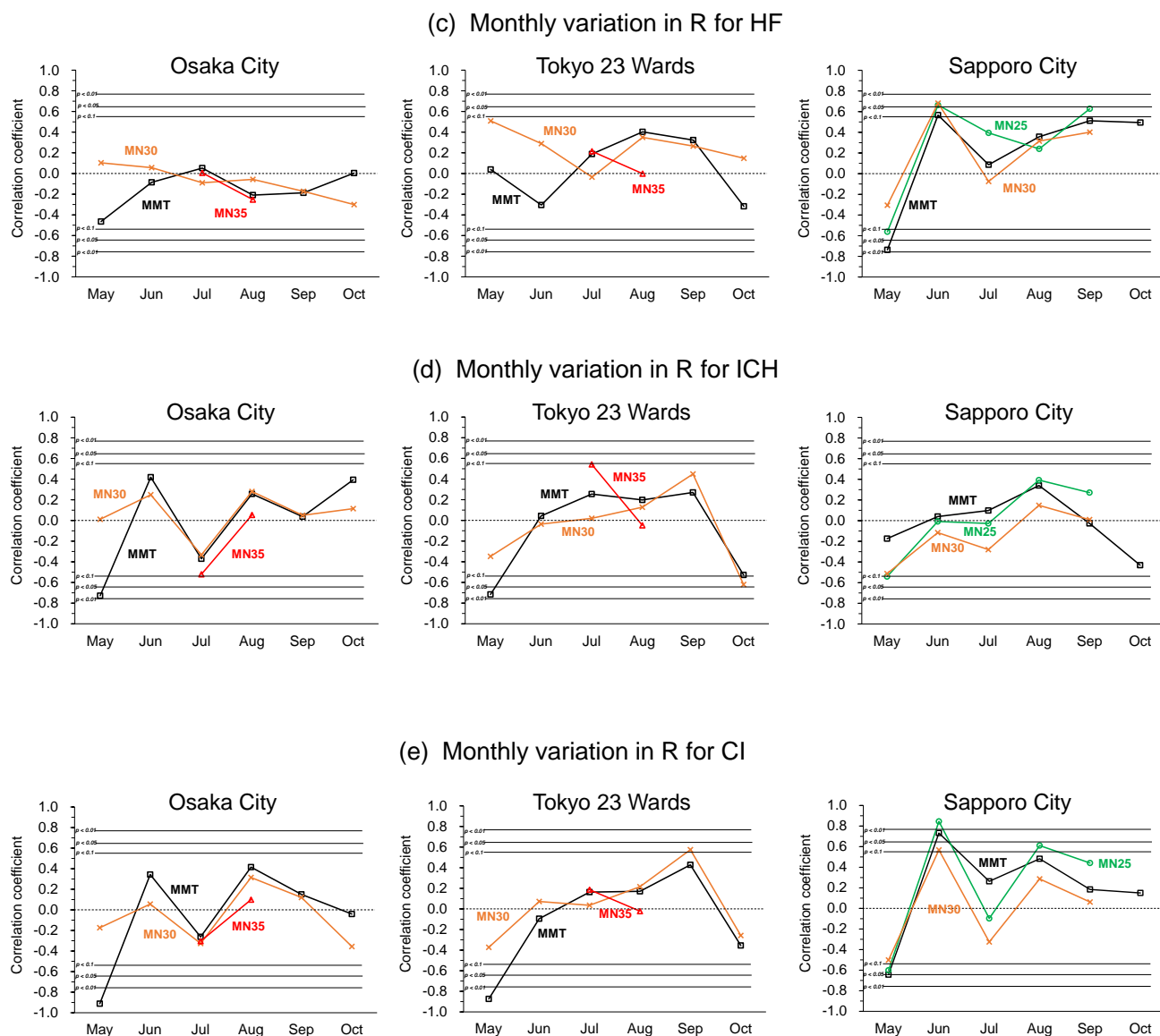


Figure S2. Monthly variations in Pearson's correlation coefficients (R) between the MR_{adj} and MMT, the number of daily maximum temperatures over 25 °C (MN25), 30 °C (MN30), and 35 °C (MN35). The results are indicated for (a) IHD, (b) CACD, (c) HF, (d) ICH, and (e) CI, in Osaka City, Tokyo (23 wards), and Sapporo City. P-values for R are depicted for $p < 0.1$, 0.05, and 0.01.