

Supplementary Materials:

Accurate, Low Cost PM_{2.5} Measurements Demonstrate the Large Spatial Variation in Wood Smoke Pollution in Regional Australia and Improve Modeling and Estimates of Health Costs

Dorothy L Robinson

Adjunct Senior Research Fellow, University of New England, Armidale, NSW 2351, Australia;
drd.robinson@gmail.com

Received: 14 July 2020; Accepted: 8 August; Published: date



Figure S1. Two Purple Air Monitors installed on the roof of the NSW Government Station.

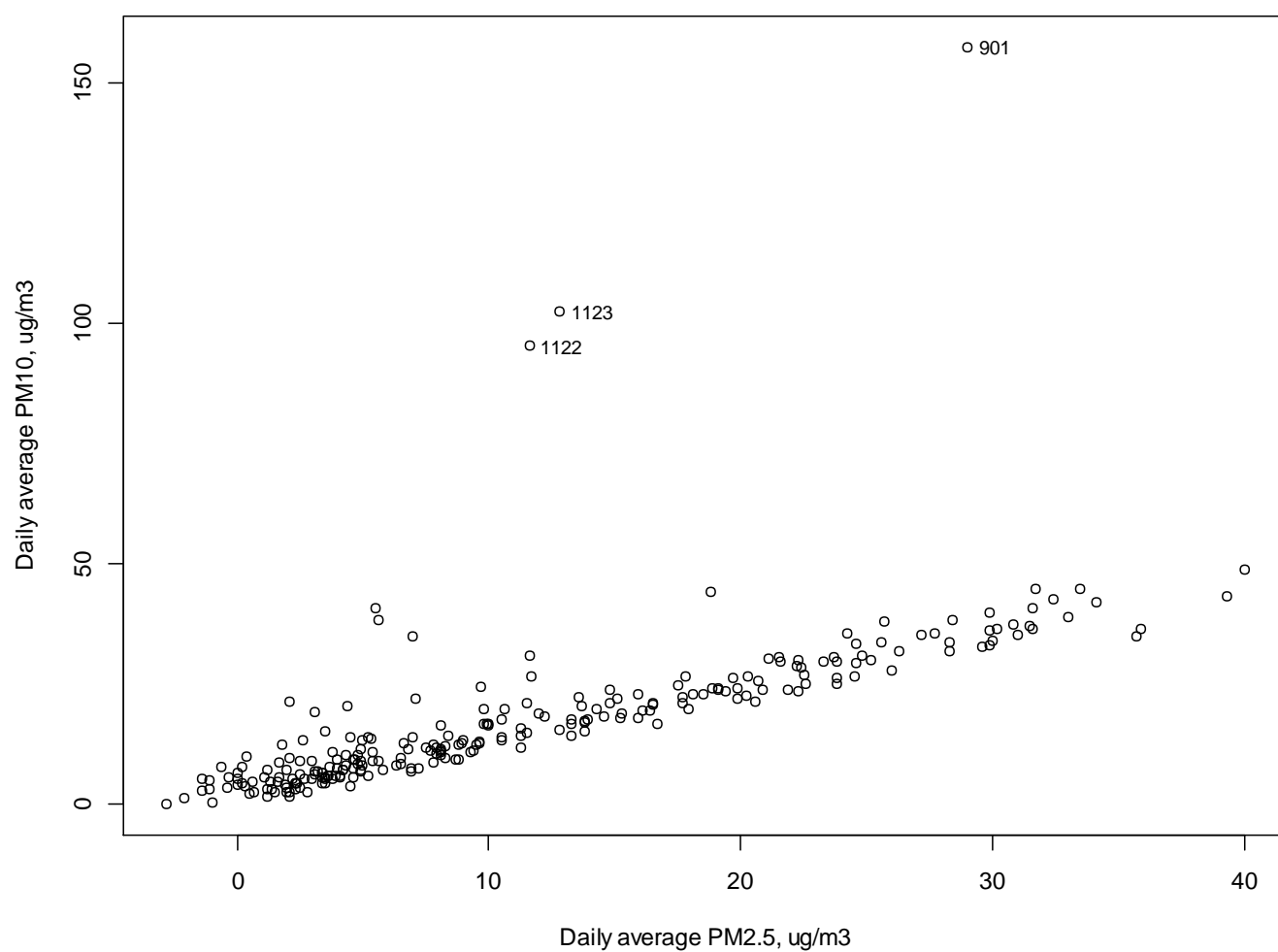


Figure S2. Comparison of daily average PM₁₀ and PM_{2.5} at the Armidale NSW Government Station, including dates (month and day in 2018) when major dust storms were reported. .

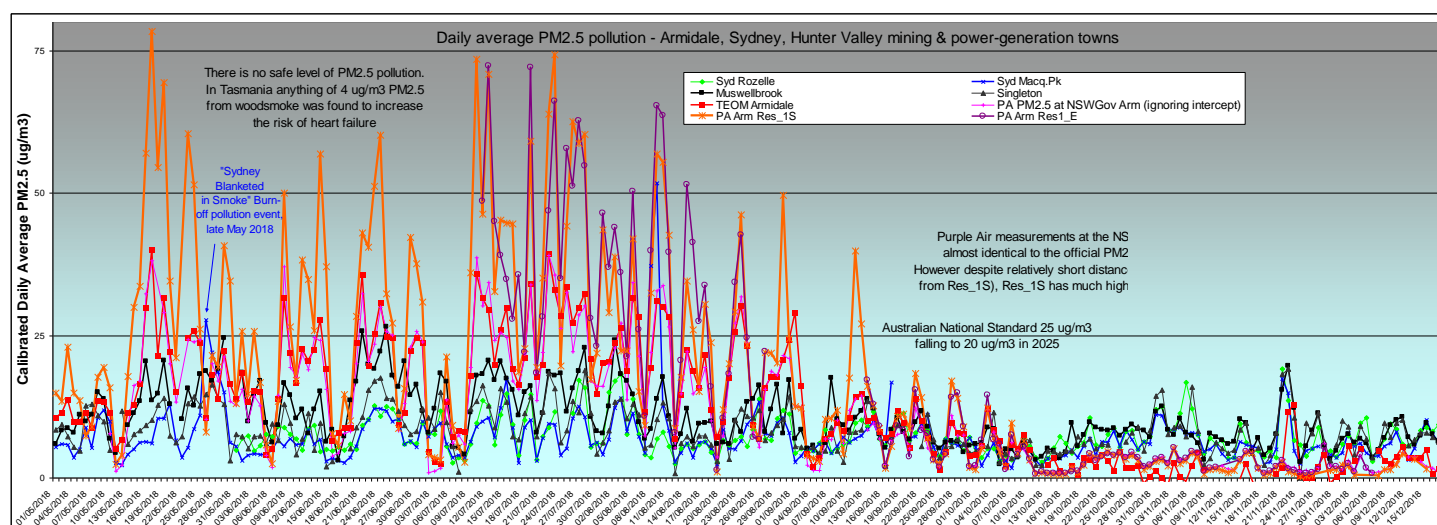


Figure S3. Daily Average PM_{2.5} measurements at NSW Government air pollution stations in Sydney (Rozelle, Macquarie Park), Muswellbrook, Singleton (two Hunter Valley mining and power-generation towns) and Armidale, together with Purple Air PM_{2.5} measurements at the NSW Government station and two residential areas in Armidale.