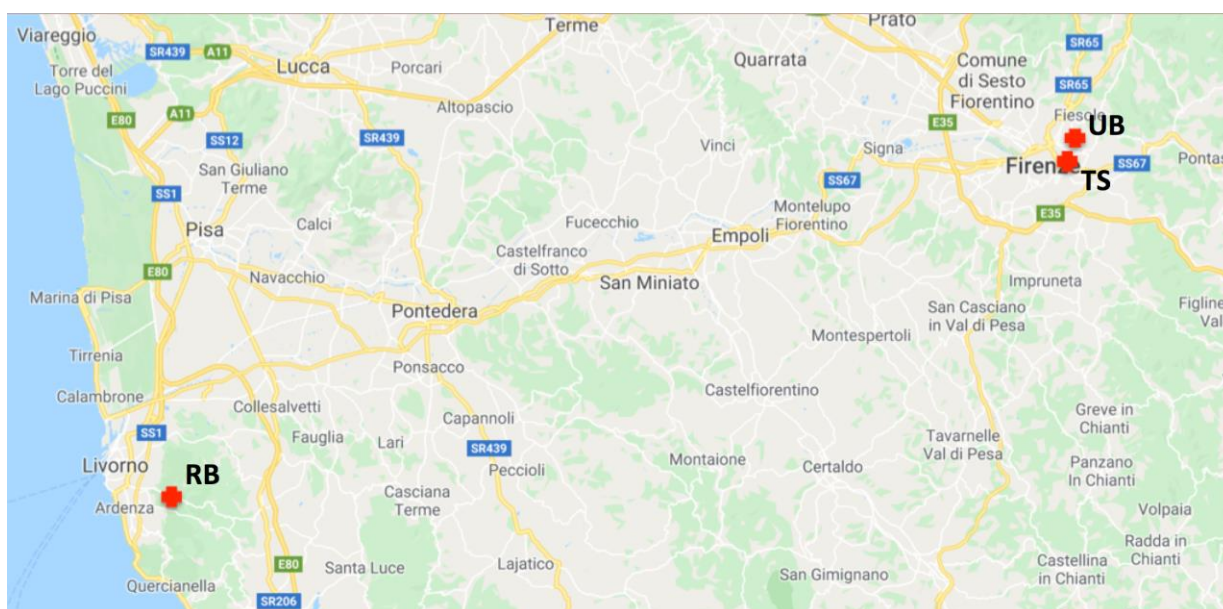


Aerosol samples were collected in three air quality monitoring stations of the Environmental Protection Agency of Tuscany:

- Viale Gramsci station (Florence), located in the eastern part of the urban area along the main ring road of the city, designated as traffic site (TS);
- Via Bassi station (Florence), located in a residential area in the northeast of Florence, designated as an urban background site (UB);
- Mauro Gordato station near Livorno. Although partially influenced by the nearby coastal activity, it may be considered as a regional background station for what concerns the other anthropogenic sources. Here it is designated as a rural background site (RB).





TS

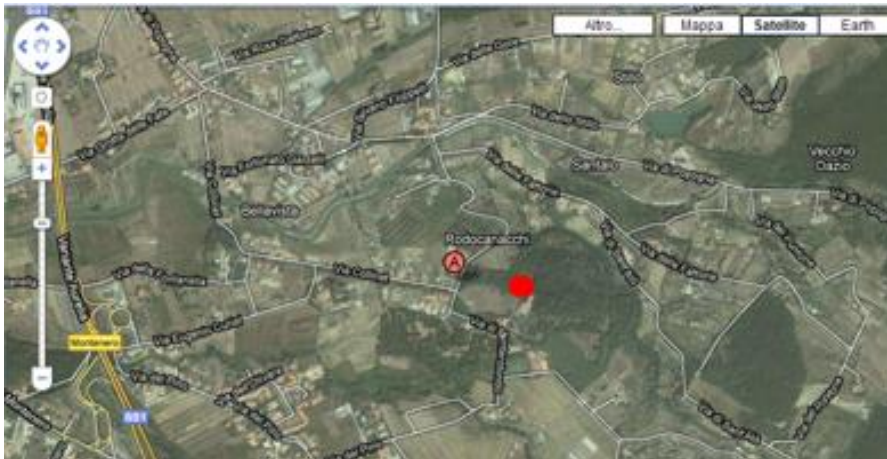


UB





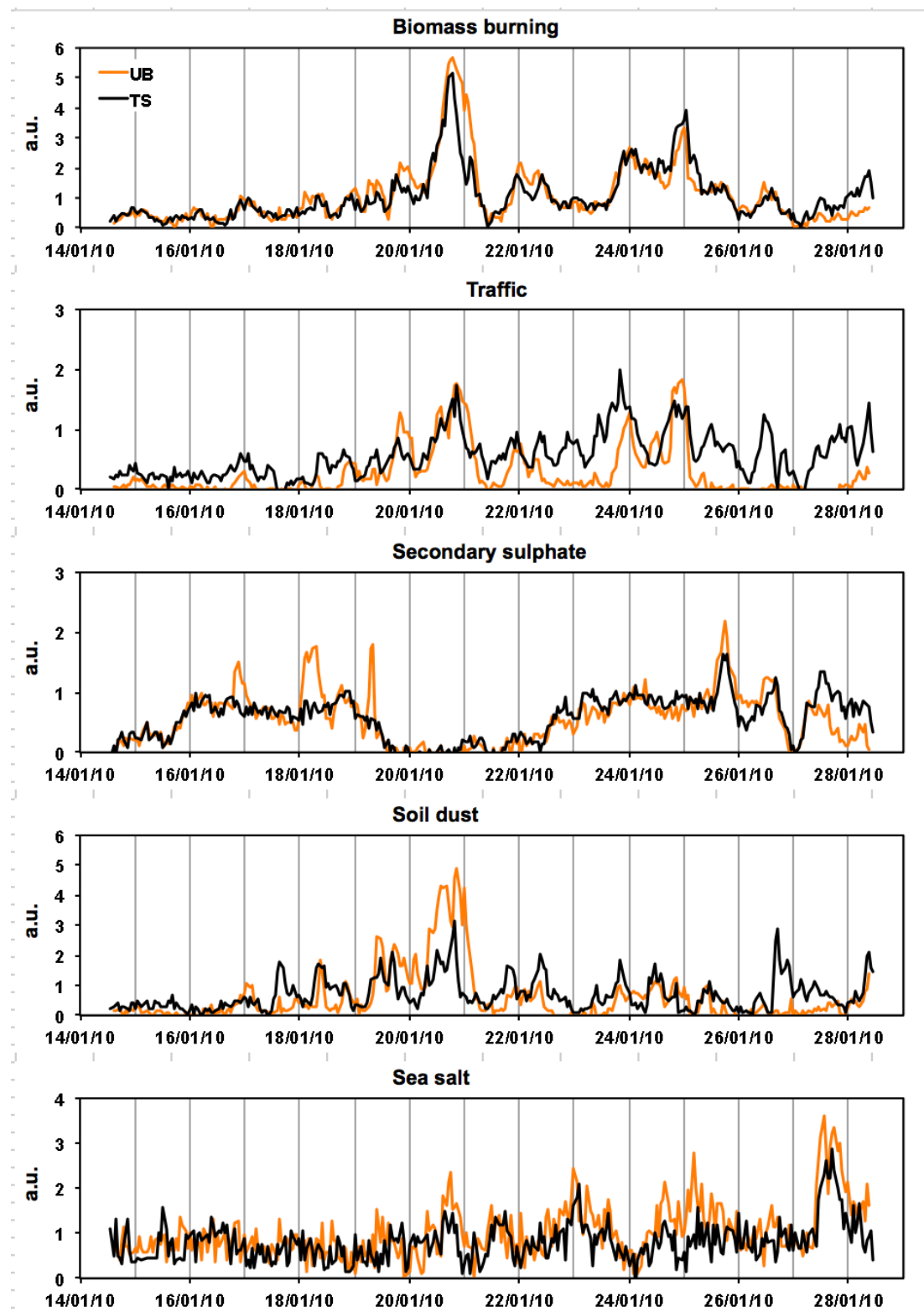
**RB**



PMF analysis of RB daily samples: source profiles



PMF analysis of hourly samples: source time series (winter intensive campaign, arbitrary units)



PMF analysis of hourly samples: average source contributions to elemental concentrations

