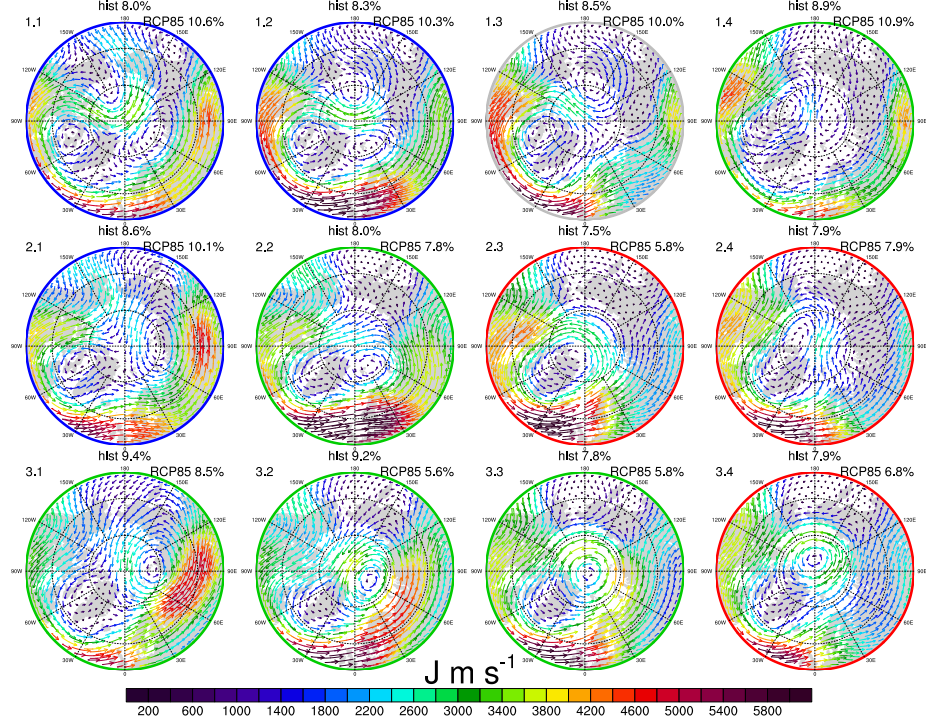
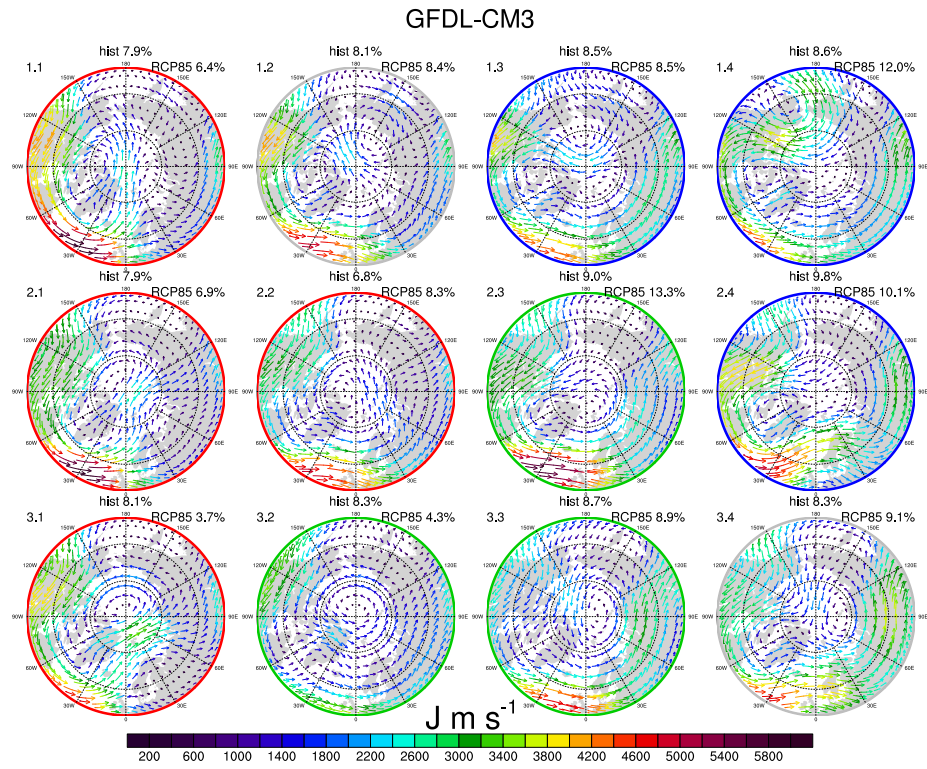


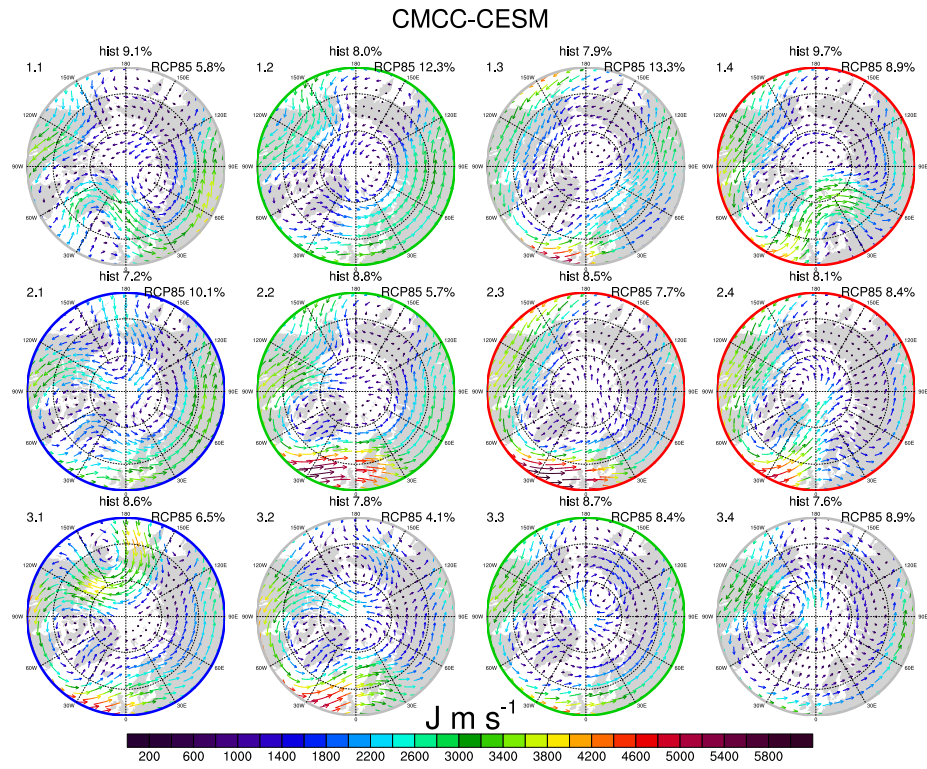
MRI-CGCM3



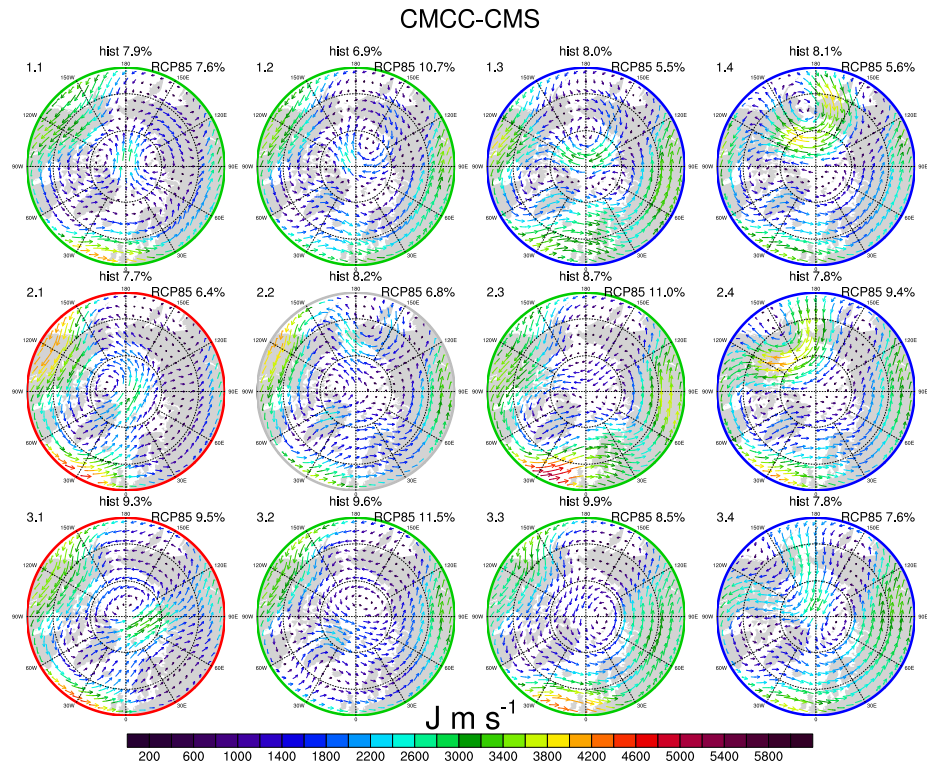
S 1: SOM with 4 columns and 3 rows of the 500 hPa horizontal temperature flux, derived from winter data of the historical run of the MRI-CGCM3 model. Numbers in the top left corner denote the name of the pattern, numbers shown next to the experiment names denote the relative occurrence frequencies for each pattern. Colored frames denote grouping to the pathways: red means Atlantic pathway, green means Continental pathway, blue means Pacific pathway and grey means miscellaneous pathway.



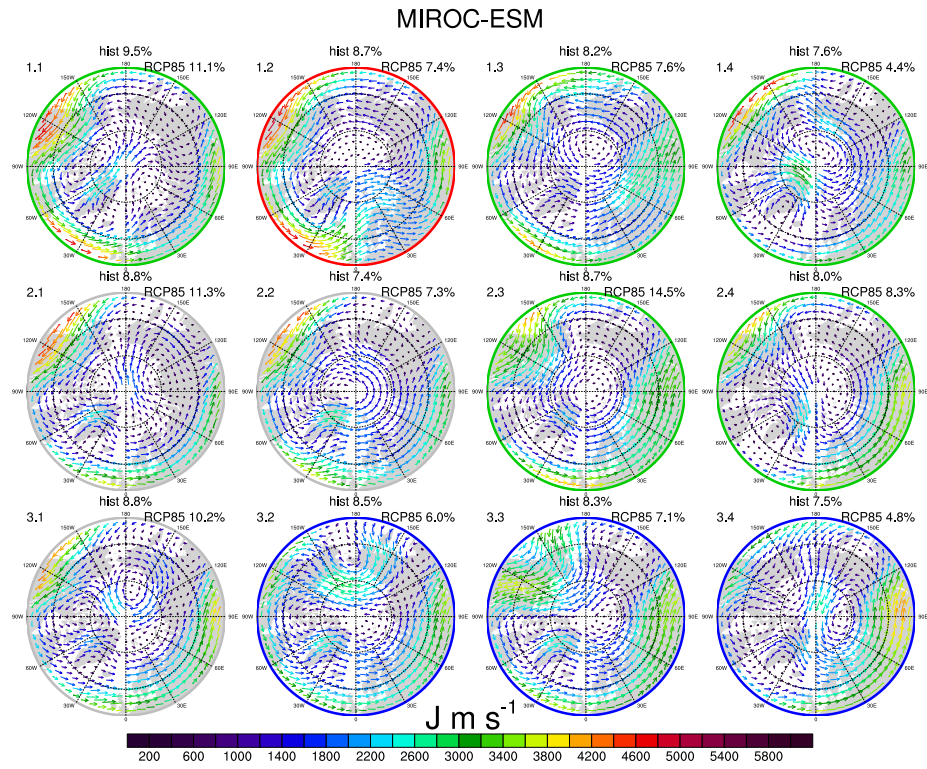
S 2: As Figure 1 but for GFDL-CM3.



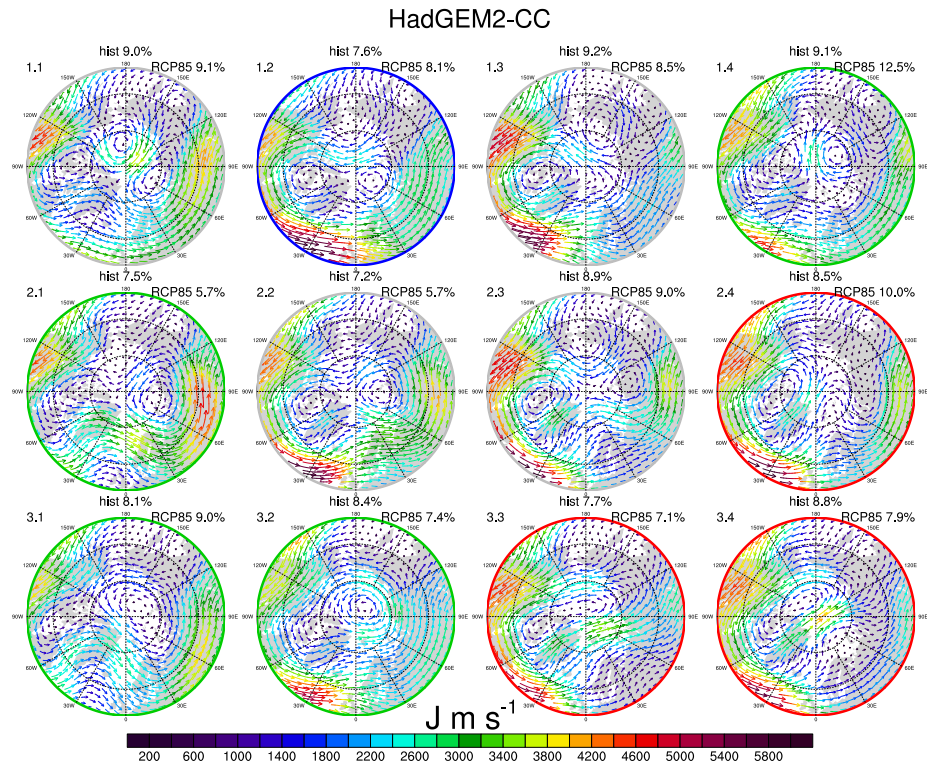
S 3: As Figure 1 but for CMCC-CESM.



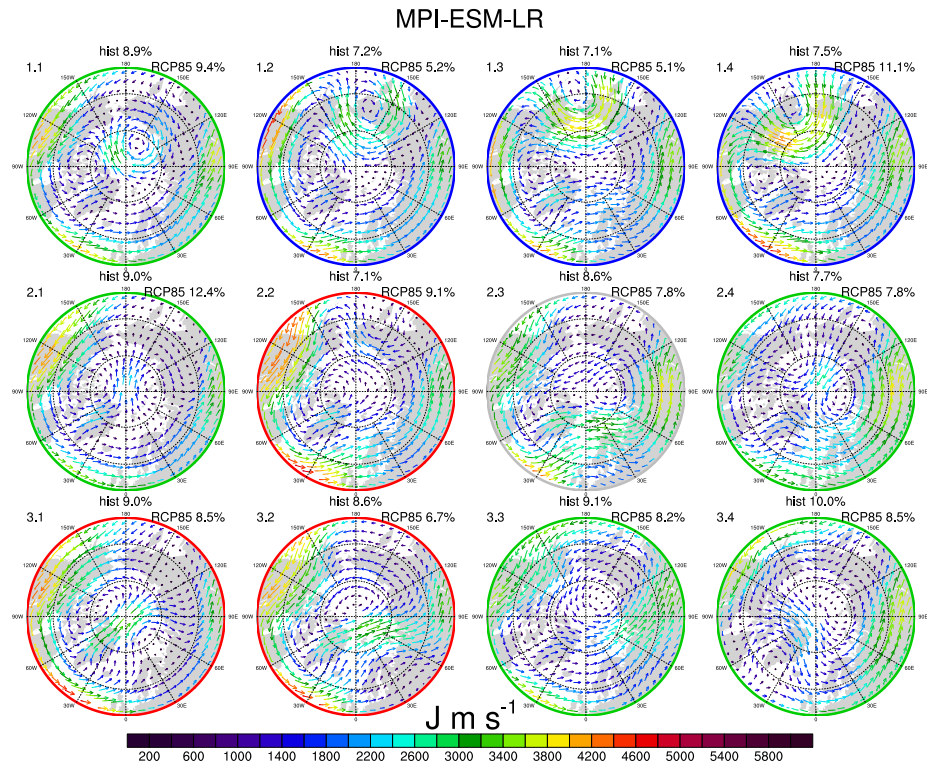
S 4: As Figure 1 but for CMC-CMS.



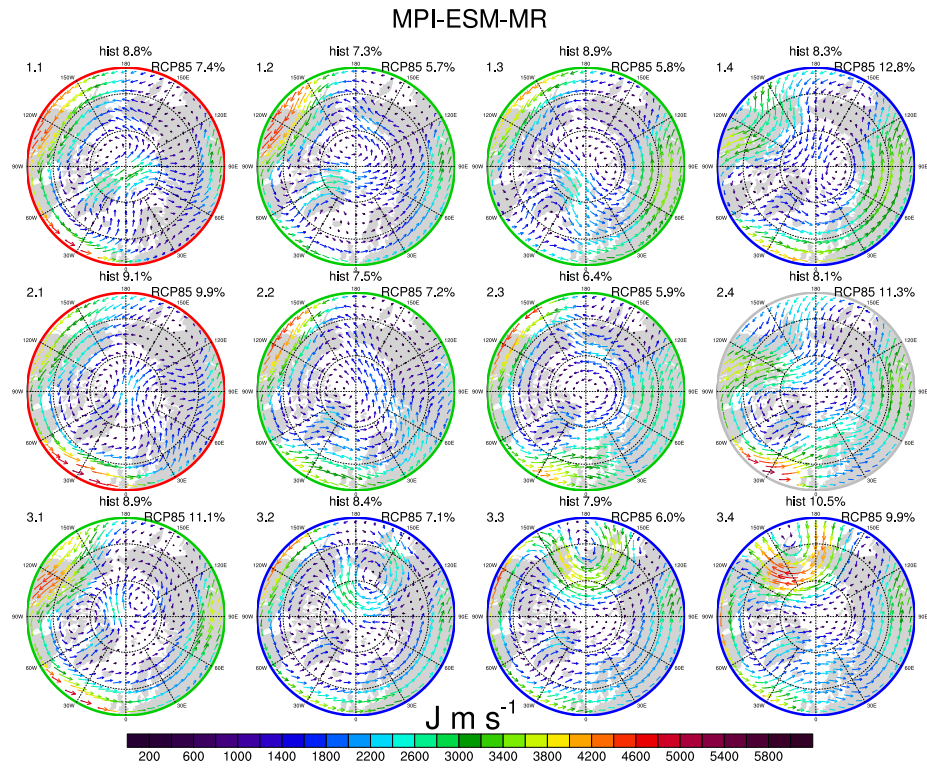
S 5: As Figure 1 but for MIROC-ESM.



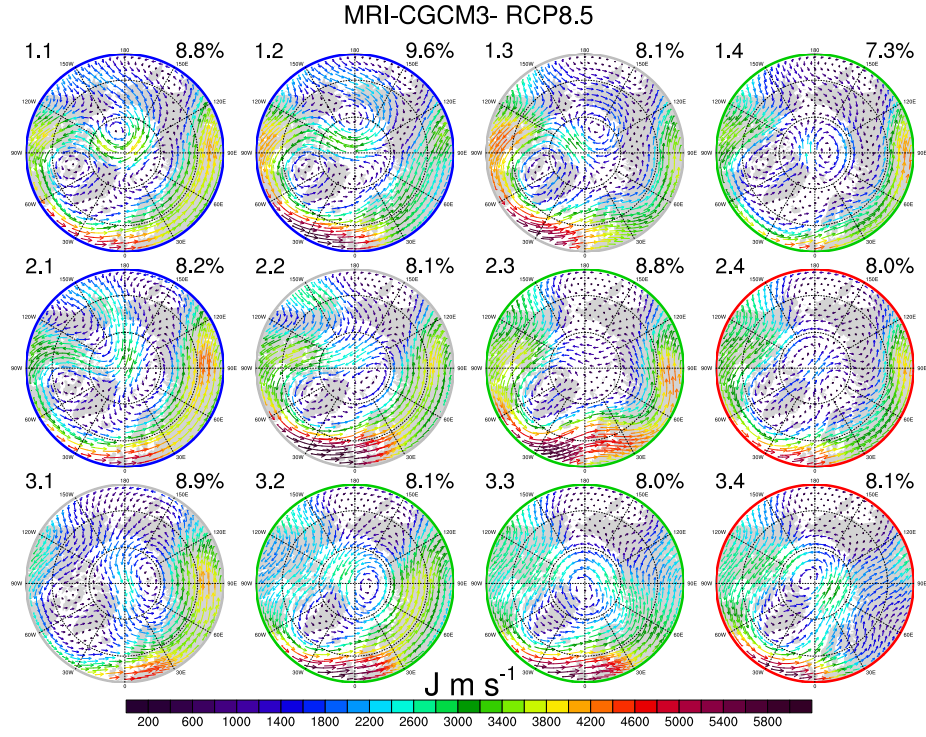
S 6: As Figure 1 but for HadGEM2-CC.



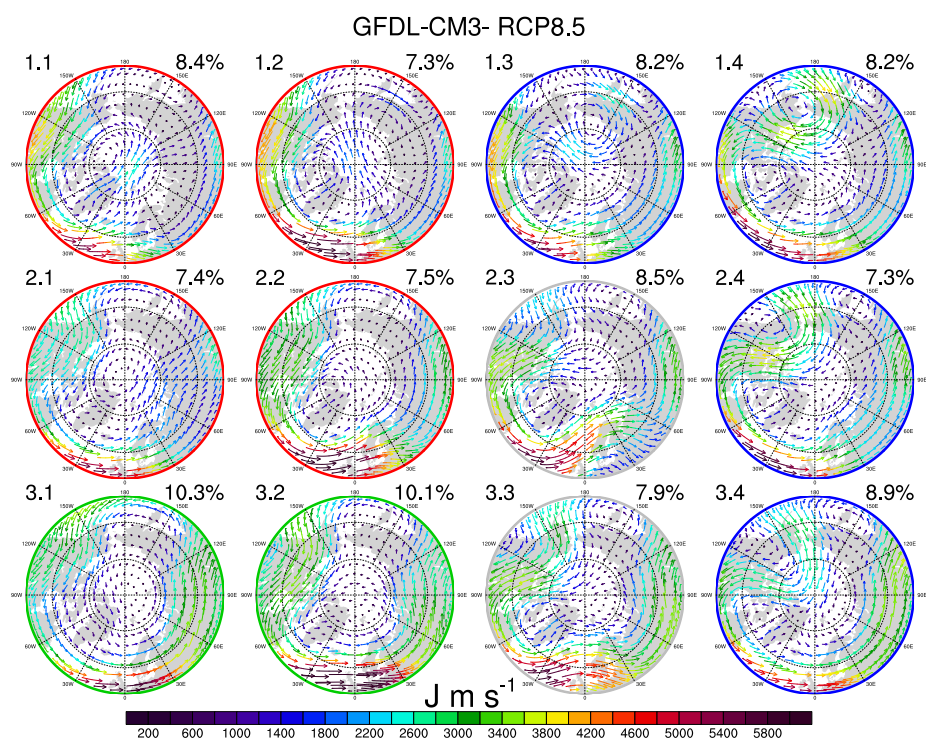
S 7: As Figure 1 but for MPI-ESM-LR.



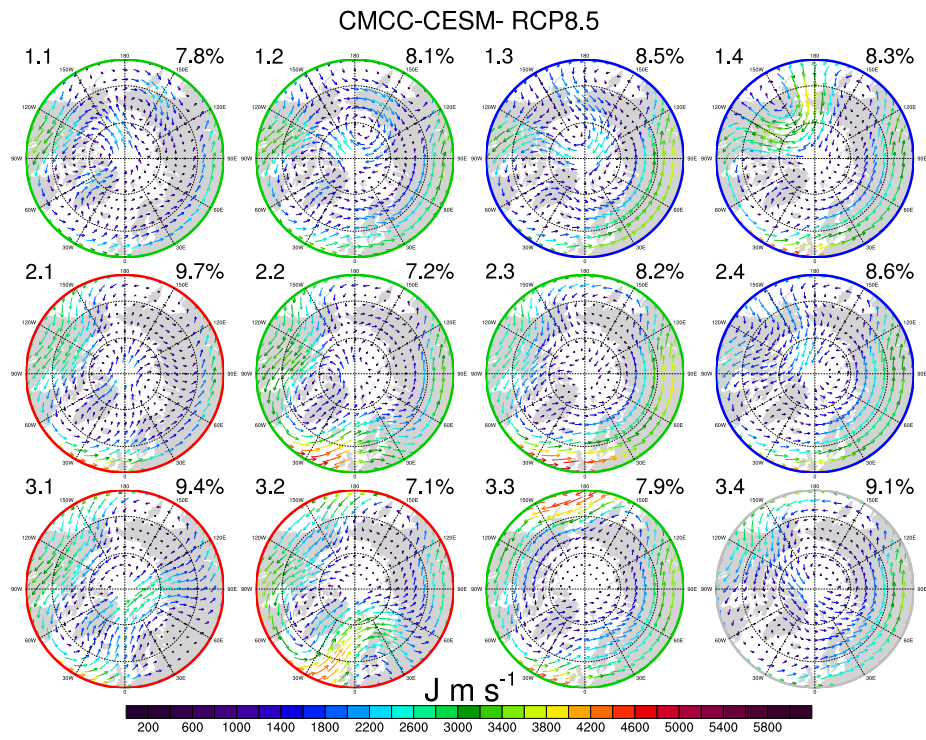
S 8: As Figure 1 but for MPI-ESM-MR.



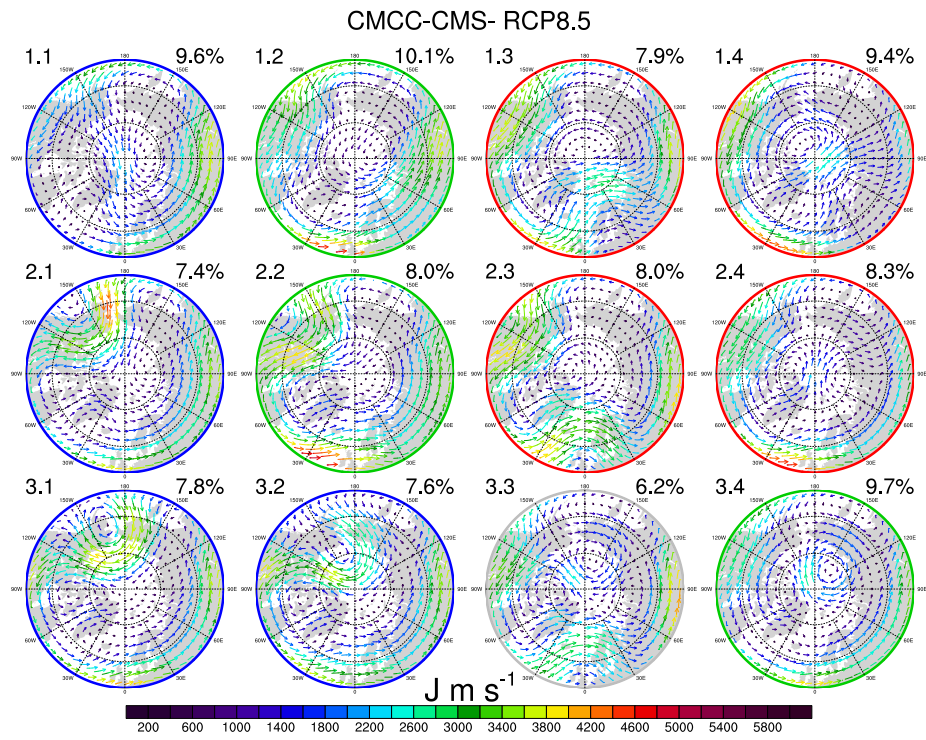
S 9: SOM with 4 columns and 3 rows of the 500 hPa horizontal temperature flux, derived from winter data of the RCP8.5 run of the MRI-CGCM3 model. Numbers in the top left corner denote the name of the pattern, number shown in the top right corner denote the relative occurrence frequencies for each pattern. Colored frames denote grouping to the pathways: red means Atlantic pathway, green means Continental pathway, blue means Pacific pathway and grey means miscellaneous pathway.



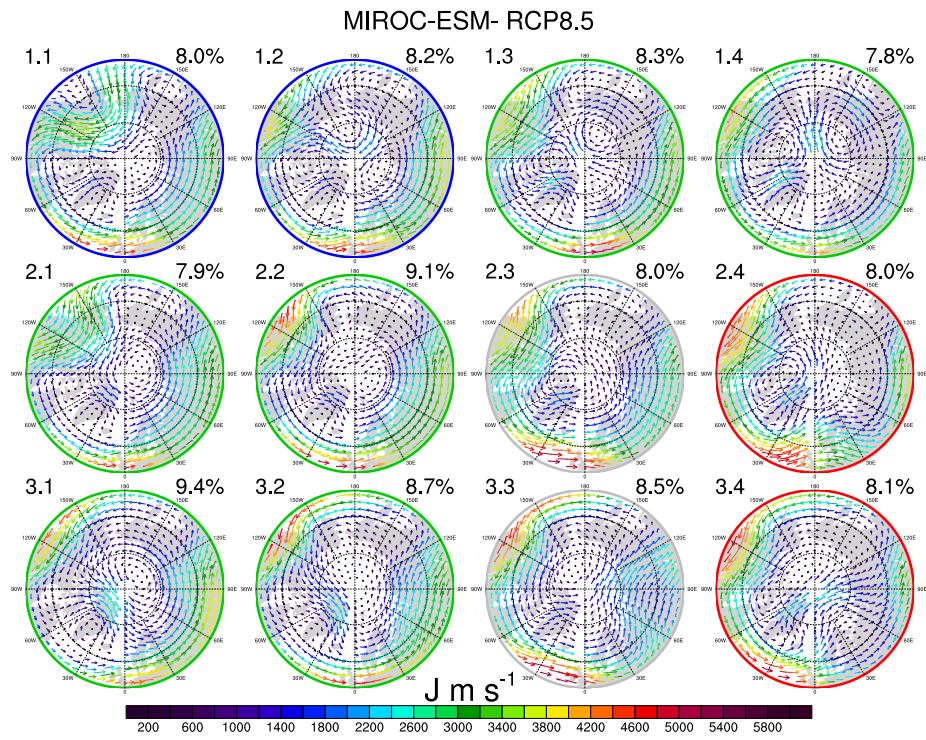
S 10: As Figure 9 but for MPI-ESM-MR.



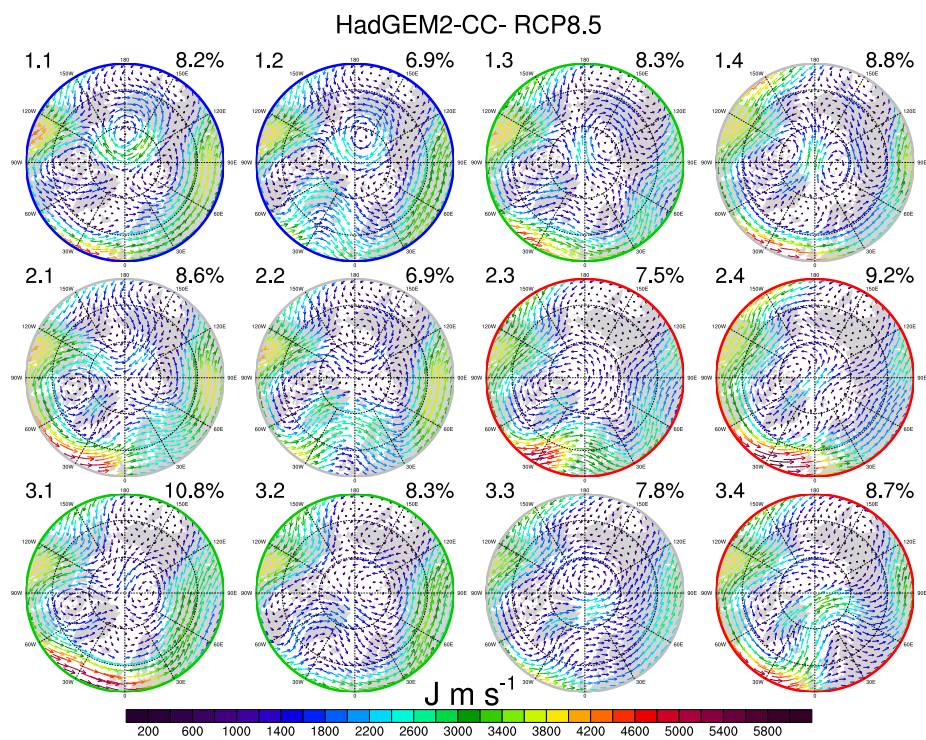
S 11: As Figure 9 but for MPI-ESM-MR.



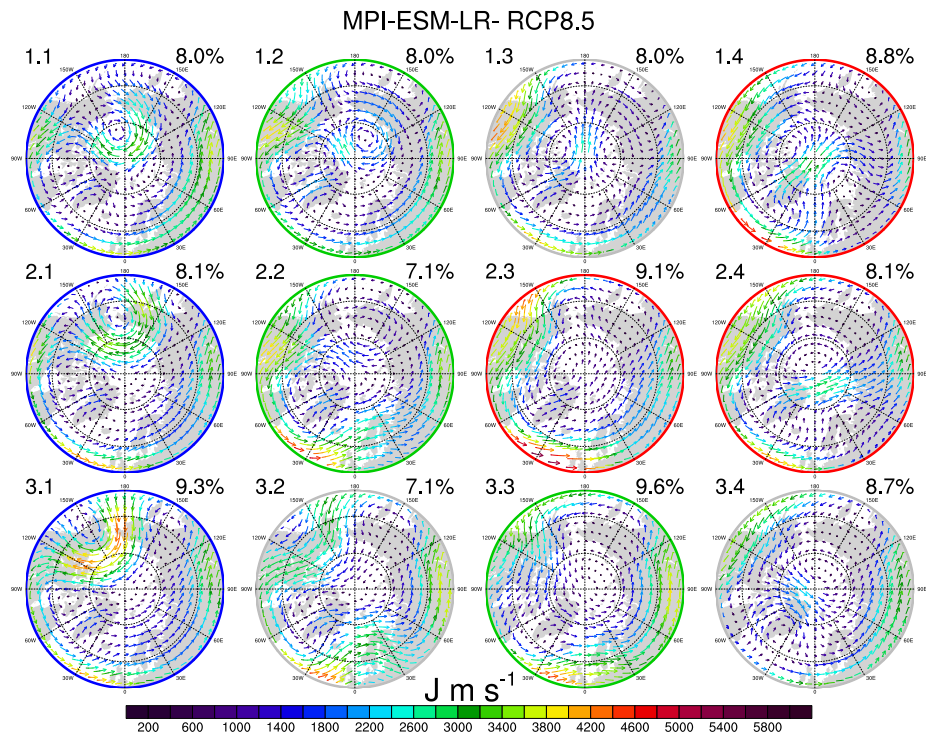
S 12: As Figure 9 but for MPI-ESM-MR.



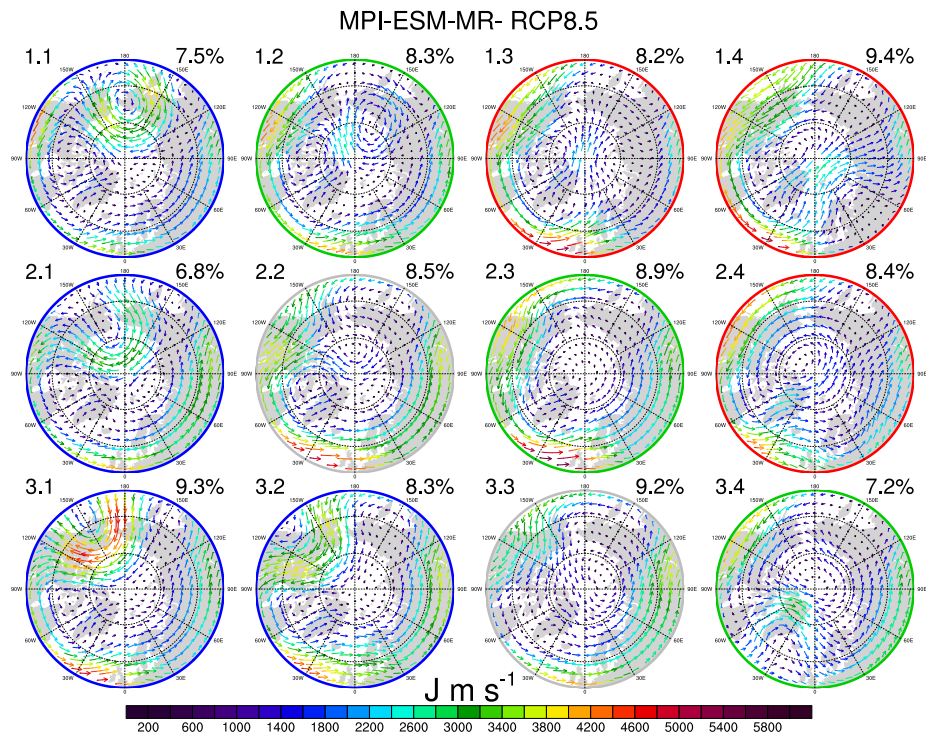
S 13: As Figure 9 but for MPI-ESM-MR.



S 14: As Figure 9 but for MPI-ESM-MR.



S 15: As Figure 9 but for MPI-ESM-MR.



S 16: As Figure 9 but for MPI-ESM-MR.