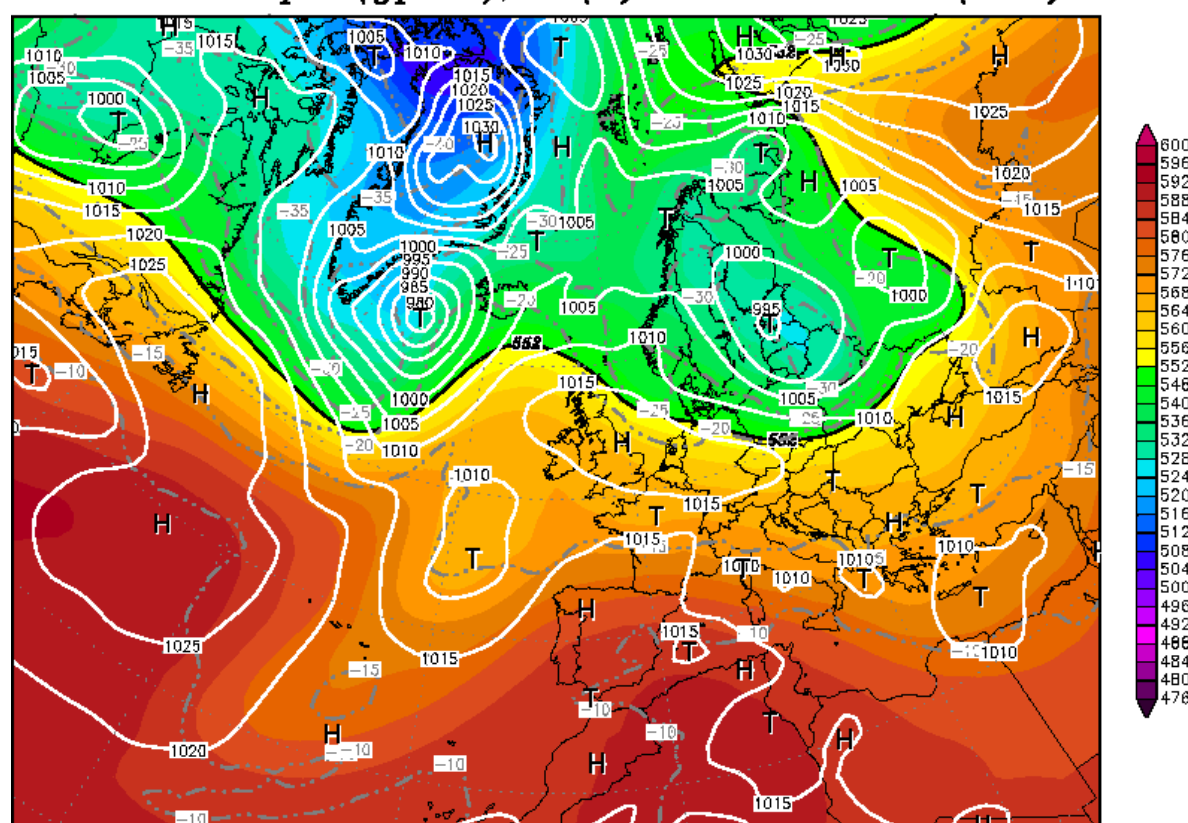


Article

Supplementary Materials for the Paper “High-resolution COSMO-CLM Modeling and an Assessment of Mesoscale Features Caused by Coastal Parameters at near-shore Arctic Zones (Kara Sea)”

Vladimir Platonov and Alexander Kislov

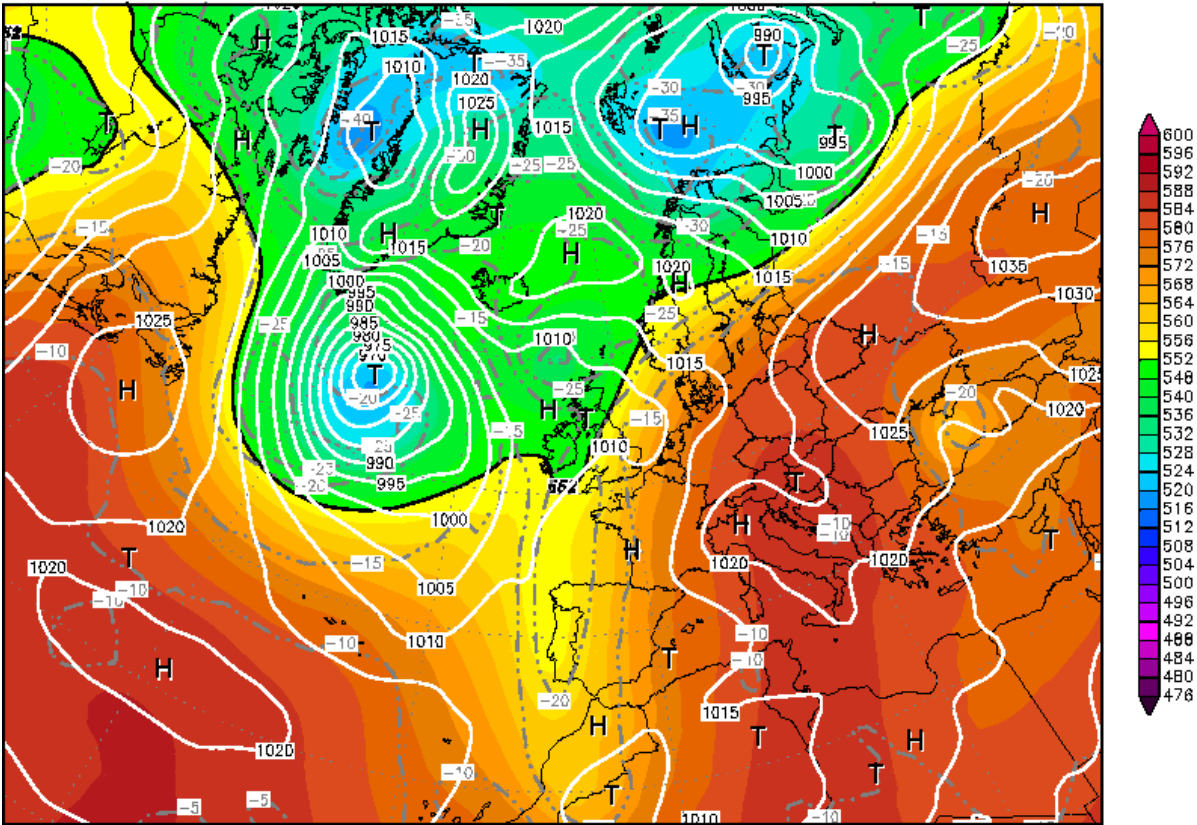
Init : Wed,10OCT2012 00Z Valid: Wed,10OCT2012 00Z
500 hPa Geopot.(gpdam), T (C) und Bodendr. (hPa)



Daten: GFS—Modell des amerikanischen Wetterdienstes
(C) Wetterzentrale
www.wetterzentrale.de

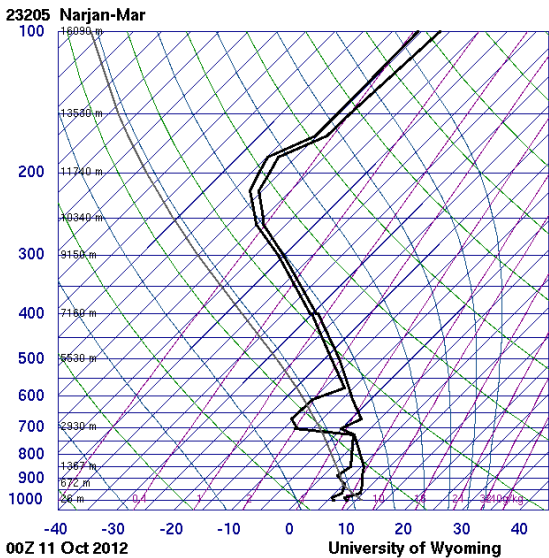
Figure S1. Surface analysis and AT500 map on 10 October, 2012, at 0000 GMT, source: GFS. Color represents the 500 mb geopotential height (gpdam), white lines are isobars of surface pressure (hPa).

Init : Sat,20OCT2012 00Z Valid: Sat,20OCT2012 00Z
500 hPa Geopot.(gpdm), T (C) und Bodendr. (hPa)

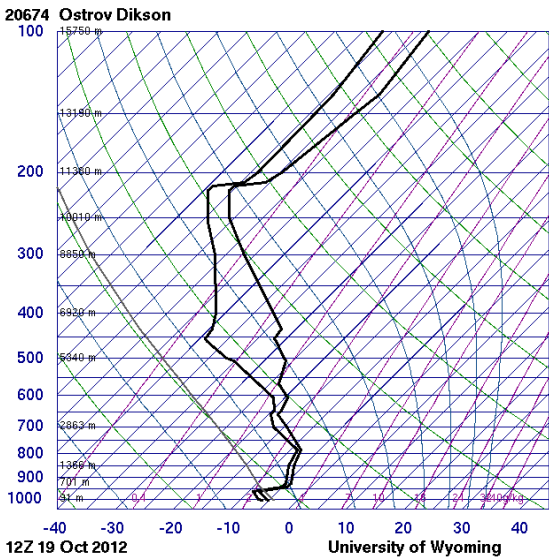


Daten: GFS-Modell des amerikanischen Wetterdienstes
(C) Wetterzentrale
www.wetterzentrale.de

Figure S2. Surface analysis and AT500 map on 20 October, 2012, at 0000 GMT, source: GFS. Color represents the 500 mb geopotential height (gpdam), white lines are isobars of surface pressure (hPa).

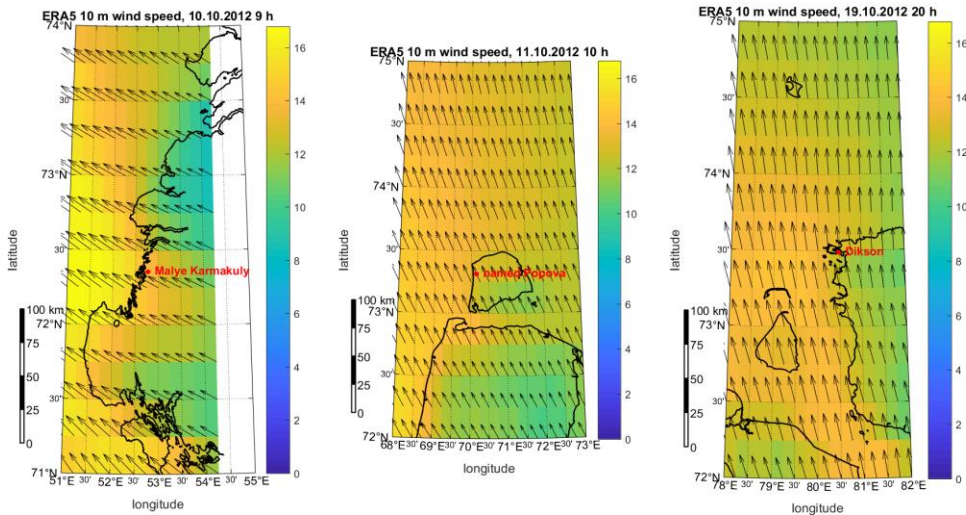


(a)

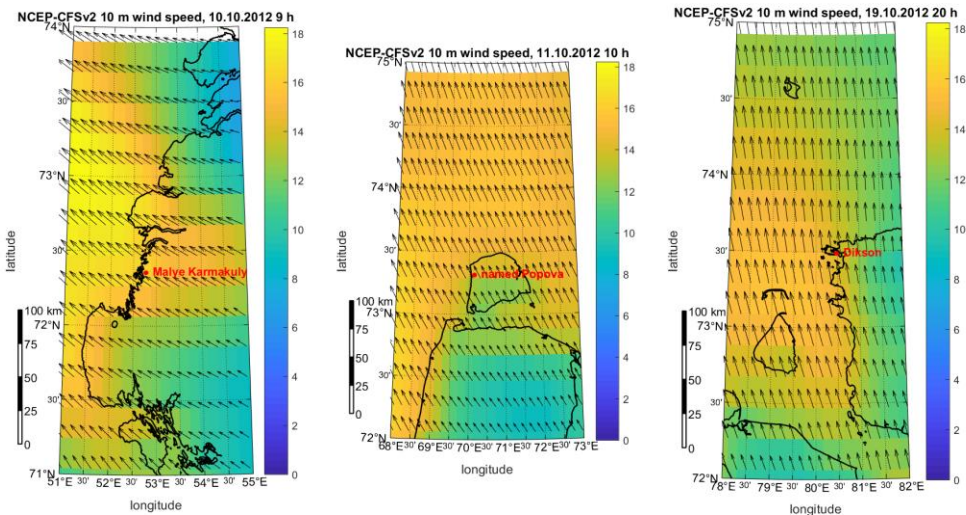


(b)

Figure S3. Atmospheric soundings: (a) at Naryan-Mar on 11 October, 2012, at 0000 GMT; (b) at Dikson Island on 19 October, 2012, at 1200 GMT. Source: University of Wyoming.



14 **Figure S4.** Wind speed (m/s) and direction based on the ERA5 data over three regions.



15 **Figure S5.** Wind speed (m/s) and direction based on the NCEP-CFSv2 data over three regions.