

Supplementary Material: Robust Nocturnal and Early Morning Rainfall Peaks over Continental East Asia in a Global Multiscale Modeling Framework

Yi Zhang ^{1,*}, Haoming Chen ¹ and Dan Wang ²

¹ State Key Laboratory of Severe Weather (LaSW), Chinese Academy of Meteorological Sciences, China Meteorological Administration, 100081, Beijing, China; chenhm@cma.cn (H.C.)

² Numerical Weather Prediction Center, National Meteorological Center, China Meteorological Administration, 100081, Beijing, China; wangd@cma.cn (D.W.)

* Correspondence: yizhang@cma.cn

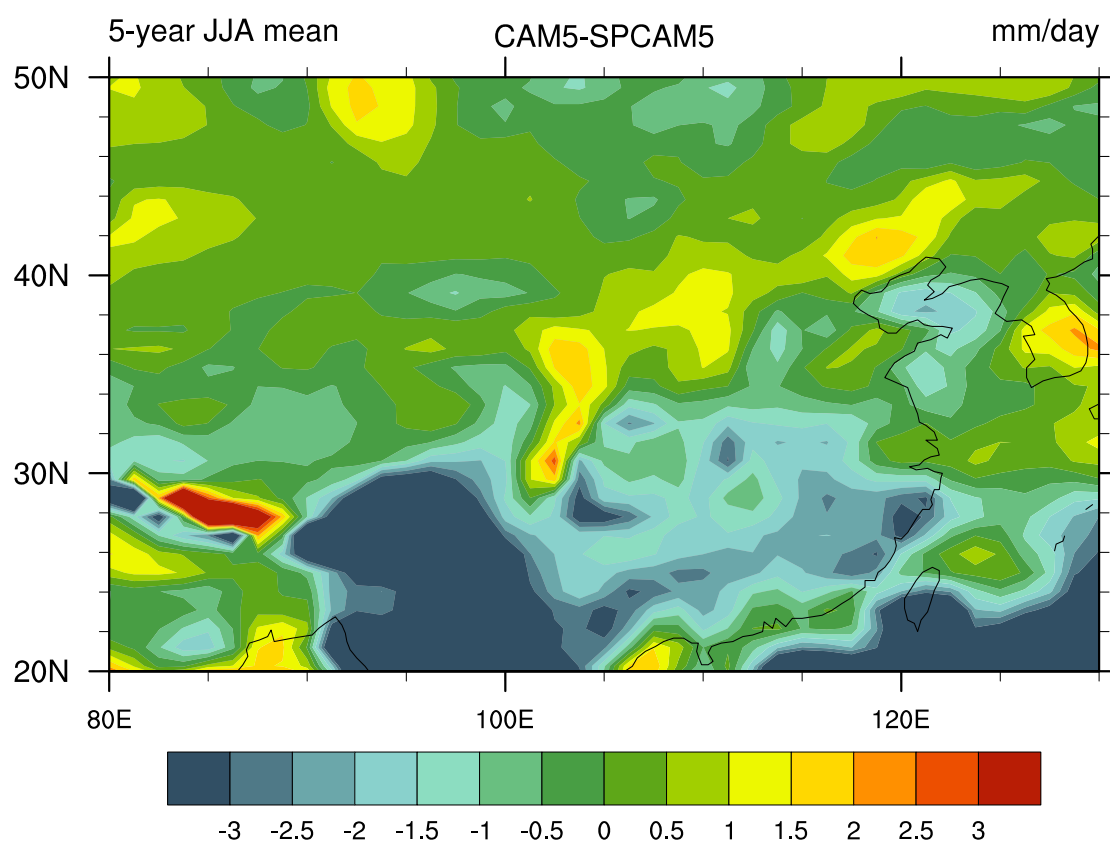


Figure S1. The difference of five-year mean precipitation rates (unit: mm.day-1) in June–July–August (JJA) months between CAM5 and SPCAM5 (CAM5 minus SPCAM5) over continental East Asia.



© 2018 by the authors. Submitted for possible open access publication under the terms and conditions of the Creative Commons Attribution (CC BY) license (<http://creativecommons.org/licenses/by/4.0/>).