

Inverted Repeats

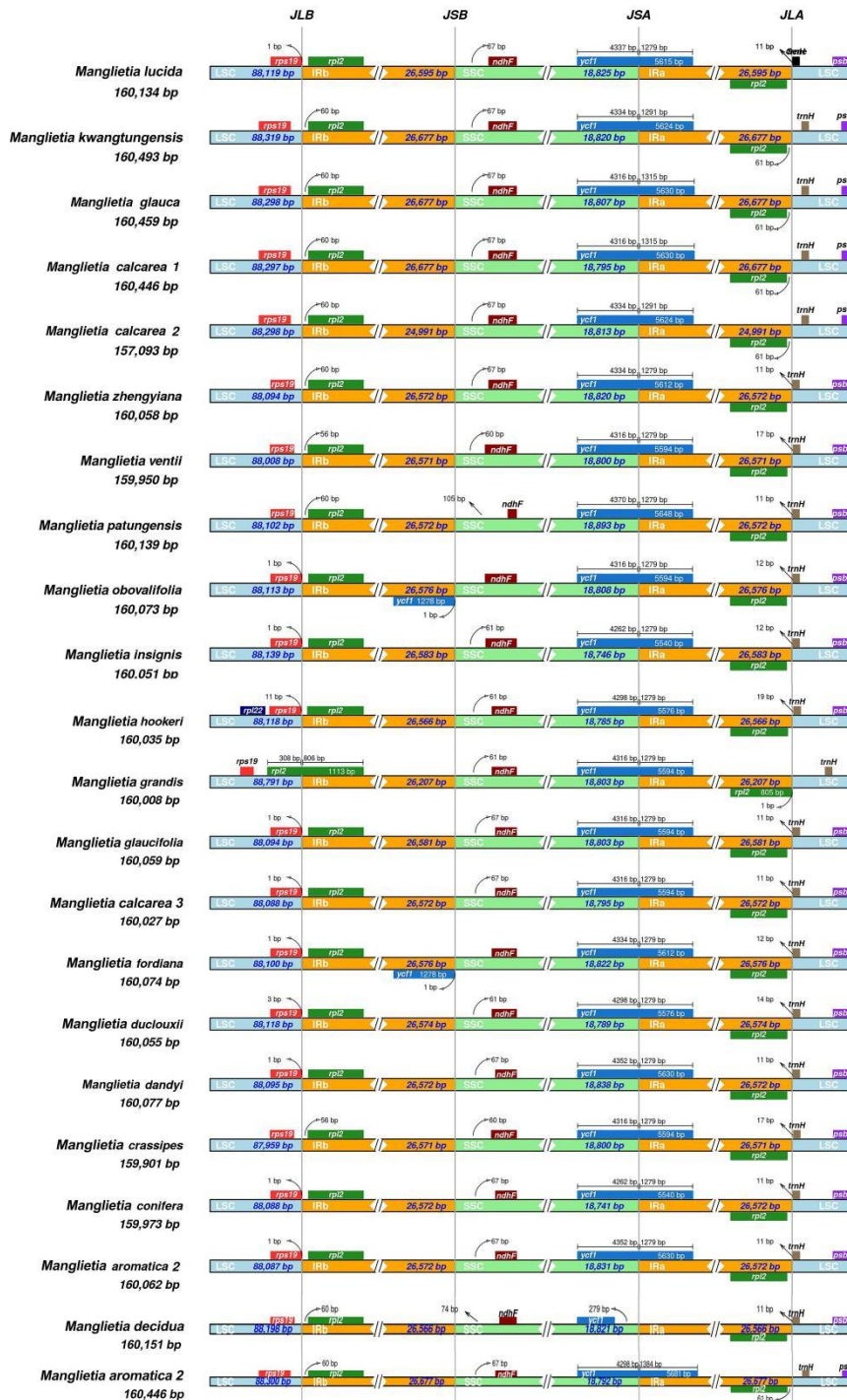


Figure S1. Comparison of the borders of LSC, SSC, and IR regions in twenty-two complete chloroplast genomes. JLB (IRb/LSC), JSB (IRb/SSC), JSA (SSC/IRa) and JLA (IRa/LSC) denote the junctions between each corresponding region in the genome.

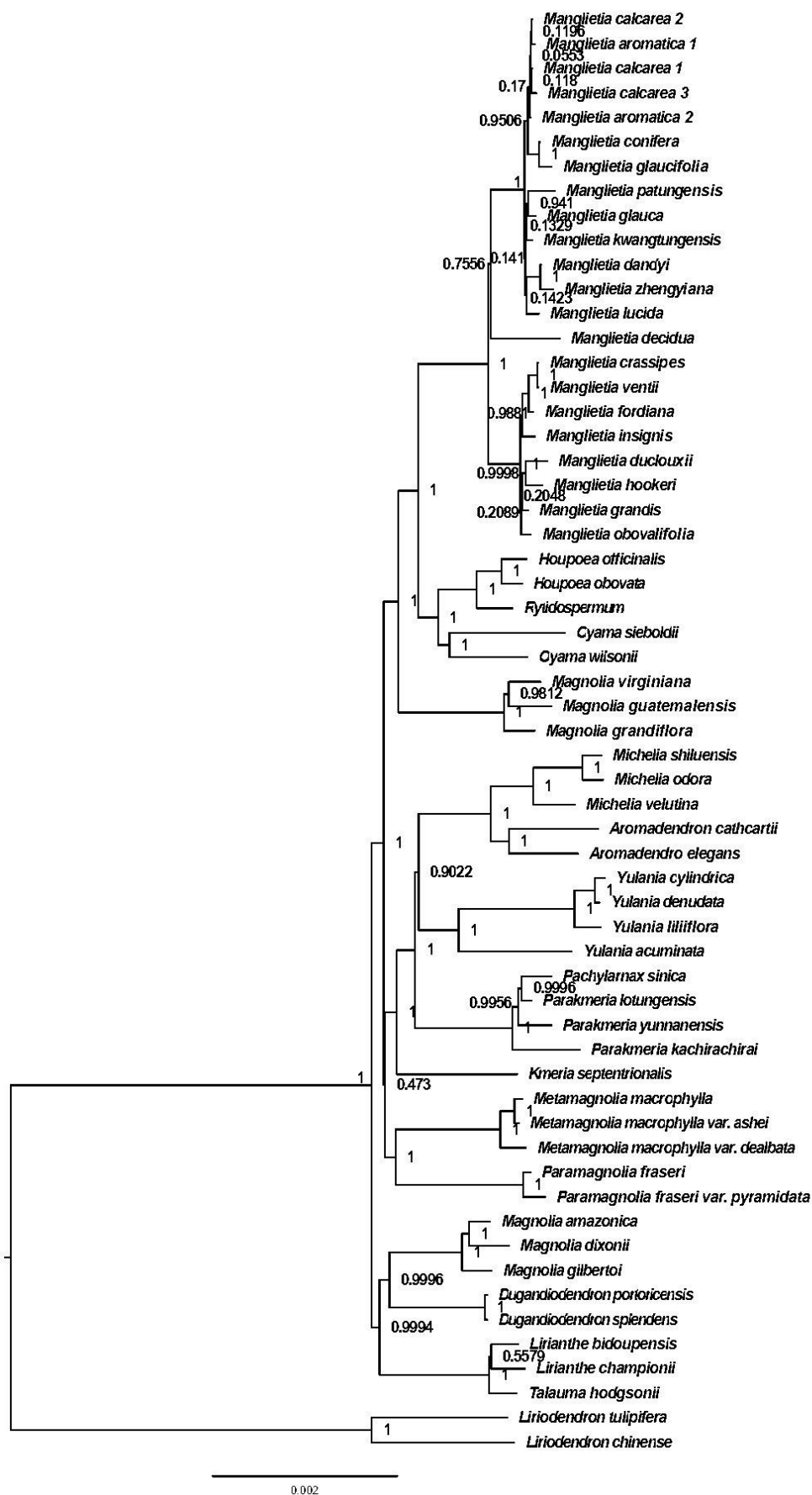


Figure S2. Bayesian inference based on a combined data matrix of 77 plastid genes for 59 species.