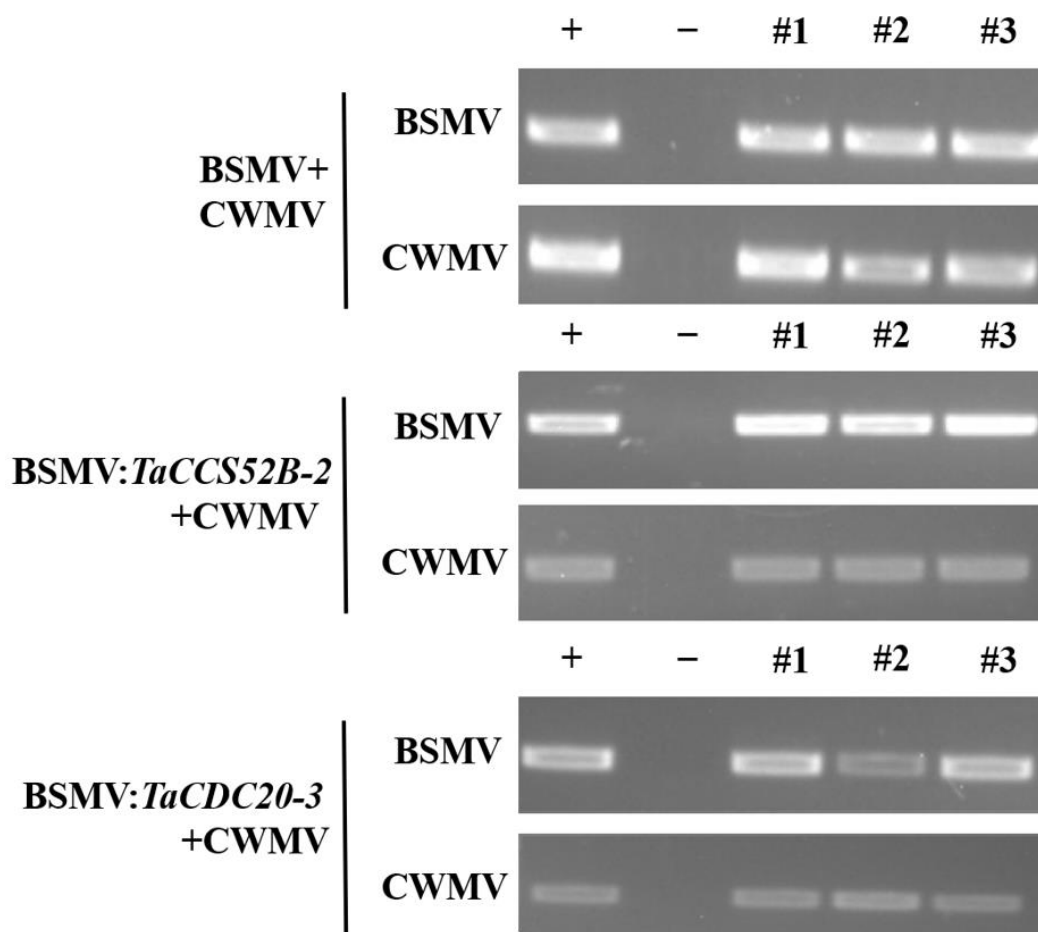


**Figure S1.** Reverse transcription PCR (RT-PCR) detection of CWMV infection. Total RNA from healthy wheat plants was used as a negative control (-). CWMV RNA 2 was used as a positive control (+). Three plants were analyzed for each treatment.



**Figure S2.** Detection of CWMV and BSMV by RT-PCR. virus-infected and virus-uninfected wheat were used as positive (+) and negative (-) controls, respectively.