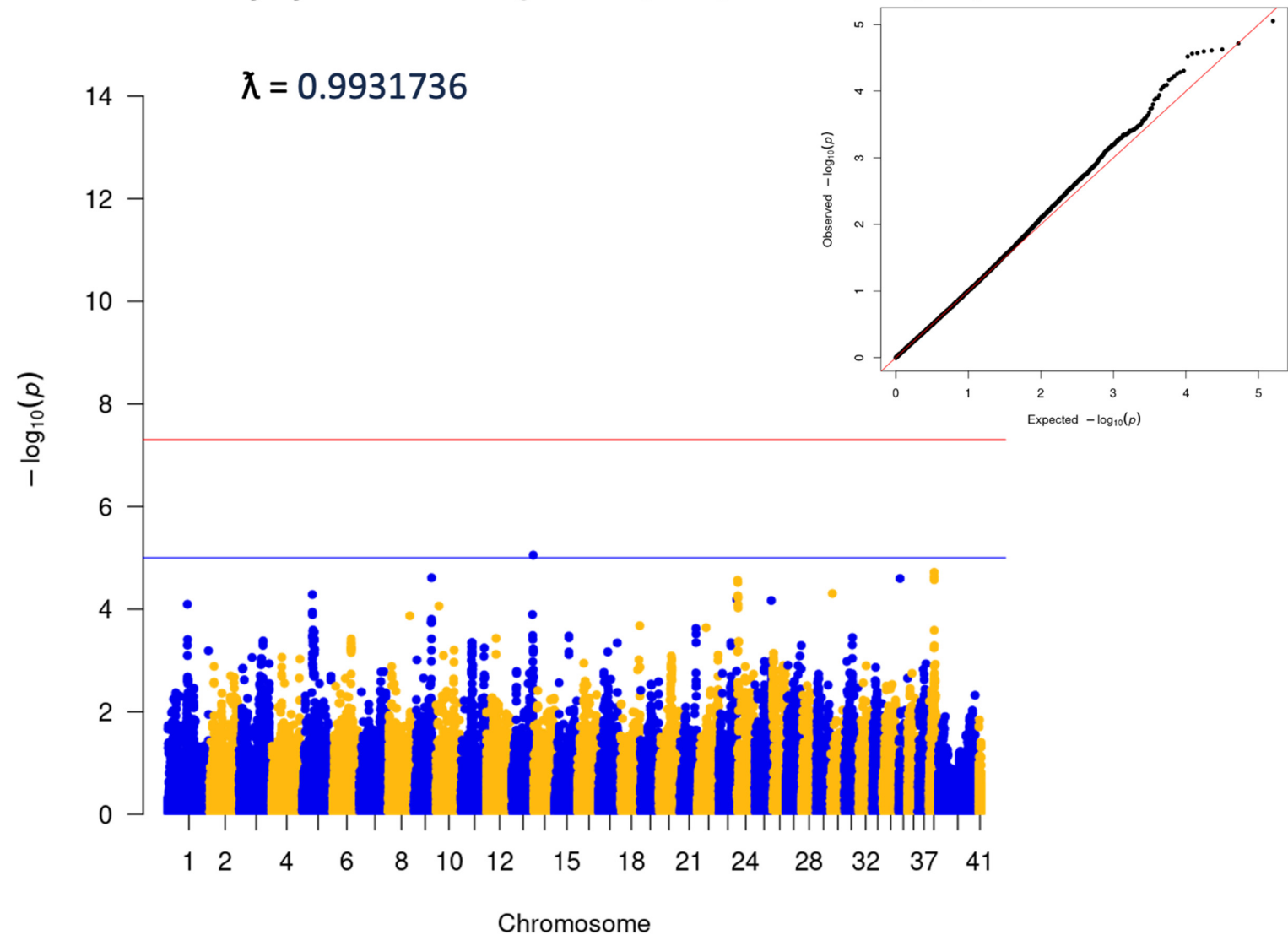
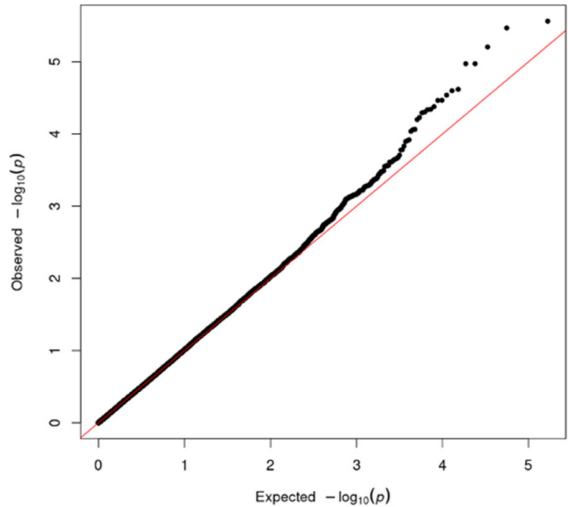
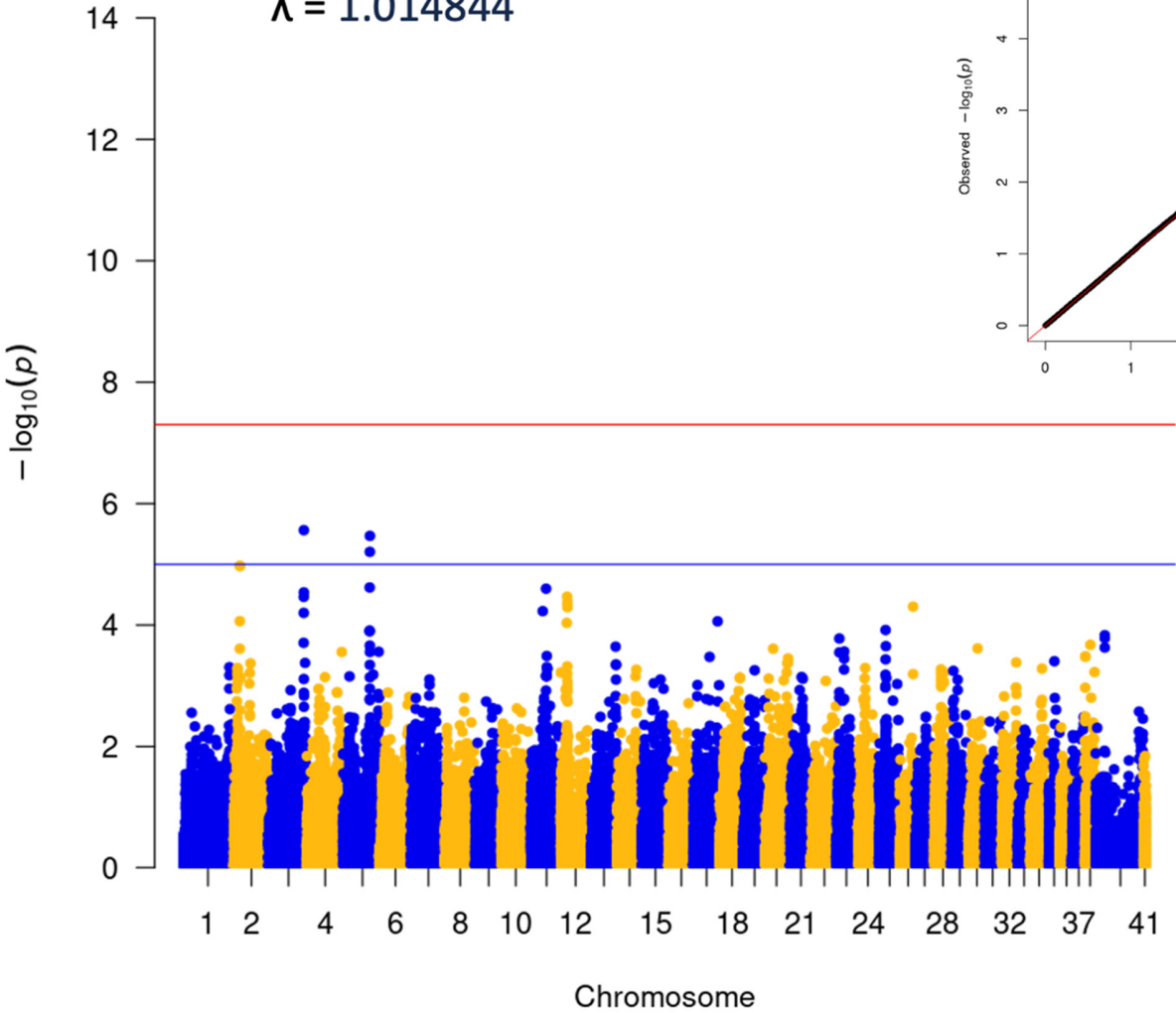


Cherry eye - Std. Bulldog cases (1164) vs controls (932)



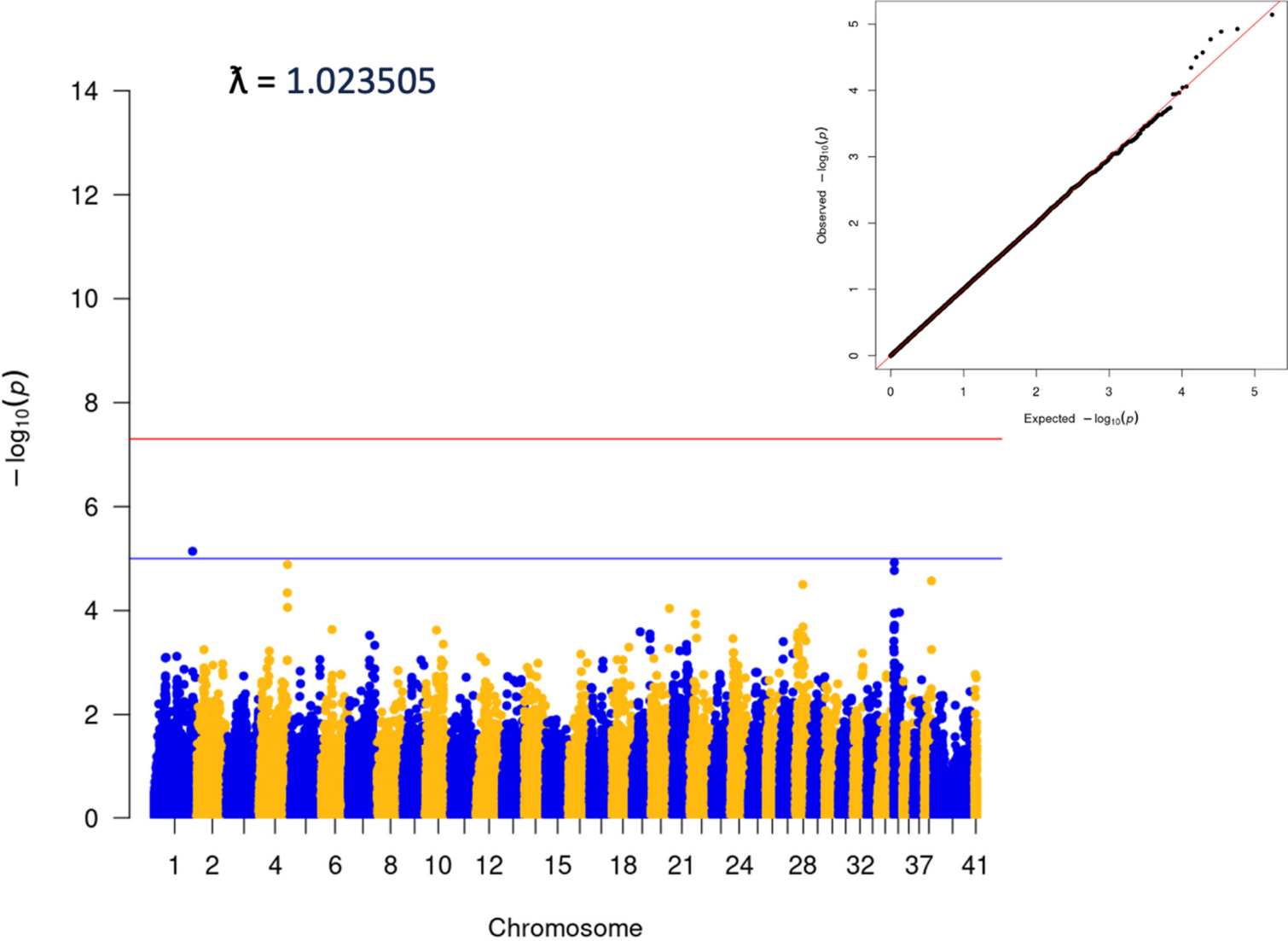
Cherry eye - French Bulldog cases (595) vs controls (660)

$\lambda = 1.014844$



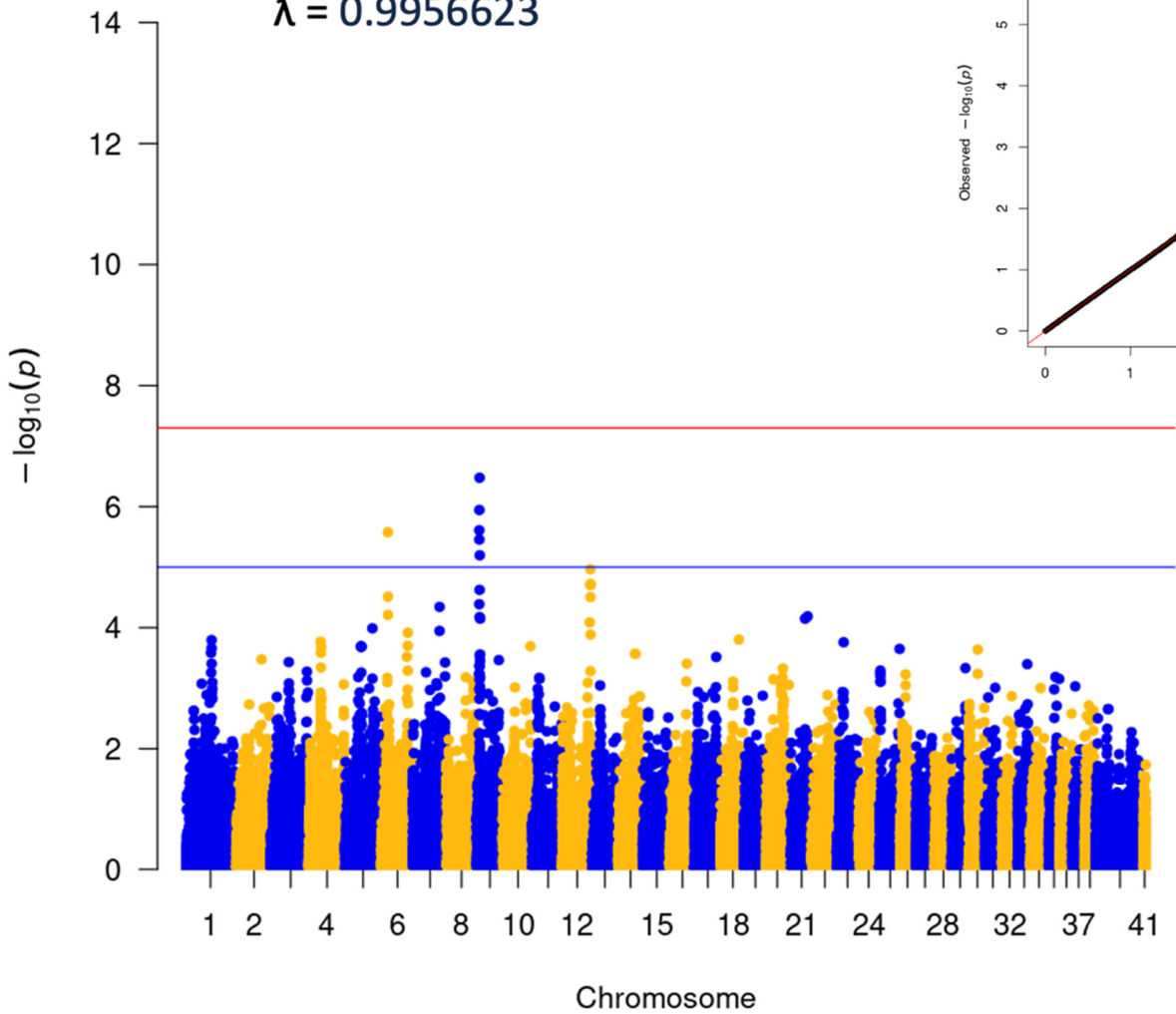
Cherry eye - Great Dane cases (231) vs controls (464)

$\lambda = 1.023505$



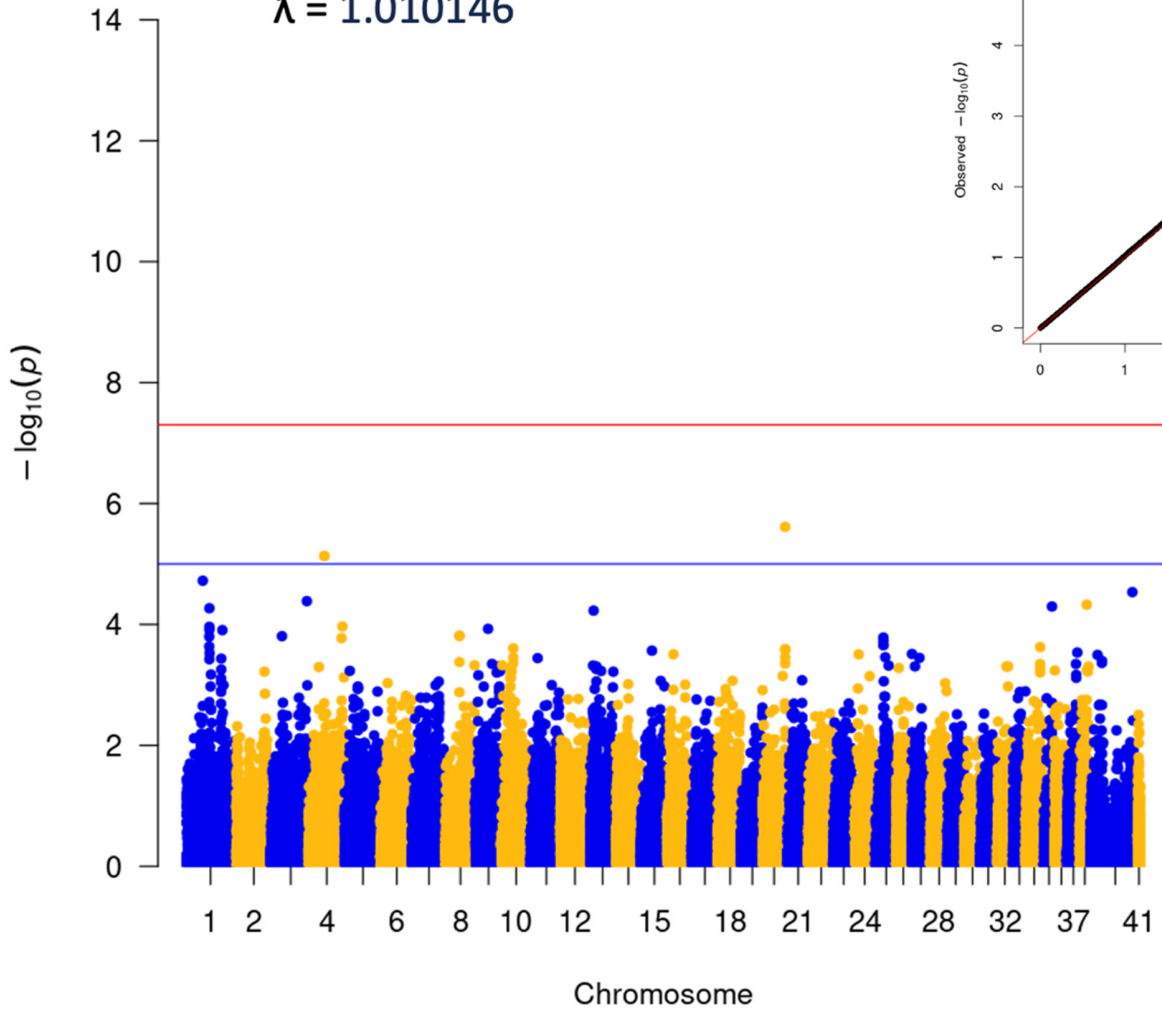
Cherry eye - Cocker Spaniel cases (225) vs controls (450)

$\lambda = 0.9956623$



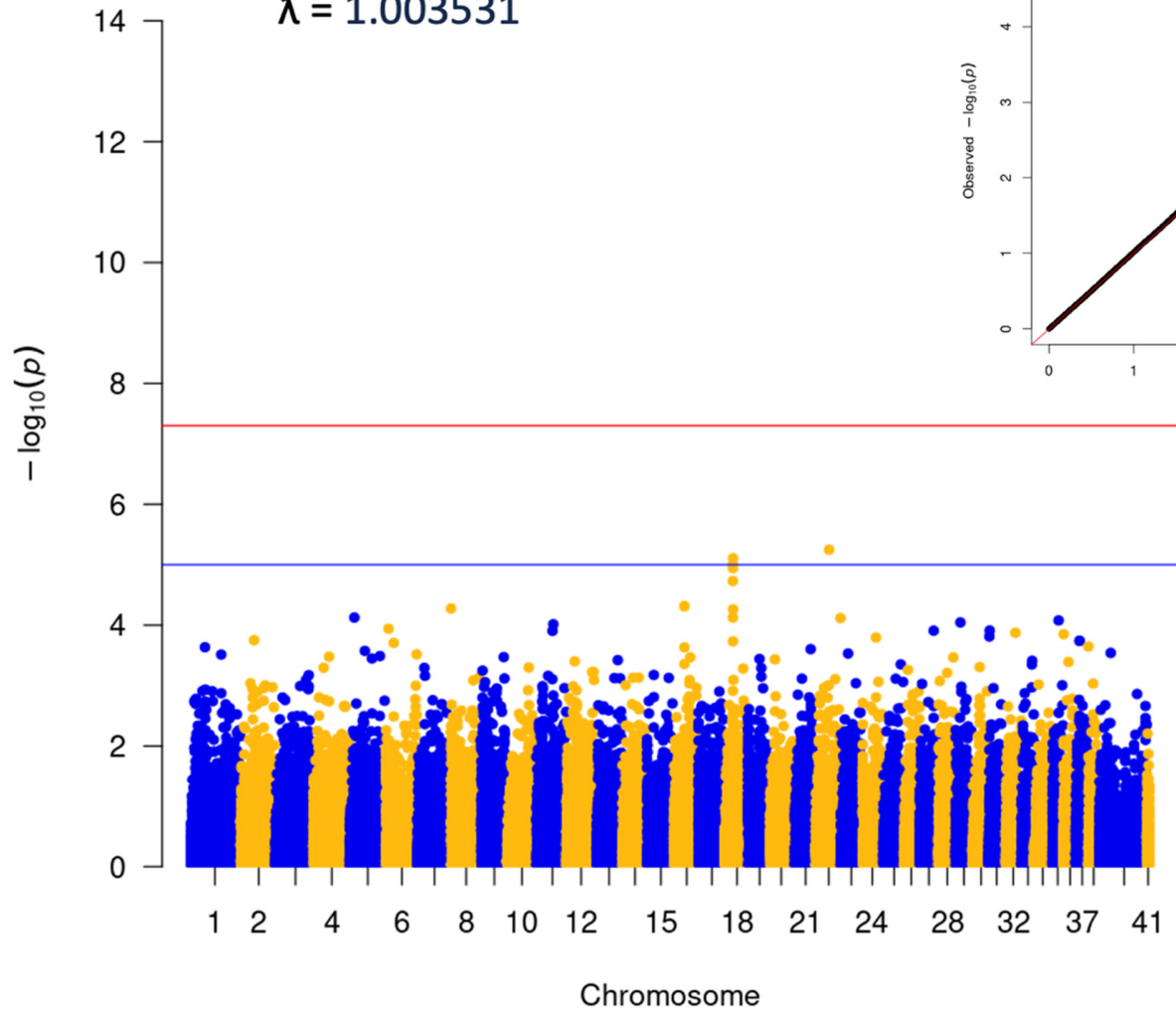
# Cherry eye - Boston Terrier cases (230) vs controls (246)

$\lambda = 1.010146$



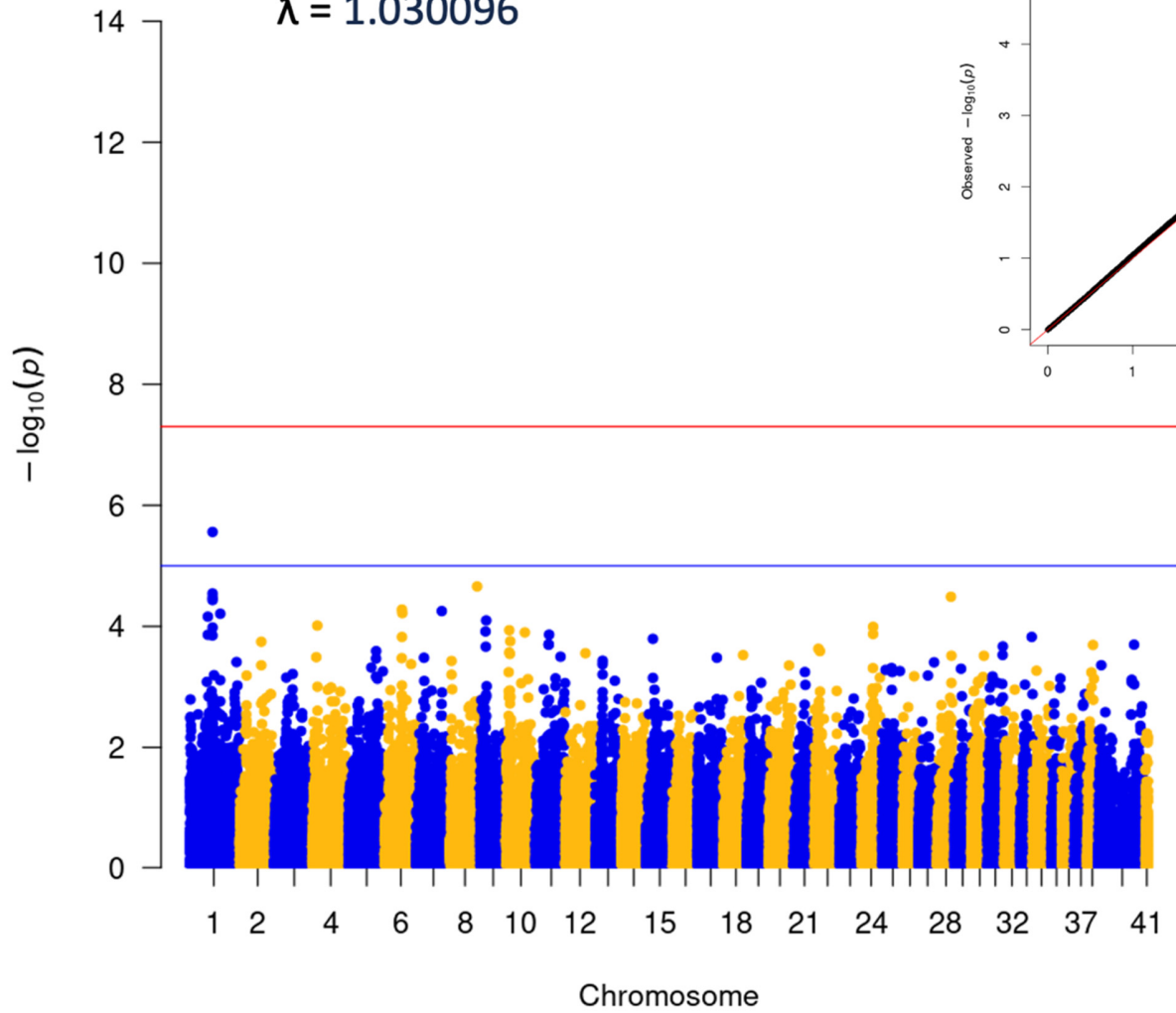
# Cherry eye - Chihuahua cases (187) vs controls (232)

$\lambda = 1.003531$



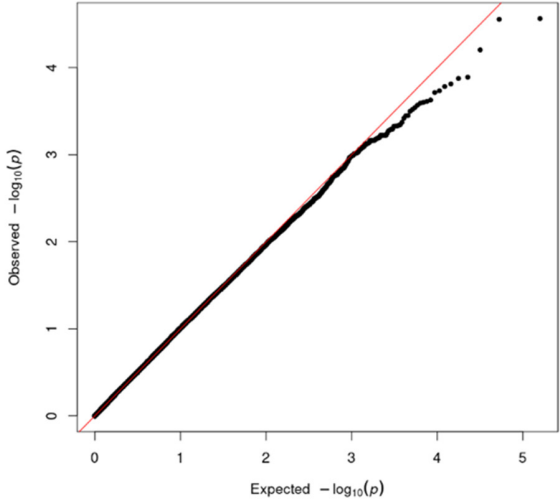
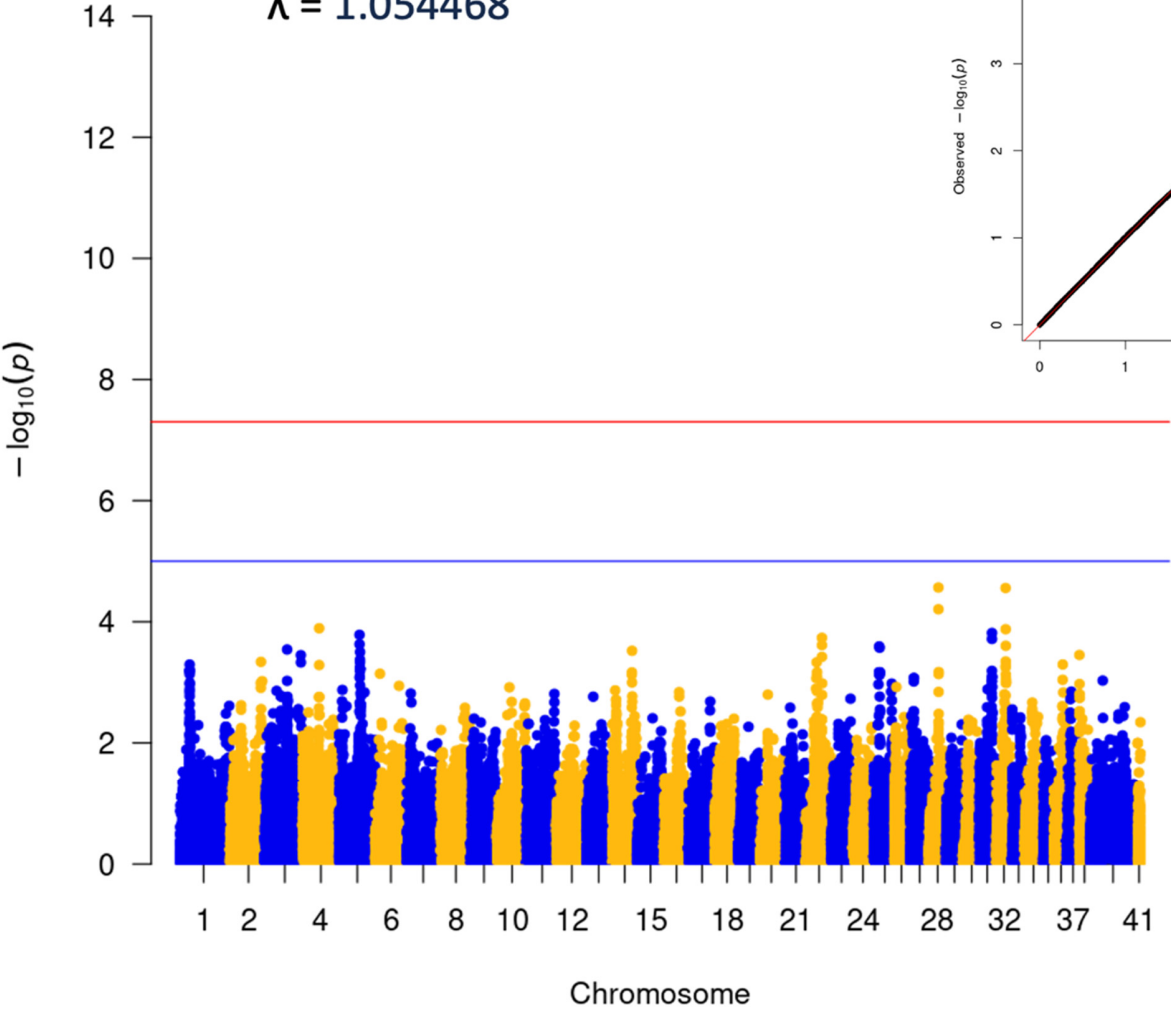
# Cherry eye - Shih Tzu cases (170) vs controls (373)

$\lambda = 1.030096$



Cherry eye - Rottweiler cases (111) vs controls (136)

$\lambda = 1.054468$





Cherry eye - Puggle cases (114) vs. controls (177)

$\lambda = 1.011103$

