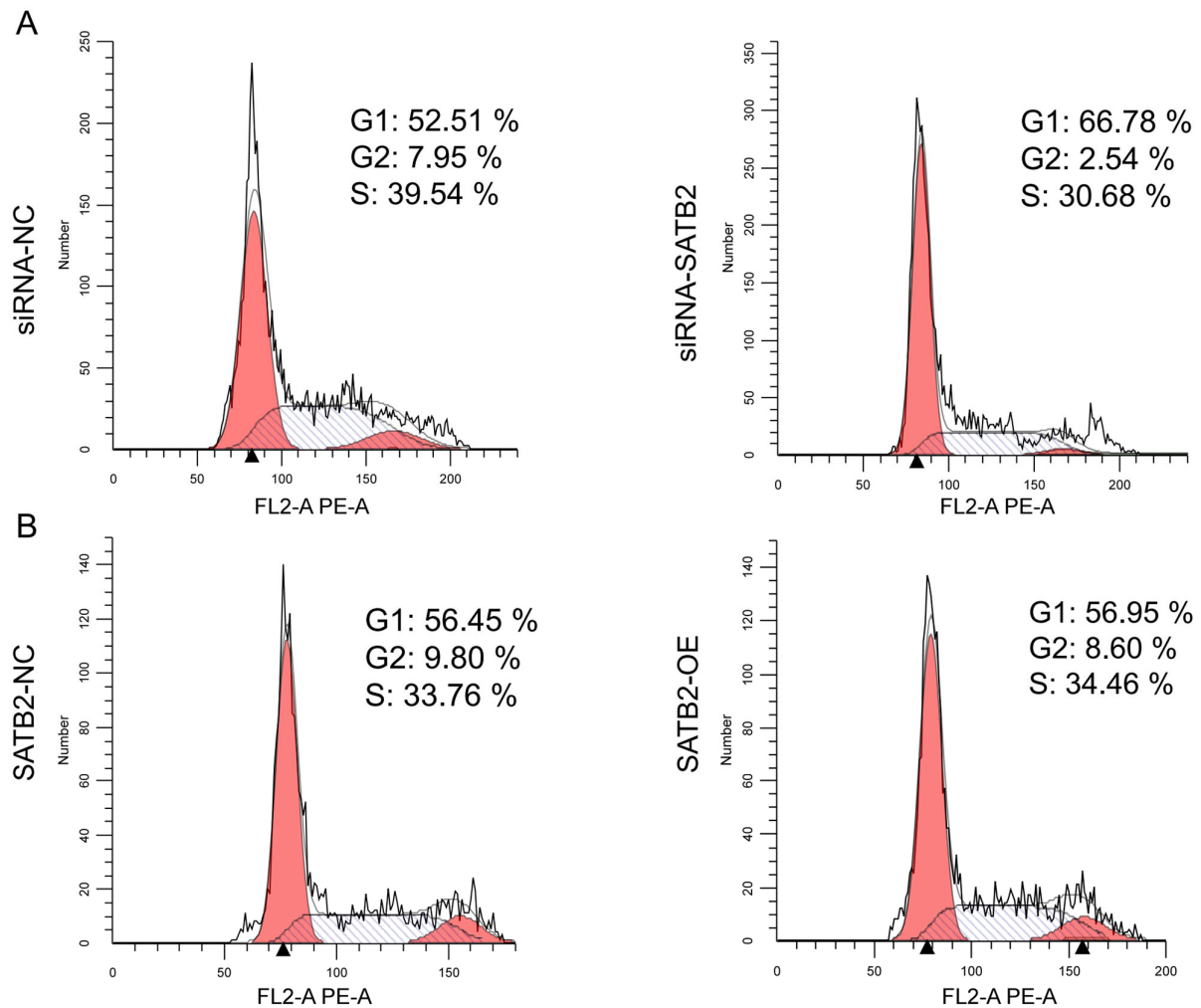
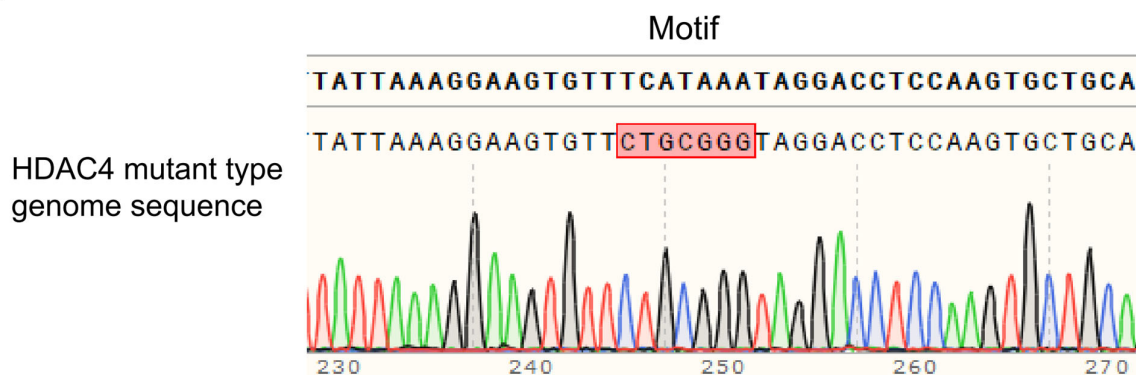


# Supplementary File

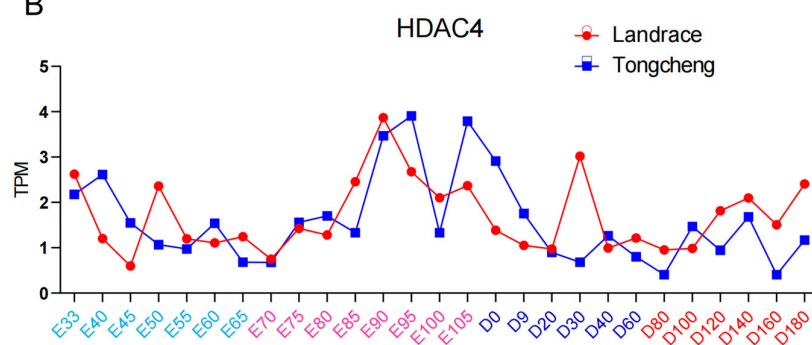


**Figure S1.** Flow cytometry to detect the cell cycle after transfection with (A) siRNA-NC and siRNA-SATB2, and (B) SATB2-NC and SATB2-OE.

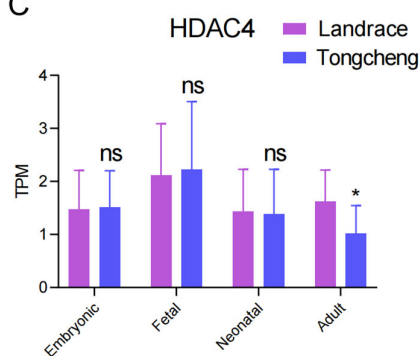
A



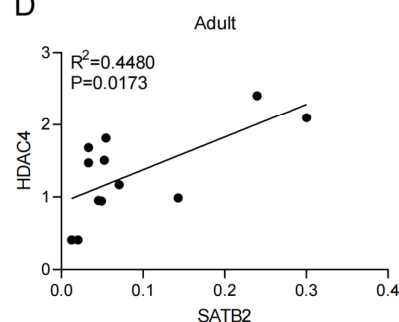
B



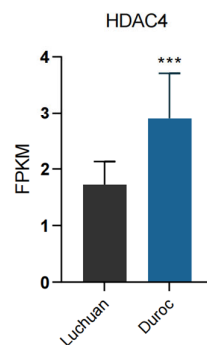
C



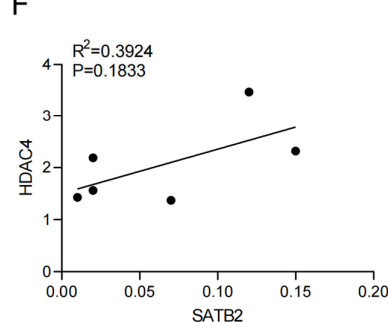
D



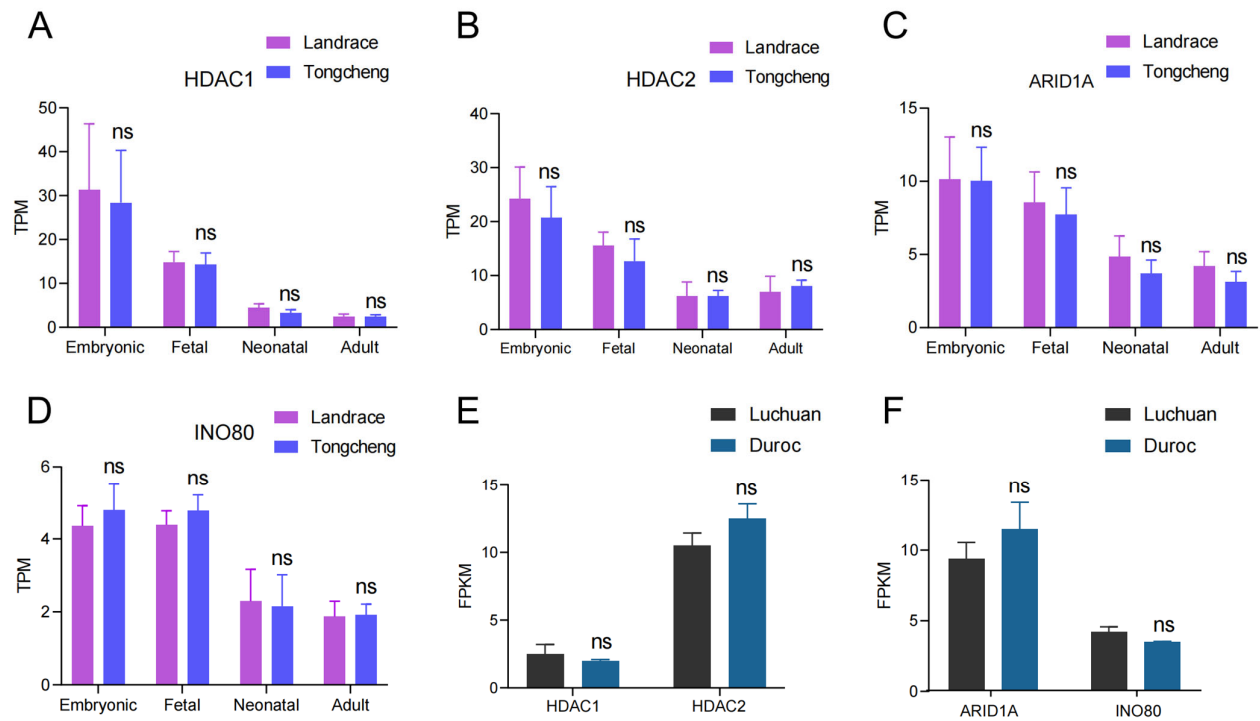
E



F



**Figure S2.** The HDAC4 characters of in the obese-type and lean-type pigs. (A) The sequences of mutation HDAC4. (B) HDAC4 characters various expression patterns among four development phases in the Landrace and Tongcheng pigs. (C) HDAC4 was higher expressed in the adult phases in the Landrace pig compared to the Tongcheng pig. (D) Correlation of HDAC4 with SATB2 in the adult phase of Landrace and Tongcheng pigs. (E) HDAC4 was higher expressed in the Duroc compared to Luchuan pigs. (F) Correlation of HDAC4 with SATB2 in Luchuan and Duroc pigs. Represents \*  $p < 0.05$ , \*\*\*  $p < 0.001$ , ns (not significant).



**Figure S3.** The chromatin remodelers in the obese-type and lean-type pigs. (A) HDAC1, (B) HDAC2, (C) ARID1A, and D INO80 in the Landrace and Tongcheng pigs. (E) HDAC1, HDAC2, and (F) ARID1A, INO80 in the Luchuan and Duroc pigs. Represents ns (not significant).