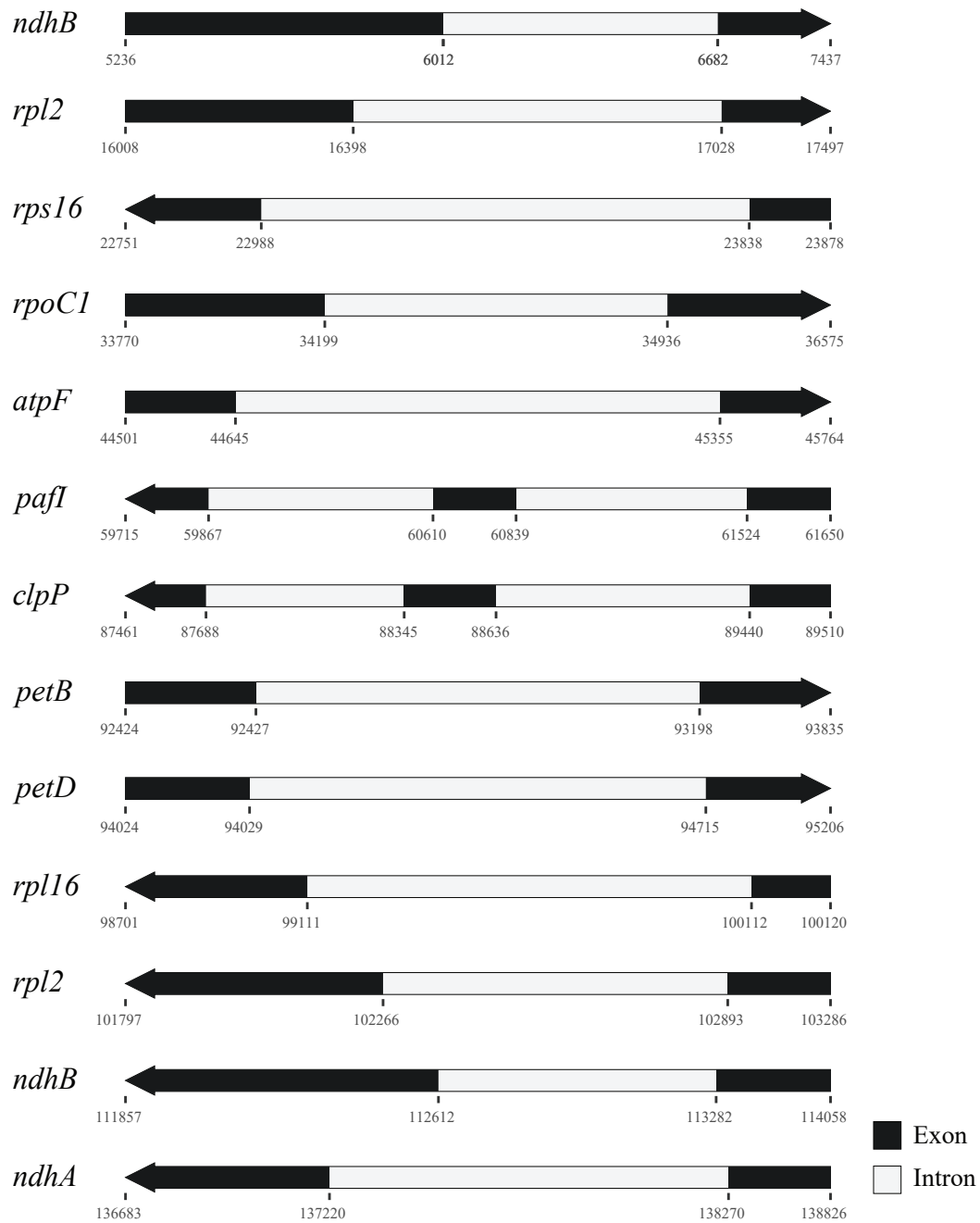


A)



B)

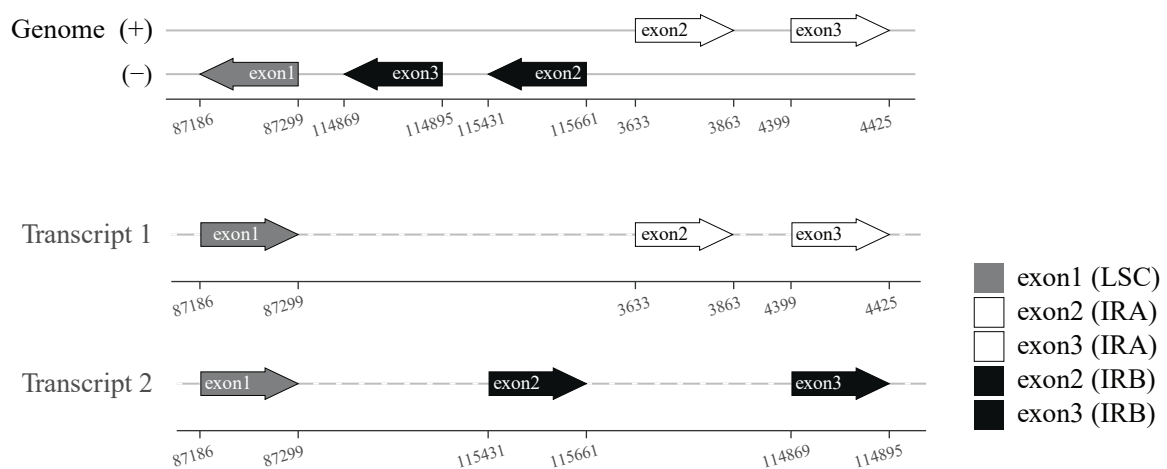


Figure S2. Splicing events in endive chloroplast genes. A) Cis-splicing genes. Genes are shown as oriented arrows with exons (dark boxes) and introns (white boxes). The numbers underneath mark the region boundaries. B) Trans-splicing of the *rps12* gene. Exons are reported as oriented arrows. Exon 1 was in the LSC, while exons 2 and 3 were in the IRs.