

Table S1: Primer Information for CIMP Panel Genes

Primer Pair	Forward	Reverse	AT
<i>CAGNA1G</i> UM	TTG GAG TTT GGG TGT GAA GTG A	CAC AAA TCC CAC TTC CCC TAC A	55°
<i>CAGNA1G</i> M	GGA GTC GGT CGG TTG GTT C	AAA ACA TAC TAC CCG CGA AAC G	60°
<i>IGF2</i> UM	GGA TTG TGG GTG TTT AGT TTG GTT	CCT TTC CAC ACT ACA TCC CAA AA	58°
<i>IGF2</i> M	AGC GGT TTC GGT GTC GTT ATC	CGA ACG CCC AAC TCG ATT	62°
<i>NEUROG1</i> UM	TTG TTG GTT AAT TGG TGG TGT TGT	CAT ACC TCA ACC ACT AAT CAC CCA	55°
<i>NEUROG1</i> M	AAT TTA TGT TCG CGG GAG GTC	ACC AAC TTA ACC CGA ACC GA	55°
<i>RUNX3</i> UM	TTT GGG TTT ATG GGA ATA TG	TTC TCA CAA CAA CAA CAA CC	55°
<i>RUNX3</i> M	TGT TTT CGT TTA TTT TGT CG	CGC TAT TAT ACG TAT TCC CG	55°
<i>SOCS1</i> UM	GAT GGT TGG AGT TAG AAT TGG TTG TT	CTC TAT ACT CCA CAA AAC TCT TCC CA	60°
<i>SOCS1</i> M	GTA TTT TTT TGG TGC GCG ATA GTC	CGA CCG ACC TAA AAA TAC ACG C	66°
<i>CDKN2A (p16)</i> UM	TTA TTA GAG GGT GGG GTG GAT TGT	CAA CCC CAA ACC ACA ACC ATA A	56°
<i>CDKN2A (p16)</i> M	TAT TAG AGG GTG GGG CGG AT	ACC CCG AAC CGC GAC CGT AA	58°
<i>CRAPB1</i> UM	GAG GTT TTT TAG TTG GAG AGT GG	AAC TCA CAA AAC AAA AAC TAA CAC T	62°
<i>CRAPB1</i> M	GGA GGT TTT TTA GTT GGA GAG C	CTC GCA AAA CGA AAA CTA ACG	63°
<i>MLH1</i> UM	TTT TGA TGT AGA TGT TTT ATT AGG GTT GT	ACC ACC TCA TCA TAA CTA CCC ACA	60°
<i>MLH1</i> M	TAT ATC GTT CGT AGT ATT CGT GT	TCC GAC CCG AAT AAA CCC AA	60°

Figure S1: DNA integrity assessed by β -actin PCR analysis. This representative figure shows the electrophoretic profile of 5 DNA samples assayed for the amplification of the 586 bp β -actin fragment.

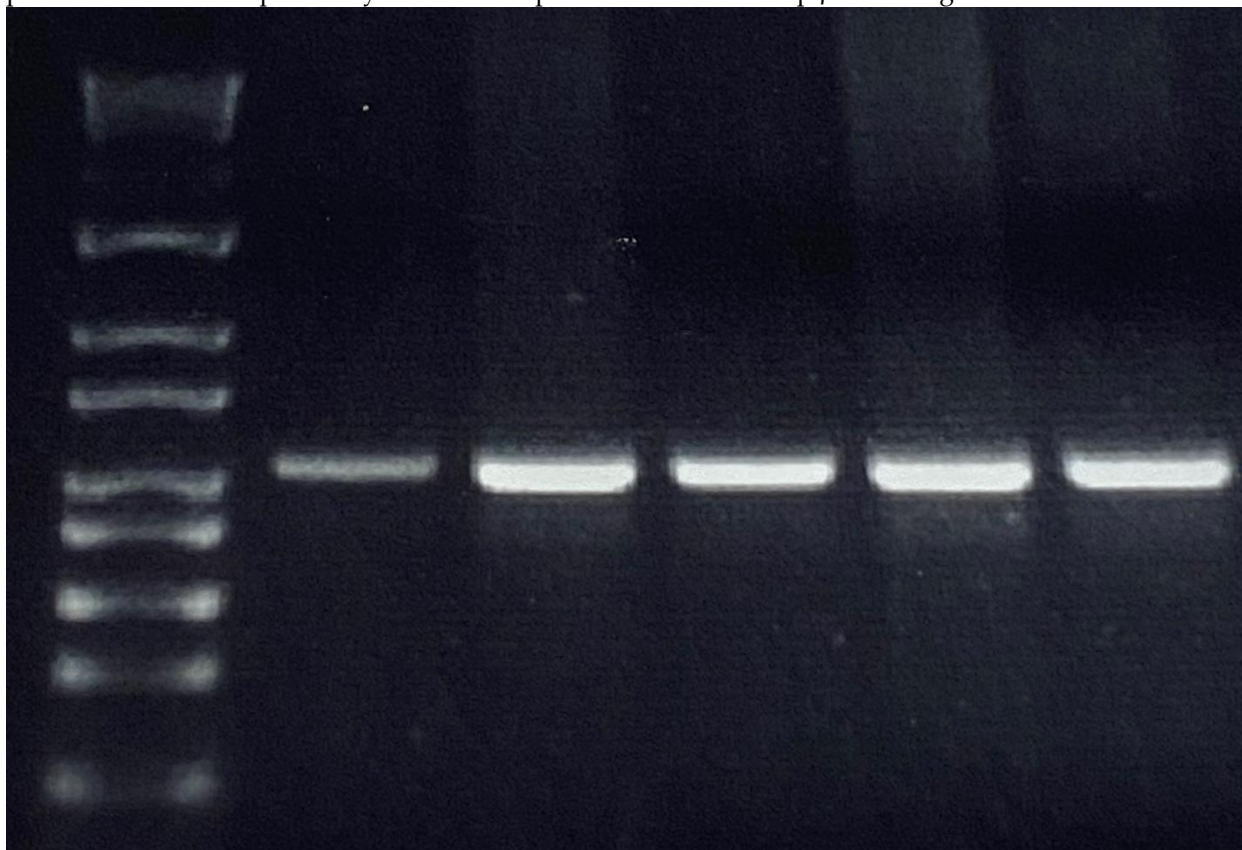


Figure S2: TaqMan-based mutation panel analysis. This representative amplification plot shows the mutation profile of a sample that was positive for the KRAS COSM553.

