

Figure S1. ZBTB20 is absent in mature striatal neurons Double-staining for ZBTB20 and NeuN in macaque striatum shows absence of double-positive cells. Scale bar: 100µm.

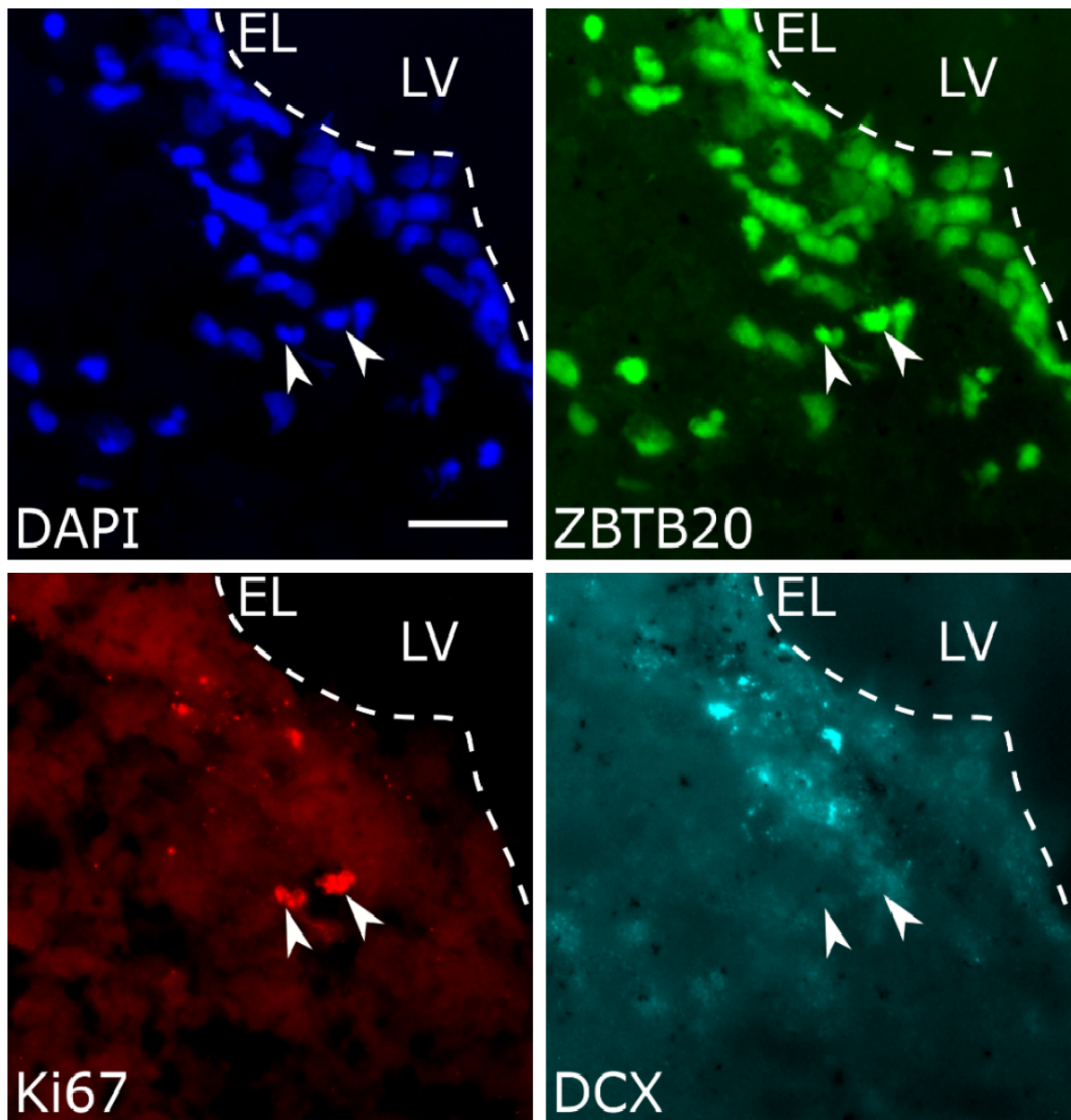


Figure S2. Combinatorial labeling of ZBTB20 with Ki67 and DCX. Triple-staining for Ki67, ZBTB20 and DCX in macaque monkey SEL shows presence of Ki67⁺/ZBTB20⁺ cells which are negative for DCX (arrowheads). EL – ependymal layer, LV – lateral ventricle. Scale bar: 20µm.