

# Supplemental Figures:

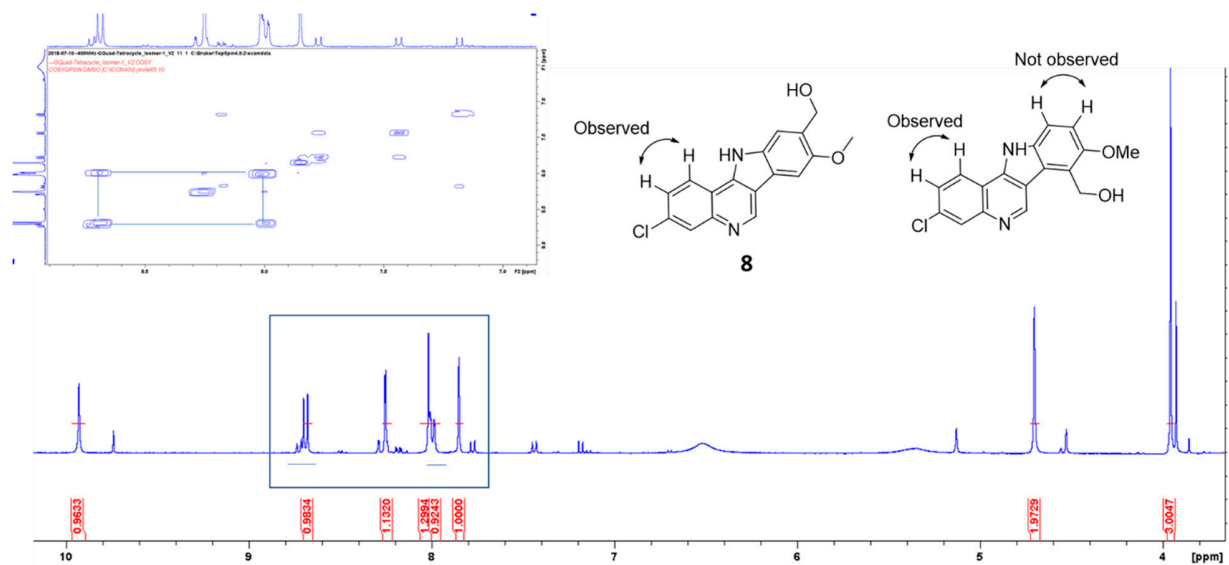
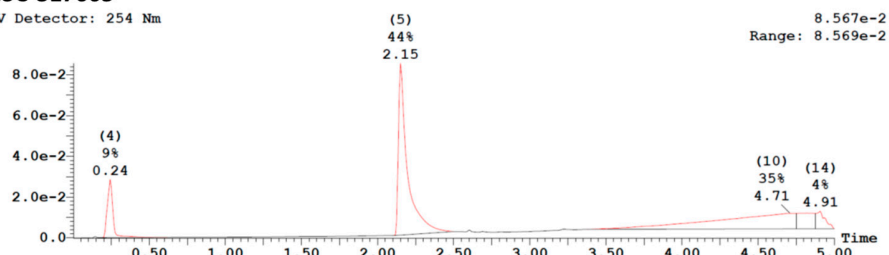


Figure S1. Verification of the structure of compound 8.

# NSC-317605

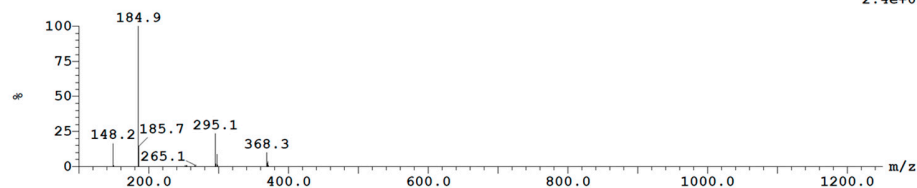
UV Detector: 254 Nm



Peak ID Compound Time Mass Found

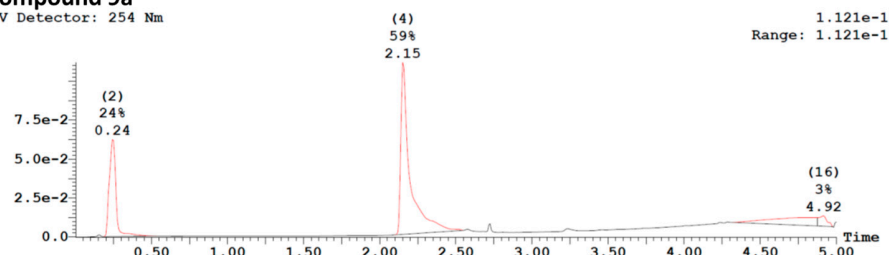
5: (Time: 2.15) Combine (446:476- (440:451+536:547))

1:MS ES+  
2.4e+007



## Compound 9a

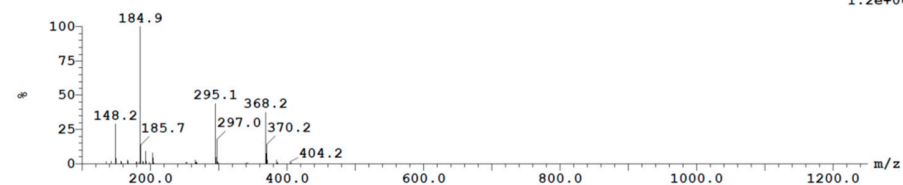
UV Detector: 254 Nm



Peak ID Compound Time Mass Found

4: (Time: 2.15) Combine (446:476- (438:449+547:558))

1:MS ES+  
1.2e+007



**Figure S2.** Confirmation of identify between compound 9a to NSC 317605. (note the peak at 0.24 is the solvent front DMF used for injection)

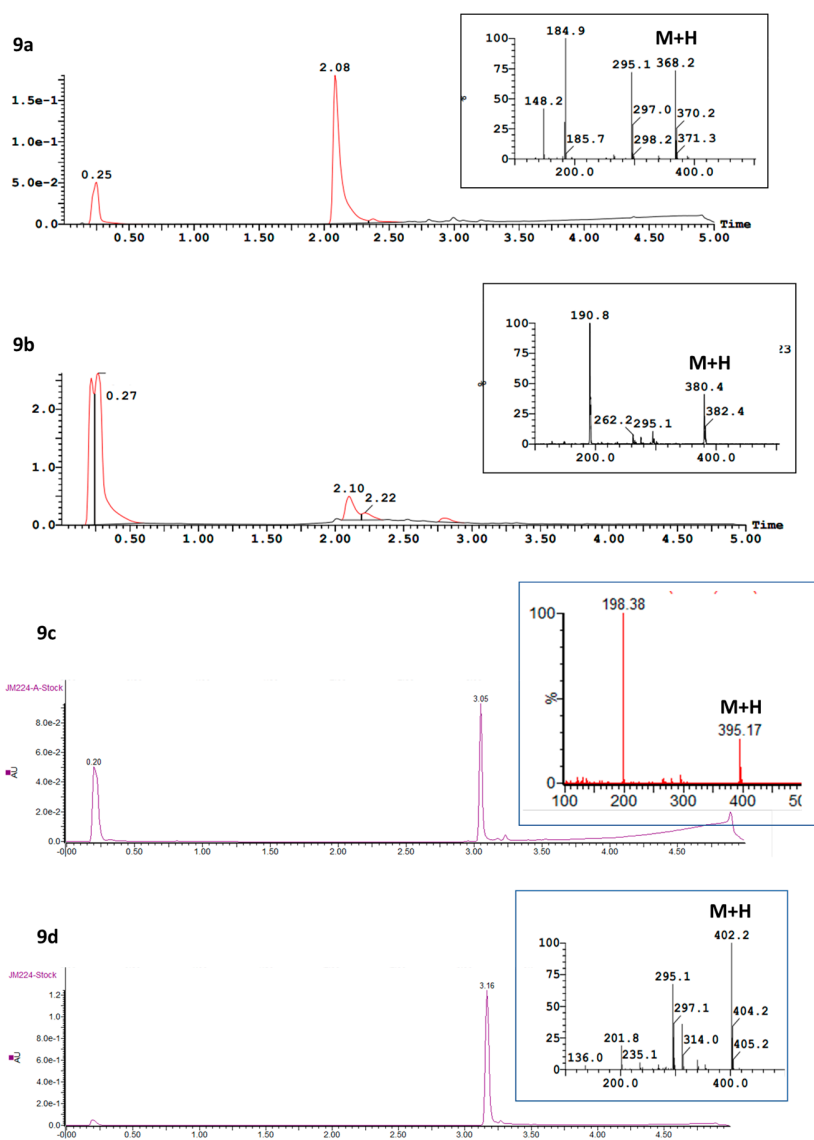
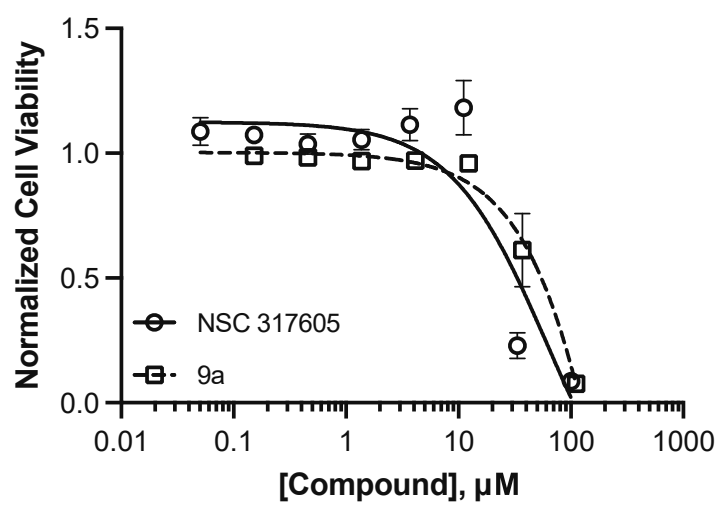


Figure S3. LCMS confirmation of purity and identity for compounds for 9a-9d.



**Figure S4.** Comparison of cytotoxicity of **9a** to NSC 317605 in AsPc-1 cells at 72 hr. A comparison of  $\text{IC}_{50}$ 's by Extra sum-of-squares F Test highlight no significant difference between the  $\text{IC}_{50}$ s.