

Supplemental File S1

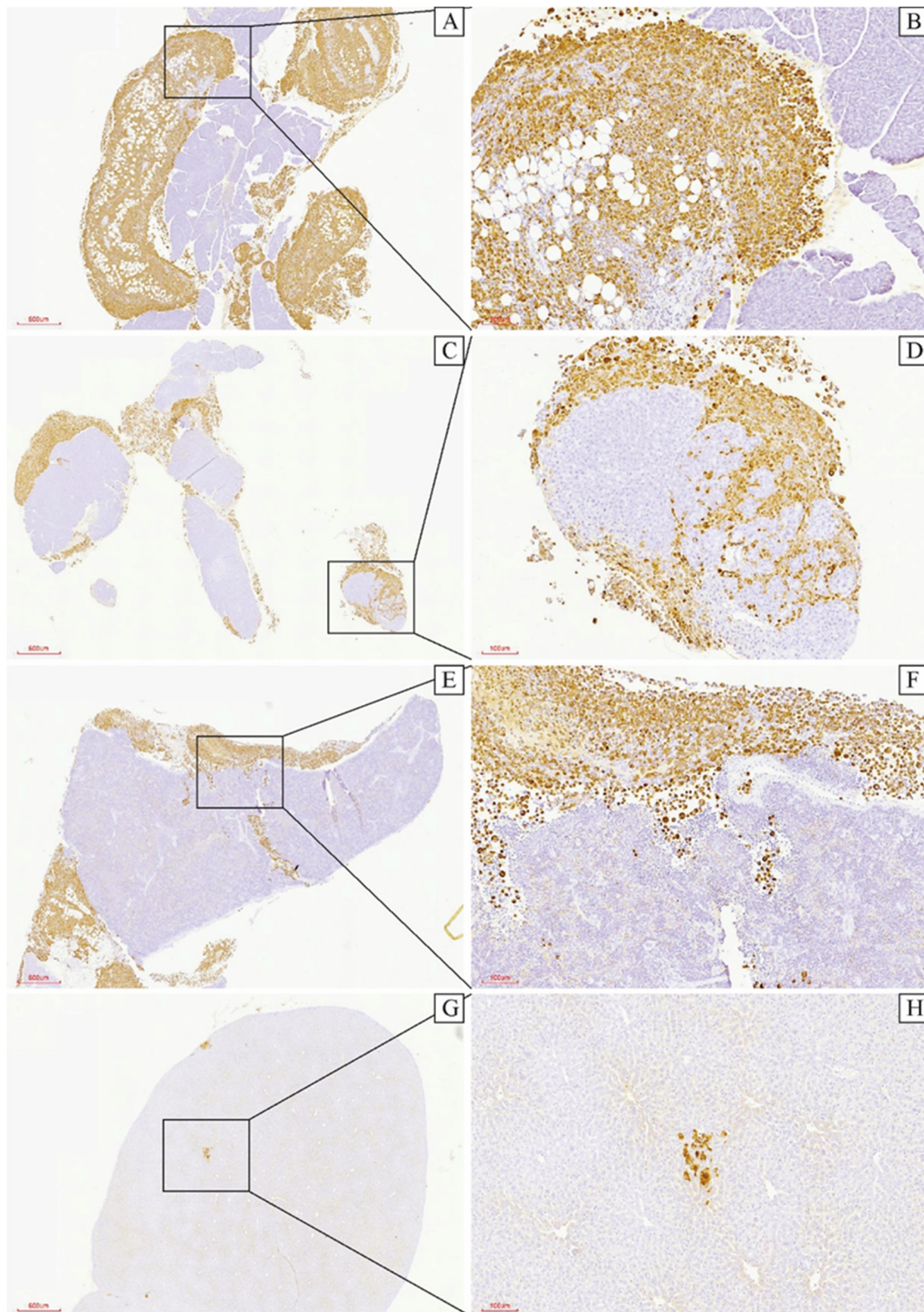


Figure S1. Vimentin stained metastatic MDA-231EV cells in (A–D) pancreas, (E,F) spleen, and (G,H) liver. Metastatic tumor cells were frequently found near the (A,B) pancreas and (E,F) spleen and (C,D) only rarely invaded the pancreas. Scale bars for A,C,E,G are 600 μ m and for B,D,F,H are 100 μ m.

Supplemental File S2

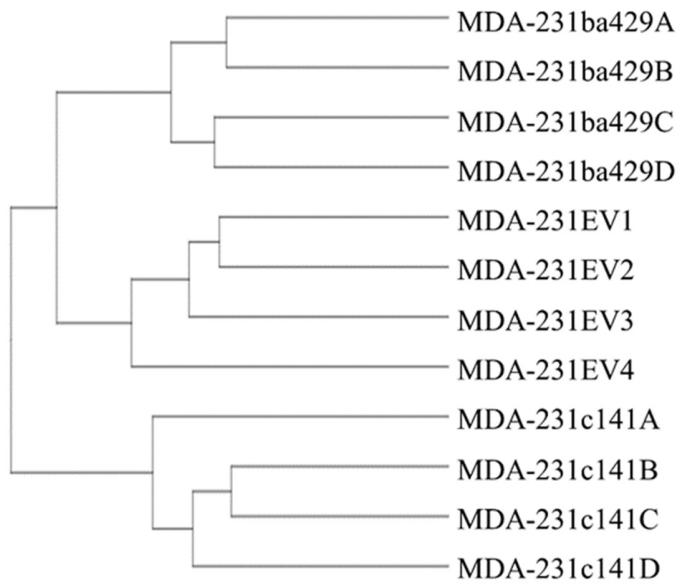


Figure S2. Hierarchical clustering of MDA-231EV, MDA-231c141 and MDA-231ba429 tumors.

Supplemental File Table S1

Table S1. Transcripts with miR-200c or miR-141 binding sites.

Transcript	miRDB	MicroT-CDS	miRwalk
<i>CPE</i>	-	-	miR-200c-5p
<i>GNG2</i>	-	-	miR-141-3p, miR-141-5p, miR-200c-5p
<i>MXRA8</i>	-	-	miR-141-5p, miR-200c-3p
<i>SELENBP1</i>	-	-	miR-141-5p, miR-200c-3p, miR-200c-5p
<i>AGR2</i>	-	-	miR-141-5p
<i>JAG1</i>	miR-141-3p	miR-141-3p	miR-141-3p, miR-141-5p, miR-200c-3p, miR-200c-5p
<i>LCP1</i>	-	-	miR-141-3p, miR-141-5p, miR-200c-3p
<i>DYSF</i>	-	-	miR-141-3p, miR-141-5p, miR-200c-3p
<i>NKD1</i>	miR-141-3p	-	miR-141-5p, miR-200c-5p
<i>CALHM2</i>	-	-	miR-200c-5p
<i>AFAP1-AS1</i>	Not found	Not found	Not found
<i>RAB9A</i>	-	miR-141-5p	miR-141-5p, miR-200c-3p
<i>EDNRA</i>	-	miR-200c-3p	miR-141-3p, miR-141-5p, miR-200c-3p, miR-200c-5p
<i>FSIP2</i>	Not found	-	miR-141-5p, miR-200c-5p
<i>SERPINF1</i>	-	-	miR-200c-3p