

Genome mining and comparative genome analysis revealed niche-specific genome expansion in antibacterial *Bacillus pumilus* strain SF-4

Sajid Iqbal ^a, John Vollmers ^b, Hussnain Ahmed Janjua ^{a*}

^aDepartment of Industrial Biotechnology, Atta-ur-Rahman School of Applied Biosciences (ASAB), National University of Sciences and Technology (NUST), H-12 Islamabad, Pakistan.

^bInstitute for Biological Interfaces 5 (IBG-5), Institute of Technology (KIT), 76344 Eggenstein-Leopoldshafen, Germany.

* Correspondence: Hussnain Ahmed Janjua; hussnain.janjua@asab.nust.edu.pk

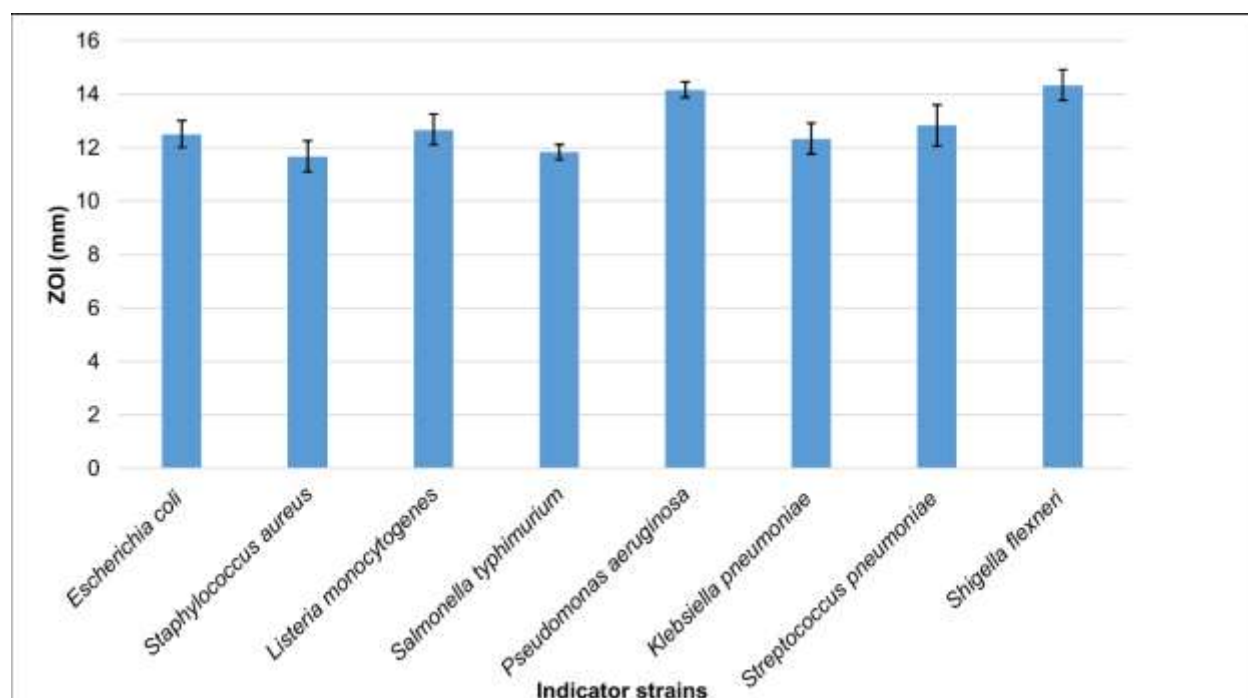


Figure S1. Antibacterial activities of *Bacillus pumilus* strain SF-4 against indicator ATCC strains. Errors bars indicate the standard deviation of triplicate experiments.