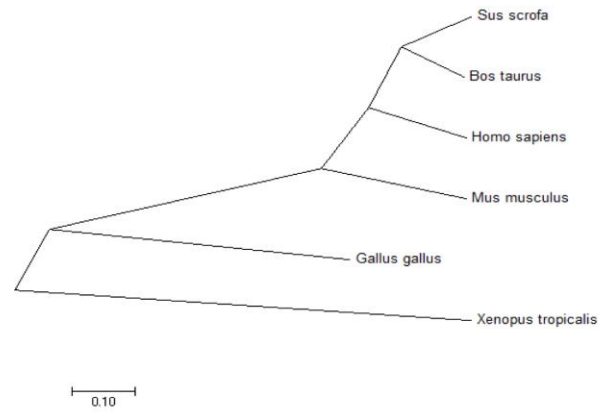
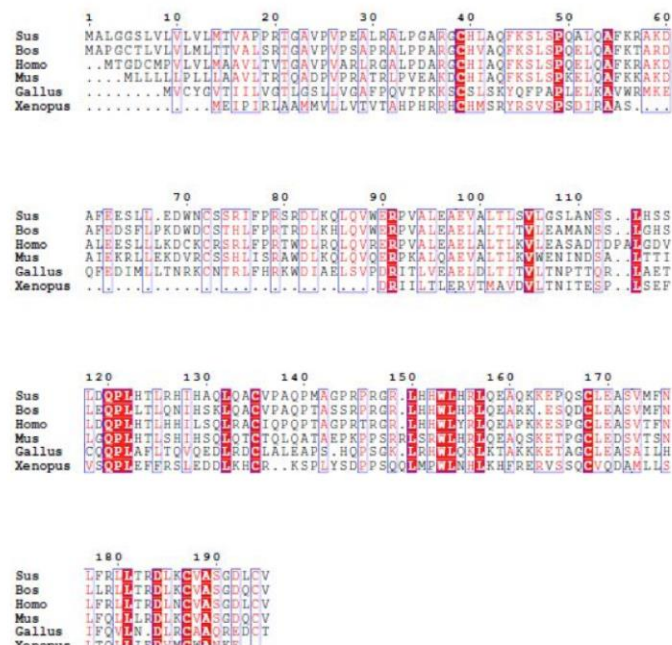


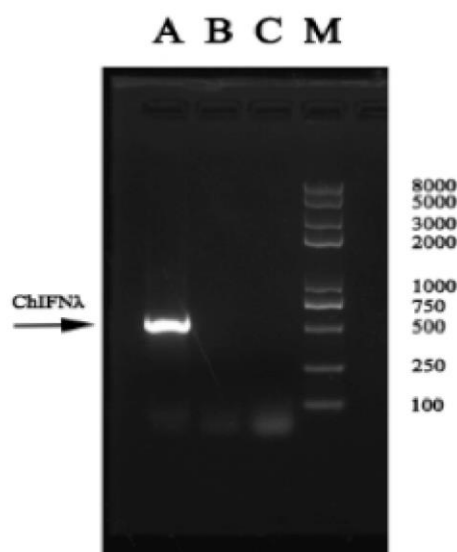
A



B

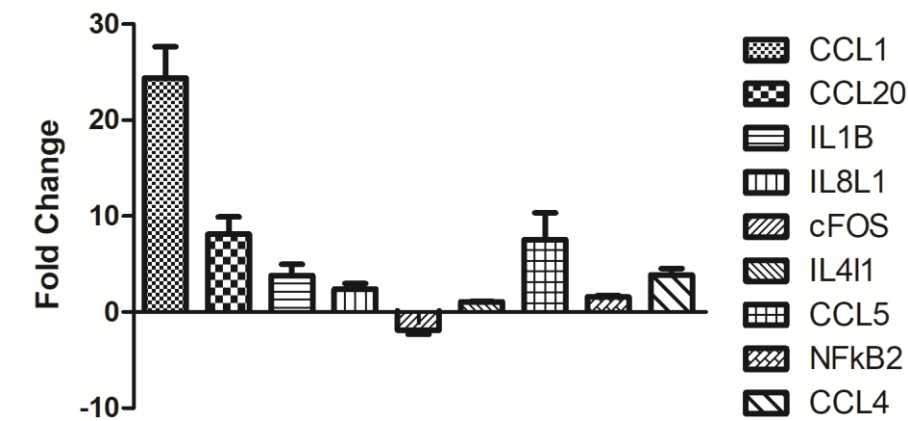


C

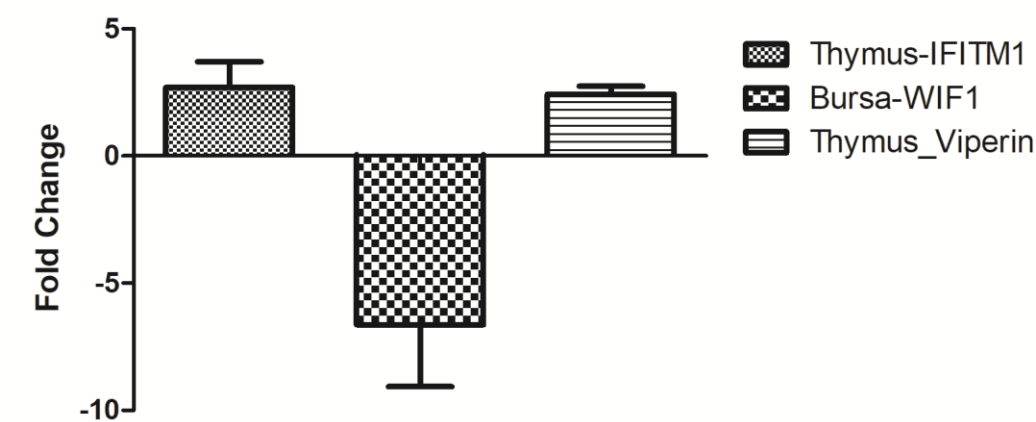


Supplementary Figure 1: A: Phylogenetic analysis representing the relationship of chIFN- λ with vertebrate IFN- λ . The tree was constructed in MEGA 7 by employing neighbor joining method (bootstrap 1000). All gene sequence were acquired from available database (NCBI). *Sus scrofa* (pig) [NP_001159962.1], *Bos taurus* (cattle) [NP_001268830.1], *Homo sapiens* (human) [AAN86127.1], *Mus musculus* (mouse), *Gallus gallus* (chicken) [XP_015144667.1], *Xenopus tropicalis* (frog) [NP_001165236.1]. **B:** Amino acid sequence of multispecies IFN- λ were aligned using ClustalW algorithm. Red color represents conserved sequences. ESPript 3.0 was employed to analyze the sequences. **C:** PCR validation of chIFN- λ gene expression. Within C section, A) Expression product chIFN- λ cDNA; B) Baculovirus control cDNA; C) Expression product mRNA; M) Marker.

A



B



Supplementary Figure 2: A: Gene expression in IFN lambda induced CEF and **B:** Gene expression in chicken tissues.