

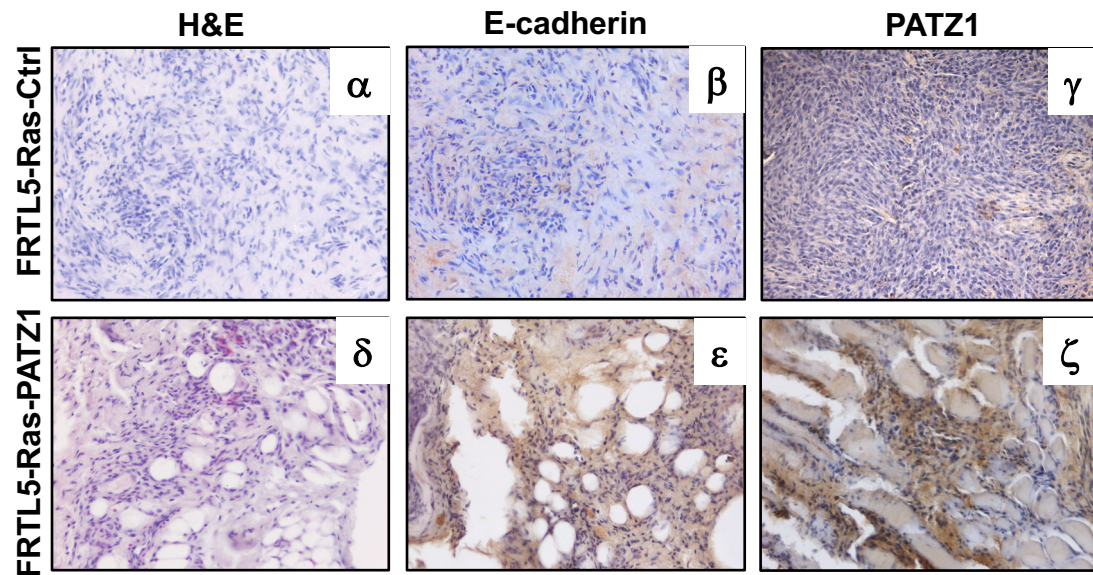
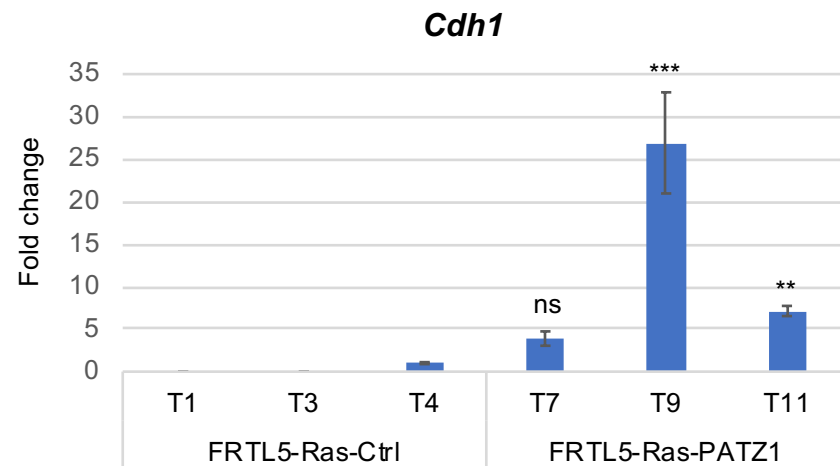
a**b**

Figure S2. Tumor xenograft phenotype. **(a)** Representative images of Hematoxylin & Eosin staining (H&E), and E-cadherin and PATZ1 immunostaining of tumor xenografts from control (α, β, γ) and PATZ1-expressing (δ, ε, ζ) FRTL5-Ras cells. Note the different architecture resembling follicular-like structures, which stain positively for both E-cadherin and PATZ1, in the FRTL5-Ras-PATZ1 specimens. Original magnification: 20x. **(b)** qRT-PCR analysis of *Cdh1* (E-cadherin) gene expression in tumor xenografts from FRTL5-Ras-Ctrl and FRTL5-Ras-PATZ1 cells. The data shown express the mean values \pm SE of three or four independent experiments. Note that in two out of three tumors from the control group (T1, T3) the *Cdh1* expression was undetectable. Statistical differences were assessed with the respect to T4 through one-way ANOVA followed by Tukey's multiple comparison test. ns, not significant; ***, $P < 0.001$; **, $P < 0.01$