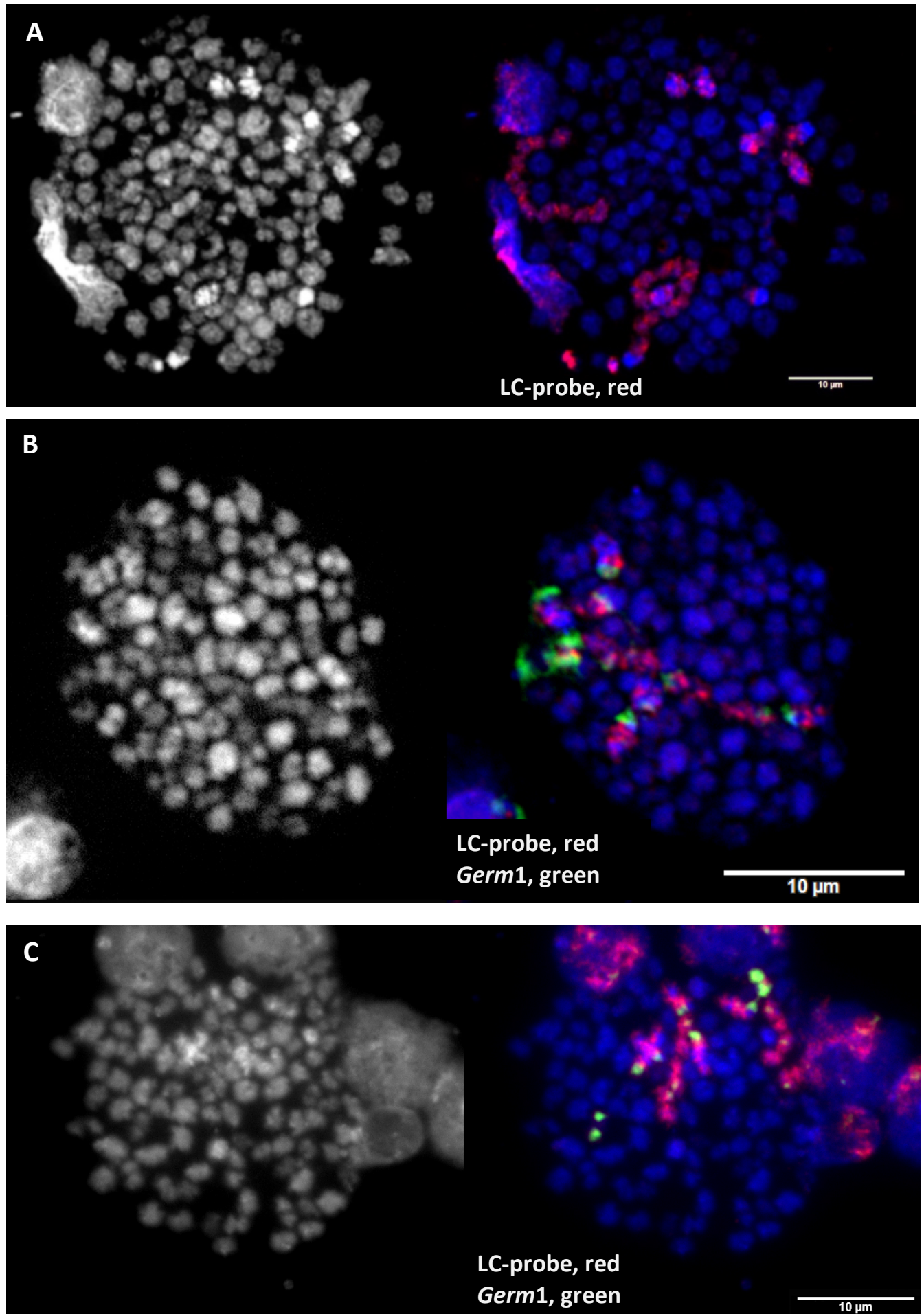
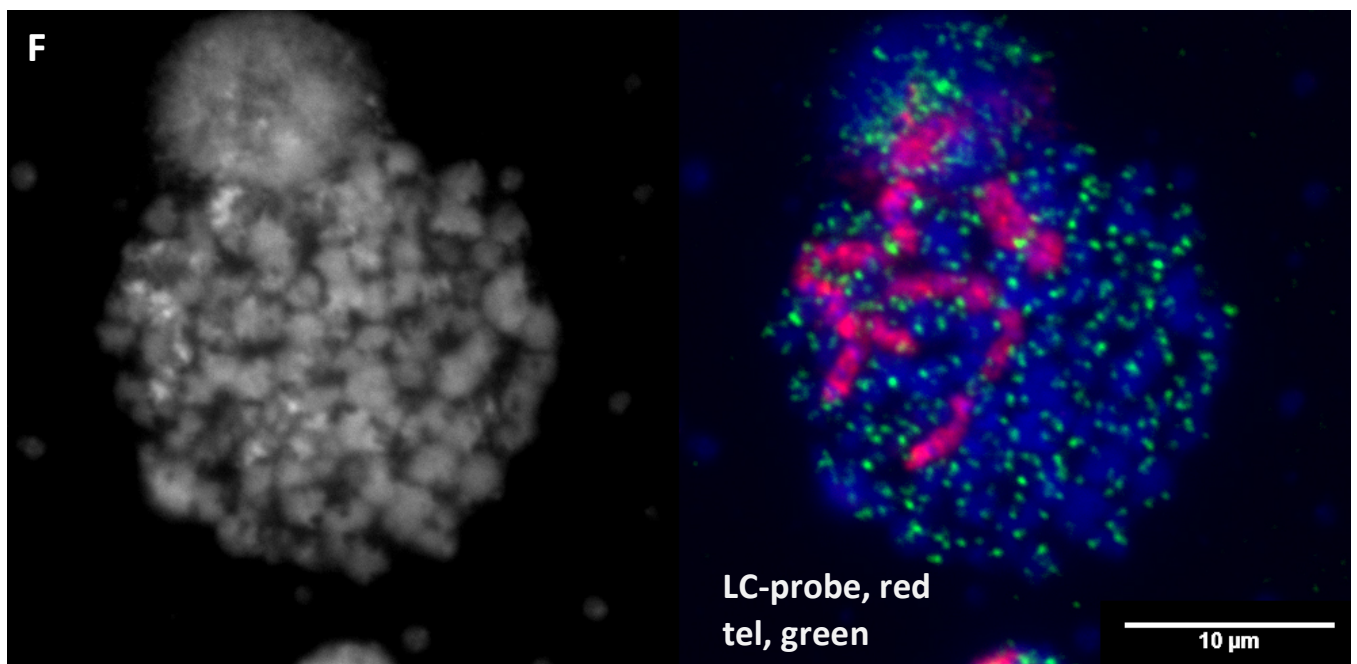
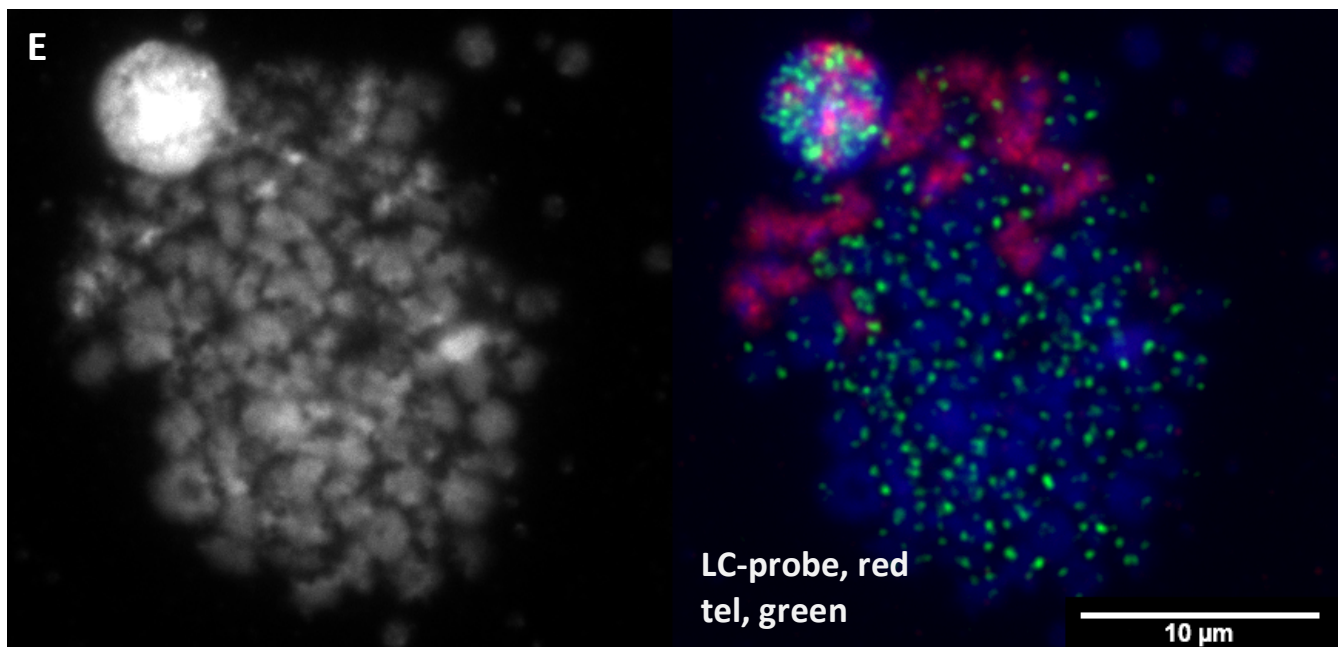
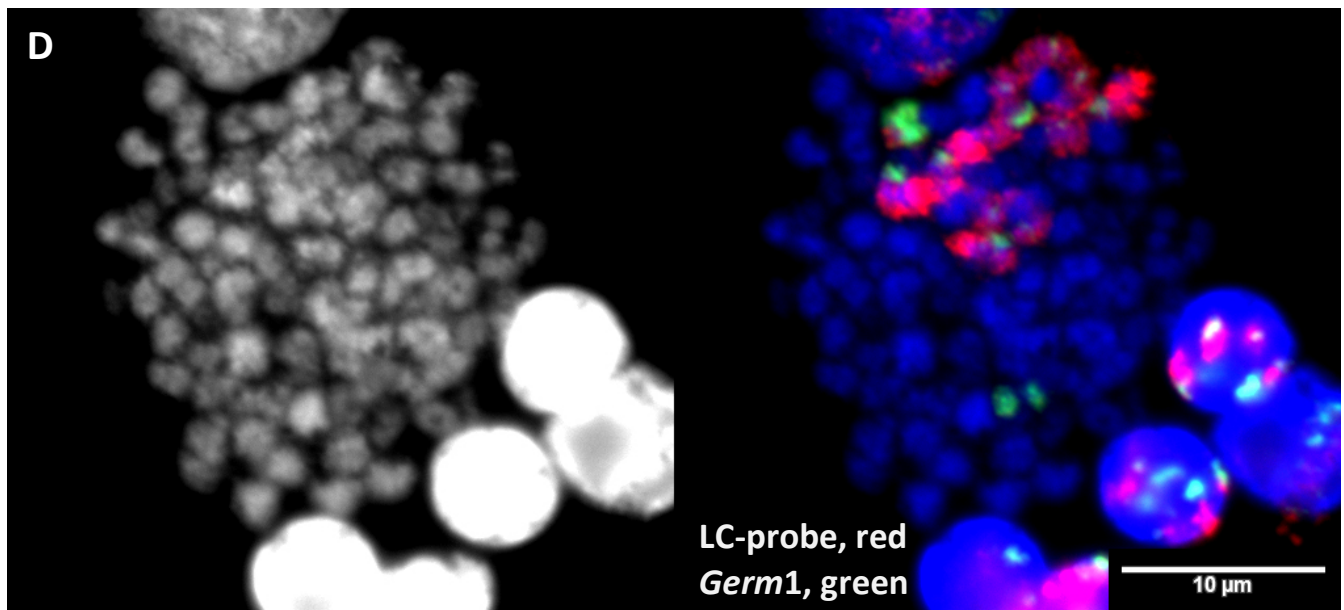
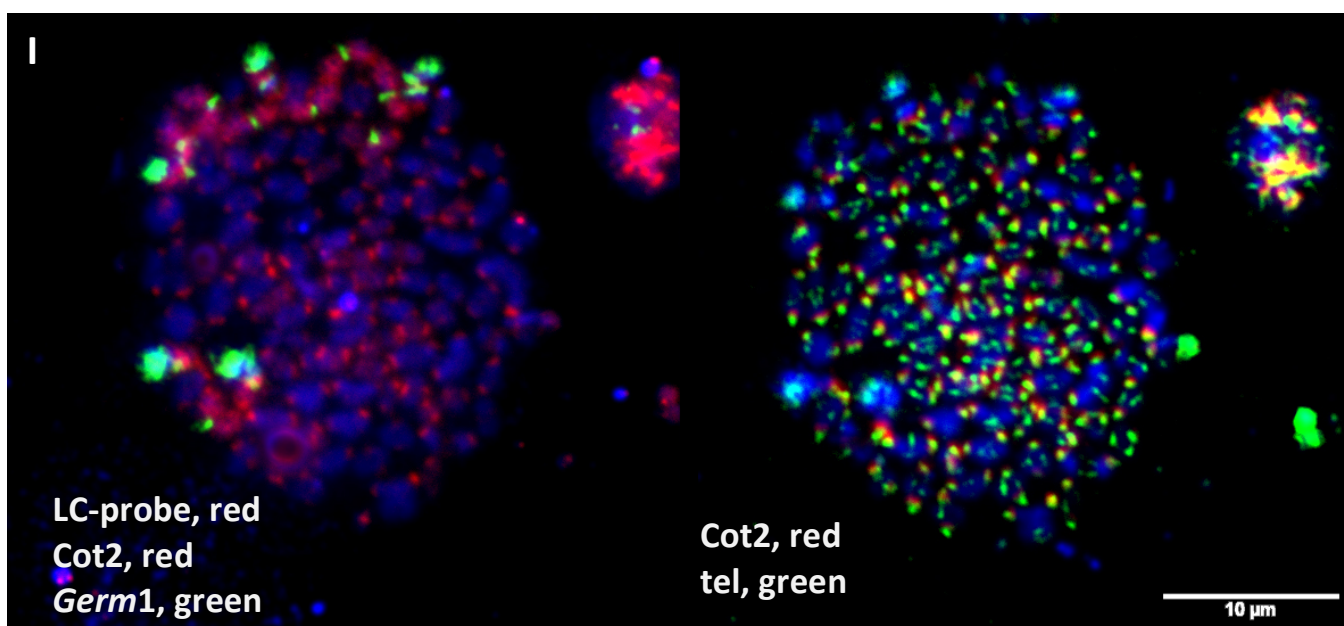
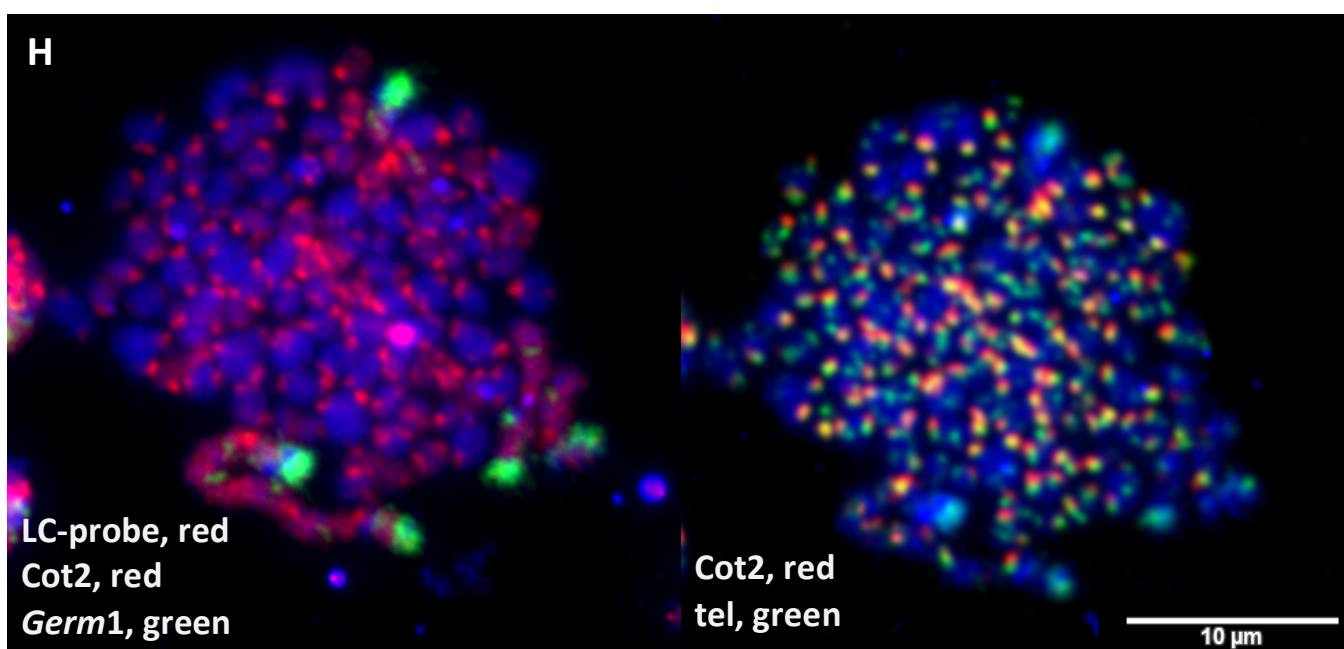
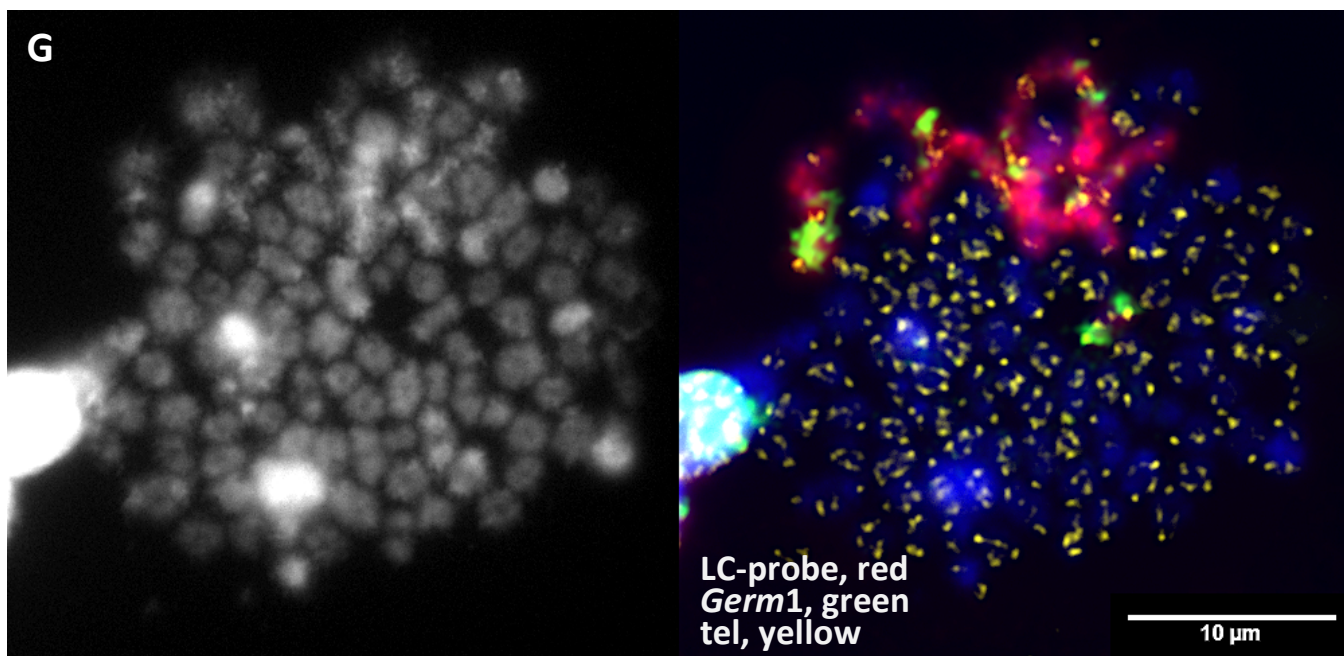
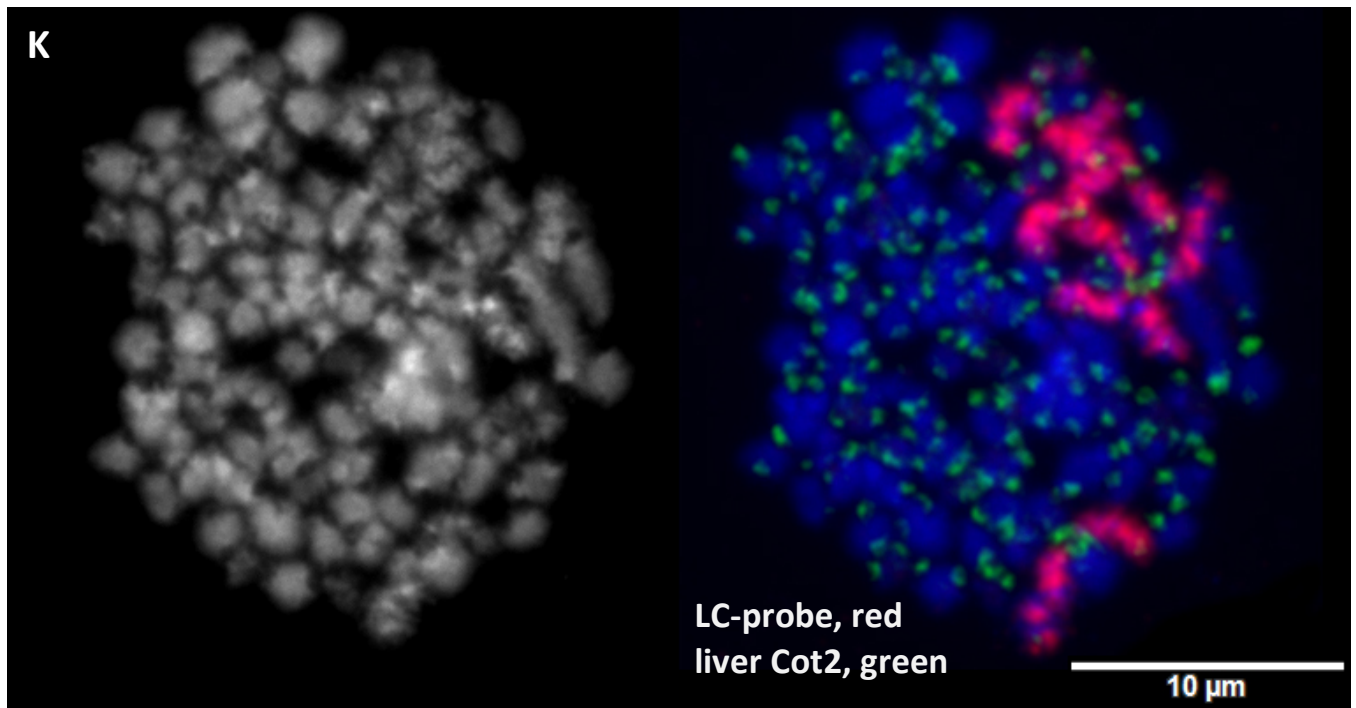
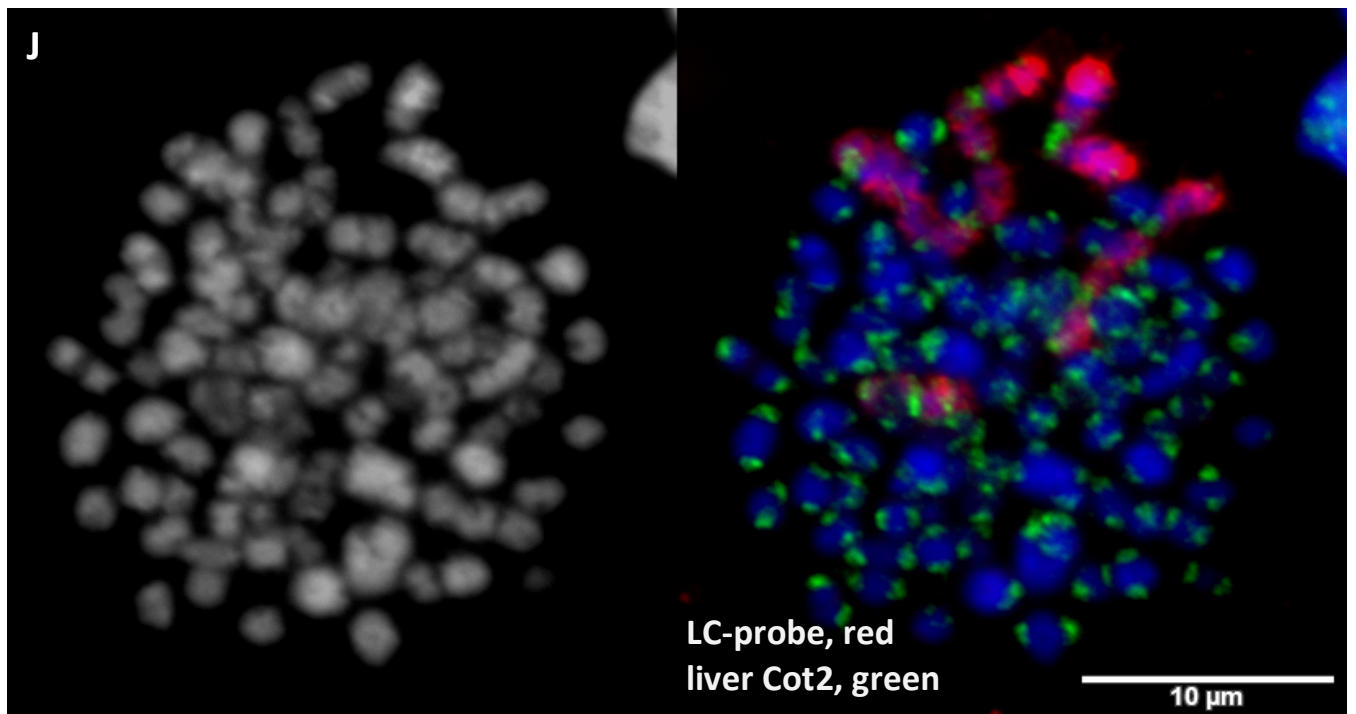


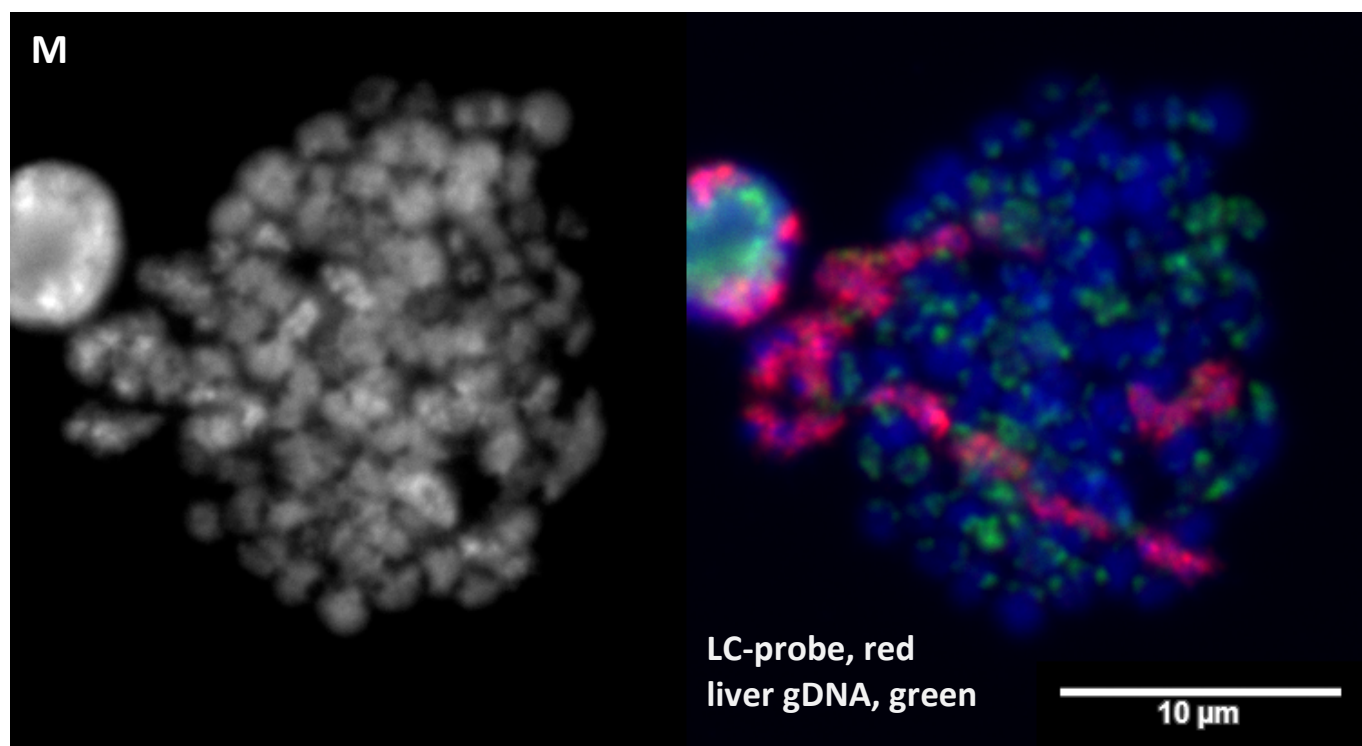
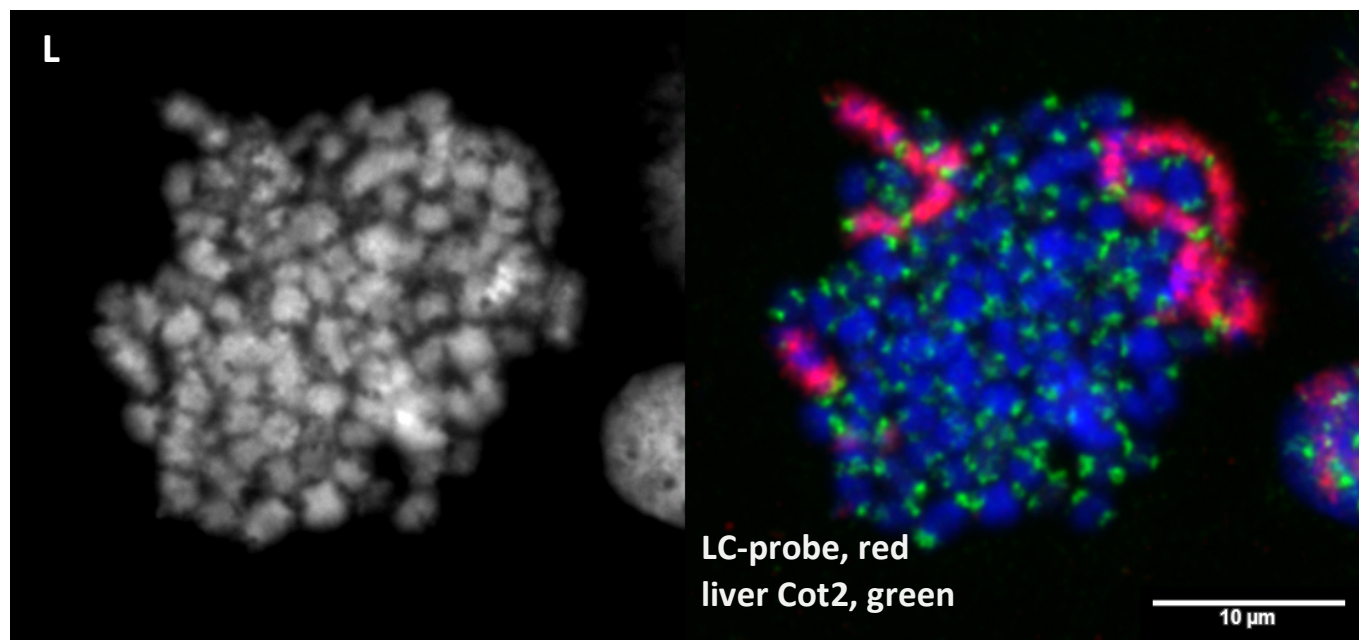
Figure S5











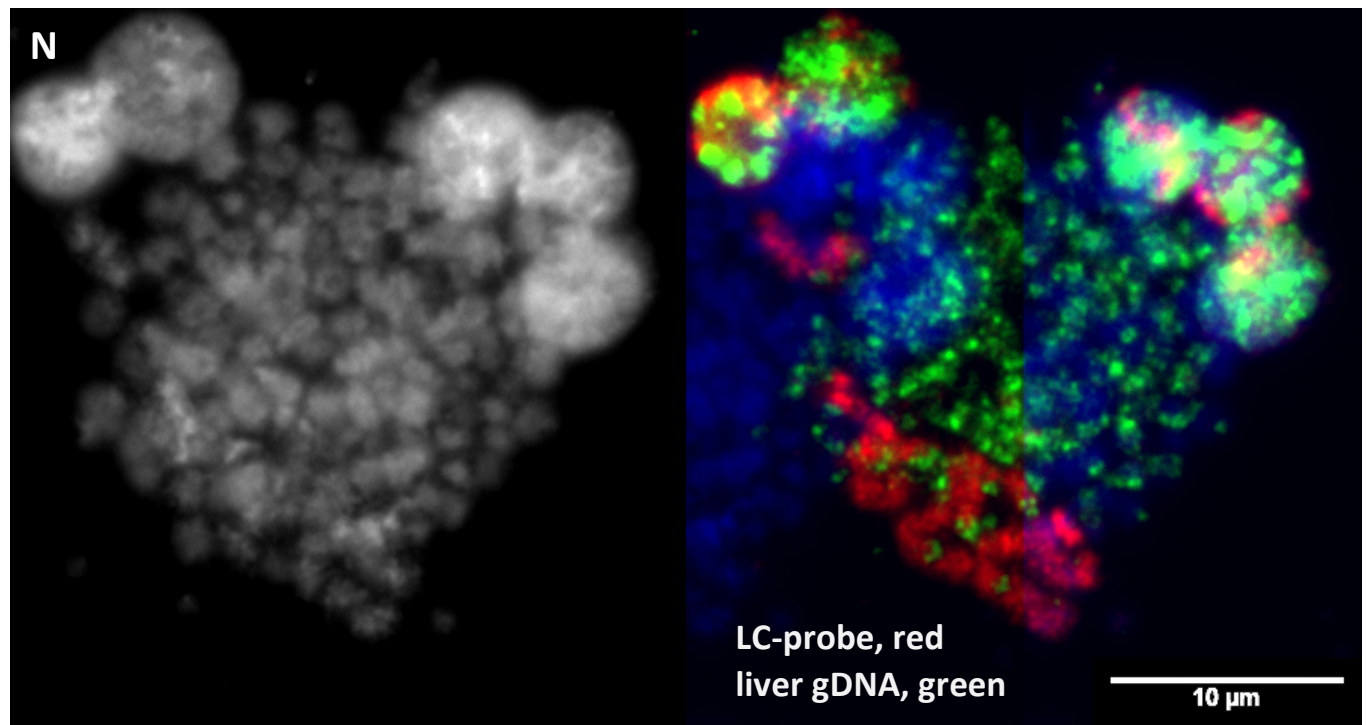


Figure S5. Meiotic chained multivalents in the sea lamprey spermatid metaphase spreads. Meiotic chains in the sea lamprey metaphase I spreads (MI) hybridized with the LC probe in combination with various other probes. (A) LC probe only (red); (B – D) LC (red) and *Germ1* (green); (E, F) LC (red), telomere PNA probe (green); (G) LC (red), *Germ1* (green), telomere PNA probe (yellow); (H, I) left: LC (red), testes C₀t2 (red), *Germ1* (green); right: testes C₀t2 (red), telomere PNA probe (green); (J-L) LC (red), liver C₀t2 (green); (M, N) LC (red), genomic liver (green).