

Supplementary Figures

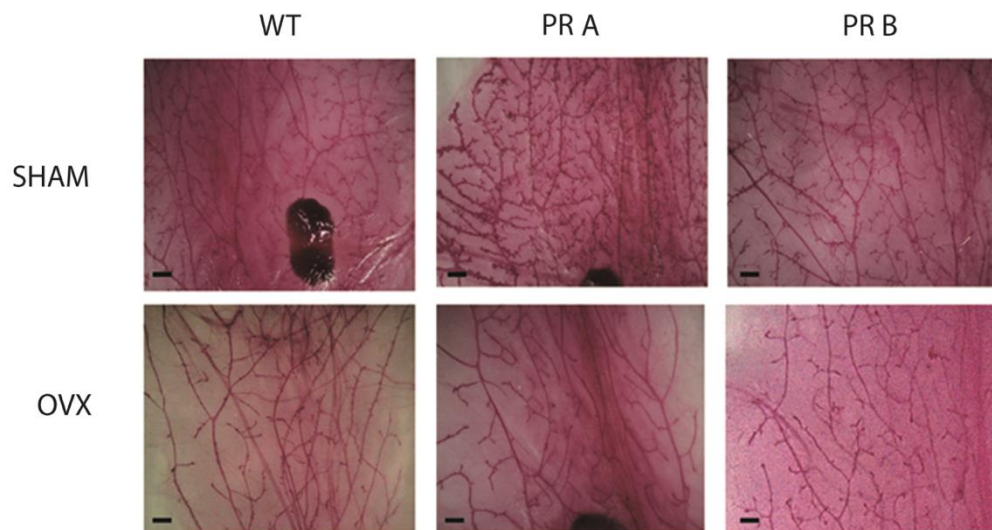


Figure S1. Impact of ovariectomy on mammary glands of WT, PRA, and PRB mice. Representative mammary gland whole mounts of sham operated and ovariectomized (OVX) 20-week-old WT, PRA, and PRB transgenic mice. Scale bar: 500 μ m.

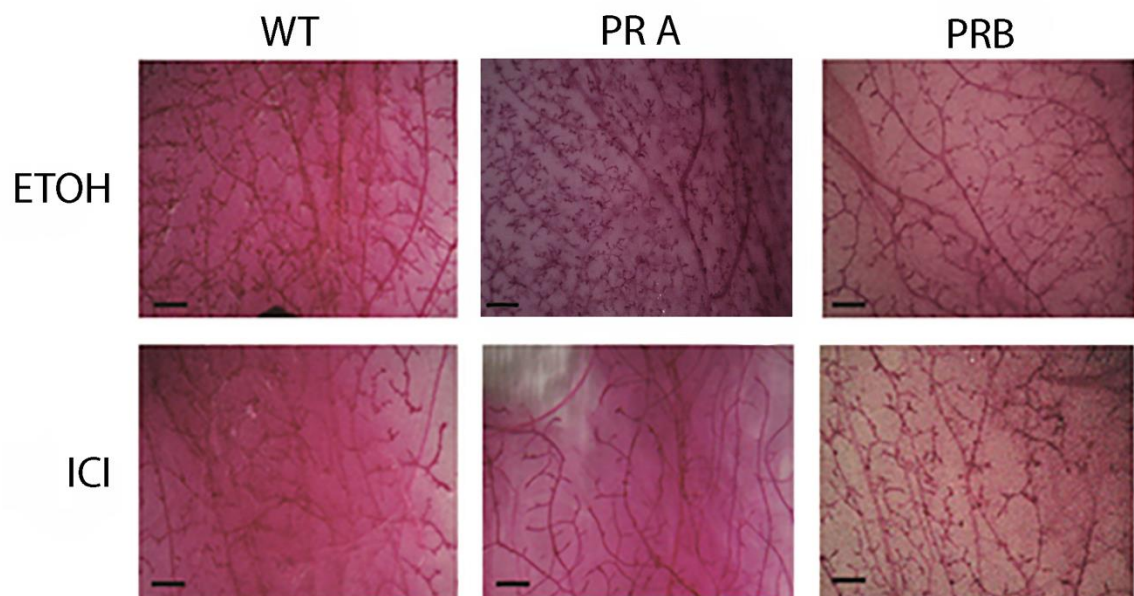


Figure S2. Impact of ICI 180, 780 treatments on mammary glands of WT, PRA, and PRB transgenic mice. Representative mammary gland whole mounts of vehicle (ETOH) and ICI 180, 780 (ICI) treated 20-week-old WT, PRA, and PRB transgenic mice. Scale bar: 500 μ m.

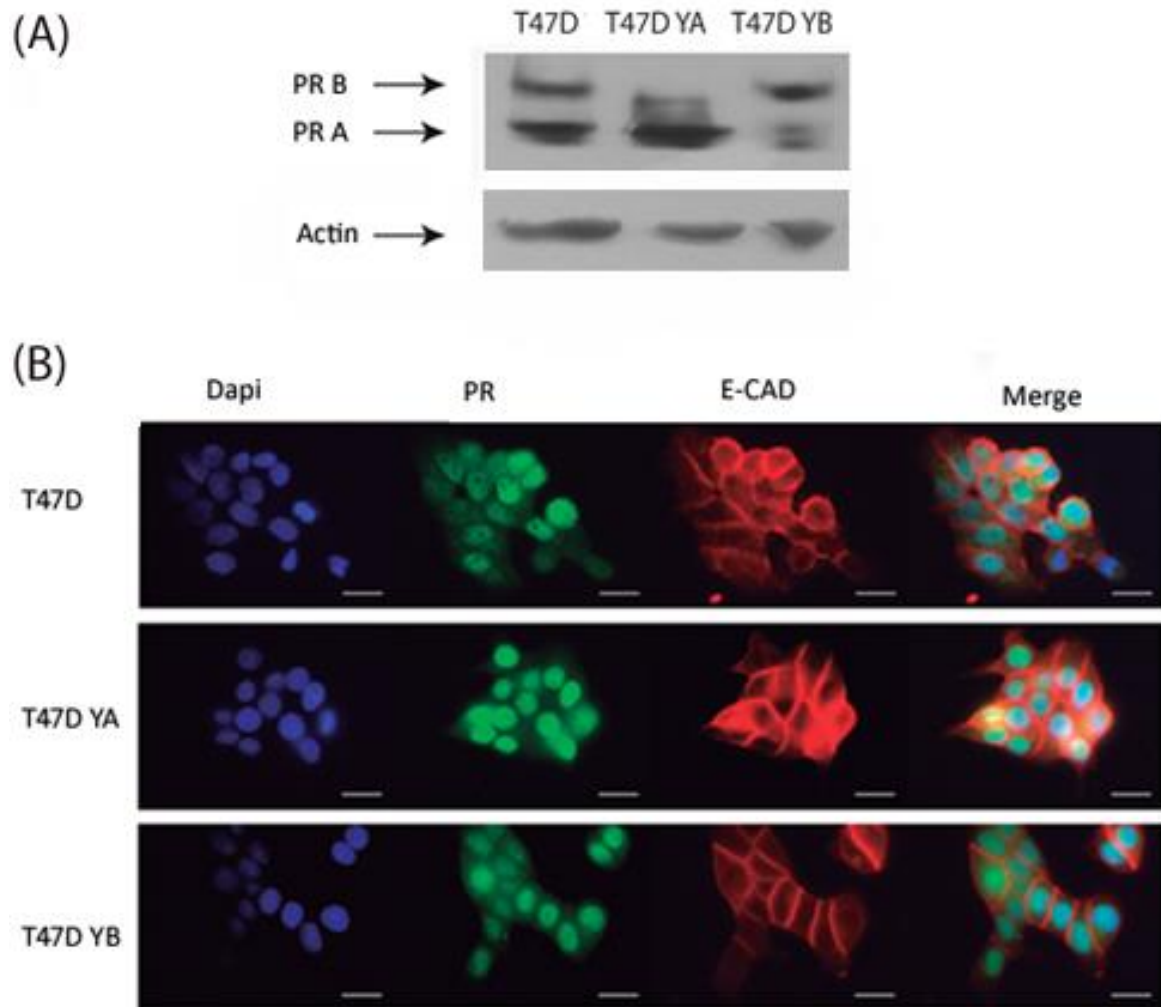


Figure S3. T47D model. (A) Western Blot of protein extracts derived from T47D, T47D YA and YB cell lines for PRA and B and ER- α . Actin was used as loading control. (B) Immunofluorescence against PR and E-Cadherin. Nuclei were stained with DAPI. Scale bar: 50 μ m.