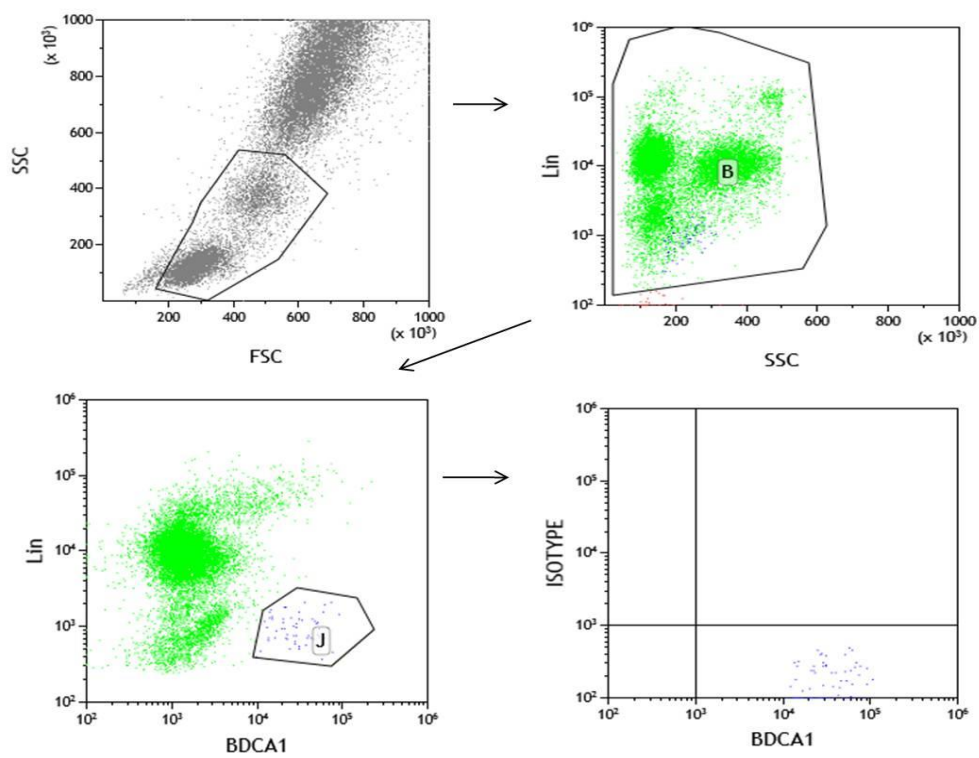
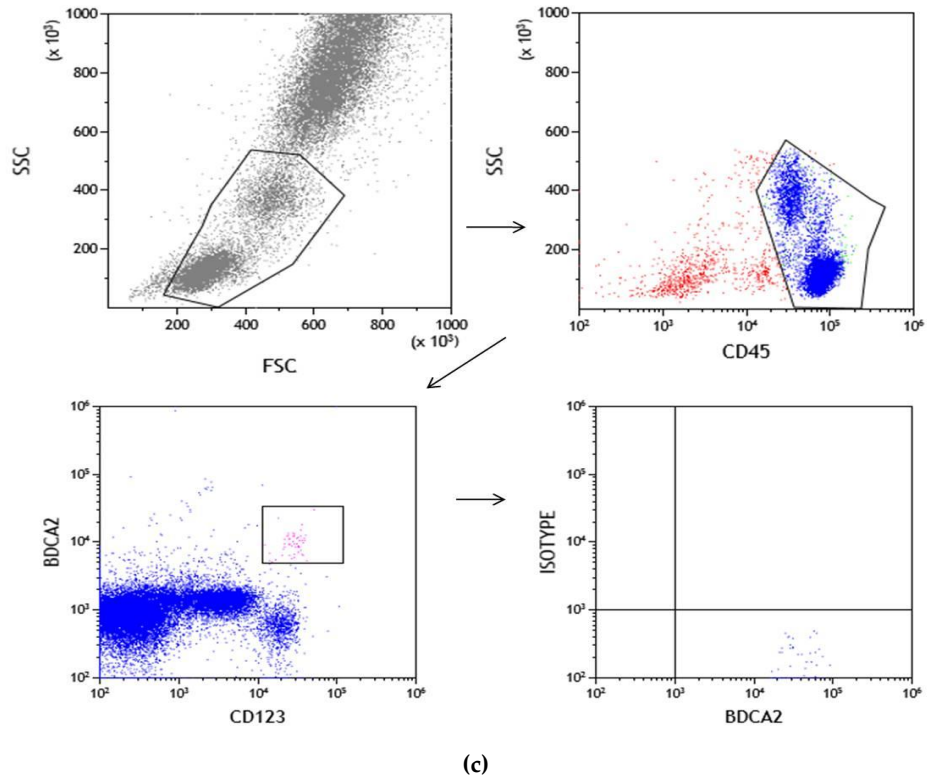


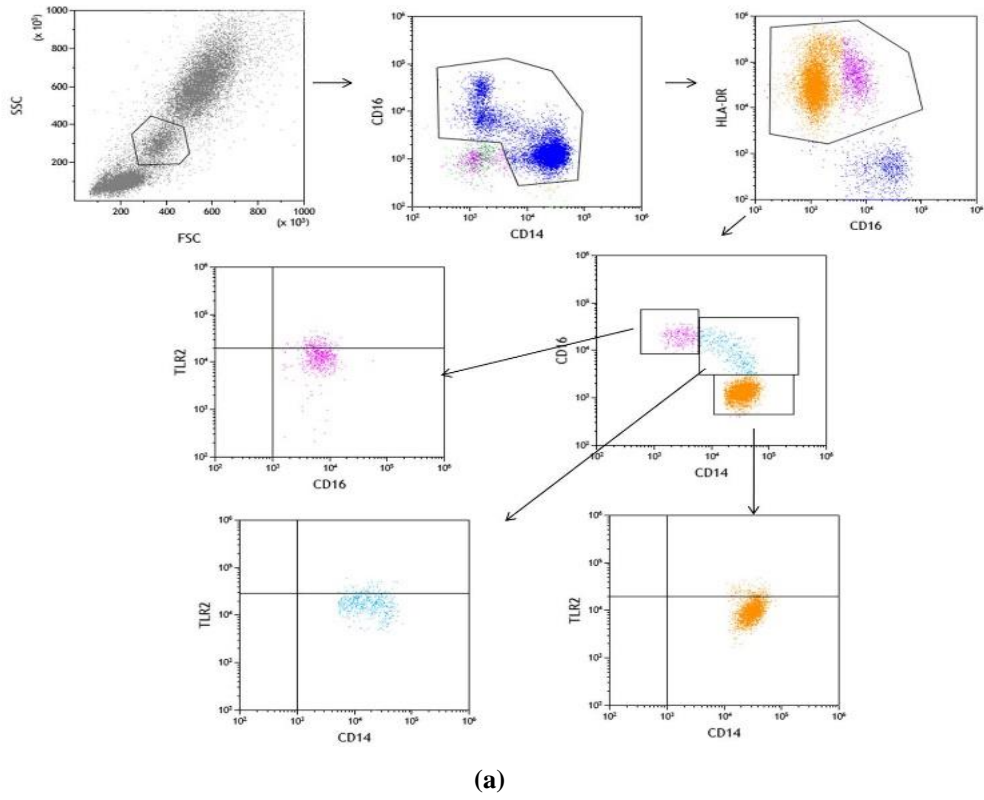
(a)

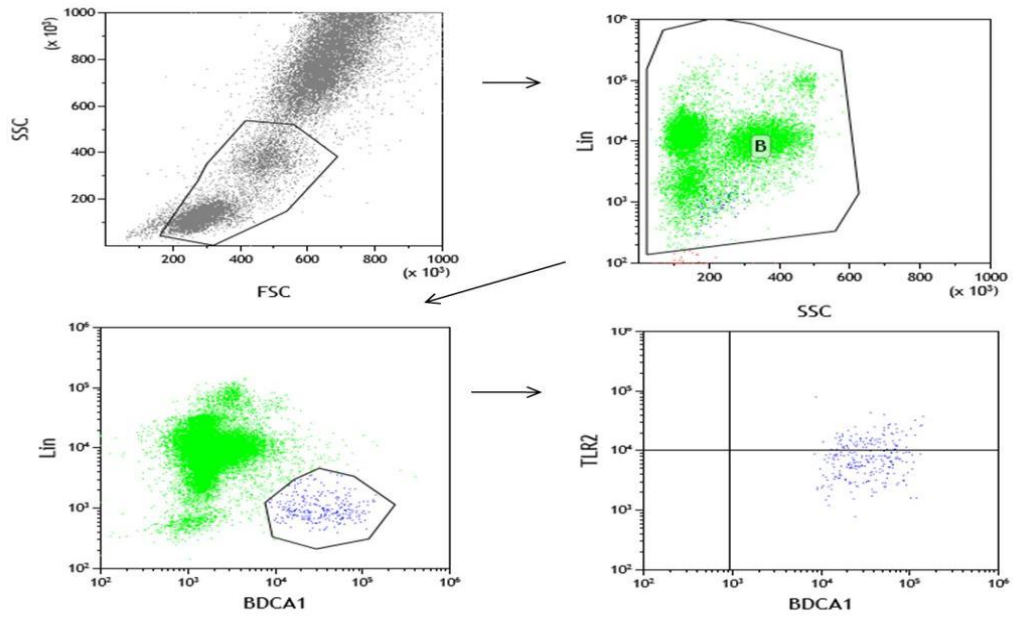


(b)

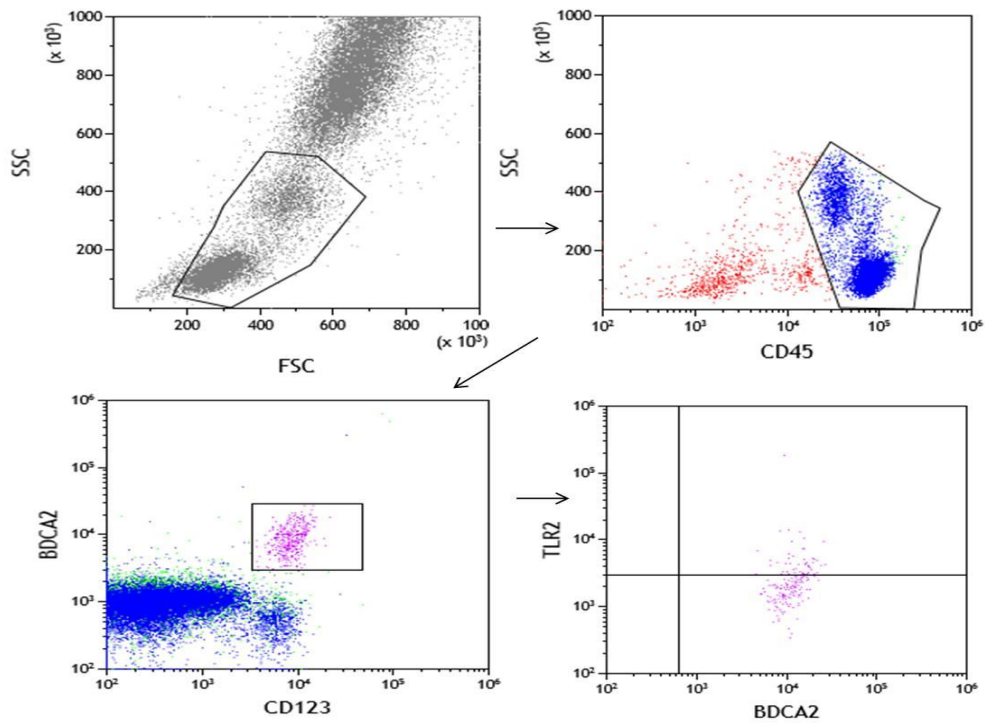


**Figure S1.** Isotype controls: (a) Sample analysis of monocytes; (b) Sample analysis of myeloid dendritic cells; (c) Sample analysis of plasmacytoid dendritic cells.



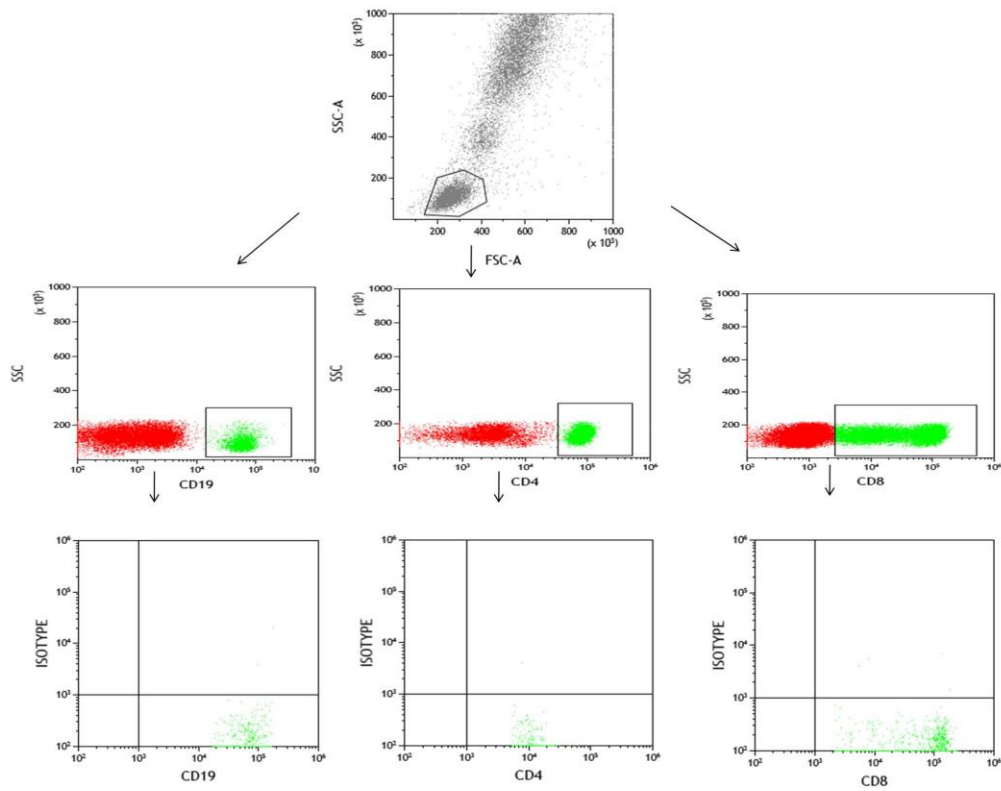


(b)

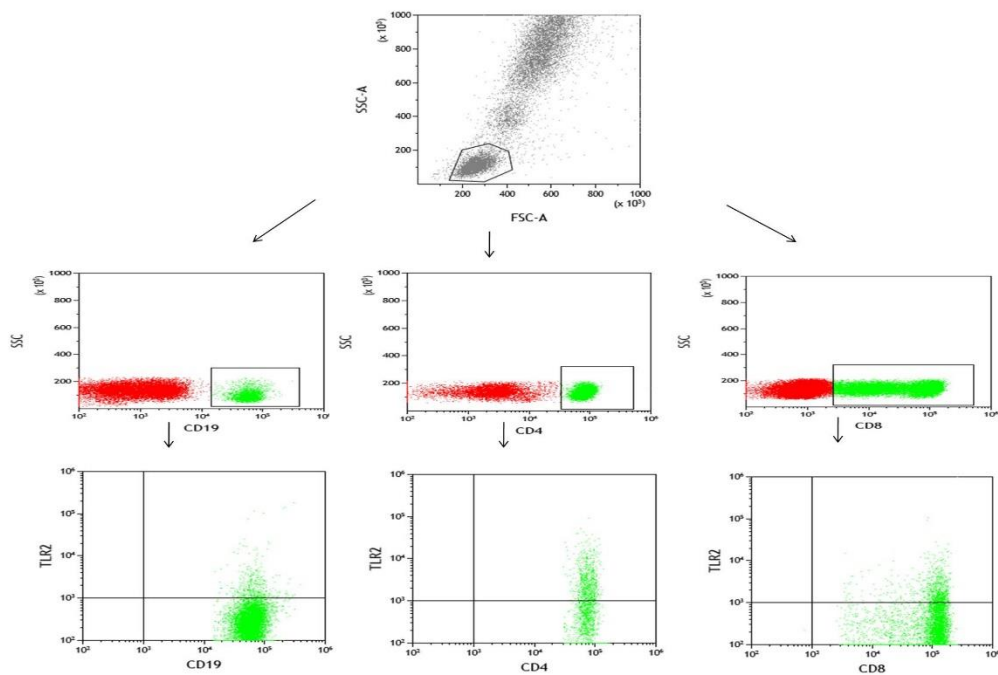


(c)

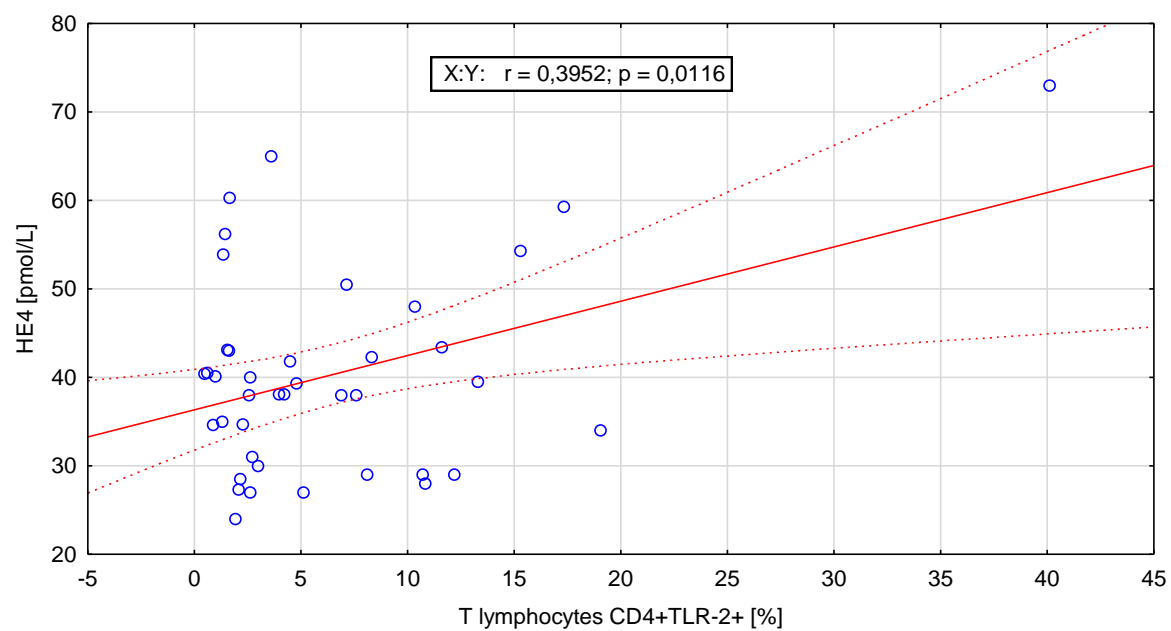
**Figure S2.** (a) Sample analysis of TLR-2+ monocytes; (b) Sample analysis of TLR-2+ myeloid dendritic cells; (c) Sample analysis of TLR-2+ plasmacytoid dendritic cells.



**Figure S3.** Sample isotype controls for B CD19+ lymphocytes, T CD4+ lymphocytes and T CD8+ lymphocytes.



**Figure S4.** Sample analysis of TLR-2+ B lymphocytes, T CD4+ lymphocytes and T CD8+ lymphocytes.



**Figure S5.** Positive correlation between the frequencies of T CD4+TLR2+ lymphocytes [%] and HE4 serum concentration ( $r=0.395$ ;  $p=0.0112$ ).