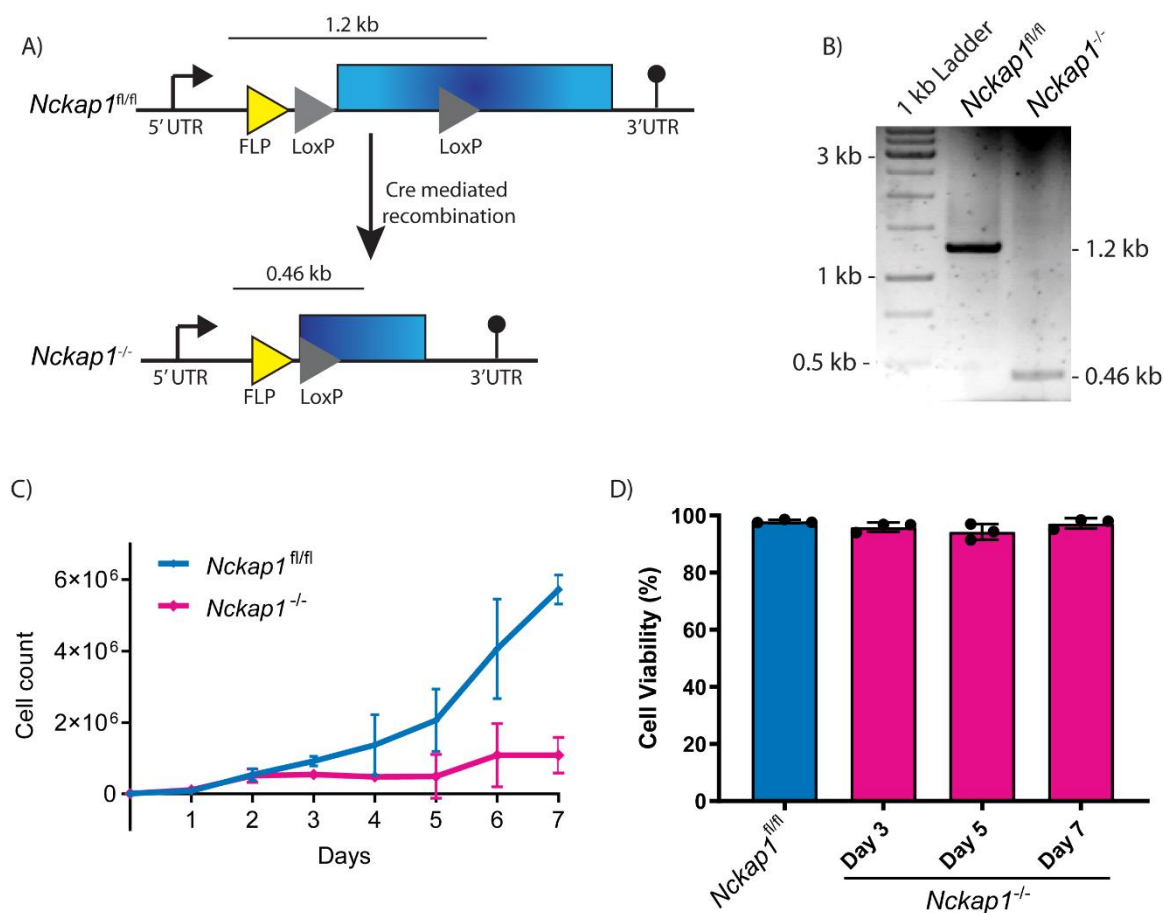
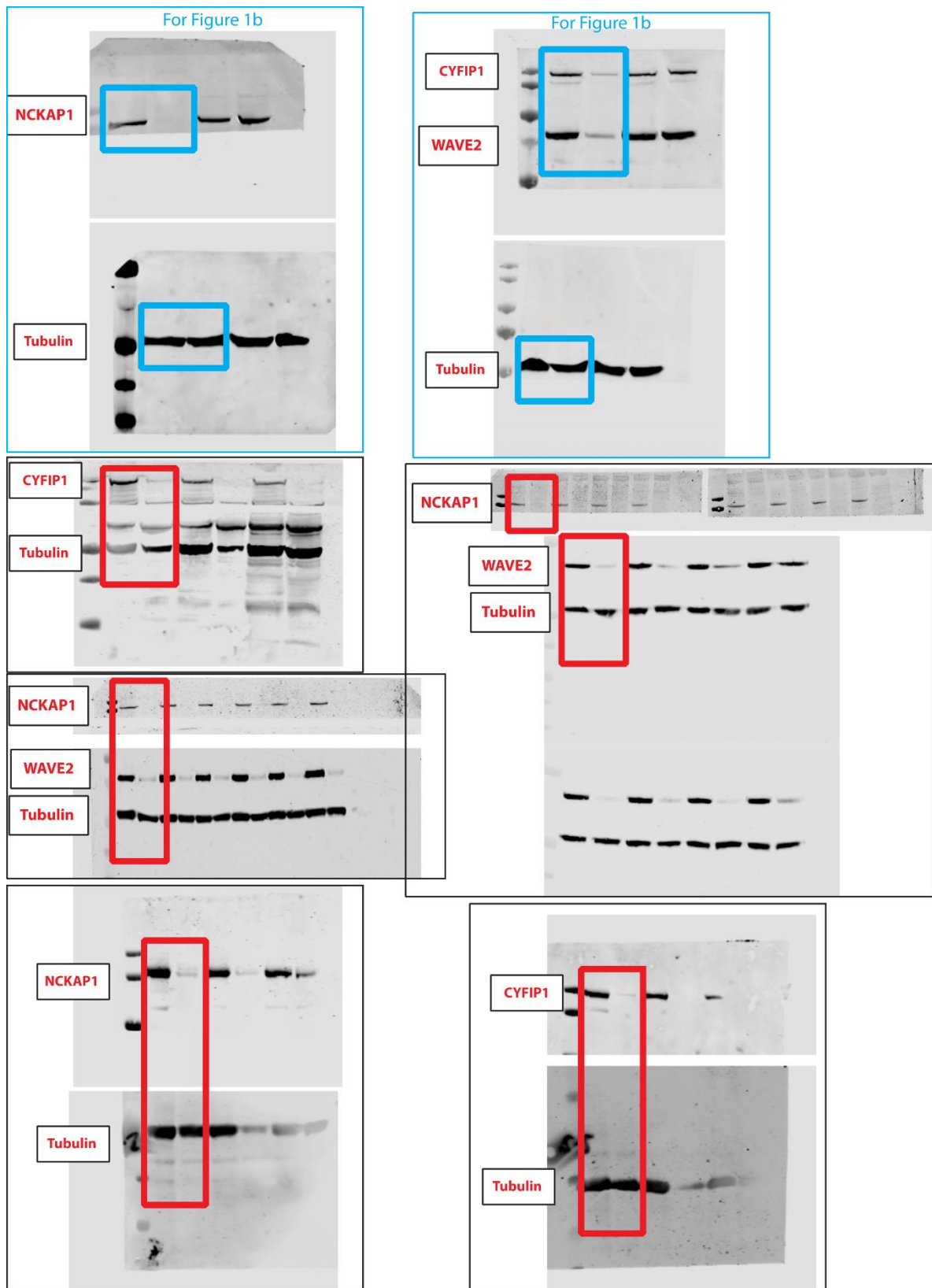


# Supplementary Materials—Figures



**Figure S1.** Inducible *Nckap1* KO MEFs, proliferation and viability. **(A)** Schematic of inducible *Nckap1<sup>fl/fl</sup>* gene in mouse embryonic fibroblasts. Upon Cre-mediated recombination the N-terminal region of *Nckap1* is deleted creating *Nckap1<sup>-/-</sup>* MEFs. **(B)** Analytical PCR after OHT treatment for 5 days. PCR product alters from a 1.2 kb to a 0.46 kb fragment, depicted in **(A)**. **(D)** Cell proliferation assay. Harvested cells counted each day and displayed as an average from 3 independent experiments. Error bars represent S.D. **(E)** Cell viability determined through trypan blue solution presented as a percentage. *Nckap1* KO cells were harvested 3, 5 and 7 days post OHT treatment and counted.  $n = 3$  independent experiments, error bars represent S.D.



**Figure S2.** Raw Western blot images. NCKAP1 was stained for on 4 blots, WAVE2 on three blots and CYFIP1 on three blots. Tubulin loading controls depicted. Blue boxes indicate the blots used for Figure 1b.