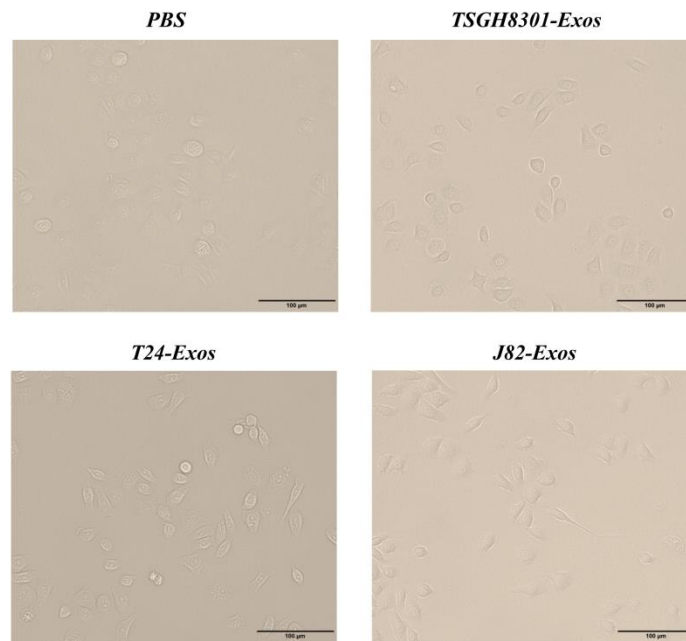
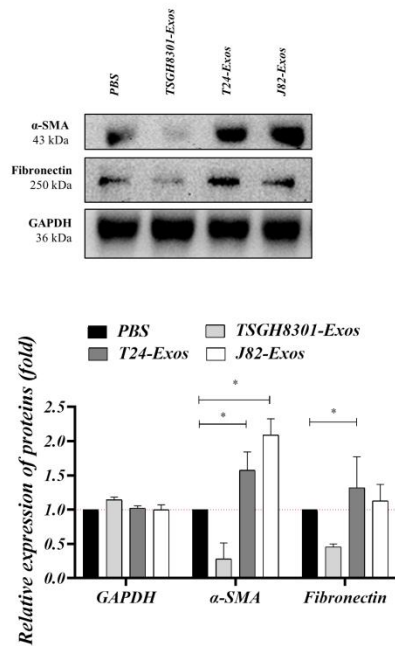
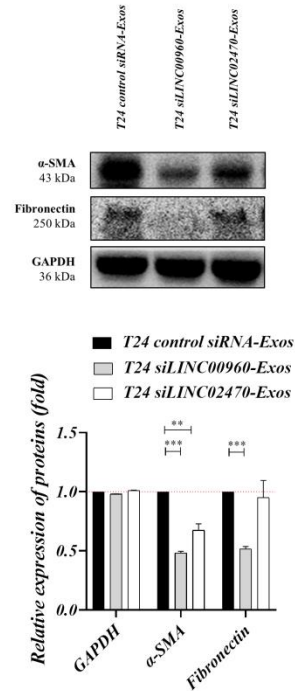


**Supplementary Table S1. Primer sequences in the study**

AATBC	Forward (5'-3')	GGCTGGGCTCCAAAGCTTGA
	Reverse (5'-3')	CTGTTGGTGTGCGGTCCCT
LINC00958	Forward (5'-3')	TGGATTCATGCTTCGCACCCC
	Reverse (5'-3')	AGATCTCAGCAGCTCCGGCT
LINC00960	Forward (5'-3')	CCTCTAAGCCTAAGCACCGCC
	Reverse (5'-3')	GGAAGCCTGGGCAAGGAATGG
SNHG18	Forward (5'-3')	CCCCACCTCACAGCCAAGTT
	Reverse (5'-3')	TGCGAGTCAGCGCATCTTCT
MIR4697HG	Forward (5'-3')	CCACGGTCTCTGCACAAGGG
	Reverse (5'-3')	TGCATGTGGCCAGAAGTCGG
MEG3	Forward (5'-3')	CTGAGGCCTAGGGGAGCTGT
	Reverse (5'-3')	AGCCCTGTGCTTTGGAACCG
TRMU	Forward (5'-3')	GGGGTCTGTACTGCCGACAA
	Reverse (5'-3')	GCATCCTGGGAAACCTGGCATT
IGFL2-AS1	Forward (5'-3')	GCCCCAAGGGGCTCATTACACA
	Reverse (5'-3')	TGTGTAAGTAACACGTCCTGGGT
LINC01451	Forward (5'-3')	TGAGCTGTGCATCCCGTGTG
	Reverse (5'-3')	CGCCACAGTCCGTGTGTGAT
GLIDR	Forward (5'-3')	CGAATCCACCCATTGCCCGT
	Reverse (5'-3')	GAGGCGTCTCTTCCGTGCAG
LOC728673	Forward (5'-3')	TGACGGGCGAGGGTTACTGT
	Reverse (5'-3')	CCGCTCAGGCTCAAGAGCAA
LINC01637	Forward (5'-3')	ACCCTGAAAACGGGCTCGGA
	Reverse (5'-3')	GCGATGCGGGGACATGAGTA
LINC01291	Forward (5'-3')	GTGACCAGCAGCATGTGTTTCCA
	Reverse (5'-3')	CAGGACTCACTGGCAATTCACCT
LINC02470	Forward (5'-3')	CAGCAGACCAACACGCCAGA
	Reverse (5'-3')	GCTCCATCTGCCCACATCCA
XIST	Forward (5'-3')	TGGCCAACAGGTGGCAGAAG
	Reverse (5'-3')	CCCCAGCATTAGCCAAGGGG
KLF3-AS1	Forward (5'-3')	GATGAGCACACACGTACGGA
	Reverse (5'-3')	TCCACGCACTCATTACGCCA
SSTR5-AS1	Forward (5'-3')	GTGCTGCTGCCCTCGTCTAC
	Reverse (5'-3')	CCTGTGCCTGGACTTCGCTC
GAPDH	Forward (5'-3')	CCTGCCGGTGACTAACCCTG
	Reverse (5'-3')	TCCACCACTGACACGTTGGC



**Supplementary Figure S1.** The morphology of the low-grade cells gradually changes into spindle-shaped mesenchymal-like after treatment of high-grade bladder cancer cells conditioned media.

**A****B**

**Supplementary Figure S2.** (A) Exosomes mediated the expression of EMT effectors:  $\alpha$ -SMA and Fibronectin were compared after treatment with exosomes. (B) Exosomes derived from LINC00960-knockdown or LINC02470-knockdown T24 cell reduced the expression levels of EMT effectors,  $\alpha$ -SMA and Fibronectin, in recipient TSGH-8301 cells when compared after treatment with each exosome. The bar-charts showed the mean and SD of triplicate experiments, \*  $p < 0.05$ , \*\*  $p < 0.01$ , \*\*\*  $p < 0.001$ .