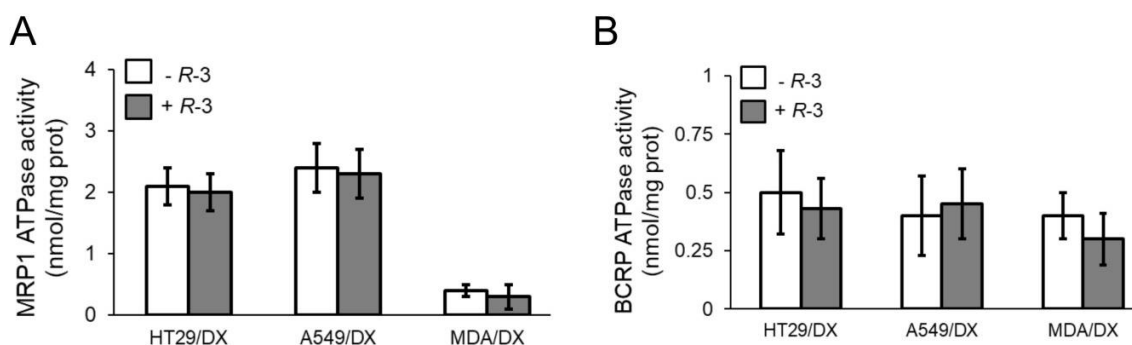
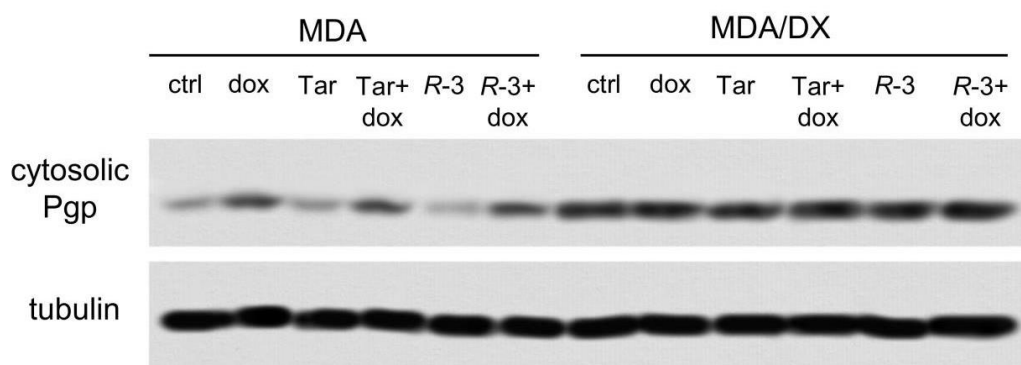


**Figure S1.** Structure of Tariquidar and *R-3*.



**Figure S2. MRP1 and BCRP activity in *R-3*-treated cells.** Human colon cancer HT29 cells, non-small cell lung cancer A549 cells, triple negative breast cancer MDA-MB-231 cells and their doxorubicin (DX)-resistant variants were cultured in fresh. medium (- *R-3*) or in medium containing 75 nM *R-3* (+ *R-3*). MRP1 (a) and BCRP (b) ATPase activity was measured on membrane extracts spectrophotometrically in duplicates. Data are means  $\pm$  SD ( $n = 3$ ).



**Figure S3. Amount of Pgp in whole cell extracts.** Human triple negative breast cancer MDA-MB-231 cells and their doxorubicin (DX)-resistant variant were incubated 24 h, in fresh medium (ctrl) or in medium containing 5  $\mu$ M doxorubicin (dox). When indicated, 75 nM Tariquidar (Tar) or 75 nM *R-3* were added. The amount of Pgp was measured in cytosolic extracts, excluding the biotinylated plasma-membrane-associated proteins, by immunoblotting. Tubulin was used as control. of equal protein loading. The image is representative of 1 out of 3 experiments.