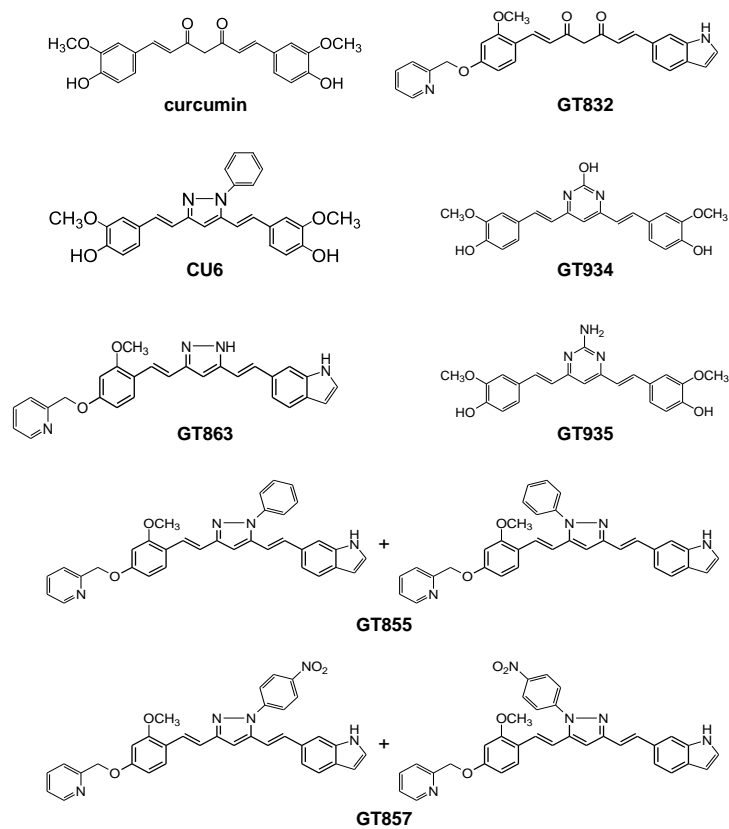
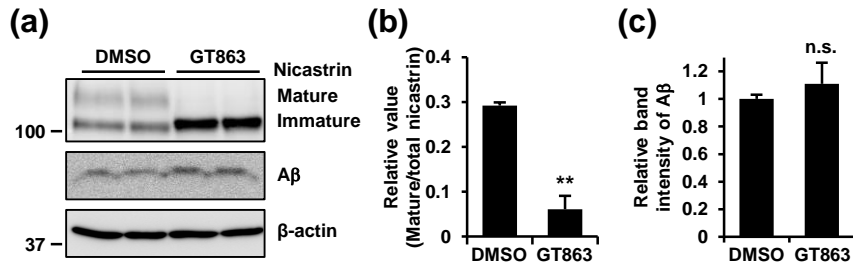


Supplementary Figure S1



Supplementary Figure S1
Chemical structural of curcumin derivatives

Supplementary Figure S2



Supplementary Figure S2 Effect of kifunensine treatment on A β production in CHO-APPswe cells. **(a-d)** CHO-APPswe cells were treated with 1 μ g/ml kifunensine (Kif) for 48 h. **(a)** Whole cell lysates were immunoblotted with appropriate antibodies as indicated. **(b-c)** Band intensities of nicastrin **(b)** and A β **(c)** were quantified by densitometric scanning, relative value being shown, mean \pm S.D. n = 3, **, p < 0.01, n.s. = not significant.