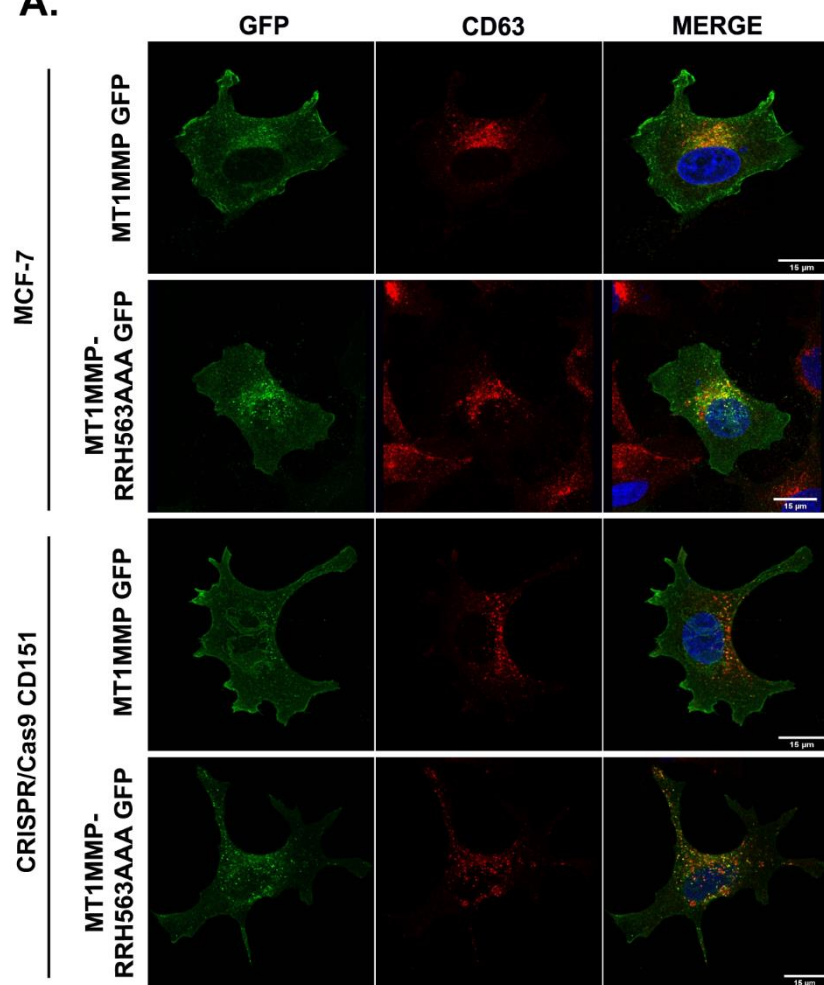


Figure S1. MCF-7 cells were transfected with mEGFP-tagged MT1-MMP constructs and plated onto 20 $\mu\text{g/mL}$ collagen I-coated coverslips, fixed and labeled with anti-EEA1 (A), anti-CD63 (B) or anti-LAMP-1 (C) in red. Bars 15 μm .

A.



B.

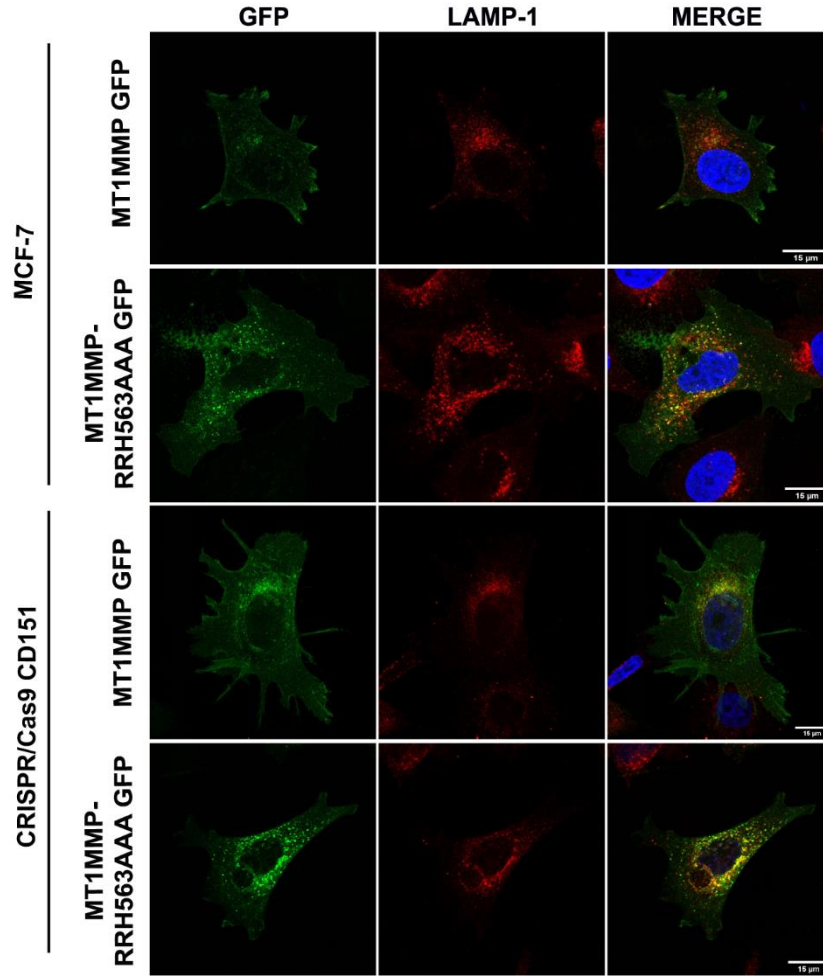


Figure S2. MCF-7 wt or CRISPR/Cas9 CD151 cells were transfected with mEGFP-tagged MT1-MMP constructs (wt or RRH563AAA) and plated onto 20 μ g/ml collagen I-coated coverslips, fixed and labeled with anti-CD63 (**A**) or anti-LAMP-1 (**B**) in red. Bars 15 μ m.