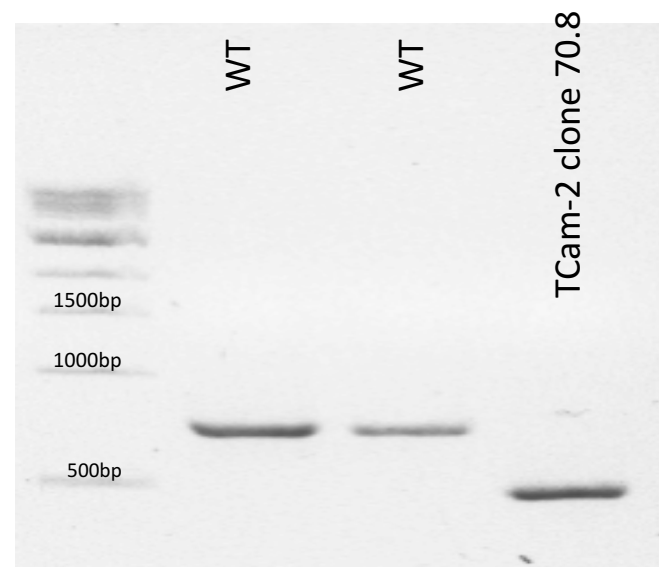
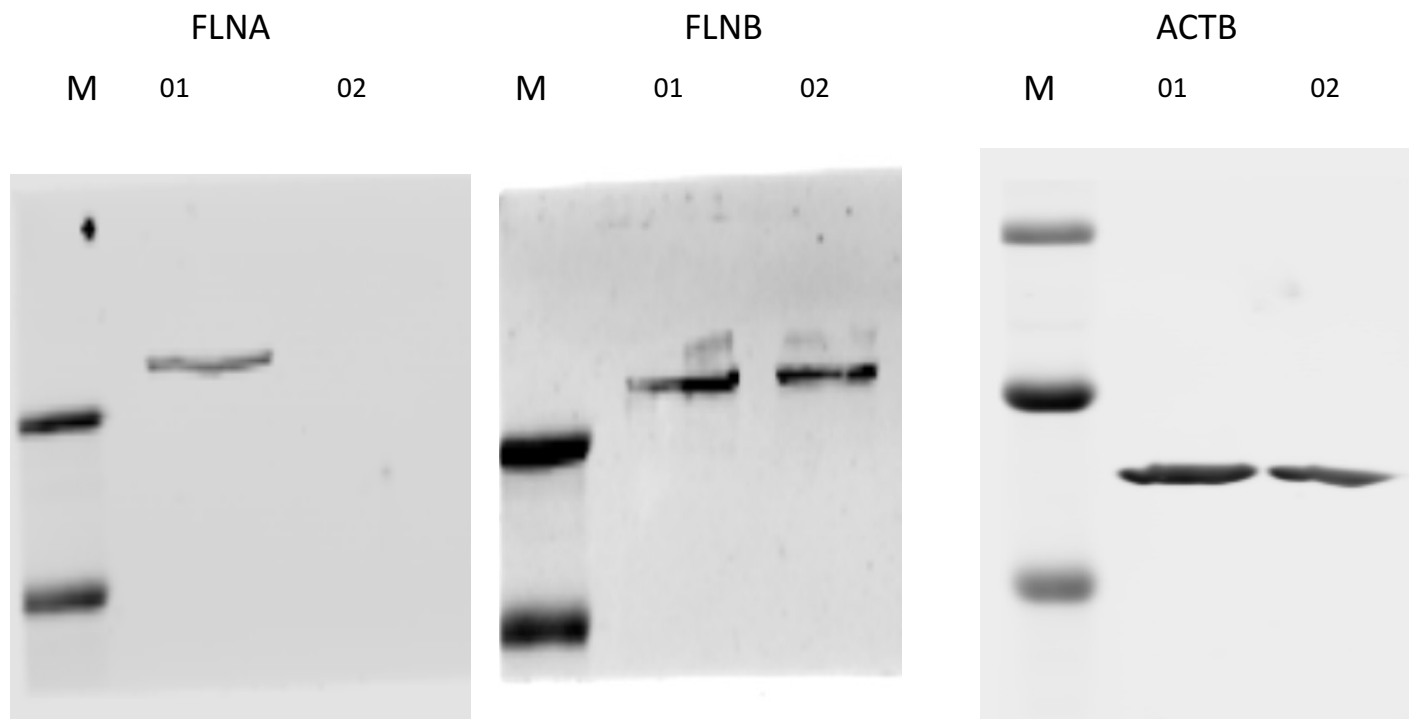


Original PCR-Data: Fig. S1



Original WB-Data: Fig. 3

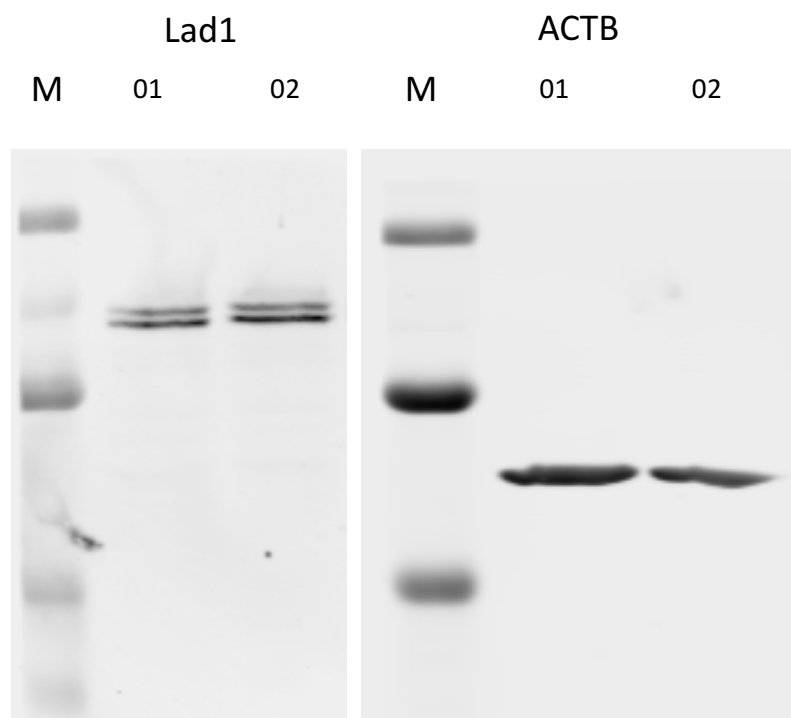


M: Marker

01: TCam-2 WT

02: TCam-2 FLNA-KO

Former Original WB-Data: Fig. 6

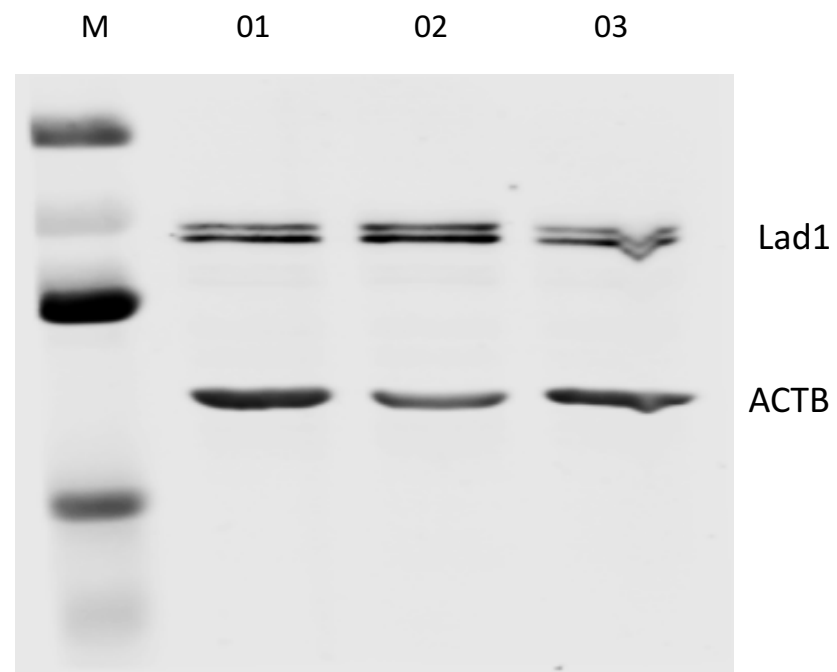


M: Marker

01: TCam-2 WT

02: TCam-2 FLNA-KO

New Original WB-Data: Fig. 6



M: Marker
01: TCam-2 WT
02: TCam-2 FLNA-KO Clone 70.8
03: Tcam-2 FLNA-KO Clone 71.3

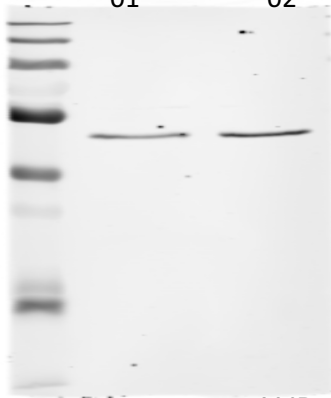
Original WB-Data: Fig. 7

01: TCam-2 WT

02: TCam-2 FLNA-KO

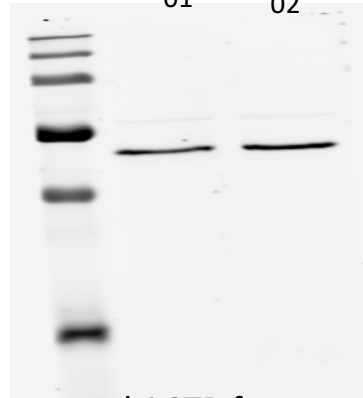
WB: Nanog

01 02



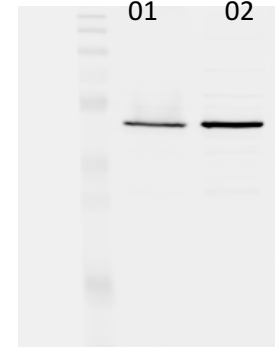
WB1: Oct3/4

01 02



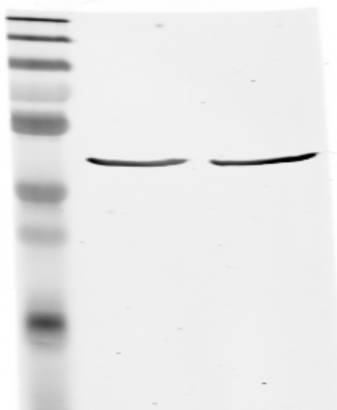
WB2: Oct3/4

01 02



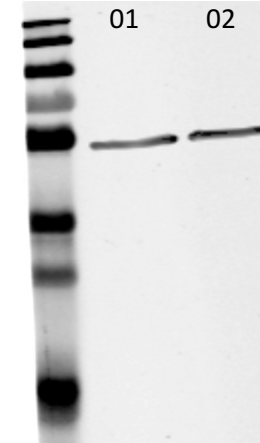
WB: Loading control ACTB for
NANOG, WB1: OCT3/4

01 02



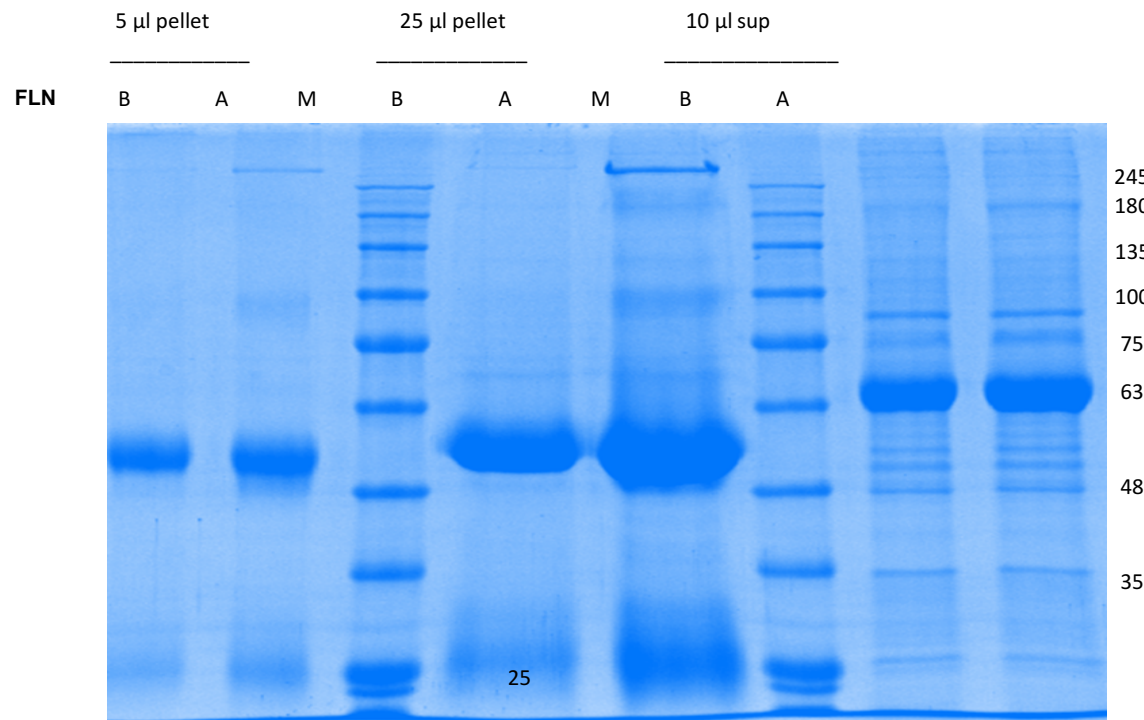
WB2: Loading control Tubulin for WB2: OCT3/4
(not quantified)

01 02



Original IP-Data: Fig. S

Tcam-2 cells: IP using antibodies directed against FLNA or FLNB and protein G beads



Protein G Pellet in 80 µl 2x SB > load: 5 or 25 µl

" Sup: 200 µl + 200 µl 2x SB > Load: 10 µl

Western blot analysis of potential FLN interactors

