

FZD10 Carried by Exosomes Sustains Cancer Cell Proliferation

Maria Principia Scavo ^{1,*}, **Nicoletta Depalo** ², **Federica Rizzi** ², **Chiara Ingrosso** ², **Elisabetta Fanizza** ^{2,3}, **Annarita Chieti** ¹, **Caterina Messa** ⁴, **Nunzio Denora** ^{2,5}, **Valentino Laquintana** ⁵, **Marinella Striccoli** ², **Maria Lucia Curri** ^{2,3} and **Gianluigi Giannelli** ^{1,6,*}

¹ Personalized Medicine Laboratory, National Institute of Gastroenterology "S. De Bellis", Via Turi 27, Castellana Grotte, 70013 Bari, Italy

² Institute for Chemical and Physical Processes (IPCF)-CNR SS Bari, Via Orabona 4, 70126 Bari, Italy

³ Dipartimento di Chimica, Università degli Studi di Bari Aldo Moro, Via Orabona 4, 70126 Bari, Italy

⁴ Laboratory of Clinical Biochemistry, National Institute of Gastroenterology "S. De Bellis", Via Turi 27, Castellana Grotte, 70013 Bari, Italy

⁵ Dipartimento di Farmacia, Scienze del Farmaco, Università degli Studi di Bari Aldo Moro, Via Orabona 4, 70126 Bari, Italy

⁶ National Institute of Gastroenterology "S. De Bellis", Scientific Direction, Via Turi 27, Castellana Grotte 70013 Bari, Italy

* Correspondence: maria.scavo@irccsdebellis.it (M.P.S.); gianluigi.giannelli@irccsdebellis.it (G.G.); Tel.: +39-080-4994697 (M.P.S.)

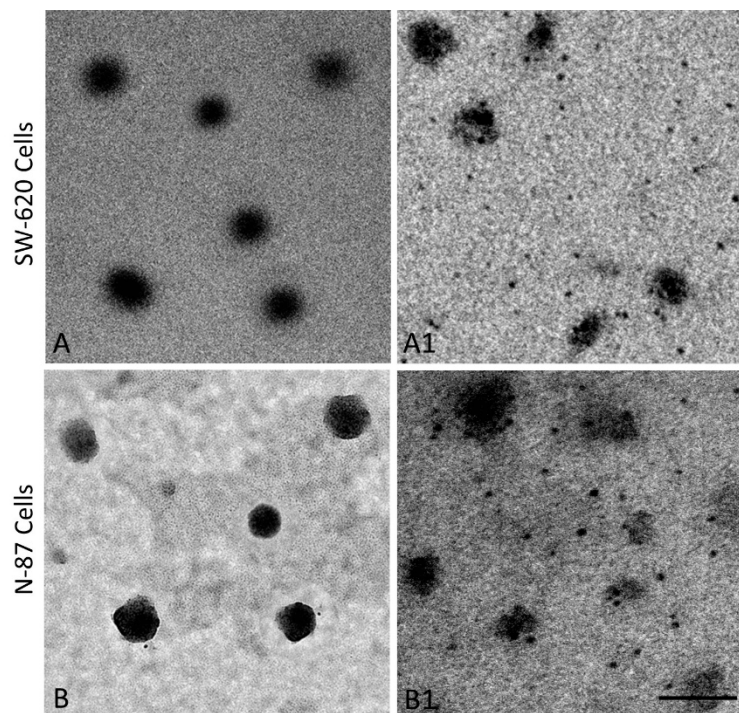


Figure S 1. Representative TEM micrographs obtained with positive staining of exosomes freshly extracted from culture medium of SW-620 (A) and N-87 (B) cells and of as synthesized Au NPs after treatment with FZD10 antibody for 16 hours, with BSA for 1 hour and then with exosomes extracted from SW-620 (A1) or N-87 (B1) cells for 15 minutes. Scale bar 100 nm.

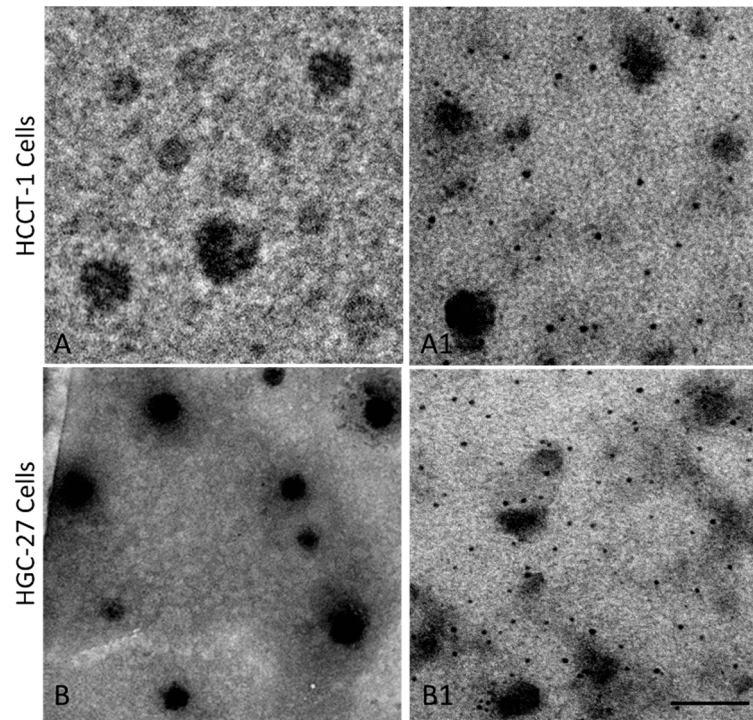


Figure S 2 Representative TEM micrographs obtained with positive staining of exosomes freshly extracted from culture medium of HCCT-1 (A) and HGC-27 (B) cells and of as synthesized Au NPs after treatment with FZD10 antibody for 16 hours, with BSA for 1 hour and then with exosomes extracted from HCCT-1 (A1) or HGC-27 (B1) cells for 15 minutes. Scale bar 100 nm.