

Supplementary Figures

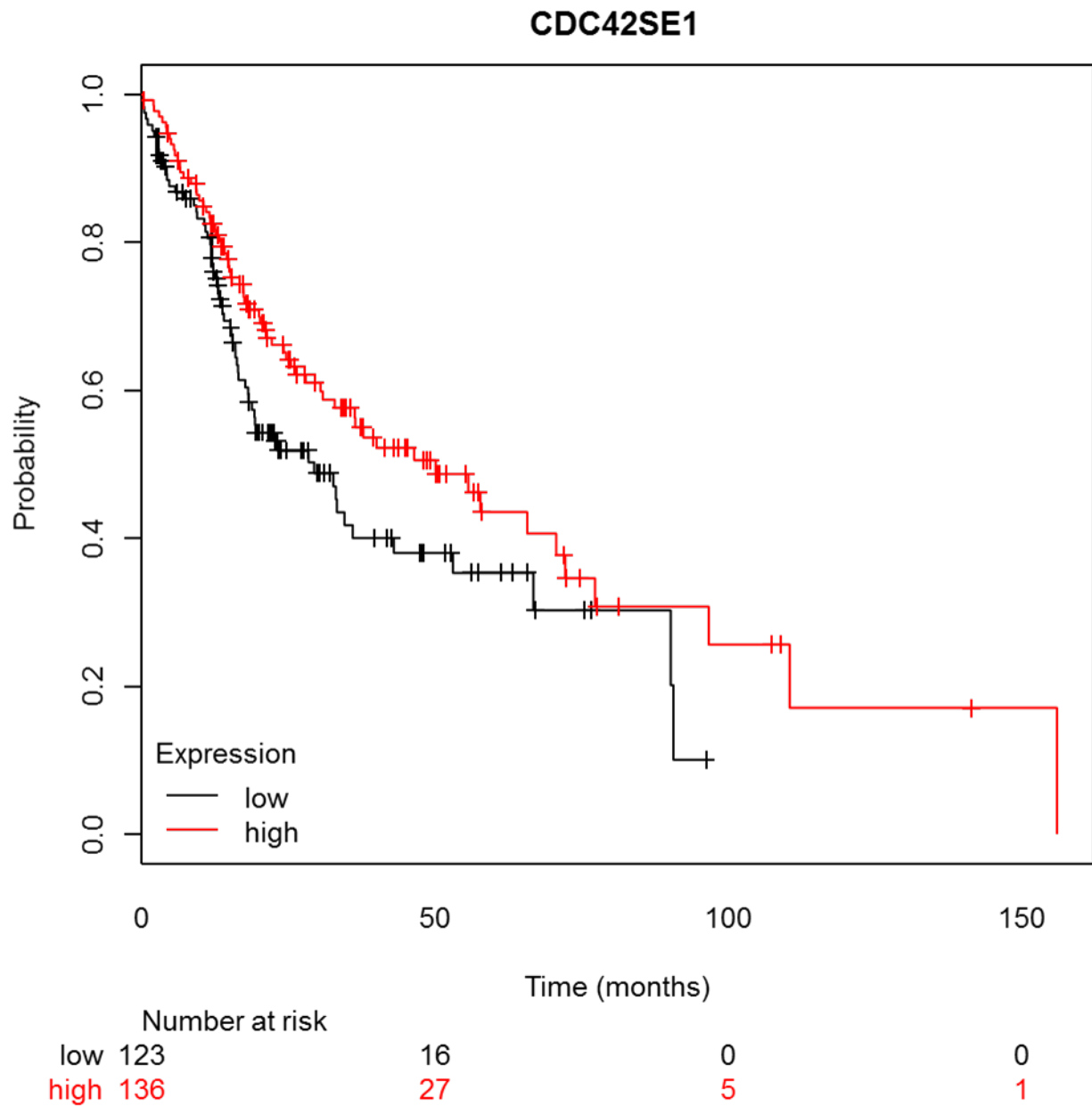


Figure S1: CDC42SE1 expression in Head-neck squamous cell carcinoma using Kaplan -Meier Plotter. The Plot showing overall survival in Head-neck squamous cell carcinoma. In Red; patient with expressions above the median, Black; patient with expressions below the median. CDC42SE1, $p=0.0043$

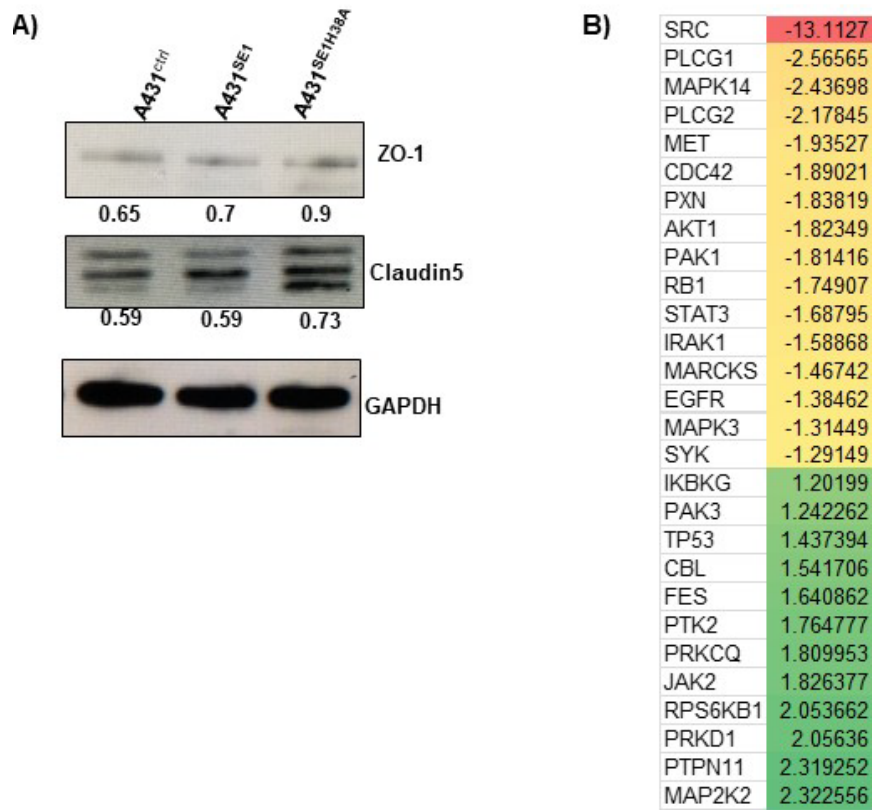


Figure S2: Overexpression of CDC42SE1 in A431 cells does not affect expression of tight junction proteins

(A) Protein lysate from A431^{Ctrl}, A431^{SE1} and A431^{SE1-H38A} were subjected to western blot using antibodies against ZO-1 and Claudin-5. GAPDH was used as a loading control (n=3). (** $p \leq 0.001$, ** $p \leq 0.01$, * $p \leq 0.05$). **(B)** The heat map represents genes implicated in spreading as was predicted to be inhibited by IPA software using KinexTM data of protein lysate of A431^{SE1} and A431^{Ctrl}.

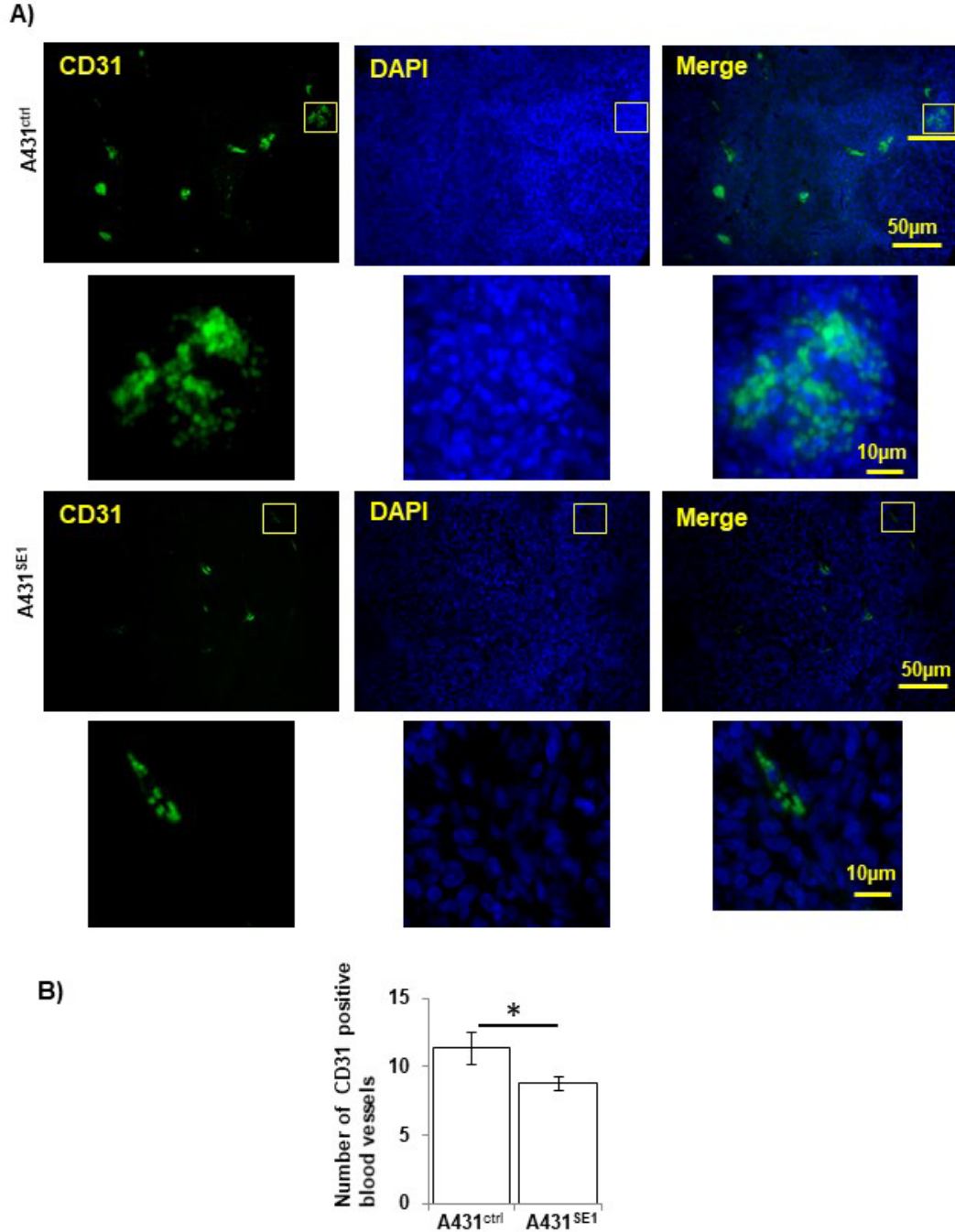


Figure S3: CDC42SE1 expression decreased angiogenesis in xenograft tumor

Tumor tissue sections from the A431^{Ctrl} and A431^{SE1} cells injected mice were prepared and probed with anti-CD31 (blood vessel endothelial cells marker) and subsequently with Alexa488 secondary antibodies to visualize expression of CD31 in tumor sections. The images were taken with 40X objective lens. Arrows indicate CD31 positive cells (n=6). The positive staining of CD31 in A431^{Ctrl} and A431^{SE1} tumor sections were manually counted at 3 random fields as shown in figure. Results are mean \pm SD *** $p < 0.001$, ** $p < 0.01$, * $p < 0.05$.

