

Supplementary Materials

Figure S1. Recruitment of Sp100 and Daxx to additional PML-I phosphorylation mutants in PML-depleted A594 cells. A549-shPMLs were transduced with mutant forms of PML-I and Sp100 and Daxx were detected by immunofluorescence, and exogenous PML was detected by autofluorescence and in Figure 2. Scale bar = 10 μ m.

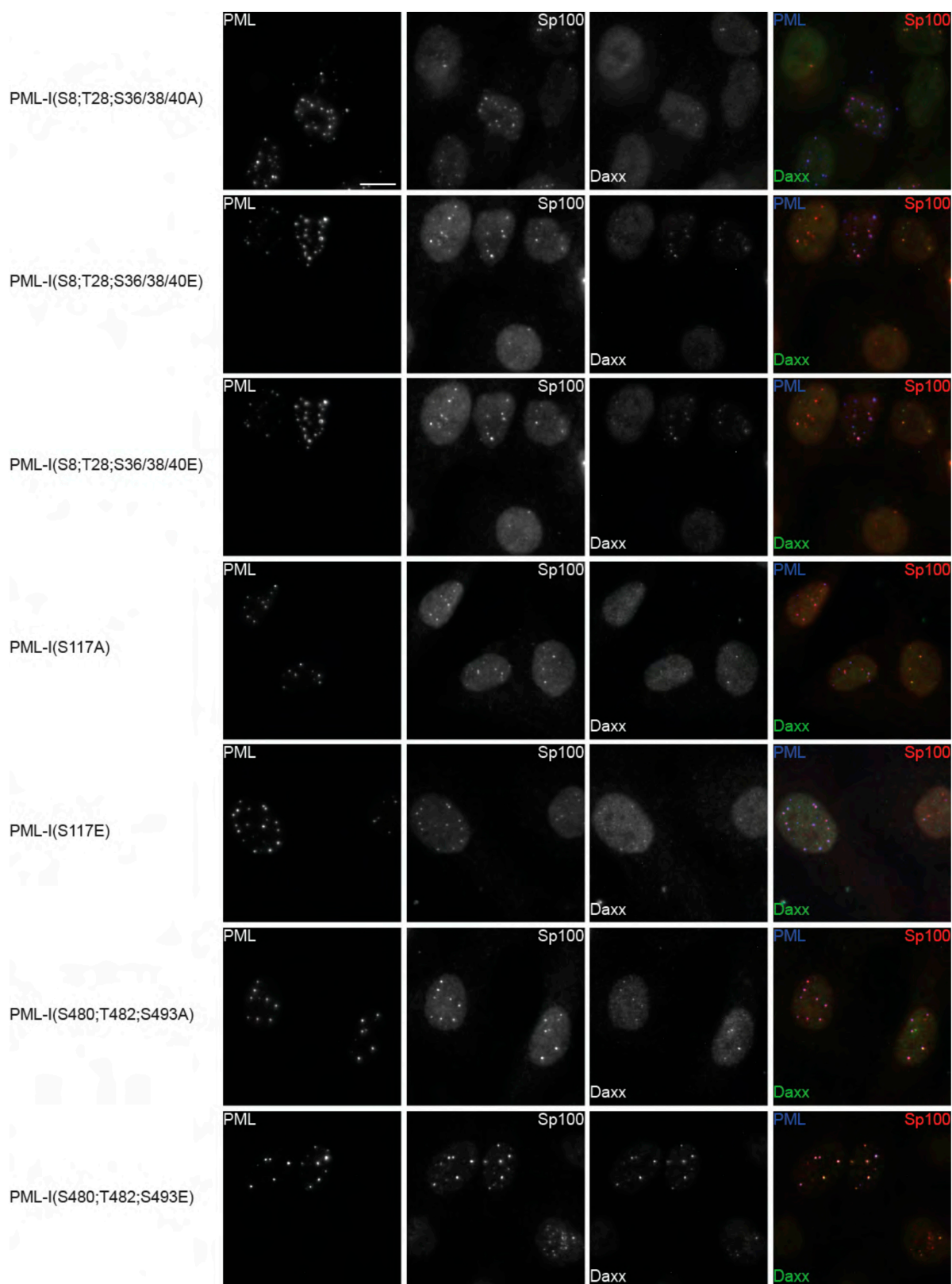


Figure S1. Cont.

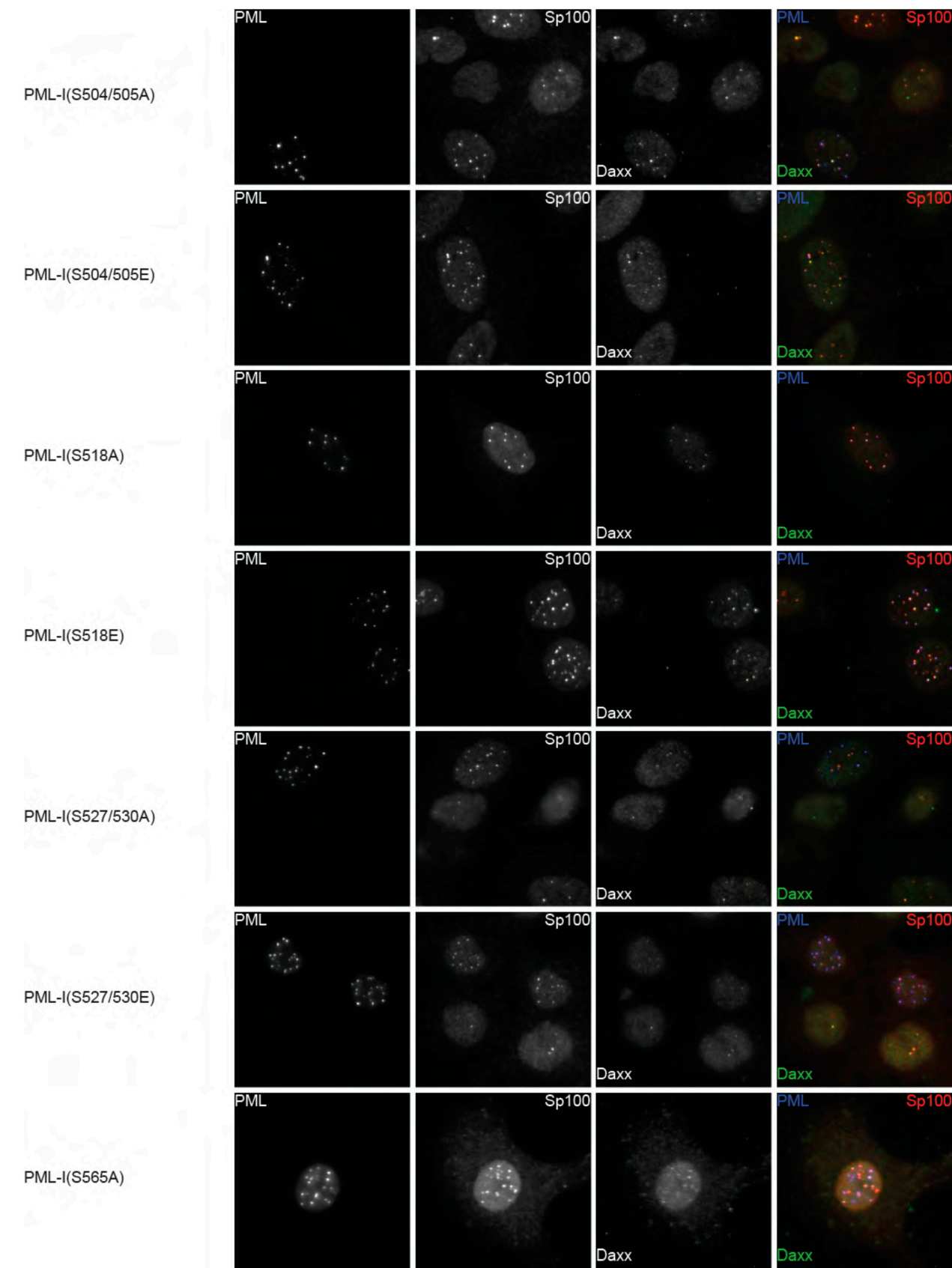


Figure S1. Cont.

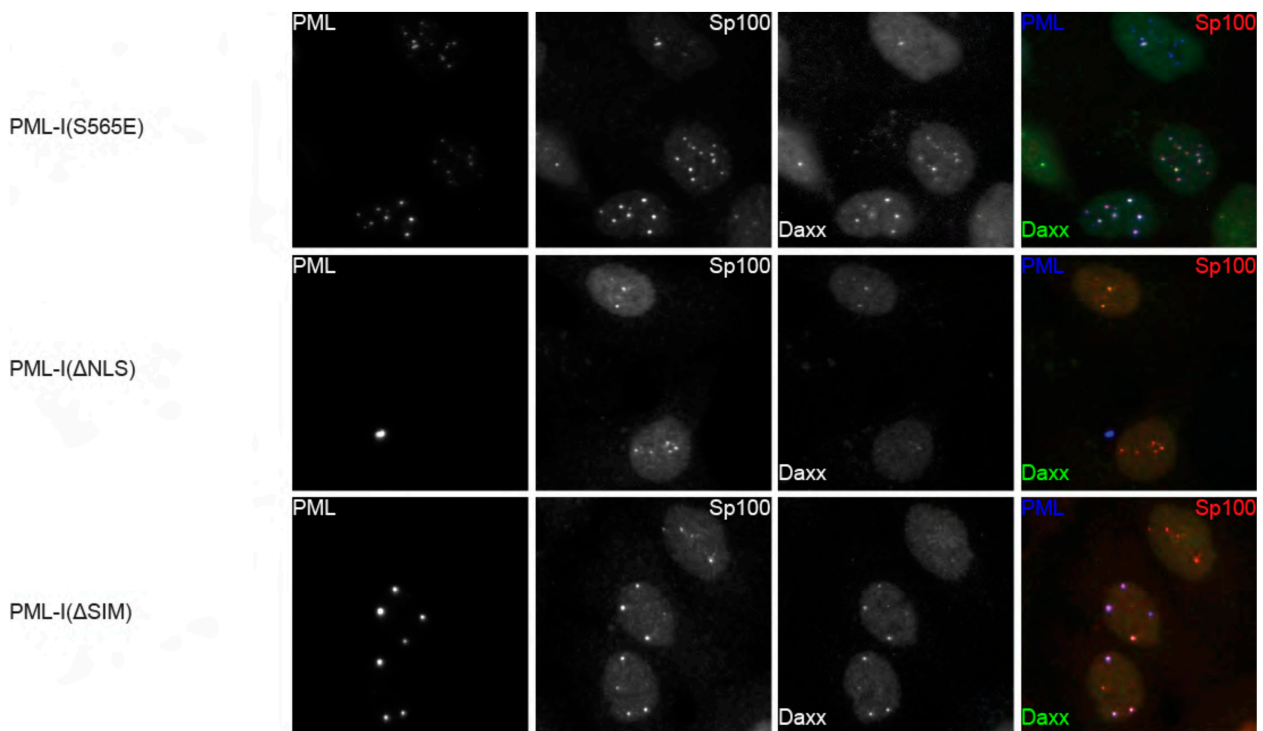


Figure S2. Recruitment of Sp100 and Daxx to PML-I and PML-I mutants in PML- depleted HepaRG cells. (A) HepaRG cells that either express a control shRNA (HA- shNeg) or an shRNA that targets PML (HA-shPML) and stained with antibodies to detect PML and Sp100 or Daxx by immunofluorescence. (B) HA-shPMLs were transduced with FLAG-, CFP-tagged PML-I, or a SUMOylation-deficient or phosphorylation mutant form of PML-I. Sp100, Daxx, and PML were detected as in Figure 2. Scale bar = 10 μ m.

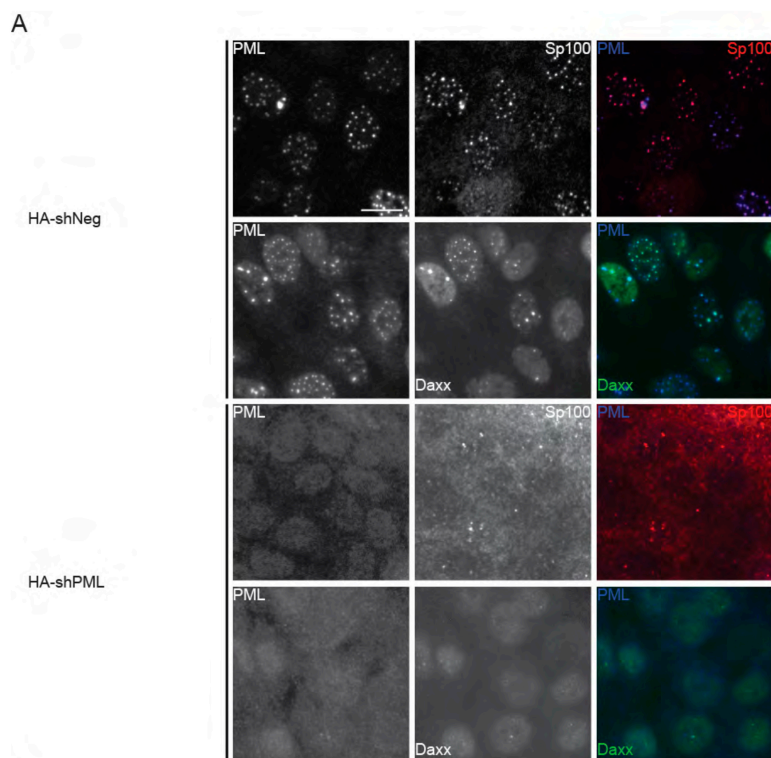


Figure S2. Cont.

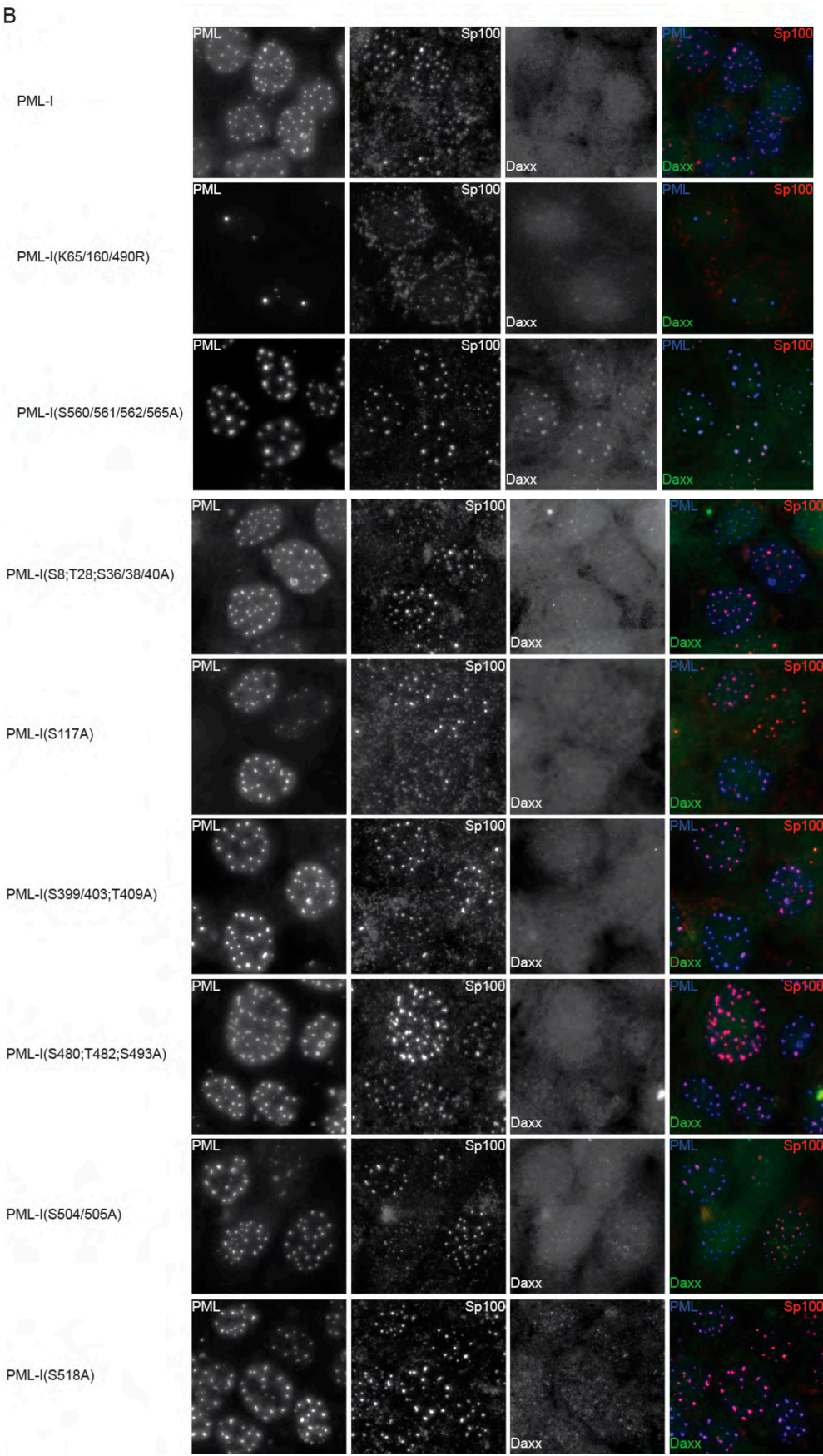


Figure S2. Cont.

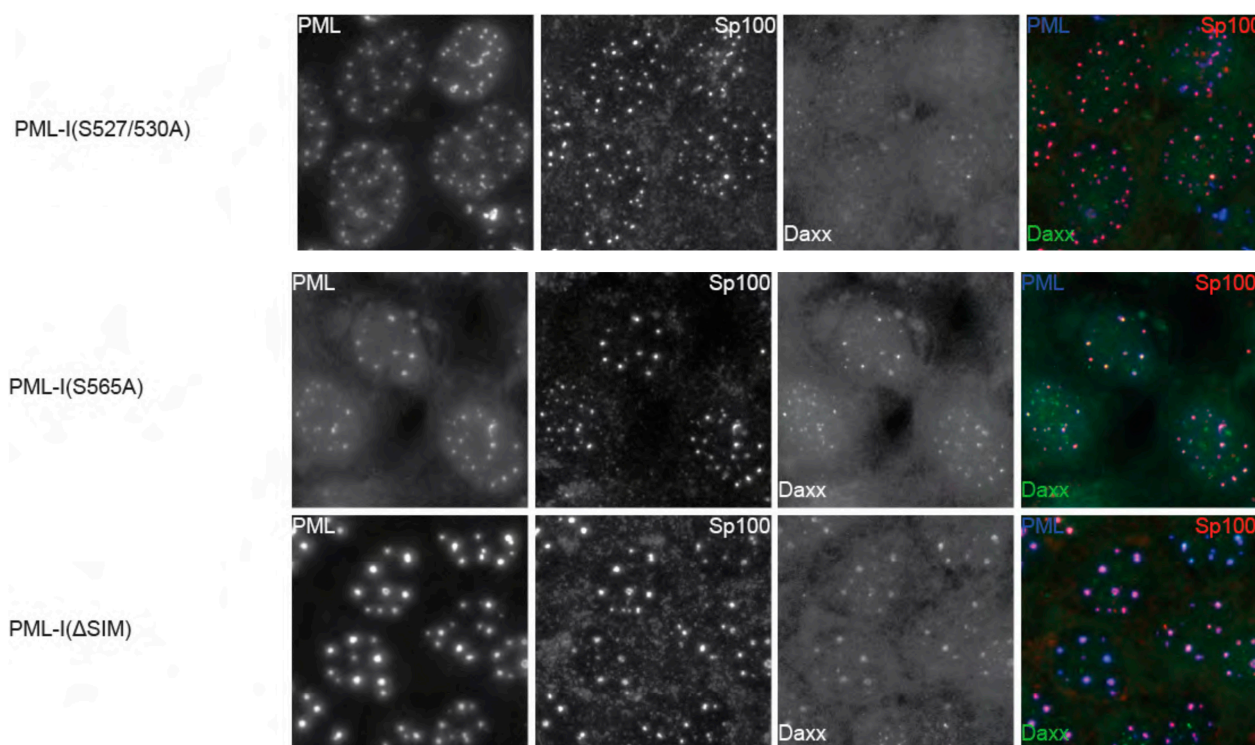


Figure S3. Colocalization between additional PML-I mutants and ICP0. HA-shPML cells were transduced with an expanded set of PML-I mutants, infected with HSV-1, and fixed and stained with antibodies against ICP0 and ICP4 as for Figure 5. PML is shown as red, ICP0 as green, and ICP4 as blue in the merged image. Scale bar = 10 μ m.

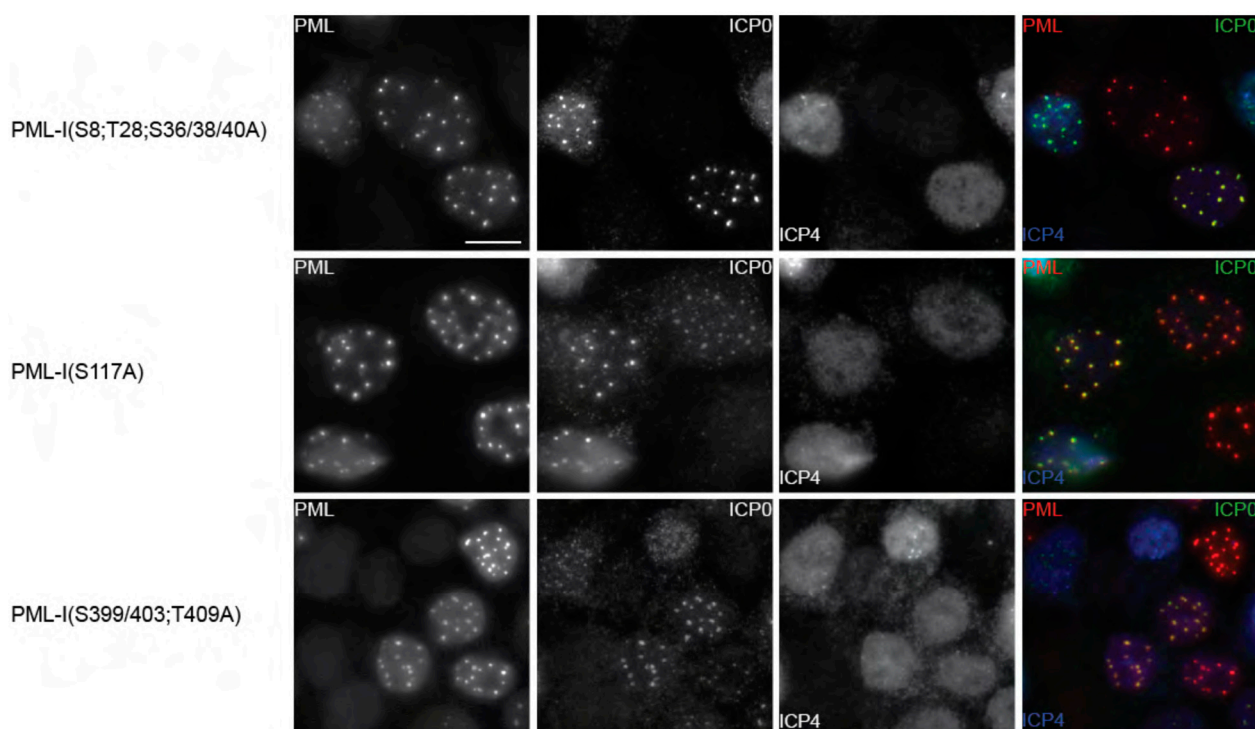


Figure S3. Cont.

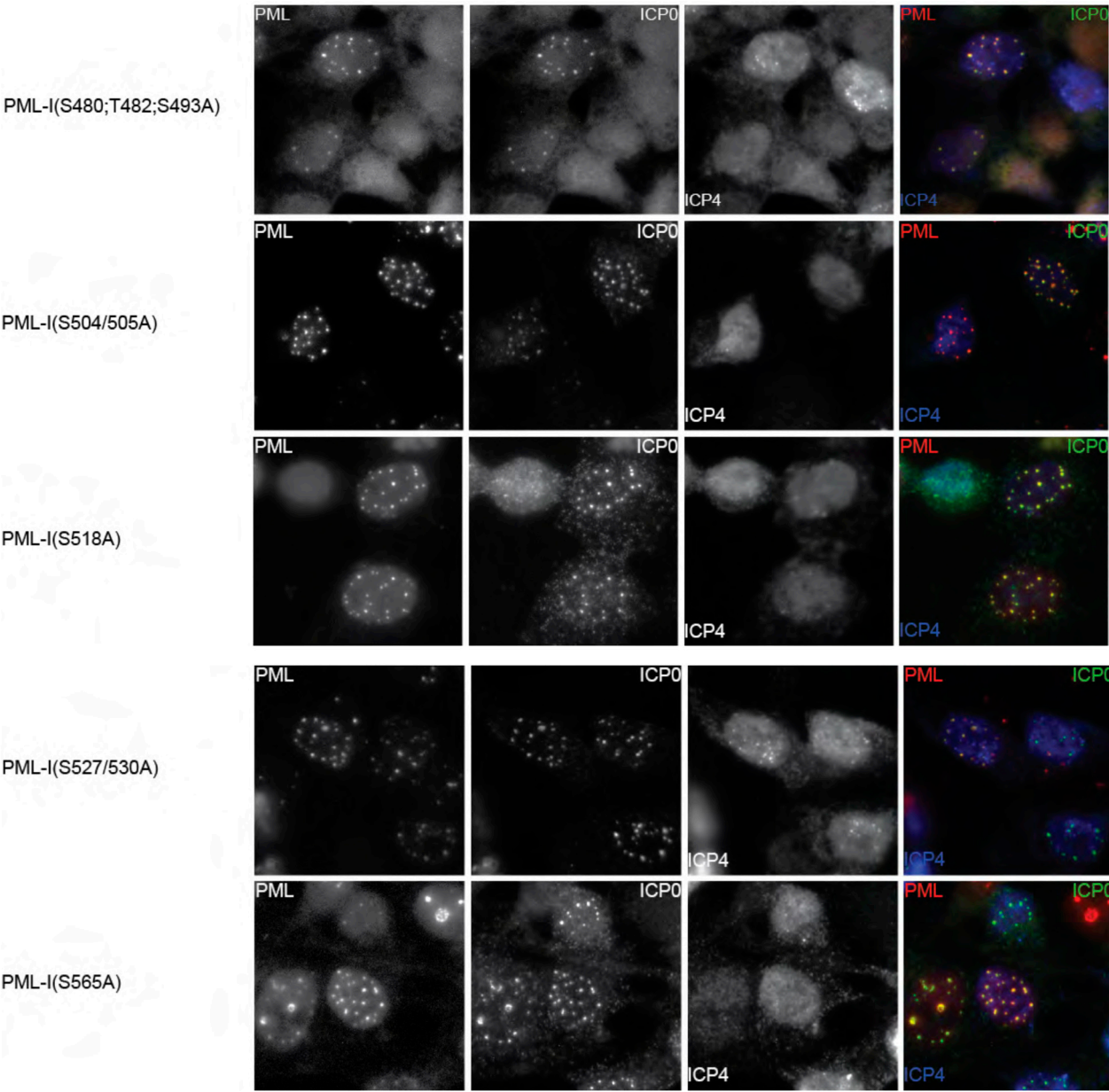


Figure S4. Colocalization between PML-I or PML-I mutants and ICP0 in A549- shPML cells. A549-shPML cells transduced with FLAG-, CFP-tagged PML-I or each PML-I mutant were infected with HSV-1 at 2 PFU/cell. At 2 hpi, the cells were fixed and stained with antibodies against ICP0. PML is shown as red and ICP0 as green in the merged image. Scale bar = 10 μ m.

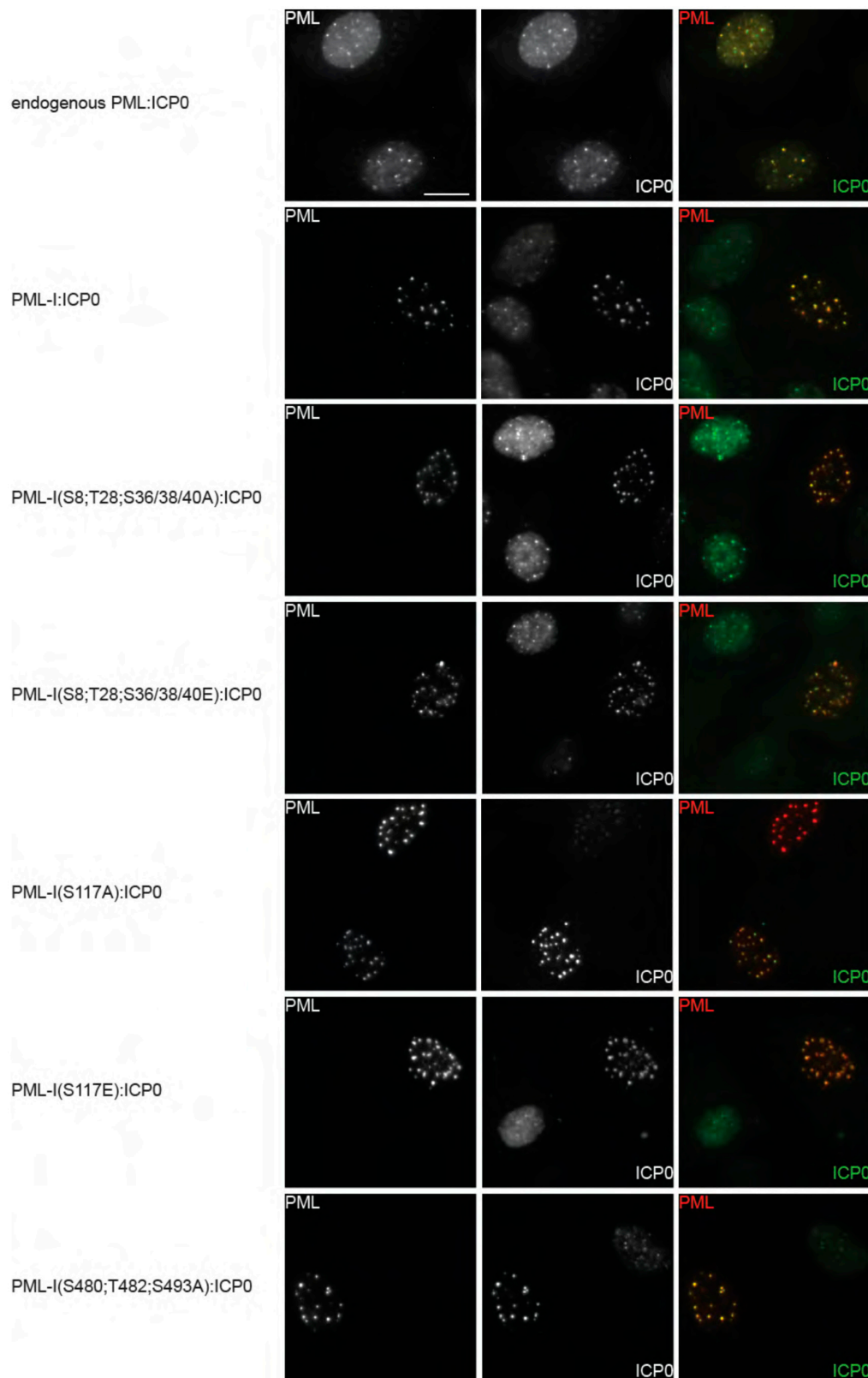


Figure S4. Cont.

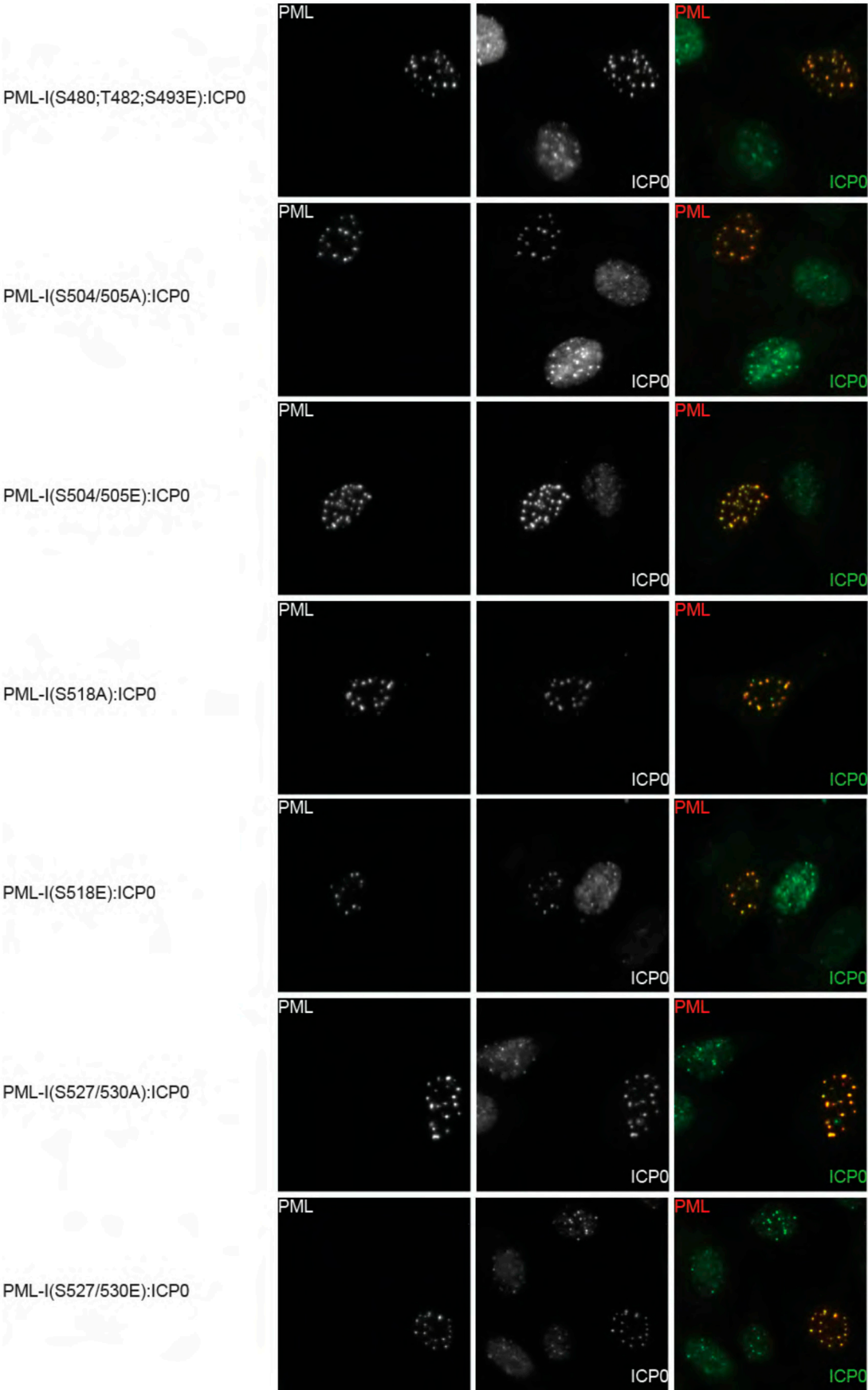


Figure S4. Cont.

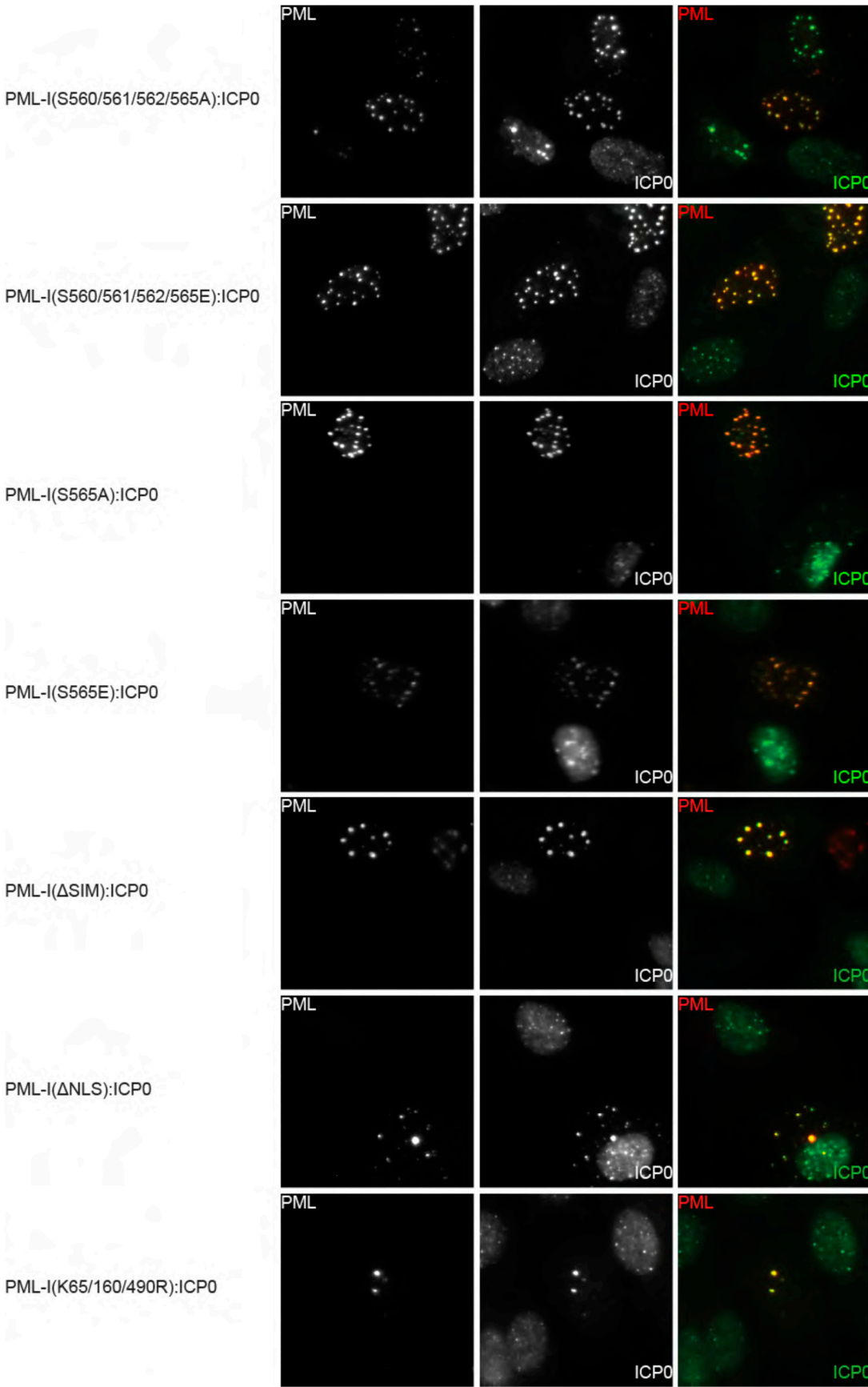


Figure S5. Recruitment of additional PML-I mutants to incoming viral genomes. HA-shPML cells transduced with an expanded set of PML-I mutants were infected with an ICP0-null virus and were fixed and stained as in Figure 7. Scale bar = 10 μ m.

