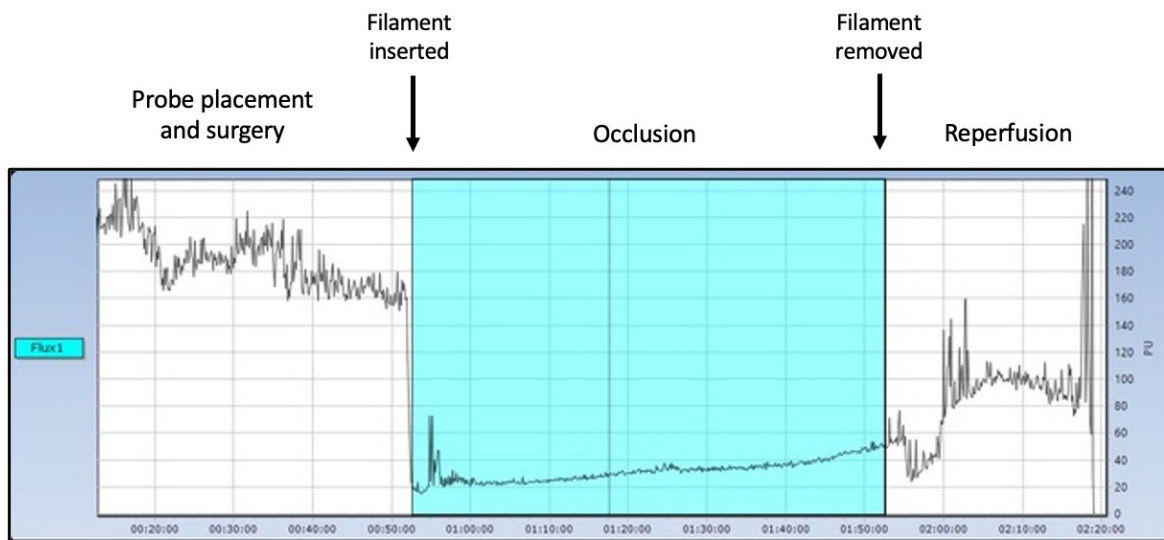
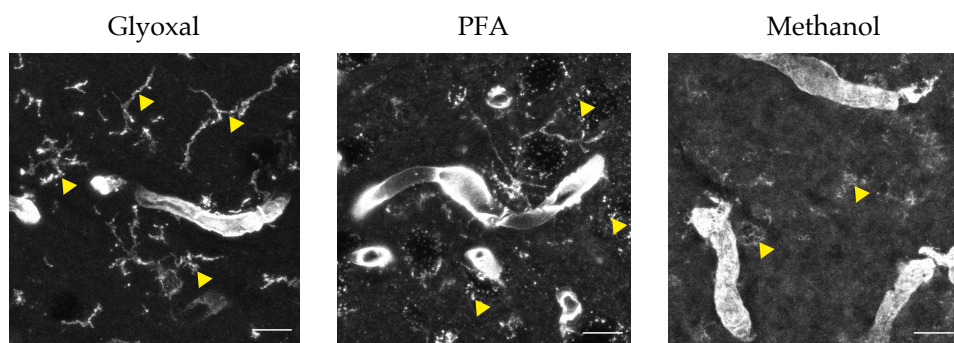


## Laser-Doppler Recording of Cerebral Blood Flow in the MCA Region



**Supplementary Figure S1.** Laser Doppler blood flow in the region of the middle cerebral artery (MCA). Highlighted in blue in the chart above, marks the occlusion period during the MCAO surgery. Approximately 80% reduction in blood flow was sustained during the occlusion period. Blood flow is restored during reperfusion, however, does not return to baseline levels due to ischemic injury.



**Supplementary Figure S2.** Fixative effects on lectin staining. We examined the staining patterns of tomato lectin on tissue perfusion-fixed with glyoxal, 4% paraformaldehyde (PFA), and fresh-frozen tissue fixed with methanol. Glyoxal-fixation resulted in staining of microglia exhibiting ramified processes (triangles) and little background fluorescence. PFA fixation resulted in fewer identifiable microglia and non-specific, punctate background fluorescence (triangles). Methanol fixation resulted in weak microglial staining (triangles) with few ramifications.