

Figure S1. Tube formation assay in HUVEC. Phase contrast images of HUVEC tube formation incubated in the indicated TNBC TCM were acquired after 5 h. EGM-2 (+) and DMEM (-) served as control media. Scale bar: 500 μ m.

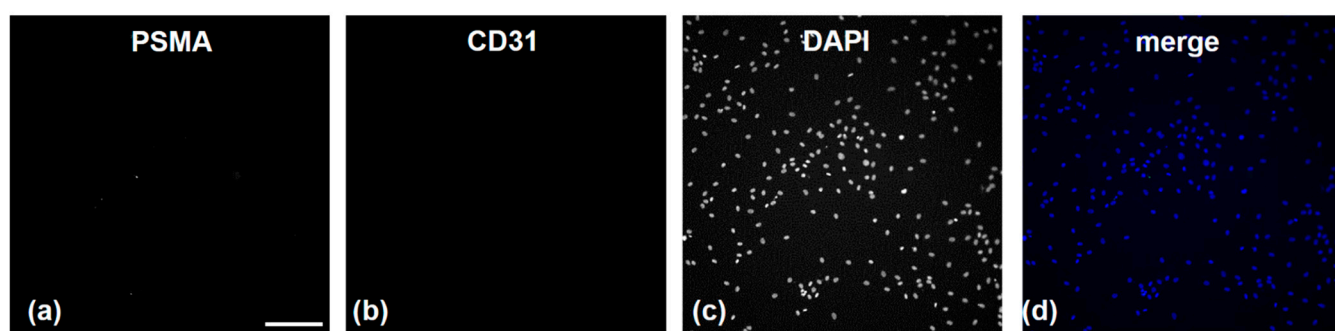


Figure S2. Antibody control. Secondary antibodies Alexa Fluor 488 and 555 were applied without primary antibodies to exclude unspecific binding. Nuclei were stained with DAPI. Scale bar: 200 μ m.

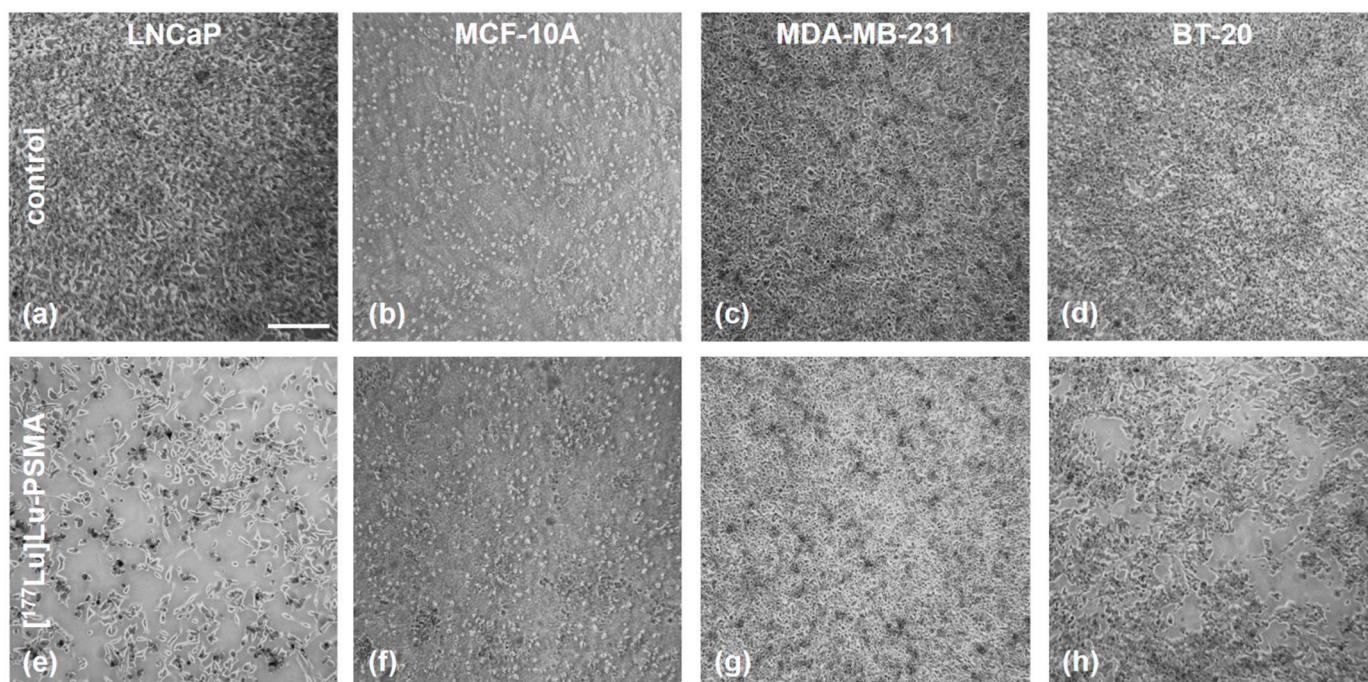


Figure S3. Cell viability of TNBC cells after treatment with $[^{177}\text{Lu}]\text{Lu-PSMA}$. Phase contrast images of the indicated cell lines were acquired subsequently before flow cytometry analysis. Scale bar: 500 μm .

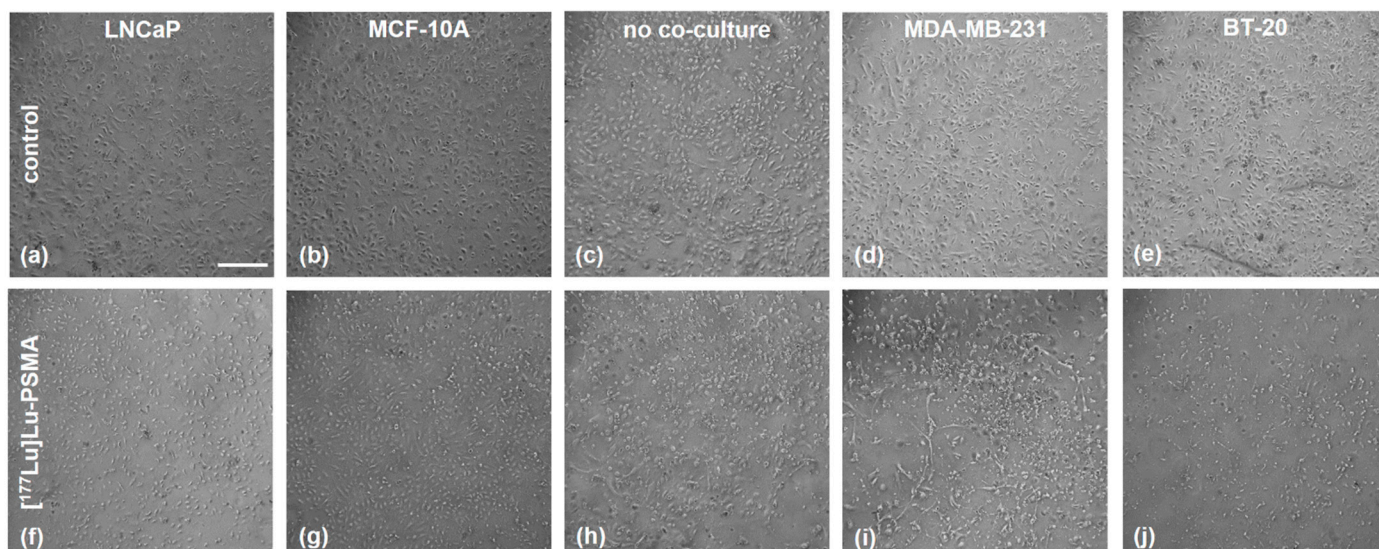


Figure S4. Cell viability of HUVECs co-cultured with the indicated cell lines after treatment with $[^{177}\text{Lu}]\text{Lu-PSMA}$. Phase contrast images of the indicated cell lines were acquired subsequently before flow cytometry analysis. Scale bar: 500 μm .