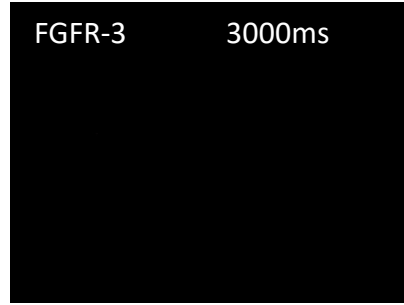
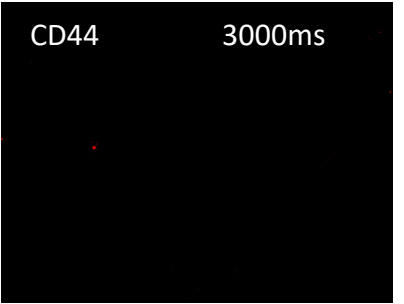
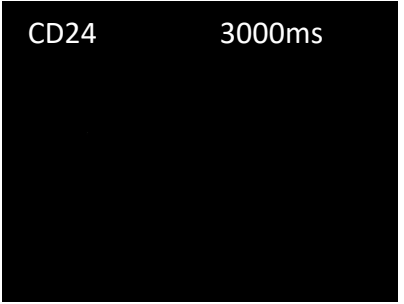
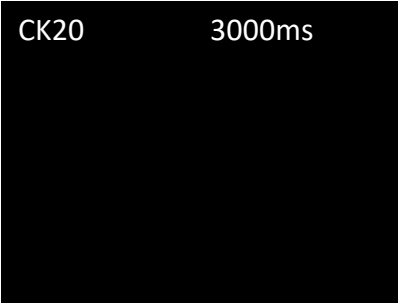
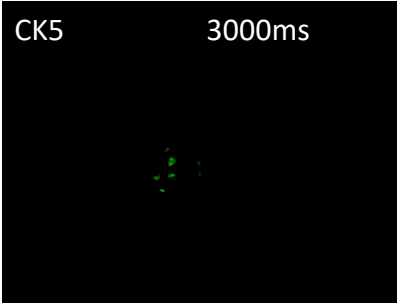
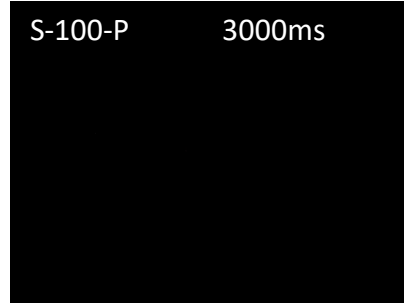
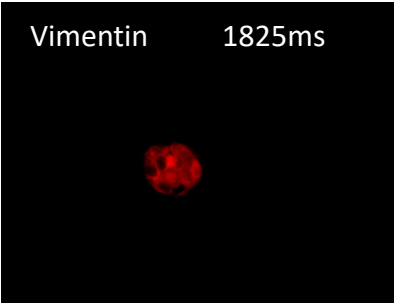
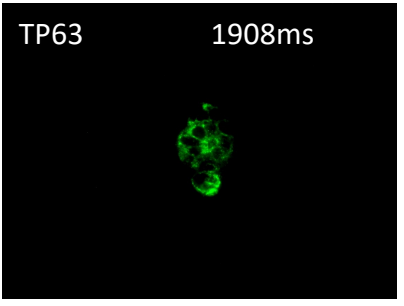
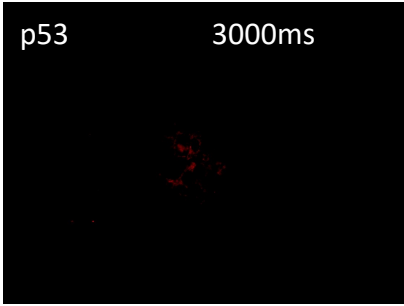
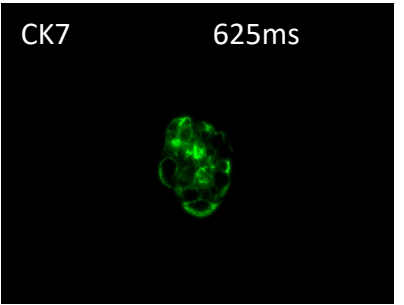
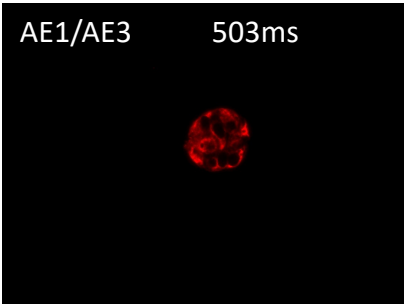
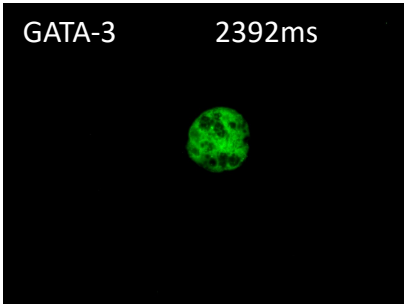
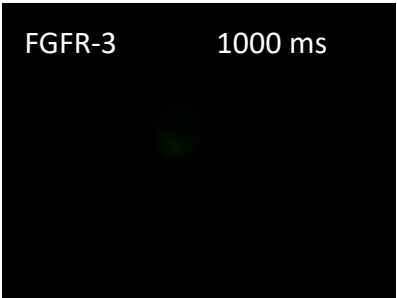
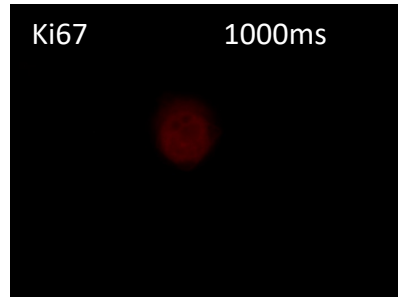
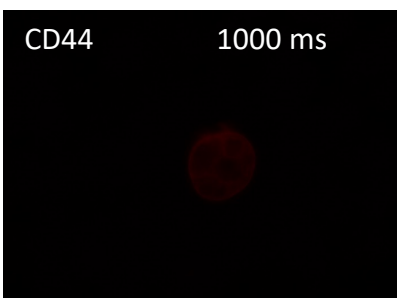
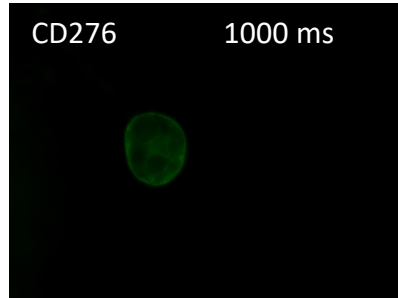
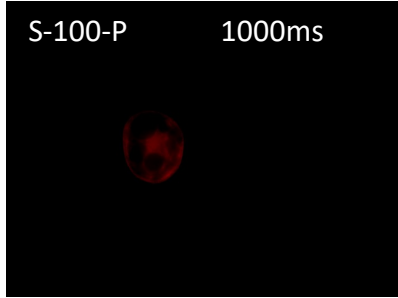
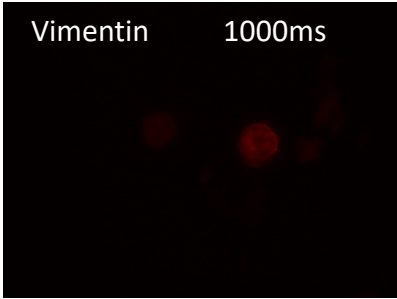
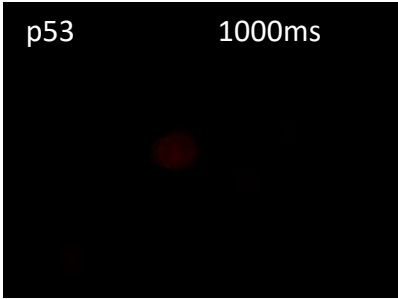
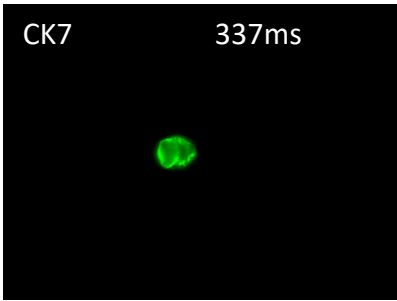
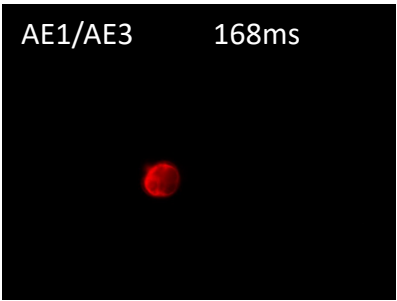
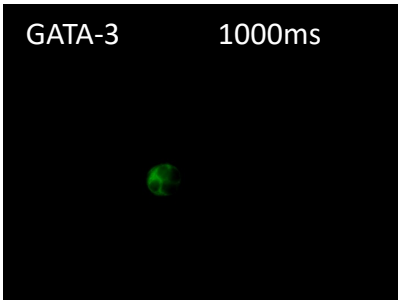


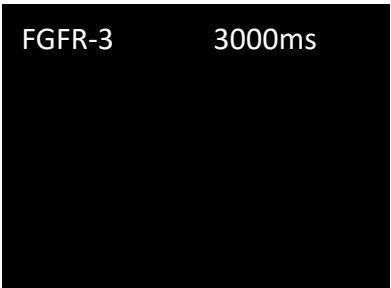
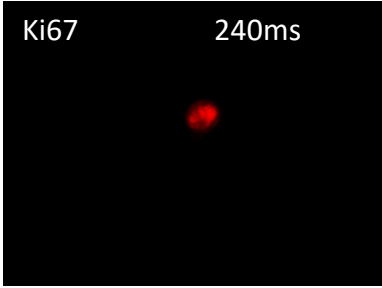
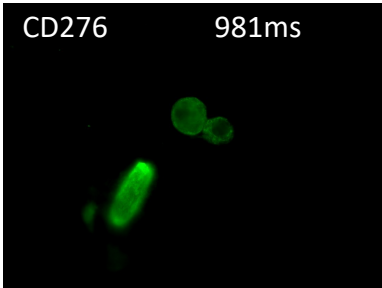
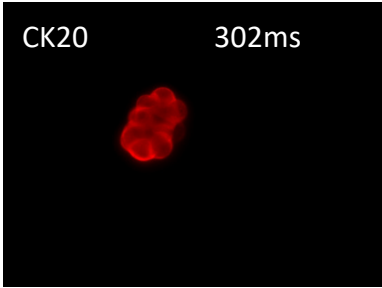
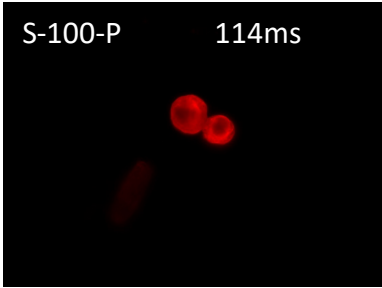
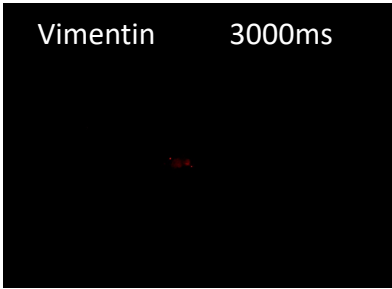
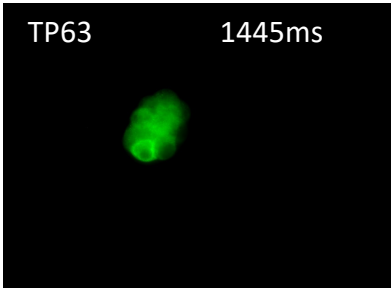
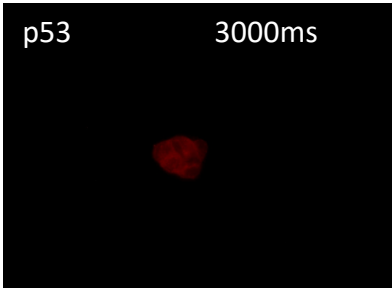
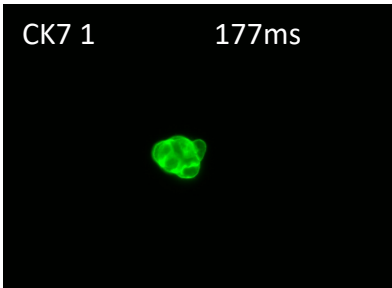
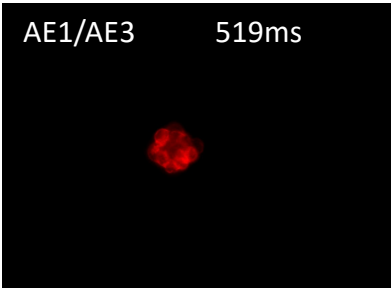
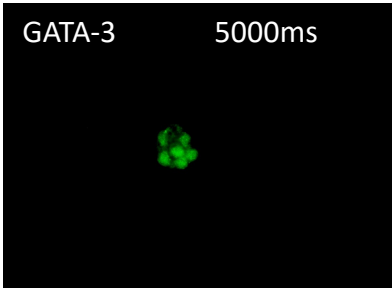
uBCO#13



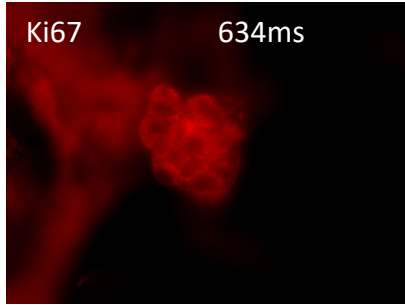
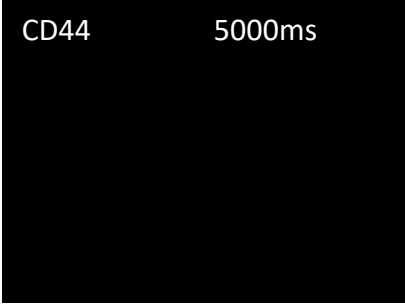
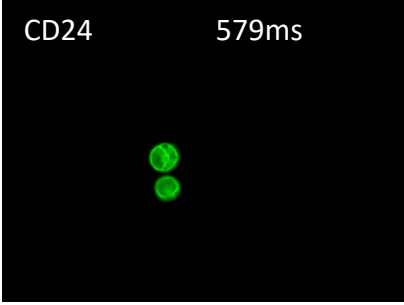
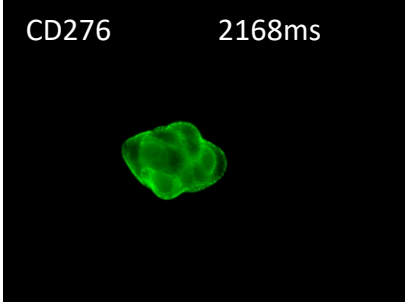
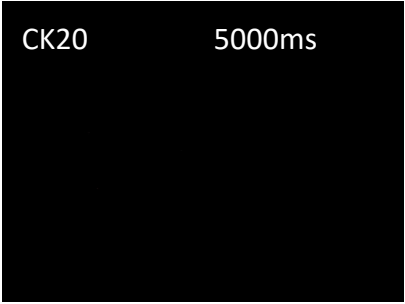
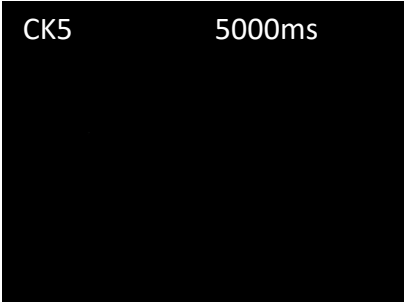
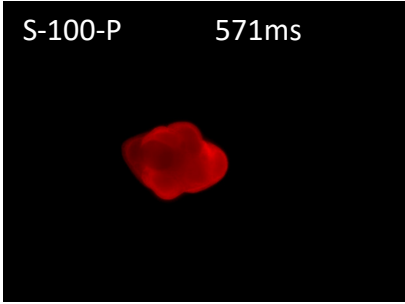
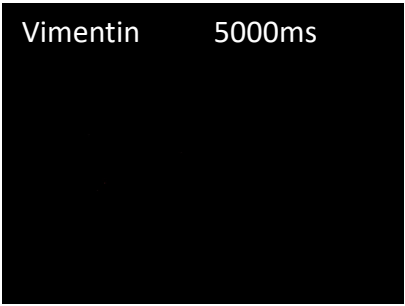
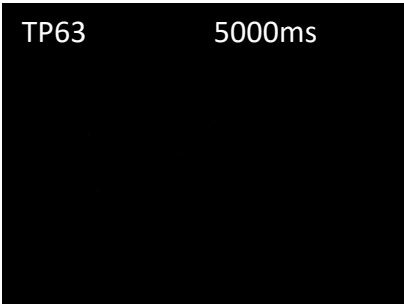
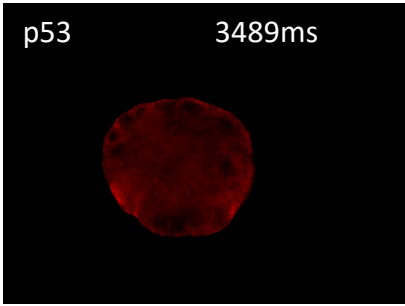
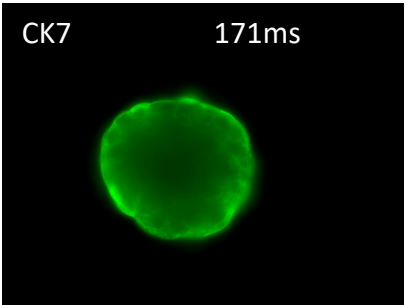
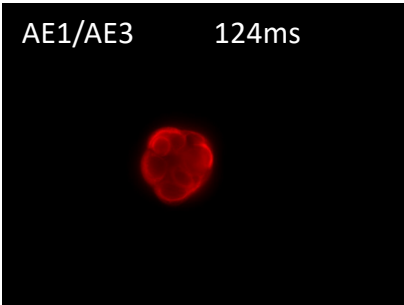
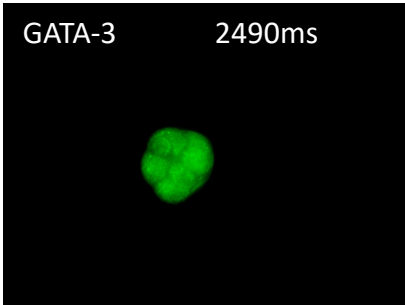
uBCO#15



uBCO#19



uBCO#22



uBCO#28

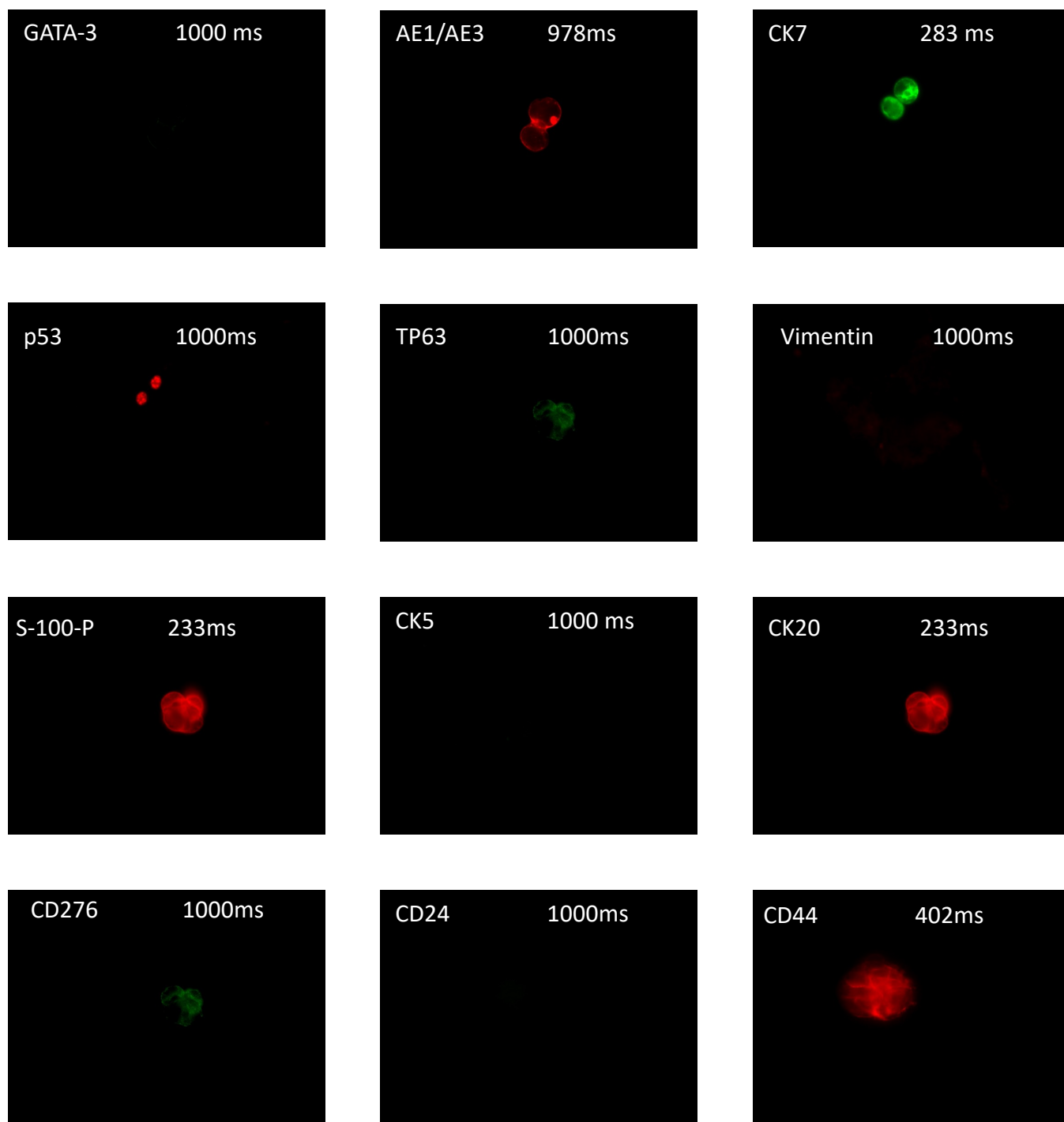


Figure S2. Immunofluorescence characterization of the uBCOs in chamber slides and their corresponding exposure times indicated in ms. Abbreviations: GATA, glutamyl amino transferase A; AE, anti-epithelial; p, protein; TP, tumor protein; CK, cytokeratin; CD, cluster of differentiation; uBCO, urine-derived bladder cancer organoid, Ki, Kiel; FGFR, fibroblast growth factor receptor; uBCO, urine-derived bladder cancer organoid; ms, millisecond.