

Review

The Role of Gut Microbiome in the Pathogenesis of Multiple Sclerosis and Related Disorders

Anna Dunalska ^{1,†} , Kamila Saramak ^{2,†}  and Natalia Szejko ^{3,4,*} 

¹ Department of Neurology, Medical University of Warsaw, 02-097 Warsaw, Poland; adunalska@gmail.com

² Department of Neurology, Hochzirl Hospital, 6170 Hochzirl, Austria; kamilasaramak@gmail.com

³ Department of Clinical Neurosciences, University of Calgary, Calgary, AB T2N 1N4, Canada

⁴ Department of Bioethics, Medical University of Warsaw, 02-091 Warsaw, Poland

* Correspondence: natalia.szejko1@ucalgary.ca; Tel.: +1-(587)-966-9384

† These authors contributed equally to this work.

Abstract: Multiple sclerosis (MS) is a chronic, progressive neuroinflammatory disease with a complex pathophysiological background. A variety of diverse factors have been attributed to the propagation of inflammation and neurodegeneration in MS, mainly genetic, immunological, and environmental factors such as vitamin D deficiency, infections, or hormonal disbalance. Recently, the importance of the gut-brain axis for the development of many neurological conditions, including stroke, movement disorders, and neuroinflammatory disorders, has been postulated. The purpose of our paper was to summarize current evidence confirming the role of the gut microbiome in the pathophysiology of MS and related disorders, such as neuromyelitis optica spectrum disorder (NMO-SD). For this aim, we conducted a systematic review of the literature listed in the following databases: Medline, Pubmed, and Scopus, and were able to identify several studies demonstrating the involvement of the gut microbiome in the pathophysiology of MS and NMO-SD. It seems that the most relevant bacteria for the pathophysiology of MS are those belonging to *Pseudomonas*, *Mycoplasma*, *Haemophilus*, *Blautia*, *Dorea*, *Faecalibacterium*, *Methanobrevibacter*, *Akkermansia*, and *Desulfovibrionaceae* genera, while *Clostridium perfringens* and *Streptococcus* have been demonstrated to play a role in the pathophysiology of NMO-SD. Following this line of evidence, there is also some preliminary data supporting the use of probiotics or other agents affecting the microbiome that could potentially have a beneficial effect on MS/NMO-SD symptoms and prognosis. The topic of the gut microbiome in the pathophysiology of MS is therefore relevant since it could be used as a biomarker of disease development and progression as well as a potential disease-modifying therapy.

Keywords: multiple sclerosis; brain-gut axis; gut microbiome; neuromyelitis spectrum disorders



Citation: Dunalska, A.; Saramak, K.; Szejko, N. The Role of Gut Microbiome in the Pathogenesis of Multiple Sclerosis and Related Disorders. *Cells* **2023**, *12*, 1760. <https://doi.org/10.3390/cells12131760>

Academic Editor: Dolores Viña

Received: 2 May 2023

Revised: 15 June 2023

Accepted: 21 June 2023

Published: 30 June 2023



Copyright: © 2023 by the authors. Licensee MDPI, Basel, Switzerland. This article is an open access article distributed under the terms and conditions of the Creative Commons Attribution (CC BY) license (<https://creativecommons.org/licenses/by/4.0/>).

1. Introduction

Multiple sclerosis (MS) is a progressive neuroinflammatory and neurodegenerative disease that usually has an onset in early adulthood and is predominantly found in females [1]. The main pathophysiological mechanism behind the development of MS is the activation of immunity, which was originally attributed to a T-mediated response, although, more recently, lymphocytes B and microglia have also been found to be involved [2]. As for other factors that have an influence on the initiation and propagation of this process, the importance of such causes as genetic contribution [3], low levels of vitamin D [4], infections, especially a history of Epstein–Barr virus exposure [5], smoking [6], and obesity [7], among others, has been shown. One of the risk factors that has been extensively investigated in the last few years, not only in the context of demyelinating disorders but also a variety of other neurological conditions, is the influence of the gut microbiome and microbiota [8]. While the microbiome includes both the host environment and the variety of microorganisms populating it, the term “microbiota” is used to define only microbiota specific to a particular host or disease [9]. The so-called gut-brain axis [10] is a term used to denote the interaction

between the microbiome and the brain. It has been demonstrated that changes in the gut microbiome cause inflammation that affects a variety of systems [11,12], including the central and peripheral nervous systems (CNS) [13–16]. These interactions have been shown to take place at different levels and involve influences on brain signaling [17], gut-projecting spinal afferent neurons [18], gut-projecting afferent neurons [19], the influence of gut microbiota on the immune system [20], and metabolic systems [21], which, in turn, have an impact on the central and peripheral nervous systems. In the recently published systematic review by Tilocca et al. [22], the authors summarized previous evidence regarding different multi-omics techniques such as metagenomics, metatranscriptomics, metaproteomics, and metabolomics used for the investigation of gut-brain axis interactions. We were able to identify several key components of the gut-brain axis: the CNS, the autonomic nervous system, the enteric nervous system, the hypothalamic-pituitary-adrenal axis, and the immune system.

Especially the impact on the immune system has been postulated as the main mechanism of microbiome influence on the development of MS [23]. However, it is still not clear whether changes in the gut microbiome occur prior to the disease onset in the prodromal stage and could have a causal impact on the disease initiation, whether they are a type of biomarker of the disease progression and occur when the disease propagates, or whether they are a direct consequence of the disease-modifying therapies. It is also possible that multiple mechanisms and bidirectional influences have an impact on the gut-brain axis in MS (Figure 1). One of the suggested mechanisms is activation by the infection [24] either viral [25–27], bacterial [27], or fungal [28], that in turn leads to a number of further changes, such as activation of the immune system and changes in the microbiome composition [29]. Another useful approach in this context is offered by metagenomics [30], which comprises both microbiological as well as genetic techniques. As a result, metagenomics enables the identification of DNA specific to particular microorganisms [31].

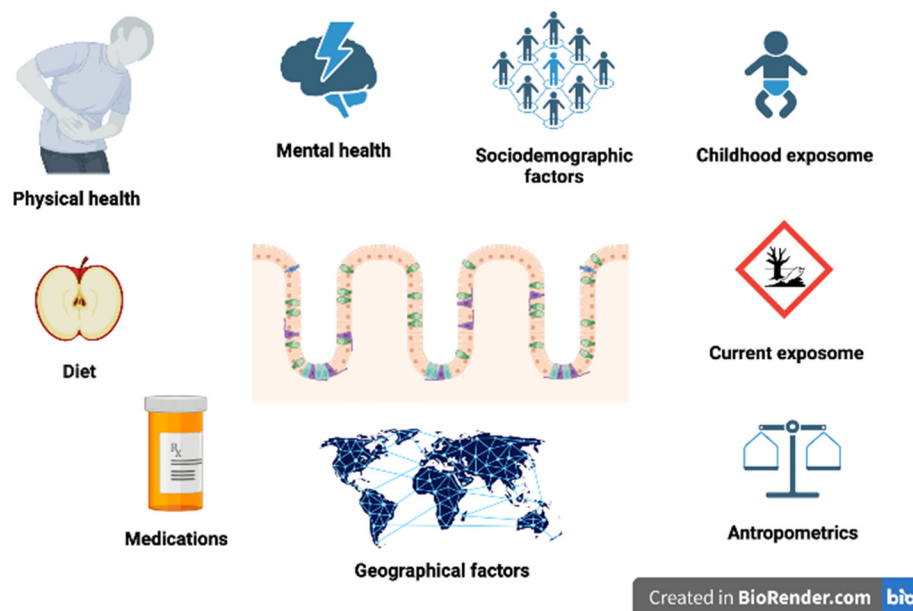


Figure 1. Various environmental factors that have influence on gut microbiome.

The purpose of our paper was to summarize current evidence behind the role of the gut microbiome in the pathophysiology of MS and related disorders. We are also mentioning the potential use of agents that interfere with the composition of the gut microbiome, such as probiotics and fecal transplantation, for the therapy of MS. To identify articles eligible for inclusion, we have searched electronic databases (Pubmed, Medline, and Scopus) with the main focus on original research. We did not use any time restrictions to include the articles.

2. The Role of Gut Microbiome in the Pathogenesis of Multiple Sclerosis

Taking into consideration the fact that the gut microbiota is crucial for the immune system's growth and maturation [32], it is intuitive to expect its contribution to the pathogenesis of MS [33–35].

Animal models provide information that MS-linked microbiota produce factors that precipitate an MS-like autoimmune disease [36]. Molecular mimicry between gut bacterial components and central nervous system (CNS) autoantigens, in concert with gut microbes inducing Th17 cells, acts together to worsen CNS autoimmunity in experimental autoimmune encephalomyelitis (EAE), the most widely used animal model of MS [37]. Therefore, the main mechanism behind the creation of this animal model is based on gut-brain interaction. In the process of developing this model, it has been found that antibiotic administration protected against the disease, which was attributed to Treg- and Th2-cell responses [38].

Following these initial findings, immune cells from mice that received microbiota samples from MS individuals produced less interleukin (IL)-10 than immune cells from mice colonized with healthy samples. This is of particular importance since IL-10 may have a regulatory role in spontaneous CNS autoimmunity [39]. Increased *Streptococcus* concentration, a higher *Firmicutes/Bacteroidetes* ratio, and decreased *Prevotella* concentration are associated with higher disease activity and more abundant intestinal Th17 cells [37]. Proinflammatory responses in human peripheral blood mononuclear cells and in monocolonized mice are related to *Akkermansia muciniphila* and *Acinetobacter calcoaceticus* colonization, which are typical for MS patients [40]. On the other hand, *Parabacteroides distasonis*, which is reduced in MS patients, stimulates anti-inflammatory IL-10 expressing human CD4+CD25+ T cells and IL-10+FoxP3+ Tregs in mice [40]. Microbiota transplantation from MS patients into germ-free mice results in more severe manifestations of EAE compared with mice 'humanized' with microbiota from healthy controls (HC) [40]. Moreover, dysbiosis can modulate immunological responses to the microbiota and affect the integrity of the epithelia that comprise cellular barriers vital for the integrity of the intestine and CNS [41]. In the EAE animal model, increased intestinal permeability, overexpression of the tight junction protein zonulin, alterations in intestinal morphology, increased infiltration of proinflammatory Th1/Th17 cells, and a reduced regulatory T cell number in the gut lamina propria, Peyer's patches, and mesenteric lymph nodes were observed [42]. Germ-free mice are also reported to have greater permeability of the blood-brain barrier (BBB) compared to pathogen-free mice with a normal gut flora [43]. The low-grade microbial translocation to the systemic circulation and ultimately to the brain is a crucial point regarding the contribution of intestinal permeability changes to MS pathophysiology [44]. The change in gut microbiome achieved by exposing germ-free adult mice to a pathogen-free gut microbiota decreased BBB permeability and up-regulated the expression of tight junction proteins [43]. The same study delivered information about the presence of hypermyelinated axons within the prefrontal cortex of germ-free mice, suggesting the role of the microbiota in controlling myelin production in this brain area [43]. In another study by Colpitts et al. [45], they compared gut microbiota composition between acute inflammatory and chronic progressive forms in a murine model of secondary-progressive multiple sclerosis. As a result, the authors found that the mice that developed a severe secondary form of EAE exhibited a dysbiotic gut microbiome when compared with the healthy control mice. The authors also complemented this study with a sub-analysis regarding the influence of antibiotic therapy on the outcomes of the progressive stage of EAE. Interestingly enough, mice receiving antibiotics demonstrated reduced mortality and disease severity.

According to the literature based on studies in humans, specific bacterial taxa are significantly associated with the pathophysiology of MS. In particular, the following bacteria were found to be more abundant in MS patients than controls: *Pseudomonas*, *Mycoplasma*, *Haemophilus*, *Blautia*, *Dorea*, *Faecalibacterium*, *Methanobrevibacter*, *Akkermansia*, and *Desulfovibrionaceae* genera [46–49]. These taxa have been found to be associated with variations in the expression of genes involved in dendritic cell maturation, interferon signaling, and

NF- κ B signaling pathways in circulating T cells and monocytes. It has also been postulated that *Akkermansia*, found more abundantly in MS patients than healthy controls, may be a compensatory response in MS. What is more, progressive MS is uniquely linked to elevated *Enterobacteriaceae* and *Clostridium* g24 FCEY and decreased *Blautia* and *Agathobaculum* colonization [39]. Moreover, Clostridial species associated with MS might be distinct from those broadly associated with other autoimmune conditions [50]. Differences in the microbiome composition between MS patients and healthy controls concern clostridial species belonging to *Clostridia* clusters XIVa and IV and *Bacteroidetes* [50]. As clusters IV and XIVa of the genus *Clostridium* promote Treg cell accumulation and the colonization of mice by a defined mix of *Clostridium* strains is described to provide an environment rich in transforming growth factor- β and affect Foxp3+ Treg numbers, it can alter colon function and disrupt immune homeostasis [51]. In addition, several *Clostridium* species were associated with higher disability scores measured with the expanded disability status scale (EDSS) and fatigue scores [39].

Another important topic is the influence of disease-modifying therapies on the microbiome's composition. MS patients on disease-modifying therapies have been found to have increased fecal concentrations of *Prevotella*, *Sutterella*, and *Akkermansia* and decreased *Sarcina* in comparison to untreated individuals [49,52,53]. Glatiramer acetate treatment is described as being linked to differences in microbiome composition in MS patients, expressed in abundance of *Bacteroidaceae*, *Faecalibacterium*, *Ruminococcus*, *Lactobacillaceae*, *Clostridium*, and other *Clostridiales* [49]. On the other hand, in untreated MS patients, an increase in the *Akkermansia*, *Faecalibacterium*, and *Coprococcus* genera after vitamin D supplementation was observed [49].

Studies also show that manipulations of the gut microbiome through the use of probiotics have a positive effect on the health of patients with MS [54–57]. Administration of probiotics increases the colonization of some taxa known to be depleted in MS, such as *Lactobacillus*, and reduces the abundance of *Akkermansia* and *Blautia*, linked to dysbiosis in MS [56]. Methane metabolism, number of inflammatory monocytes, mean fluorescence intensity (MFI) of CD80 of classical monocytes, and HLA-DR MFI on dendritic cells are also reduced after probiotic intake in MS patients [55]. Moreover, in a healthy population, probiotic administration is linked to decreased expression of the MS risk alleles HLA-DQA1 and HLA-DPB1 [56]. Administration of *Lactobacillus acidophilus*, *Lactobacillus casei*, *Bifidobacterium bifidum*, and *Lactobacillus fermentum* has favorable effects on disability levels assessed with EDSS, parameters of mental health, inflammatory factors, markers of insulin resistance, and HDL- and total-/HDL-cholesterol levels in MS patients [57]. Probiotic supplementation down-regulates gene expression of IL-8 and tumor necrosis factor- α (TNF- α) mRNA in peripheral blood mononuclear cells of patients with MS [57]. It has also been observed that the low-grade inflammation linked to chronic inflammatory diseases is largely combated by nutrients, including nondigestible dietary fibers [58]. Their action is mediated by the gut microbiota, and any microbial change brought on by diet alters host-microbe interactions in a way that either ameliorates or exacerbates the disease, which also applies to MS [57]. What is more, intermittent fasting (IF) ameliorates the clinical course and neurodegenerative changes in EAE [59–61]. IF also increased the diversity of gut bacteria, particularly those belonging to the families of *Lactobacillaceae*, *Bacteroidaceae*, and *Prevotellaceae*. IF reduces the IL-17-producing T cells in the gut while increasing the regulatory T cells [59–61].

The overview of articles discussed in this section is presented in Table 1.

Table 1. An overview of studies investigating the role of gut microbiome in the pathogenesis of multiple sclerosis. Studies are presented in chronological order.

Reference	Number of MS Participants	Methodology	Results
Animal models			
Nouri et al. [42]	NA	Analysis of intestinal permeability in EAE mice	<ol style="list-style-type: none"> 1. Increased intestinal permeability, overexpression of the tight junction protein zonulin and alterations in intestinal morphology in EAE 2. Adoptive transfer to healthy mice of T cells, isolated from EAE-diseased animals, led to intestinal changes similar to those resulting from the immunization procedure
Braniste et al. [43]	NA	<ol style="list-style-type: none"> 1. Assessment of the importance of the intestinal microbiota in the maintenance of BBB integrity in a mouse model. 2. Assessment whether these changes are present during different stages of life. 	<ol style="list-style-type: none"> 1. Germ-free mice displayed increased BBB permeability compared to mice with a normal gut flora. 2. Exposure of germ-free adult mice to a pathogen-free gut microbiota decreased BBB permeability and up-regulated the expression of tight junction proteins. 3. These changes were found to have initiated during gestation and propagated throughout life.
Cekanaviciute et al. [40]	36 (for animal model analysis)	<ol style="list-style-type: none"> 1. Combination of animal model and clinical research 2. Comparison of GM in MS patients and HC 3. Microbiota transplants from MS patients to germ-free mice 	Gut microbiota from MS patients induced more pronounced EAE in mice
Colpitts et al. [45]	45	<ol style="list-style-type: none"> 1. Comparison of GM in EAE and HC 2. Comparison of clinical course after antibiotics administration 	<ol style="list-style-type: none"> 1. EAE mice developed dysbiosis 2. Better prognosis after antibiotic therapy
Berer et al. [52]	47 (for animal model analysis)	<ol style="list-style-type: none"> 1. Transplantation of GM from MS patient to mice with EAE 2. Evaluation of immunological, GM changes in the mice after transplantation 	<ol style="list-style-type: none"> 1. MS derived microbiota induced a significantly higher incidence of autoimmunity 2. The microbial profiles of the colonized mice showed a high intraindividual and temporal stability 3. Immune cells from mouse recipients of MS samples produced less IL-10
Miyauchi et al. [37]	14	<ol style="list-style-type: none"> 3. Change of GM with antibiotics 4. Analysis of MOG-specific response in the gut 	<ol style="list-style-type: none"> 4. Two signals from GM activate autoreactive T cells in the small intestine that respond specifically to MOG 5. After EAE induction, MOG-specific CD4 T cells were detected in the small intestine. 6. <i>Erysipelotrichaceae</i> and <i>Lactobacillus reuteri</i> induced EAE in mice model
Studies in humans			
Miyake et al. [50]	20	Comparison of fecal symptoms between MS and HC	Significant differences between MS and HC when it comes to the following bacterial taxa: clostridial species belonging to <i>Clostridia</i> clusters XIVa and IV and Bacteroidetes.
Cantarel et al. [49]	7	<ol style="list-style-type: none"> 1. Comparison of GM in MS and HC 2. Evaluation of the influence of GA and Vit. D treatment on the GM 	<ol style="list-style-type: none"> 1. The abundance of <i>Faecalibacterium</i> was lower in MS 2. GA therapy led to changes in GM composition in MS subjects 3. Vit. D supplementation led to increase in the 4. <i>Akkermansia</i>, <i>Faecalibacterium</i>, and <i>Coprococcus</i> in MS patients

Table 1. Cont.

Reference	Number of MS Participants	Methodology	Results
Tremlett et al. [47]	18	GM comparison between MS and HC children	MS cases had a significant enrichment in the <i>Desulfovibrionaceae</i> (<i>Bilophila</i> , <i>Desulfovibrio</i> and <i>Christensenellaceae</i>) and depletion in <i>Lachnospiraceae</i> and <i>Ruminococcaceae</i>
Jangi et al. [48]	60	<ol style="list-style-type: none"> 1. 16S rRNA sequencing to compare GM in MS and HC 2. Correlation of GM changes with gene expression 3. Comparison of proliferation and cytokine assays in response to specific microbial stimulation. 4. Sera from MS and HC was collected for ELISA-based techniques to capture serologic activity directed against specific GM. 5. Breath samples from MS and HC were collected to determine breath methane concentrations. 6. Influence of DMT on GM in MS 	<ol style="list-style-type: none"> 1. GM alterations in MS included increases in <i>Methanobrevibacter</i> and <i>Akkermansia</i> and decreases in <i>Butyrivibrio</i> 2. Changes in GM correlated with variations in the expression of genes involved in dendritic cell maturation, interferon signalling and NF-κB signalling pathways in circulating T cells and monocytes 3. Patients on DMT showed increased abundances of <i>Prevotella</i> and <i>Sutterella</i>, and decreased <i>Sarcina</i>, compared with untreated patients. 4. MS patients showed elevated breath methane
Cekanaviciute et al. [40]	71		<ol style="list-style-type: none"> 1. <i>Akkermansia muciniphila</i> and <i>Acinetobacter calcoaceticus</i> increased in MS patients 2. <i>Parabacteroides distasonis</i> decreased in MS patients
Berer et al. [52]	68	Comparison between the GM composition of 34 monozygotic twin pairs discordant for MS	<ol style="list-style-type: none"> 1. No major differences in the overall microbial profiles 2. Significant increase in some taxa such as <i>Akkermansia</i> in untreated MS twins
Kouchaki et al. [57]	60	RCT comparing influence of probiotic on MS course	The use of probiotics had favorable effects on EDSS, parameters of mental health, inflammatory factors, markers of insulin resistance
Tankou et al. [54]	9	Investigation of the effect of VSL3 on the gut microbiome and peripheral immune system function in HC and MS	<ol style="list-style-type: none"> 1. VSL3 administration was associated with increased abundance of many taxa with enriched taxa predominated by <i>Lactobacillus</i>, <i>Streptococcus</i>, and <i>Bifidobacterium</i> species. 2. VSL3 administration induced an anti-inflammatory peripheral immune response
Tankou et al. [56]	9	Administration of probiotic containing <i>Lactobacillus</i> , <i>Bifidobacterium</i> , and <i>Streptococcus</i>	Probiotic administration increased the abundance of several taxa known to be depleted in MS
Cox et al. [39]	199 RRMS, 44 PMS	Sequencing of microbiota in HC, RRMS and PMS patients, correlation of these with clinical biomarkers	<ol style="list-style-type: none"> 1. HC and MS differed when it comes to microbiota composition 2. No differences between RRMS and PMS 3. <i>Clostridium</i> species associated with higher EDSS and fatigue scores

MS—multiple sclerosis, GM—gut microbiome, MOG—myelin oligodendrocyte glycoprotein, HC—healthy controls, RRMS—relapsing and remitting multiple sclerosis, PMS—progressive multiple sclerosis, EAE—experimental autoimmune encephalomyelitis, GA—glatiramer acetate, Vit. D—vitamin D, DMT—disease-modifying therapy, BBB—blood-brain barrier, IL—interleukin, RCT—randomized controlled trial, EDSS—Expanded Disability Status Scale, NA – not available

3. The Role of Gut Microbiome in the Pathogenesis of Neuromyelitis Optica Spectrum Disorders

Neuromyelitis optica spectrum disorders (NMO-SDs) are a group of chronic autoimmune diseases of the CNS [62]. The symptoms of NMO-SDs are caused by demyelinating lesions occurring mainly in the spinal cord and optic nerves [63,64]. The majority of patients are seropositive for autoantibodies (NMO-SD IgG) against aquaporin-4 (AQP4), a water channel expressed in astrocytes. The AQP4-specific autoantibodies are classified as immunoglobulin (Ig)G1, a T cell-dependent Ig subclass [63]. Although great progress has been made to unravel the pathogenesis of NMO-SDs, the environmental triggers underlying the production of NMO-SD IgG remain unclear [63,65].

To date, research has shown that T cells recognizing the epitope of AQP4 display cross-reactivity to homologous peptide sequences of commensal bacteria found in human gut flora [66]. In 2012, Varrin-Doyer et al. conducted the first study using peripheral blood T cells obtained from NMO-SD patients and healthy controls (HC) [66]. Both T cells from NMO-SD patients and HC proliferated to intact AQP or discrete AQP4 peptides. The T cells from NMO-SD patients showed markedly higher proliferation, especially when exposed to the peptide p61-80. The peptide p63-76, in turn, exhibited strong homology to a sequence within the *Clostridium perfringens* adenosine triphosphate-binding cassette (ABC) transporter permease. The T cells from NMO-SD patients also proliferated to this homologous bacterial sequence, showing cross-reactivity and supporting the role of molecular mimicry. Moreover, monocytes from NMO-SD patients produced a greater amount of interleukin (IL)-6, which is responsible for T17 polarization in this group of patients [66]. The paper published by Cree et al. also supports the role of *C. perfringens* in the pathogenesis of NMO-SDs [67]. The stool samples obtained from 16 NMO-SD patients showed a significantly higher concentration of several microbial communities, especially *C. perfringens*, in comparison to the ones obtained from 16 HC. Most of the NMO-SD patients were treated with immunotherapy, mostly rituximab, which could also influence the gut microbiome. In addition, the authors compared these findings with those of 16 MS patients, five of whom were treated with rituximab. Notably, the gut microbiota in NMO-SD and MS patients differed significantly despite treatment with rituximab in both groups [67]. On the other hand, the study conducted by Gong et al. in China revealed the overrepresentation of *Streptococcus* sp. in the fecal microbial composition of the NMO-SD patients [68]. Interestingly, the abundance of *Streptococcus* sp. was positively correlated with disease severity, and the use of immune suppressant medications had a depleting influence on the gut microbiome. Moreover, the patients with NMO-SD showed significant reductions in faecal butyrate, which is believed to have an anti-inflammatory effect [68]. The anti-inflammatory effect of short-chain fatty acids is not limited to the intestinal tract; it also increases the Treg level and inhibits Th17 cell differentiation [68]. The same group from China showed that although in the sigmoid mucosal biopsies collected from 6 NMO-SD patients the diversity of bacterial flora was overall diminished, *Streptococcus* and *Granulicatella* sp. were still amply detected in the samples [69]. Furthermore, through the decreased expression of tight junction proteins, the integrity of the intestinal barrier may be impaired. Additionally, the increased number of plasma cells, macrophages, and mast cells found in the lamina propria suggests inflammatory activation of the gut in patients with NMO-SD. Another study from China supports the aforementioned results, showing an overrepresentation of pathogenic species such as *Streptococcus* and *Flavonifractor* in the stool samples of NMO-SD patients [70]. Zhang et al. characterized the gut microbiota in both AQP4 seropositive and AQP4 seronegative groups of NMO-SD patients separately and compared these findings with the HC [71]. The microbial composition in NMO-SD showed an increased prevalence of *Proteobacteria*, *Bacteroidetes*, and *Firmicutes*, respectively. Furthermore, butyrate-producing species were abundantly represented in HC compared to NMO-SD patients [71]. Pandit et al. investigated the blood and stool samples of 39 Indian patients with NMO-SD [72]. The prevalence of *Clostridium boltae* was significantly higher in the stool samples obtained from AQP4 positive patients compared to seronegative

specimens. *C. boltae* was not detected in the stool samples collected from HC. Moreover, *C. boltae* peptide p 59-71 showed homology with AQP peptide p 92-104. The presence of *C. boltae* correlated with the expression of inflammatory genes associated with B cell chemotaxis as well as Th17 cell activation [72]. Recently, Cheng et al. investigated the role of T follicular helper (Tfh) cells in NMO-SD recurrence and evaluated whether the levels of glycoconjugate deoxycholic acid (GUDCA), a microbiota metabolite, influenced levels of serum C-X-C motif ligand 13 (CXCL13), which reflect the effects of the Tfh cells on B-cell-mediated humoral immunity [73]. The level of GUDCA was higher in patients with NMOSD with low activity, which was positively correlated with CXCL13. The overview of studies presented in this section is presented in Table 2.

Table 2. An overview of studies investigating the role of gut microbiome in the pathogenesis of neuromyelitis optica spectrum disorders.

Reference	Number of NMO-SD Patients	Methodology	Results
Varrin-Doyer et al. [66]	15	Peripheral blood T cells were obtained from 15 NMO patients and 9 HC	T cells from NMO patients showed higher proliferation, especially when exposed to the AQP peptide p61–80, cross reactivity to a sequence within <i>C. perfringens</i> , and T17 polarization.
Cree et al. [67]	16	Stool samples were collected from 16 NMO patients (all AQP4 seropositive), 16 HC and 16 MS patients with similar nutritional intake	There was a statistically significant difference in the abundance of <i>C. perfringens</i> in the stool of NMO patients and HC
Gong et al. [68]	84	Stool samples were obtained from 84 NMO patients and 54 HC.	1. The <i>Streptococcus</i> sp. were overrepresented in NMO patients, which correlated with the disease severity. 2. There was a significant reduction of <i>Faecal butyrate</i> in NMO patients.
Shi et al. [70]	20	Stool samples were obtained from 20 NMO patients and 20 HC	Overrepresentation of the pathogenic species <i>Streptococcus</i> and <i>Flavonifractor</i> in NMO sample
Cui et al. [69]	6	Sigmoid mucosal biopsies were obtained using endoscopy from 6 NMO patients and 5 HC	1. The diversity of bacterial flora in NMO patients was diminished. 2. <i>Streptococcus</i> and <i>Granulicatella</i> sp. were still abundant
Zhang et al. [71]	22	Stool samples were collected from 22 NMO patients (14 AQP seropositive) and 28 HC	1. AQP4+ and AQP4-groups of NMO patients as well as HC showed the prevalence of different bacteria— <i>Proteobacteria</i> , <i>Bacteroidetes</i> and <i>Firmicutes</i> , respectively. 2. Butyrate-producing species were abundantly represented in HC compared to NMO patients.
Pandit et al. [72]	39	Stool and peripheral blood samples were collected from 39 patients with NMO (17 AQP4 seropositive) and 36 HC.	1. The prevalence of <i>C. boltae</i> was significantly higher in AQP4 seropositive patients. <i>C. boltae</i> peptide p59–71 showed homology with AQP peptide p92–104. 2. The presence of <i>C. boltae</i> correlated with the expression of inflammatory genes.

NMO-SD—neuromyelitis spectrum disorder, AQP—aquaporin, HC—healthy controls.

4. Conclusions

The current degree of evidence supports the importance of the gut microbiome in the pathophysiology of MS and related disorders. On the one hand, there are many taxa of bacteria that are found more frequently in patients with MS, but also, disease-modifying therapies used in MS have been shown to change the microbiome composition. One important point that should be considered is whether these changes occur prior to the occurrence of MS or are secondary to the disease itself [74]. It is also possible that genetically determined microbiome changes determine the microbiome composition, which, in turn, leads

to disease progression [75–77]. Another issue is related to the differences between the microbiome, which constitutes both the host environment as well as all microorganisms encountered in it, and the microbiota, which is limited to microorganisms only [78]. In addition, it is still not clear whether the totality of the patient's microbiome is equally important as microbiomes in different locations, such as the gut, oral [79], nasal cavity [80], pulmonary tract [81], or vagina [82]. This is of great importance since the environment is the single most important determinant of microbiota composition [83]. Another topic that still needs exploration is the influence of different environmental factors on the microbiome composition and its interaction with MS pathophysiology. Previous studies have demonstrated that dietary changes [84], stressors [85], substance abuse [86], and chronic illnesses [87] co-existing with MS and pharmacotherapy, especially antibiotics [88], influence the microbiome composition.

There are several limitations to our review: (i) although we used a detailed search strategy, it is still possible that we did not include some important studies, especially the ones posterior to publication of our review; (ii) another limitation is related to the inclusion of articles that are written only in English; (iii) finally, we mainly focused on the microbiome in our review; however, it is highly dependent on environmental factors [89], especially diet, which also plays an important role in the development of MS [90].

It can therefore be concluded that although there are some preliminary data suggesting that the gut microbiome plays an important role in the pathophysiology of MS, the microbiome composition is determined by too many confounding factors. Future studies should be focused on overcoming this limitation, mainly using methodologies derived from population genetics, such as Mendelian randomization [91].

Author Contributions: Conceptualization, A.D., K.S. and N.S.; methodology, A.D., K.S. and N.S.; investigation, A.D., K.S. and N.S.; resources, A.D., K.S. and N.S.; writing—original draft preparation, A.D., K.S. and N.S.; writing—review and editing, A.D., K.S. and N.S.; visualization, A.D., K.S. and N.S.; supervision, N.S. All authors have read and agreed to the published version of the manuscript.

Funding: This research received no external funding.

Institutional Review Board Statement: Not applicable.

Informed Consent Statement: Not applicable.

Data Availability Statement: Not applicable.

Conflicts of Interest: N.S. received support from Biogen.

References

1. Ward, M.; Goldman, M.D. Epidemiology and Pathophysiology of Multiple Sclerosis. *Contin. Lifelong Learn. Neurol.* **2022**, *28*, 988–1005. [\[CrossRef\]](#) [\[PubMed\]](#)
2. Dendrou, C.A.; Fugger, L.; Friese, M.A. Immunopathology of multiple sclerosis. *Nat. Rev. Immunol.* **2015**, *15*, 545–558. [\[CrossRef\]](#) [\[PubMed\]](#)
3. Goris, A.; Vandebergh, M.; McCauley, J.L.; Saarela, J.; Cotsapas, C. Genetics of multiple sclerosis: Lessons from polygenicity. *Lancet Neurol.* **2022**, *21*, 830–842. [\[CrossRef\]](#) [\[PubMed\]](#)
4. Pierrot-Deseilligny, C.; Souberbielle, J.-C. Vitamin D and multiple sclerosis: An update. *Mult. Scler. Relat. Disord.* **2017**, *14*, 35–45. [\[CrossRef\]](#) [\[PubMed\]](#)
5. Jakimovski, D.; Weinstock-Guttman, B.; Ramanathan, M.; Dwyer, M.G.; Zivadinov, R. Infections, Vaccines and Autoimmunity: A Multiple Sclerosis Perspective. *Vaccines* **2020**, *8*, 50. [\[CrossRef\]](#)
6. Arneth, B. Multiple Sclerosis and Smoking. *Am. J. Med.* **2020**, *133*, 783–788. [\[CrossRef\]](#)
7. Correale, J.; Marrodan, M. Multiple sclerosis and obesity: The role of adipokines. *Front. Immunol.* **2022**, *13*, 1038393. [\[CrossRef\]](#)
8. Sharon, G.; Sampson, T.R.; Geschwind, D.H.; Mazmanian, S.K. The Central Nervous System and the Gut Microbiome. *Cell* **2016**, *167*, 915–932. [\[CrossRef\]](#)
9. Shanahan, F.; Ghosh, T.S.; O'Toole, P.W. The Healthy Microbiome—What Is the Definition of a Healthy Gut Microbiome? *Gastroenterology* **2021**, *160*, 483–494. [\[CrossRef\]](#)
10. Agirman, G.; Yu, K.B.; Hsiao, E.Y. Signaling inflammation across the gut-brain axis. *Science* **2021**, *374*, 1087–1092. [\[CrossRef\]](#)
11. Clemente, J.C.; Manasson, J.; Scher, J.U. The role of the gut microbiome in systemic inflammatory disease. *BMJ* **2018**, *360*, j5145. [\[CrossRef\]](#)

12. Tilg, H.; Zmora, N.; Adolph, T.E.; Elinav, E. The intestinal microbiota fuelling metabolic inflammation. *Nat. Rev. Immunol.* **2019**, *20*, 40–54. [\[CrossRef\]](#)
13. Alam, R.; Abdolmaleky, H.M.; Zhou, J.R. Microbiome, inflammation, epigenetic alterations, and mental diseases. *Am. J. Med. Genet. B Neuropsychiatr. Genet.* **2017**, *174*, 651–660. [\[CrossRef\]](#)
14. Lin, L.; Zheng, L.J.; Zhang, L.J. Neuroinflammation, Gut Microbiome, and Alzheimer's Disease. *Mol. Neurobiol.* **2018**, *55*, 8243–8250. [\[CrossRef\]](#)
15. Butler, M.J.; Perrini, A.A.; Eckel, L.A. The Role of the Gut Microbiome, Immunity, and Neuroinflammation in the Pathophysiology of Eating Disorders. *Nutrients* **2021**, *13*, 500. [\[CrossRef\]](#)
16. Bostick, J.W.; Schonhoff, A.M.; Mazmanian, S.K. Gut microbiome-mediated regulation of neuroinflammation. *Curr. Opin. Immunol.* **2022**, *76*, 102177. [\[CrossRef\]](#)
17. Osadchiy, V.; Martin, C.R.; Mayer, E.A. The gut-brain axis and the microbiome: Mechanisms and clinical implications. *Clin. Gastroenterol. Hepatol.* **2019**, *17*, 322–332. [\[CrossRef\]](#)
18. Gershon, M.D.; Margolis, K.G. The gut, its microbiome, and the brain: Connections and communications. *J. Clin. Investig.* **2021**, *131*, e143768. [\[CrossRef\]](#)
19. Berthoud, H.-R.; Neuhuber, W.L. Functional and chemical anatomy of the afferent vagal system. *Auton. Neurosci.* **2000**, *85*, 1–17. [\[CrossRef\]](#)
20. Takiishi, T.; Fenero, C.I.M.; Câmara, N.O.S. Intestinal barrier and gut microbiota: Shaping our immune responses throughout life. *Tissue Barriers* **2017**, *5*, e1373208. [\[CrossRef\]](#)
21. Wu, J.; Wang, K.; Wang, X.; Pang, Y.; Jiang, C. The role of the gut microbiome and its metabolites in metabolic diseases. *Protein Cell* **2020**, *12*, 360–373. [\[CrossRef\]](#) [\[PubMed\]](#)
22. Tilocca, B.; Pieroni, L.; Soggiu, A.; Britti, D.; Bonizzi, L.; Roncada, P.; Greco, V. Gut–Brain Axis and Neurodegeneration: State-of-the-Art of Meta-Omics Sciences for Microbiota Characterization. *Int. J. Mol. Sci.* **2020**, *21*, 4045. [\[CrossRef\]](#) [\[PubMed\]](#)
23. Preiningerova, J.L.; Zakostelska, Z.J.; Srinivasan, A.; Ticha, V.; Kovarova, I.; Kleinova, P.; Tlaskalova-Hogenova, H.; Havrdova, E.K. Multiple Sclerosis and Microbiome. *Biomolecules* **2022**, *12*, 433. [\[CrossRef\]](#) [\[PubMed\]](#)
24. Perlejewski, K.; Bukowska-Oško, I.; Nakamura, S.; Motooka, D.; Stokowy, T.; Płoski, R.; Rydzanicz, M.; Zakrzewska-Pniewska, B.; Podlecka-Piętowska, A.; Nojszewska, M.; et al. Metagenomic Analysis of Cerebrospinal Fluid from Patients with Multiple Sclerosis. *Adv. Exp. Med. Biol.* **2016**, *935*, 89–98. [\[CrossRef\]](#)
25. Bjornevik, K.; Cortese, M.; Healy, B.C.; Kuhle, J.; Mina, M.J.; Leng, Y.; Elledge, S.J.; Niebuhr, D.W.; Scher, A.I.; Munger, K.L.; et al. Longitudinal analysis reveals high prevalence of Epstein-Barr virus associated with multiple sclerosis. *Science* **2022**, *375*, 296–301. [\[CrossRef\]](#)
26. Tarlinton, R.E.; Martynova, E.; Rizvanov, A.A.; Khaiboullina, S.; Verma, S. Role of Viruses in the Pathogenesis of Multiple Sclerosis. *Viruses* **2020**, *12*, 643. [\[CrossRef\]](#)
27. Marrodan, M.; Alessandro, L.; Farez, M.F.; Correale, J. The role of infections in multiple sclerosis. *Mult. Scler. J.* **2019**, *25*, 891–901. [\[CrossRef\]](#)
28. Pisa, D.; Alonso, R.; Jiménez-Jiménez, F.J.; Carrasco, L. Fungal infection in cerebrospinal fluid from some patients with multiple sclerosis. *Eur. J. Clin. Microbiol. Infect. Dis.* **2013**, *32*, 795–801. [\[CrossRef\]](#)
29. Yuan, S.; Xiong, Y.; Larsson, S.C. An atlas on risk factors for multiple sclerosis: A Mendelian randomization study. *J. Neurol.* **2020**, *268*, 114–124. [\[CrossRef\]](#)
30. Wang, D. Metagenomics Databases for Bacteria. *Methods Mol. Biol.* **2023**, *2649*, 55–67. [\[CrossRef\]](#)
31. Jovel, J.; O'Keefe, S.; Patterson, J.; Bording-Jorgensen, M.; Wang, W.; Mason, A.L.; Warren, K.G.; Wong, G.K.-S. Cerebrospinal Fluid in a Small Cohort of Patients with Multiple Sclerosis Was Generally Free of Microbial DNA. *Front. Cell. Infect. Microbiol.* **2017**, *6*, 198. [\[CrossRef\]](#)
32. Bäckhed, F.; Roswall, J.; Peng, Y.; Feng, Q.; Jia, H.; Kovatcheva-Datchary, P.; Li, Y.; Xia, Y.; Xie, H.; Zhong, H.; et al. Dynamics and Stabilization of the Human Gut Microbiome during the First Year of Life. *Cell Host Microbe* **2015**, *17*, 690–703. [\[CrossRef\]](#)
33. Mahad, D.H.; Trapp, B.D.; Lassmann, H. Pathological mechanisms in progressive multiple sclerosis. *Lancet Neurol.* **2015**, *14*, 183–193. [\[CrossRef\]](#)
34. Hemmer, B.; Kerschensteiner, M.; Korn, T. Role of the innate and adaptive immune responses in the course of multiple sclerosis. *Lancet Neurol.* **2015**, *14*, 406–419. [\[CrossRef\]](#)
35. Cryan, J.F.; O'Riordan, K.J.; Sandhu, K.; Peterson, V.; Dinan, T.G. The gut microbiome in neurological disorders. *Lancet Neurol.* **2020**, *19*, 179–194. [\[CrossRef\]](#)
36. Takewaki, D.; Yamamura, T. Gut microbiome research in multiple sclerosis. *Neurosci. Res.* **2021**, *168*, 28–31. [\[CrossRef\]](#)
37. Miyauchi, E.; Kim, S.W.; Suda, W.; Kawasumi, M.; Onawa, S.; Taguchi-Atarashi, N.; Morita, H.; Taylor, T.D.; Hattori, M.; Ohn, H. Gut microorganisms act together to exacerbate inflammation in spinal cords. *Nature* **2020**, *585*, 102–106. [\[CrossRef\]](#)
38. Wekerle, H. Brain Autoimmunity and Intestinal Microbiota: 100 Trillion Game Changers. *Trends Immunol.* **2017**, *38*, 483–497. [\[CrossRef\]](#)
39. Cox, L.M.; Maghzi, A.H.; Liu, S.; Tankou, S.K.; Dhang, F.H.; Willocq, V.; Song, A.; Wasén, C.; Tauhid, S.; Chu, R.; et al. Gut Microbiome in Progressive Multiple Sclerosis. *Ann. Neurol.* **2021**, *89*, 1195–1211. [\[CrossRef\]](#)

40. Cekanaviciute, E.; Yoo, B.B.; Runia, T.F.; Debelius, J.W.; Singh, S.; Nelson, C.A.; Kanner, R.; Bencosme, Y.; Lee, Y.K.; Hauser, S.L.; et al. Gut bacteria from multiple sclerosis patients modulate human T cells and exacerbate symptoms in mouse models. *Proc. Natl. Acad. Sci. USA* **2017**, *114*, 10713–10718. [\[CrossRef\]](#)
41. Ochoa-Repáraz, J.; Kirby, T.O.; Kasper, L.H. The Gut Microbiome and Multiple Sclerosis. *Cold Spring Harb. Perspect. Med.* **2018**, *8*, a029017. [\[CrossRef\]](#) [\[PubMed\]](#)
42. Nouri, M.; Bredberg, A.; Weström, B.; Lavasani, S. Intestinal Barrier Dysfunction Develops at the Onset of Experimental Autoimmune Encephalomyelitis, and Can Be Induced by Adoptive Transfer of Auto-Reactive T Cells. *PLoS ONE* **2014**, *9*, e106335. [\[CrossRef\]](#) [\[PubMed\]](#)
43. Braniste, V.; Al-Asmakh, M.; Kowal, C.; Anuar, F.; Abbaspour, A.; Tóth, M.; Korecka, A.; Bakocevic, N.; Ng, L.G.; Kundu, P.; et al. The gut microbiota influences blood-brain barrier permeability in mice. *Sci. Transl. Med.* **2014**, *6*, 263ra158. [\[CrossRef\]](#) [\[PubMed\]](#)
44. Buscarinu, M.C.; Fornasiero, A.; Romano, S.; Ferraldeschi, M.; Mechelli, R.; Reniè, R.; Morena, E.; Romano, C.; Pellicciari, G.; Landi, A.C.; et al. The Contribution of Gut Barrier Changes to Multiple Sclerosis Pathophysiology. *Front. Immunol.* **2019**, *10*, 1916. [\[CrossRef\]](#)
45. Colpitts, S.L.; Kasper, E.J.; Keever, A.; Liljenberg, C.; Kirby, T.; Magori, K.; Kasper, L.H.; Ochoa-Repáraz, J. A bidirectional association between the gut microbiota and CNS disease in a biphasic murine model of multiple sclerosis. *Gut Microbes* **2017**, *8*, 561–573. [\[CrossRef\]](#)
46. Mirza, A.; Mao-Draayer, Y. The gut microbiome and microbial translocation in multiple sclerosis. *Clin. Immunol.* **2017**, *183*, 213–224. [\[CrossRef\]](#)
47. Tremlett, H.; Fadrosch, D.W.; Faruqi, A.A.; Zhu, F.; Hart, J.; Roalstad, S.; Graves, J.; Lynch, S.; Waubant, E.; US Network of Pediatric MS Centers. Gut microbiota in early pediatric multiple sclerosis: A case–control study. *Eur. J. Neurol.* **2016**, *23*, 1308–1321. [\[CrossRef\]](#)
48. Jangi, S.; Gandhi, R.; Cox, L.M.; Li, N.; von Glehn, F.; Yan, R.; Patel, B.; Mazzola, M.A.; Liu, S.; Glanz, B.L.; et al. Alterations of the human gut microbiome in multiple sclerosis. *Nat. Commun.* **2016**, *7*, 12015. [\[CrossRef\]](#)
49. Cantarel, B.L.; Waubant, E.; Chehoud, C.; Kuczynski, J.; DeSantis, T.Z.; Warrington, J.; Venkatesan, A.; Fraser, C.M.; Mowry, E.M. Gut Microbiota in Multiple Sclerosis: Possible Influence of Immunomodulators. *J. Investig. Med.* **2015**, *63*, 729–734. [\[CrossRef\]](#)
50. Miyake, S.; Kim, S.; Suda, W.; Oshima, K.; Nakamura, M.; Matsuoka, T.; Chihara, N.; Tomita, A.; Sato, W.; Kim, S.-W.; et al. Dysbiosis in the Gut Microbiota of Patients with Multiple Sclerosis, with a Striking Depletion of Species Belonging to Clostridia XIVa and IV Clusters. *PLoS ONE* **2015**, *10*, e0137429. [\[CrossRef\]](#)
51. Atarashi, K.; Tanoue, T.; Shima, T.; Imaoka, A.; Kuwahara, T.; Momose, Y.; Cheng, G.; Yamasaki, S.; Saito, T.; Ohba, Y.; et al. Induction of colonic regulatory T cells by indigenous clostridium species. *Science* **2011**, *331*, 337–341. [\[CrossRef\]](#)
52. Berer, K.; Gerdes, L.A.; Cekanaviciute, E.; Jia, X.; Xiao, L.; Xia, Z.; Liu, C.; Klotz, L.; Stauffer, U.; Baranzini, S.E.; et al. Gut microbiota from multiple sclerosis patients enables spontaneous autoimmune encephalomyelitis in mice. *Proc. Natl. Acad. Sci. USA* **2017**, *114*, 10719–10724. [\[CrossRef\]](#)
53. Pilotto, S.; Zoledziwska, M.; Fenu, G.; Cocco, E.; Lorefice, L. Disease-modifying therapy for multiple sclerosis: Implications for gut microbiota. *Mult. Scler. Relat. Disord.* **2023**, *73*, 104671. [\[CrossRef\]](#)
54. Tankou, S.K.; Regev, K.; Healy, B.C.; Cox, L.M.; Tjon, E.; Kivisakk, P.; Vanande, I.P.; Cook, S.; Gandhi, R.; Glanz, B.; et al. Investigation of probiotics in multiple sclerosis. *Mult. Scler. J.* **2018**, *24*, 58–63. [\[CrossRef\]](#)
55. Atabati, H.; Yazdanpanah, E.; Mortazavi, H.; Bajestani, S.G.; Raoofi, A.; Esmaeili, S.-A.; Khaledi, A.; Saburi, E.; Afshari, J.T.; Sathyapalan, T.; et al. Immunoregulatory Effects of Tolerogenic Probiotics in Multiple Sclerosis. *Adv. Exp. Med. Biol.* **2021**, *1286*, 87–105. [\[CrossRef\]](#)
56. Tankou, S.K.; Regev, K.; Healy, B.C.; Tjon, E.; Laghi, L.; Cox, L.M.; Kivisakk, P.; Pierre, I.V.; Hrishikesh, L.; Gandhi, R.; et al. A probiotic modulates the microbiome and immunity in multiple sclerosis. *Ann. Neurol.* **2018**, *83*, 1147–1161. [\[CrossRef\]](#)
57. Kouchaki, E.; Tamtaji, O.R.; Salami, M.; Bahmani, F.; Kakhaki, R.D.; Akbari, E.; Tajabadi-Ebrahimi, M.; Jafari, P.; Asemi, Z. Clinical and metabolic response to probiotic supplementation in patients with multiple sclerosis: A randomized, double-blind, placebo-controlled trial. *Clin. Nutr.* **2016**, *36*, 1245–1249. [\[CrossRef\]](#)
58. Fritsch, J.; Garces, L.; Quintero, M.A.; Pignac-Kobinger, J.; Santander, A.M.; Fernández, I.; Ban, Y.J.; Kwon, D.; Phillips, M.C.; Knight, K.; et al. Low-Fat, High-Fiber Diet Reduces Markers of Inflammation and Dysbiosis and Improves Quality of Life in Patients with Ulcerative Colitis. *Clin. Gastroenterol. Hepatol.* **2020**, *19*, 1189–1199.e30. [\[CrossRef\]](#)
59. Riccio, P.; Rossano, R. Diet, Gut Microbiota, and Vitamins D + A in Multiple Sclerosis. *Neurotherapeutics* **2018**, *15*, 75–91. [\[CrossRef\]](#)
60. Morales-Suarez-Varela, M.; Sánchez, E.C.; Peraíta-Costa, I.; Llopis-Morales, A.; Soriano, J.M. Intermittent Fasting and the Possible Benefits in Obesity, Diabetes, and Multiple Sclerosis: A Systematic Review of Randomized Clinical Trials. *Nutrients* **2021**, *13*, 3179. [\[CrossRef\]](#)
61. Cignarella, F.; Cantoni, C.; Ghezzi, L.; Salter, A.; Dorsett, Y.; Chen, L.; Phillips, D.; Weinstock, G.M.; Fontana, L.; Cross, A.H.; et al. Intermittent Fasting Confers Protection in CNS Auto-immunity by Altering the Gut Microbiota. *Cell Metab.* **2018**, *27*, 1222–1235.e6. [\[CrossRef\]](#) [\[PubMed\]](#)
62. Wingerchuk, D.M.; Banwell, B.; Bennett, J.L.; Cabre, P.; Carroll, W.; Chitnis, T.; De Seze, J.; Fujihara, K.; Greenberg, B.; Jacob, A.; et al. International consensus diagnostic criteria for neuromyelitis optica spectrum disorders. *Neurology* **2015**, *85*, 177–189. [\[CrossRef\]](#) [\[PubMed\]](#)

63. Jarius, S.; Ruprecht, K.; Wildemann, B.; Kuempfel, T.; Ringelstein, M.; Geis, C.; Kleiter, I.; Kleinschnitz, C.; Berthele, A.; Brettschneider, J.; et al. Contrasting disease patterns in seropositive and seronegative neuromyelitis optica: A multicentre study of 175 patients. *J. Neuroinflamm.* **2012**, *9*, 14. [\[CrossRef\]](#)
64. Kleiter, I.; Gahlen, A.; Borisow, N.; Fischer, K.; Wernecke, K.-D.; Wegner, B.; Hellwig, K.; Pache, F.; Ruprecht, K.; Havla, J.; et al. Neuromyelitis optica: Evaluation of 871 attacks and 1153 treatment courses. *Ann. Neurol.* **2015**, *79*, 206–216. [\[CrossRef\]](#) [\[PubMed\]](#)
65. Melamed, E.; Levy, M.; Waters, P.J.; Sato, D.K.; Bennett, J.L.; John, G.R.; Hooper, D.C.; Saiz, A.; Bar-Or, A.; Kim, H.J. Update on biomarkers in neuromyelitis optica. *Neurol. Neuroimmunol. Neuroinflamm.* **2015**, *2*, 134. Available online: <https://nn.neurology.org/content/2/4/e134> (accessed on 21 April 2023). [\[CrossRef\]](#)
66. Varrin-Doyer, M.; Spencer, C.M.; Schulze-Toppoff, U.; Nelson, P.A.; Stroud, R.M.; Cree, B.A.C.; Zamvil, S.S. Aquaporin 4-specific T cells in neuromyelitis optica exhibit a Th17 bias and recognize *Clostridium* ABC transporter. *Ann. Neurol.* **2012**, *72*, 53–64. [\[CrossRef\]](#)
67. Cree, B.A.C.; Bs, C.M.S.; Varrin-Doyer, M.; Baranzini, S.E.; Zamvil, S.S. Gut microbiome analysis in neuromyelitis optica reveals overabundance of *Clostridium perfringens*. *Ann. Neurol.* **2016**, *80*, 443–447. [\[CrossRef\]](#)
68. Gong, J.; Qiu, W.; Zeng, Q.; Liu, X.; Sun, X.; Li, H.; Yang, Y.; Wu, A.; Bao, J.; Wang, Y.; et al. Lack of short-chain fatty acids and overgrowth of opportunistic pathogens define dysbiosis of neuromyelitis optica spectrum disorders: A Chinese pilot study. *Mult. Scler. J.* **2018**, *25*, 1316–1325. [\[CrossRef\]](#)
69. Cui, C.; Tan, S.; Tao, L.; Gong, J.; Chang, Y.; Wang, Y.; Fan, P.; He, D.; Ruan, Y.; Qiu, W. Intestinal Barrier Breakdown and Mucosal Microbiota Disturbance in Neuromyelitis Optical Spectrum Disorders. *Front. Immunol.* **2020**, *11*, 2101. [\[CrossRef\]](#)
70. Shi, Z.; Qiu, Y.; Wang, J.; Fang, Y.; Zhang, Y.; Chen, H.; Du, Q.; Zhao, Z.; Yan, C.; Yang, M.; et al. Dysbiosis of gut microbiota in patients with neuromyelitis optica spectrum disorders: A cross sectional study. *J. Neuroimmunol.* **2019**, *339*, 577126. [\[CrossRef\]](#)
71. Zhang, J.; Xu, Y.-F.; Wu, L.; Li, H.-F.; Wu, Z.-Y. Characteristic of gut microbiota in southeastern Chinese patients with neuromyelitis optica spectrum disorders. *Mult. Scler. Relat. Disord.* **2020**, *44*, 102217. [\[CrossRef\]](#)
72. Pandit, L.; Cox, L.M.; Malli, C.; D’Cunha, A.; Rooney, T.; Lokhande, H.; Willocq, V.; Saxena, S.; Chitnis, T. *Clostridium bolteae* is elevated in neuromyelitis optica spectrum disorder in India and shares sequence similarity with AQP4. *Neurol. Neuroimmunol. Neuroinflamm.* **2020**, *8*, e907. [\[CrossRef\]](#)
73. Cheng, X.; Zhou, L.; Li, Z.; Shen, S.; Zhao, Y.; Liu, C.; Zhong, X.; Chang, Y.; Kermode, A.G.; Qiu, W. Gut Microbiome and Bile Acid Metabolism Induced the Activation of CXCR5+ CD4+ T Follicular Helper Cells to Participate in Neuromyelitis Optica Spectrum Disorder Recurrence. *Front. Immunol.* **2022**, *13*, 827865. [\[CrossRef\]](#)
74. Navarro-López, V.; Méndez-Miralles, M.Á.; Vela-Yebra, R.; Fries-Ramos, A.; Sánchez-Pellicer, P.; Ruzafa-Costas, B.; Núñez-Delegido, E.; Gómez-Gómez, H.; Chumillas-Lidón, S.; Picó-Monllor, J.A.; et al. Article Gut Microbiota as a Potential Predictive Biomarker in Relapsing-Remitting Multiple Sclerosis. *Genes* **2022**, *13*, 930. [\[CrossRef\]](#)
75. Cox, L.M.; Weiner, H.L. The microbiome requires a genetically susceptible host to induce central nervous system autoimmunity. *Proc. Natl. Acad. Sci. USA* **2020**, *117*, 27764–27766. [\[CrossRef\]](#)
76. Maglione, A.; Zuccalà, M.; Tosi, M.; Clerico, M.; Rolla, S. Host Genetics and Gut Microbiome: Perspectives for Multiple Sclerosis. *Genes* **2021**, *12*, 1181. [\[CrossRef\]](#)
77. Elsayed, N.S.; Valenzuela, R.K.; Kitchner, T.; Le, T.; Mayer, J.; Tang, Z.Z.; Bayanagari, V.R.; Lu, Q.; Aston, P.; Anantharaman, K.; et al. Association Between Polygenic Risk Score And Gut Microbiome Of Multiple Sclerosis. *bioRxiv* **2022**. [\[CrossRef\]](#)
78. Berg, G.; Rybakova, D.; Fischer, D.; Cernava, T.; Vergès, M.-C.C.; Charles, T.; Chen, X.; Cocolin, L.; Eversole, K.; Corral, G.H.; et al. Microbiome definition re-visited: Old concepts and new challenges. *Microbiome* **2020**, *8*, 103. [\[CrossRef\]](#)
79. Zangeneh, Z.; Abdi-Ali, A.; Khamooshian, K.; Alvandi, A.; Abiri, R. Bacterial variation in the oral microbiota in multiple sclerosis patients. *PLoS ONE* **2021**, *16*, e0260384. [\[CrossRef\]](#)
80. Gioacchini, F.M.; Ferlito, S.; Ralli, M.; Scarpa, A.; La Mantia, I.; Re, M.; Romani, L.; Di Stadio, A. Nasal Microbiota and Neuroinflammation: Relationship between Nasal Flora and Multiple Sclerosis Onset/Progression. *Life* **2022**, *12*, 2043. [\[CrossRef\]](#)
81. Montague-Cardoso, K. Lung microbiota and MS. *Nat. Neurosci.* **2022**, *25*, 404. [\[CrossRef\]](#) [\[PubMed\]](#)
82. Holdcroft, A.M.; Ireland, D.J.; Payne, M.S. The Vaginal Microbiome in Health and Disease—What Role Do Common Intimate Hygiene Practices Play? *Microorganisms* **2023**, *11*, 298. [\[CrossRef\]](#) [\[PubMed\]](#)
83. Hasan, N.; Yang, H. Factors affecting the composition of the gut microbiota, and its modulation. *PeerJ* **2019**, *7*, e7502. [\[CrossRef\]](#) [\[PubMed\]](#)
84. Singh, R.K.; Chang, H.-W.; Yan, D.; Lee, K.M.; Ucmak, D.; Wong, K.; Abrouk, M.; Farahnik, B.; Nakamura, M.; Zhu, T.H.; et al. Influence of diet on the gut microbiome and implications for human health. *J. Transl. Med.* **2017**, *15*, 73. [\[CrossRef\]](#) [\[PubMed\]](#)
85. Madison, A.; Kiecolt-Glaser, J.K. Stress, depression, diet, and the gut microbiota: Human–bacteria interactions at the core of psychoneuroimmunology and nutrition. *Curr. Opin. Behav. Sci.* **2019**, *28*, 105–110. [\[CrossRef\]](#)
86. Russell, J.T.; Zhou, Y.; Weinstock, G.M.; Bubier, J.A. The Gut Microbiome and Substance Use Disorder. *Front. Neurosci.* **2021**, *15*, 1134. [\[CrossRef\]](#)
87. Vijay, A.; Valdes, A.M. Role of the gut microbiome in chronic diseases: A narrative review. *Eur. J. Clin. Nutr.* **2021**, *76*, 489–501. [\[CrossRef\]](#)
88. Ramirez, J.; Guarner, F.; Bustos Fernandez, L.; Maruy, A.; Sdepanian, V.L.; Cohen, H. Antibiotics as Major Disruptors of Gut Micro-biota. *Front. Cell. Infect. Microbiol.* **2020**, *10*, 731. [\[CrossRef\]](#)

89. Ahn, J.; Hayes, R.B. Environmental Influences on the Human Microbiome and Implications for Noncommunicable Disease. *Annu. Rev. Public Health* **2021**, *42*, 277–292. [[CrossRef](#)]
90. Stoiloudis, P.; Kesidou, E.; Bakirtzis, C.; Sintila, S.A.; Konstantinidou, N.; Boziki, M.; Grigoriadis, N. The Role of Diet and Interventions on Multiple Sclerosis: A Review. *Nutrients* **2022**, *14*, 1150. [[CrossRef](#)]
91. Sanderson, E.; Glymour, M.M.; Holmes, M.V.; Kang, H.; Morrison, J.; Munafò, M.R.; Palmer, T.; Schooling, C.M.; Wallace, C.; Zhao, Q.; et al. Mendelian randomization. *Nat. Rev. Methods Prim.* **2022**, *2*, 6. [[CrossRef](#)]

Disclaimer/Publisher's Note: The statements, opinions and data contained in all publications are solely those of the individual author(s) and contributor(s) and not of MDPI and/or the editor(s). MDPI and/or the editor(s) disclaim responsibility for any injury to people or property resulting from any ideas, methods, instructions or products referred to in the content.