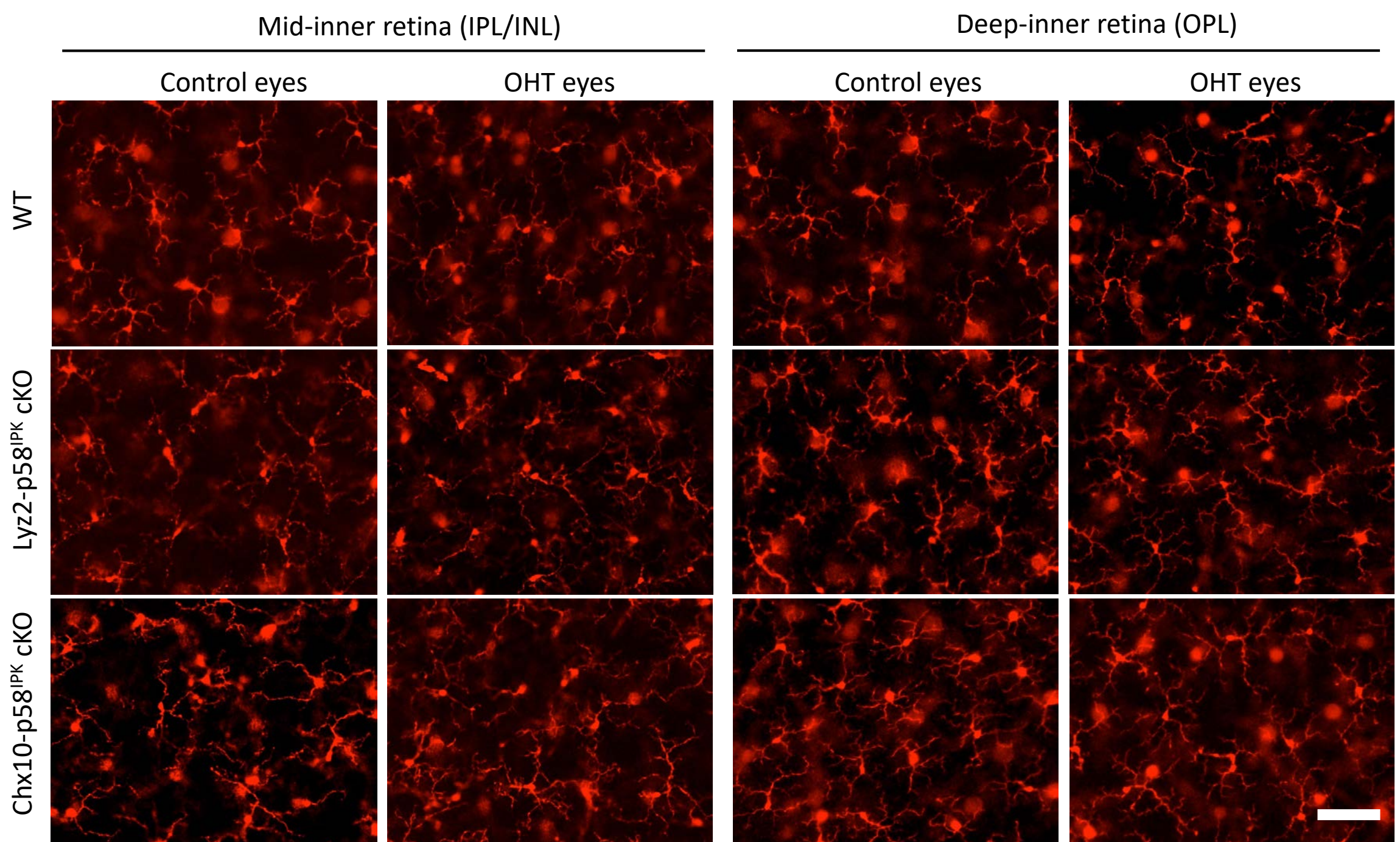


Supplemental Figure S1. Validation of cell-specific cre expression in Lyz2-p58IPK cKO and Chx10-p58IPK cKO lines. Both Lyz2 cKO-p58IPK and Chx10-p58IPK cKO mice lines were crossed with the mTmG reporter line in which Tomato (red) is constitutively expressed. When cre-recombinase is expressed, Tomato expression is halted, and GFP (green) expression begins. **(A-C)** Retinal sections from Lyz2-p58IPK cKO, mTmG mice show GFP expression in macrophages (arrows) in the choroid. **(D-F)** Robust GFP expression in macrophages in the spleen of Lyz2-p58IPK cKO, mTmG mice. **(G&H)** Retinal wholemounts from Chx10-p58IPK cKO, mTmG mice show GFP expression in vast majority of retinal cells throughout the retina, with a significant minority of Tomato expressing cells including vascular cells. Scale bar = 100 μm.



Supplemental Figure S2. Effect of increased IOP on Iba1-positive cells in deep retinal layers in WT, Lyz2-p58^{IPK} cKO, and Chx10-p58^{IPK} cKO mice. Representative images of retinal wholemounts with immunofluorescence staining for Iba1 in the inner plexiform layer/inner nuclear layer (IPL/INL) and outer plexiform layer (OPL). There is no apparent increase in the overall number of Iba1-positive cells (red), nor in the number of activated Iba1-positive cells, in OHT eyes versus control eyes. Scale bar = 50μm.