

Figure S1: Single cell trace analysis of different genes was performed using Monocle.

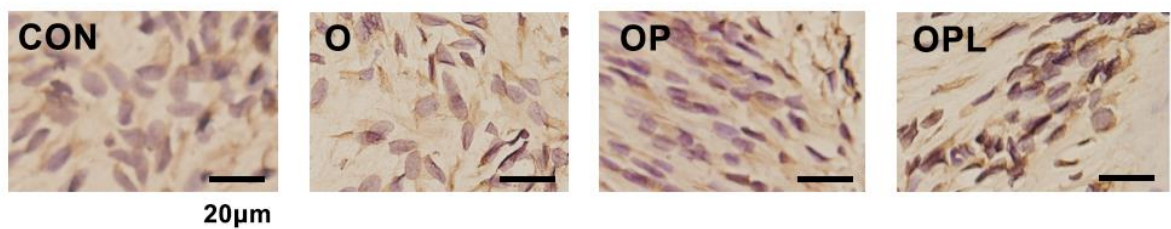


Figure S2: Expression of immunohistochemical inflammatory marker TNF- α (scale bar = 20 μ m) .

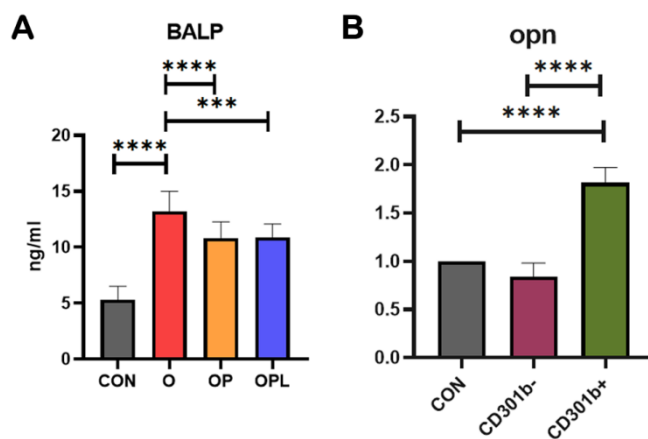


Figure S3: (A)Expression of bone metabolic marker BALP. (B)Expression of osteogenesis-related gene OPN in BMSC under stretching force after osteogenesis induction was detected using qRT-PCR.

Values are presented as mean \pm SD. ***P < 0.001, ****P < 0.000 1. n=3-6.

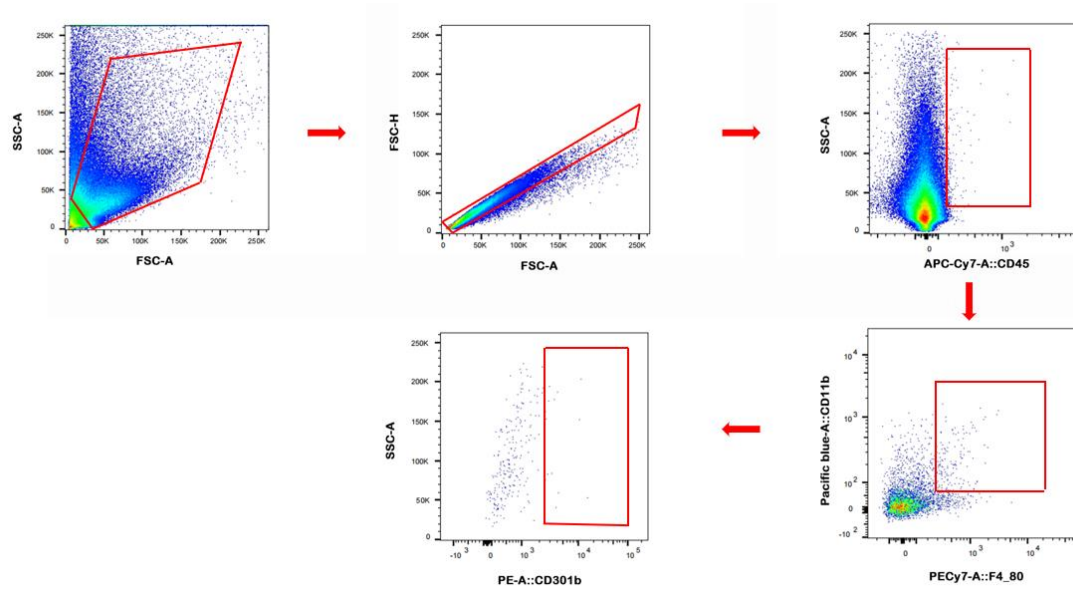


Figure S4: Gating strategy of CD301b+ macrophages.

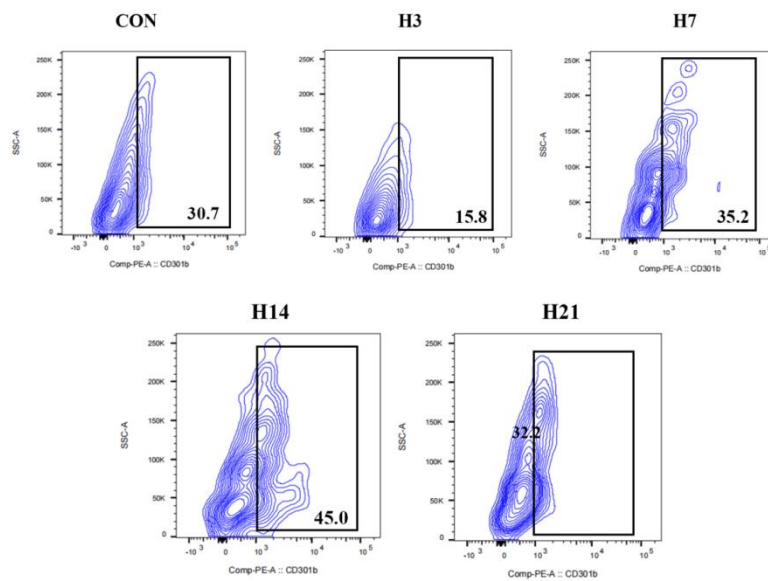


Figure S5: Flow cytometry plots of CD301b+ macrophage content around orthodontically mobile teeth in orthodontic models after 3, 7, 14, and 21 days of periodontitis unlining in control and periodontal models.