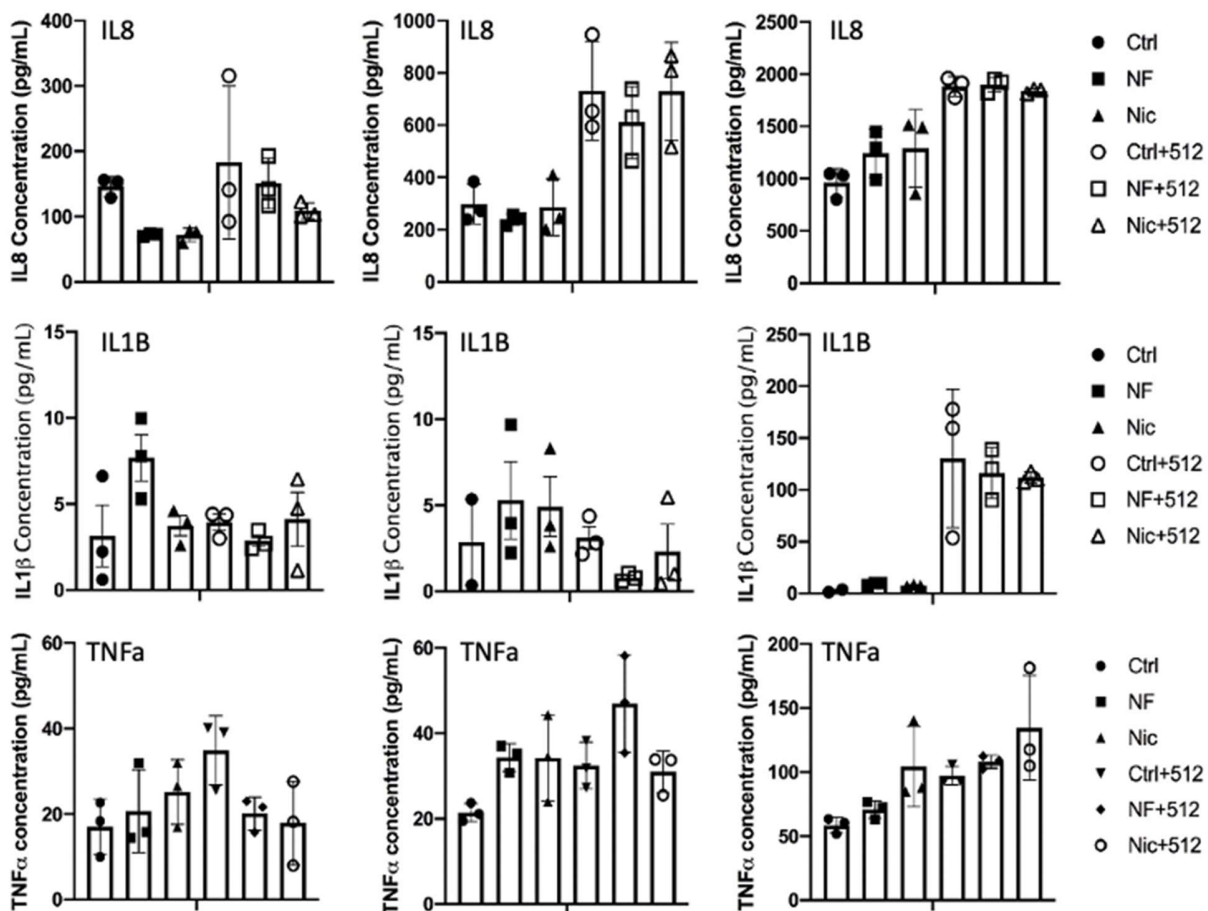
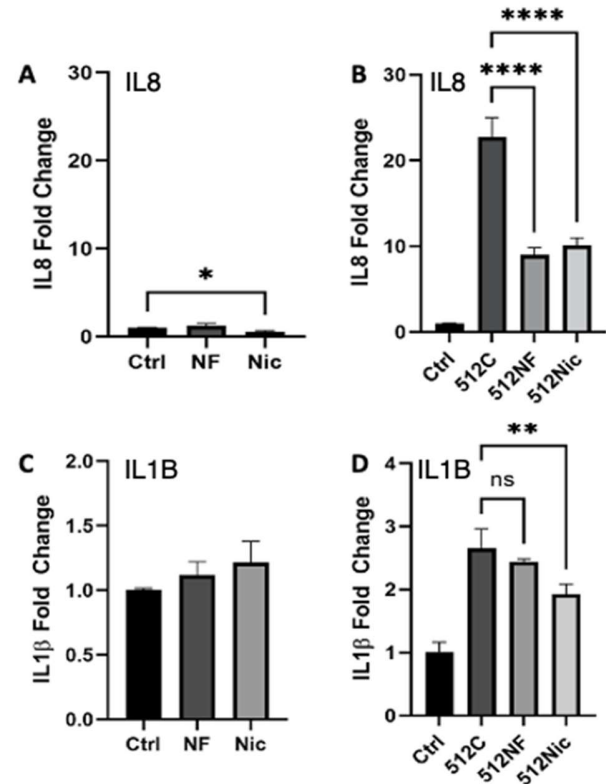


**Figure S1.** The attachment capacity varies between *S. aureus* strains and sequence types. *S. aureus* strains from smokers (S042, S039, S072) and non-smokers (547, 512, 528-11) were co-cultured with OKF6 cells for 3 hours (MOI  $10^{-3}$ ), attached bacteria was serially diluted and plated.



**Figure S2.** *S. aureus* does induce an epithelial inflammatory response when co-cultured (MOI  $10^{-3}$ ) with epithelial oral cells OKF6. The release of IL8, IL1 $\beta$  and TNF $\alpha$  were measured by ELISA of conditioned media from OKF6 cells pre-exposed to E-cig aerosol 30 min (6 puffs 30 second interval), allowed to recover for 24 hours, followed by co-cultured with *S. aureus* 512

at MOI 10-3). Conditioned media was collected and analyzed at 3 hours (left panels), 7 hours (middle panels), and 24 hours (right panels).



**Figure S3.** E-cig aerosol decreased the expression of proinflammatory cytokines IL8 and IL1β. OKF6 cells were pre-exposed to e-cig aerosol and co-cultured with *S. aureus* 512 (MOI 10-2). Expression of the proinflammatory cytokines IL8 (A,B), and IL1β (C,D) was measured by qRT-PCR. \* P<0.0001.