

Supplementary data

Figure 1A. MFN2 protein expression in LD pigmentation model

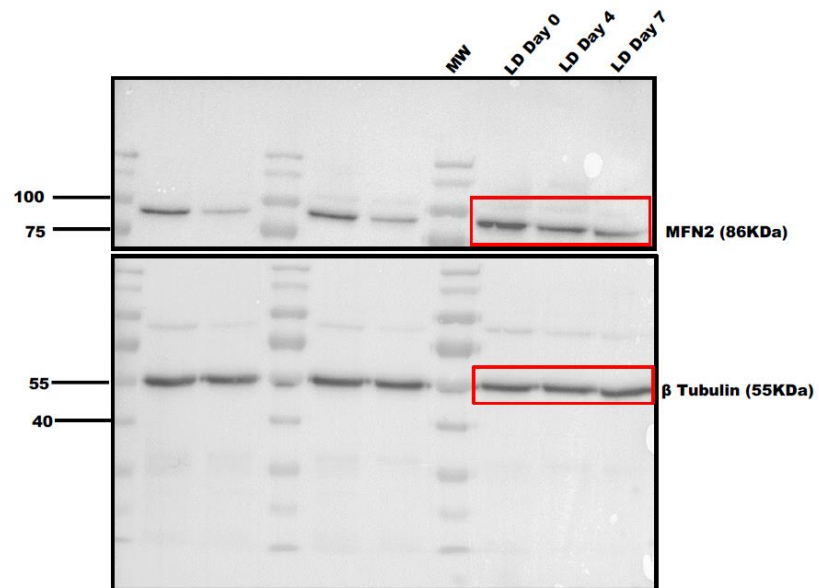


Figure 1C. MFN2 protein expression in LP-DP primary human melanocytes

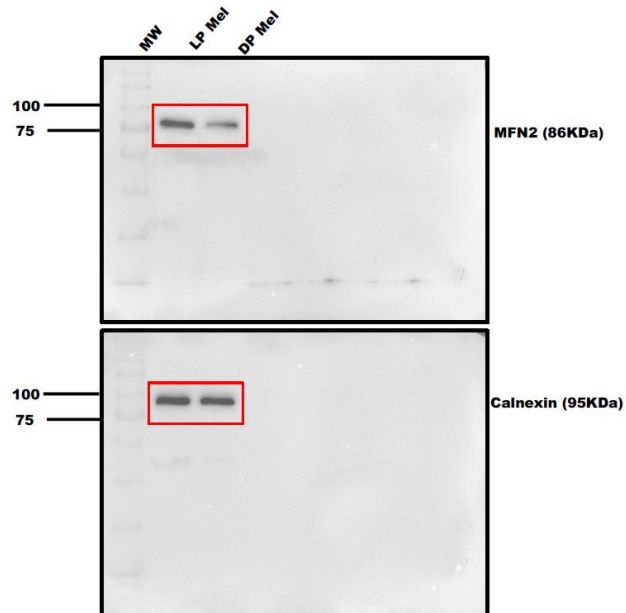


Figure 2A. siRNA based silencing of MFN2 in B16 cells

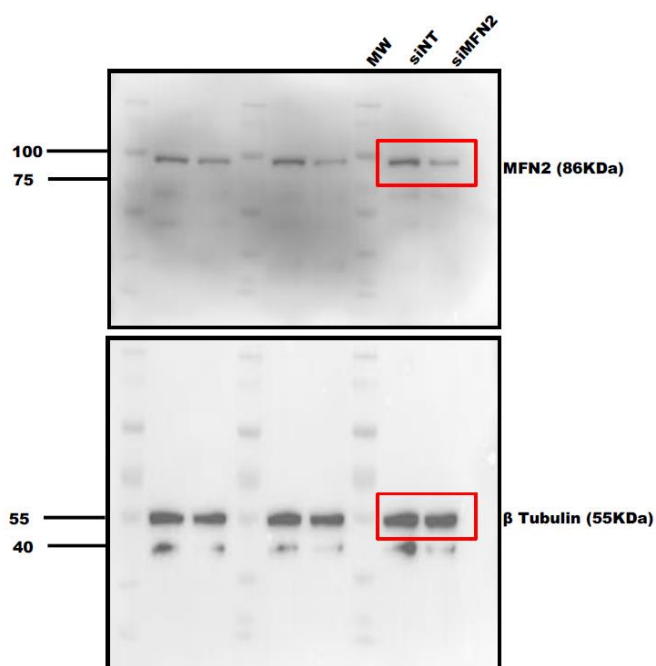


Figure 2C. shRNA mediated stable knockdown of MFN2 in B16 cells

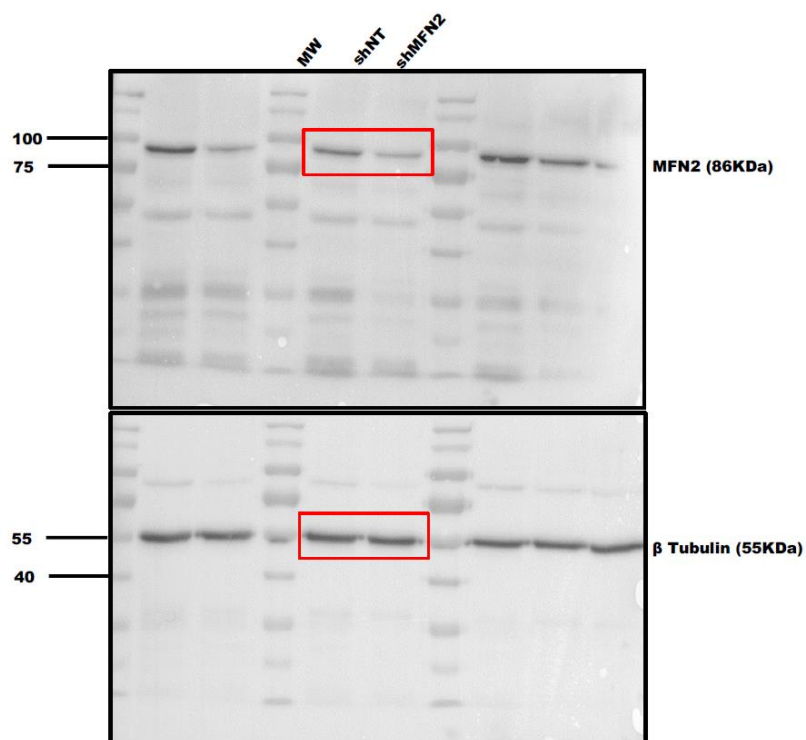


Figure 3A. Ectopic expression of YFP tagged human MFN2 in shMFN2 stable B16 cells

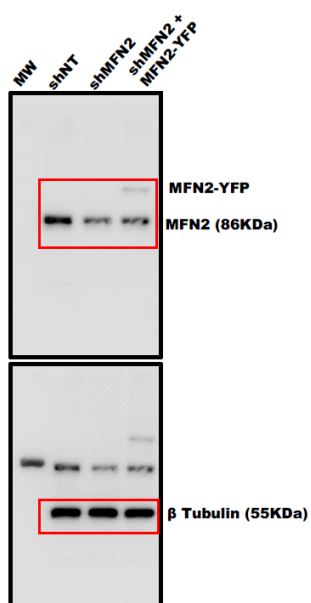


Figure 5A. Protein expression of Gp100 in shNT and shMFN2 stable cells on LD Day7

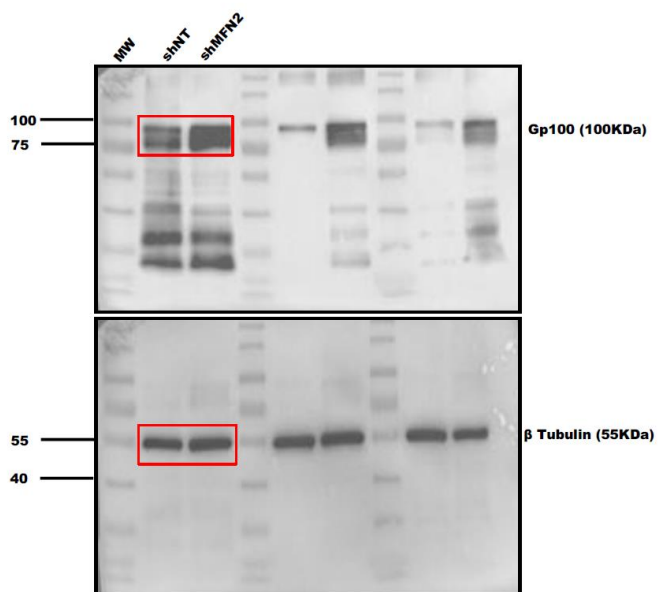


Figure 5B. DOPA assay for tyrosinase enzyme activity and protein expression of tyrosinase in shNT and shMFN2 stable cells

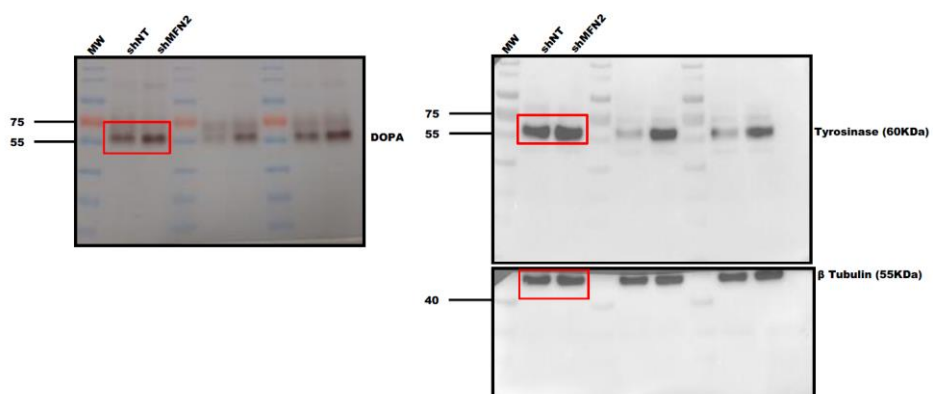


Figure 5C. Protein expression of DCT in shNT and shMFN2 stable cells

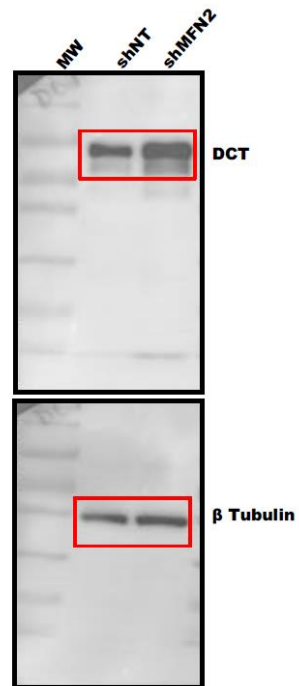


Figure 5D. DOPA assay for tyrosinase enzyme activity and protein expression of tyrosinase in shNT, shMFN2 and shMFN2+ MFN2-YFP cells

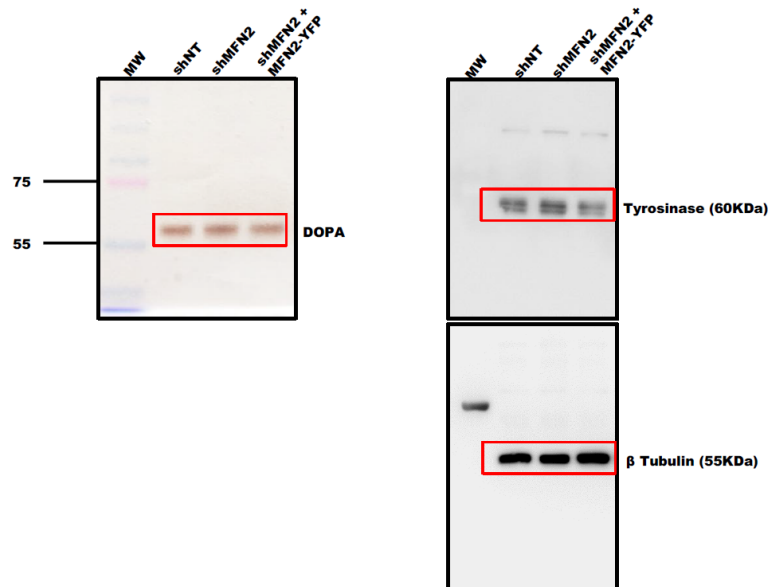


Figure 5E. Protein expression of Gp100 in shNT, shMFN2 and shMFN2+ MFN2-YFP cells

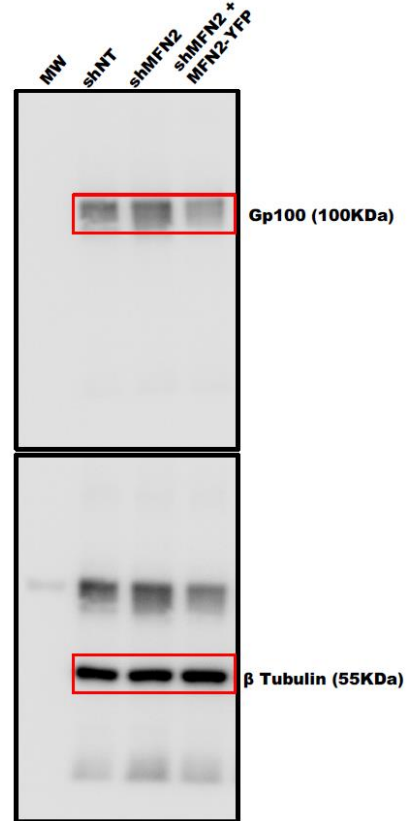


Figure 5F. Protein expression of DCT in shNT, shMFN2 and shMFN2+ MFN2-YFP cells

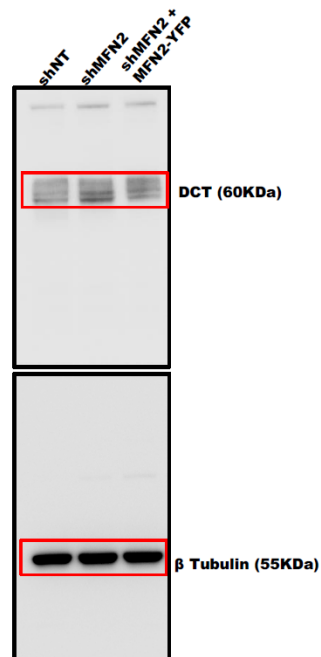


Figure 6A. DRP1 protein expression in LD pigmentation model

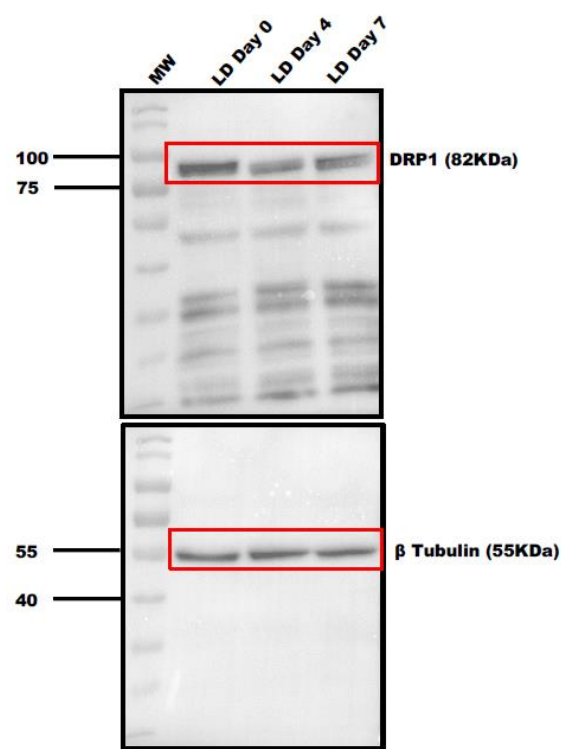


Figure 6C. DRP1 protein expression in LP-DP primary human melanocytes

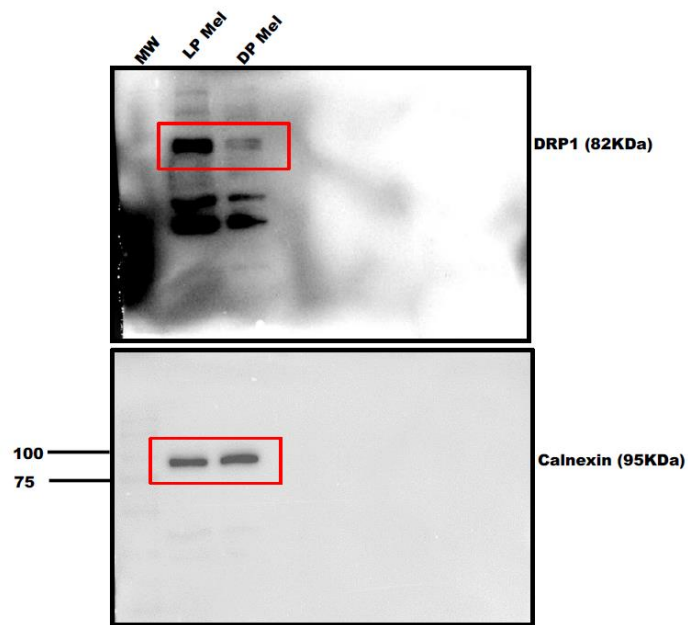


Figure 6E. MFN1 protein expression in LD pigmentation model

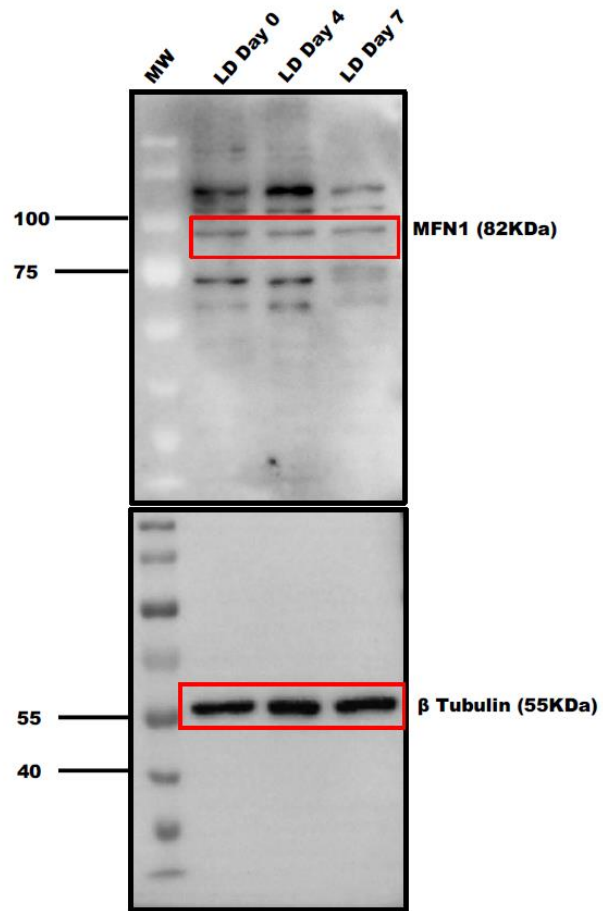


Figure 6G. MFN1 protein expression in LP-DP primary human melanocytes

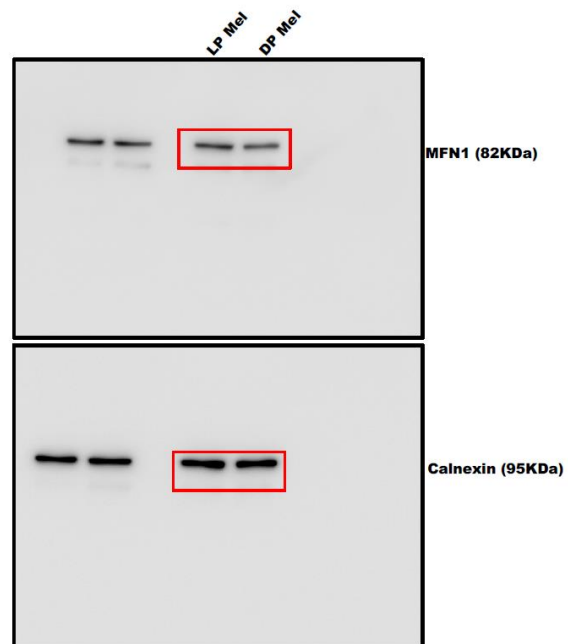


Figure 7A. siRNA based silencing of DRP1 in B16 cells

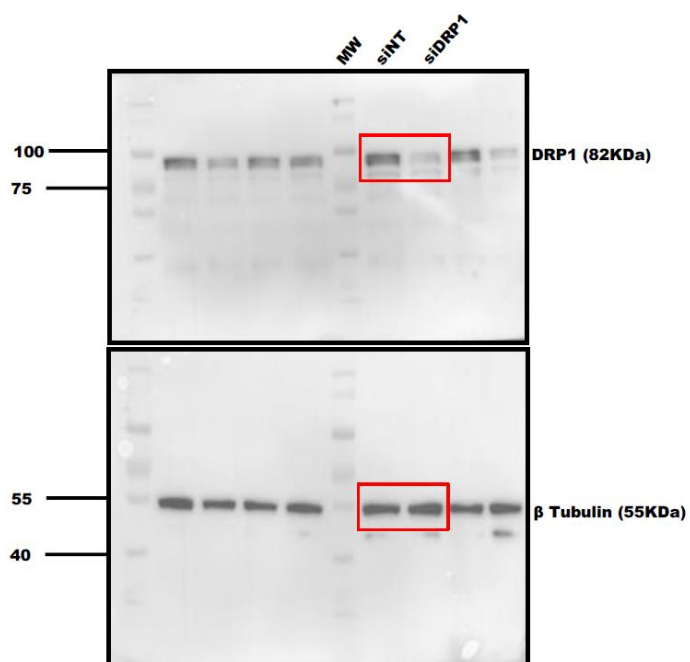


Figure 7C. shRNA mediated knockdown of DRP1 in B16 cells

