

Figure S1. Differentiating CBP^{fl/fl} neurospheres infected with Cre-recombinase encoding viruses do not express CBP. Representative images of differentiating secondary neurospheres infected with control (DsRed) or Cre-Recombinase-encoding Lentiviruses stained with antibodies specific for CBP and contrastained with DAPI. Scale bars: 100 μ m

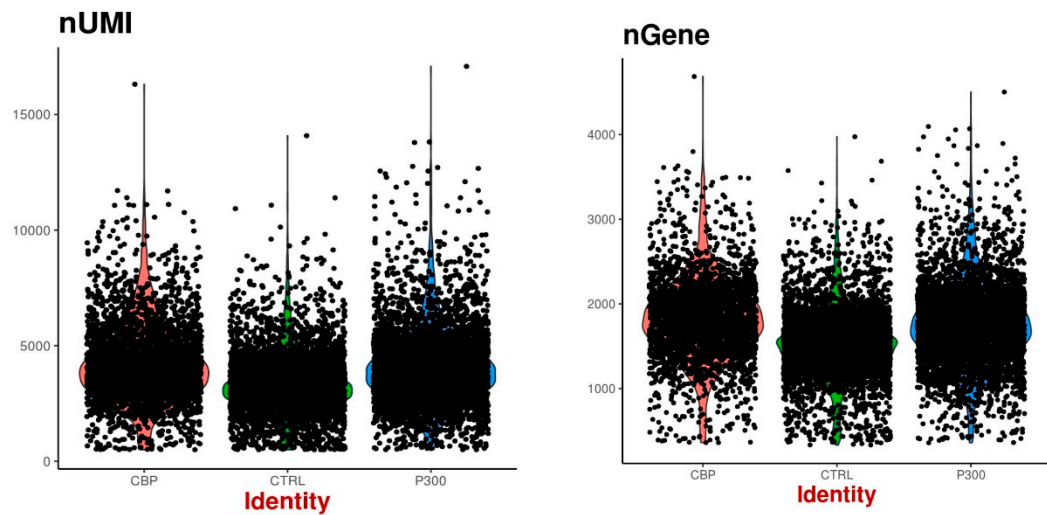


Figure S2. Sensitivity analysis of snRNA-seq. Violin plots show the distribution of the number of transcripts (left, scored by UMIs) and genes (right) detected per cell for differentiating neurospheres from control (CTRL), $CBP^{f/f}$ (CBP) and $p300^{f/f}$ (P300) neurospheres. UMIs: unique molecular identifiers.