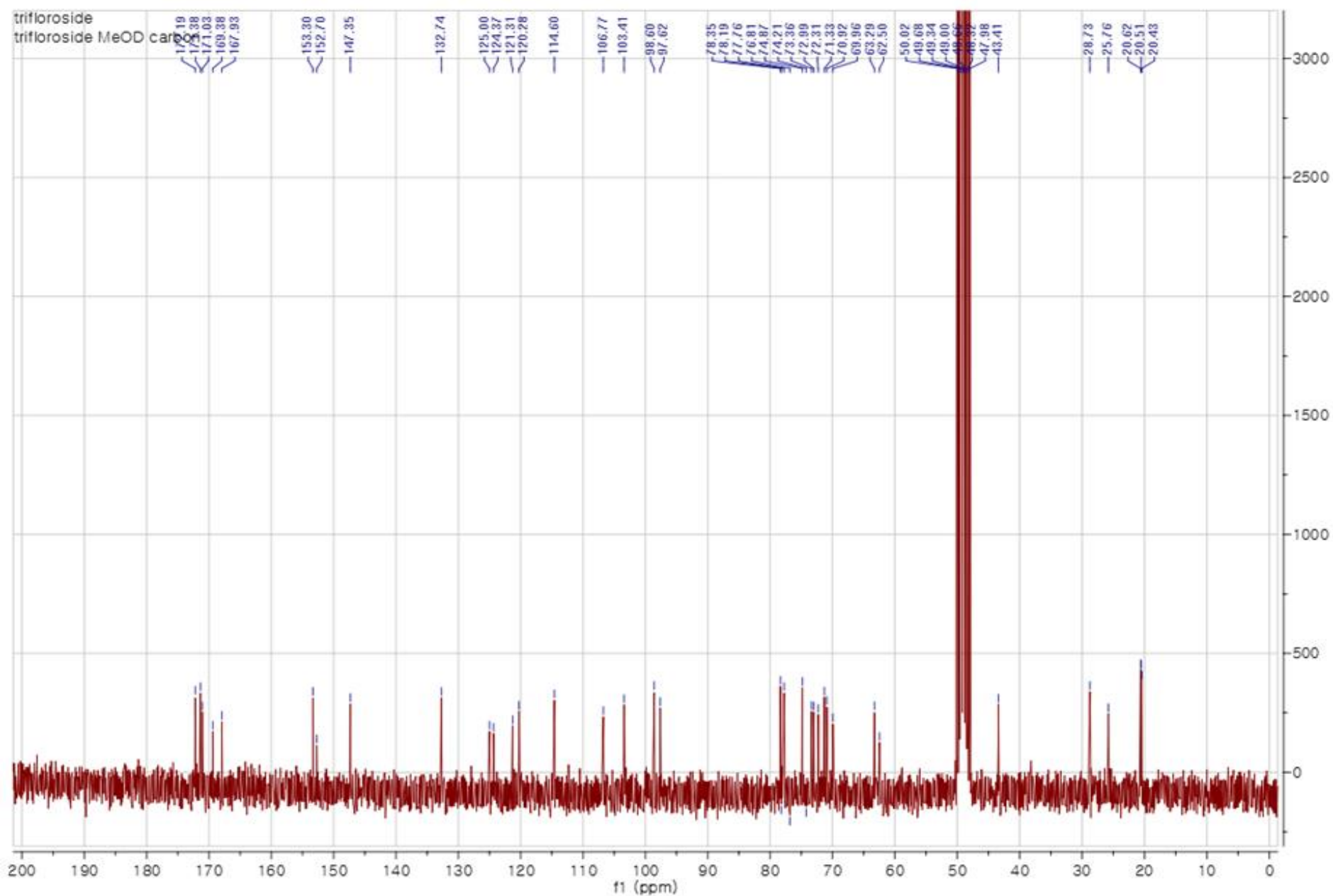


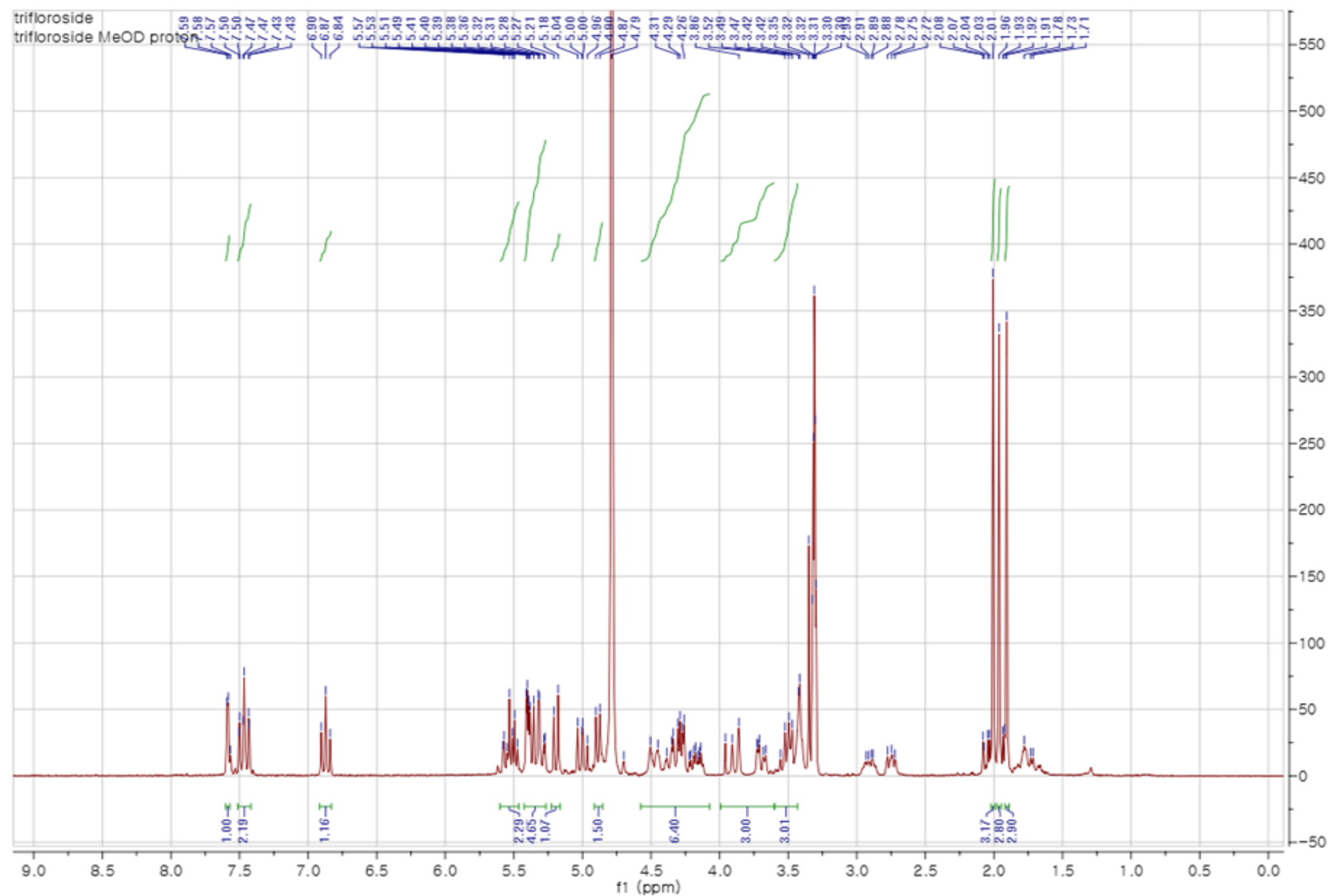
Supplementary Figure Legend

- **Supplementary Figure S1.** NMR spectra of TriFs from *Gentianae Scabrae Radix* roots . **(A, B)** ^{13}C NMR spectrum (A) and ^1H NMR spectrum (B)
- **Supplementary Figure S2.** Effects of TriFs on cell viability in pre-osteoblasts. Cell viability was detected by BrdU incorporation assay. Data shown are from three independent trials.

A



B



**Supplementary
Fig. S2**

