

Figure 3C

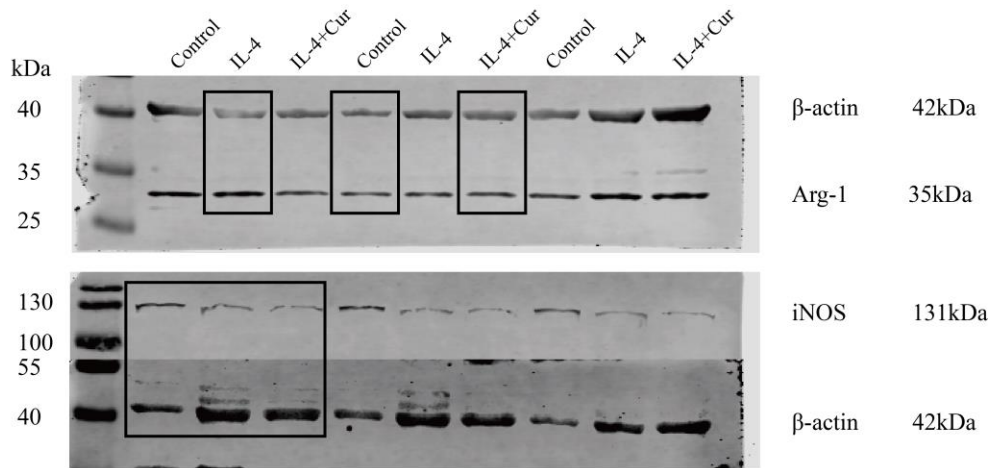


Figure 5B

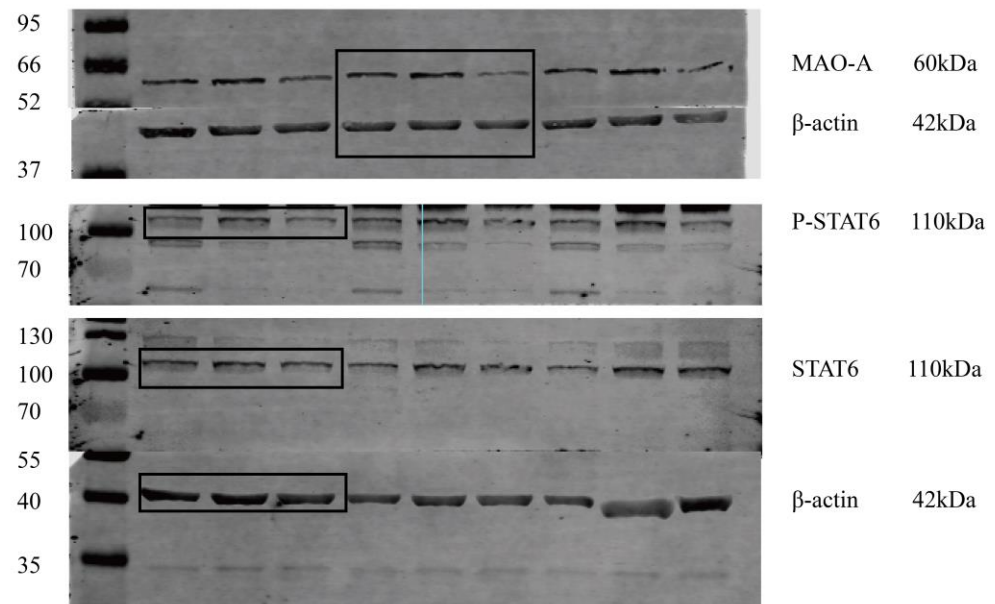


Figure 4H

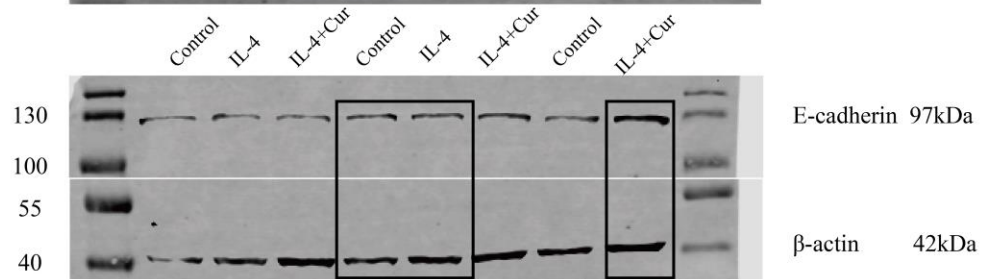


Figure S1. Original images of Western blot. The images which are used in the manuscript are marked with boxes.

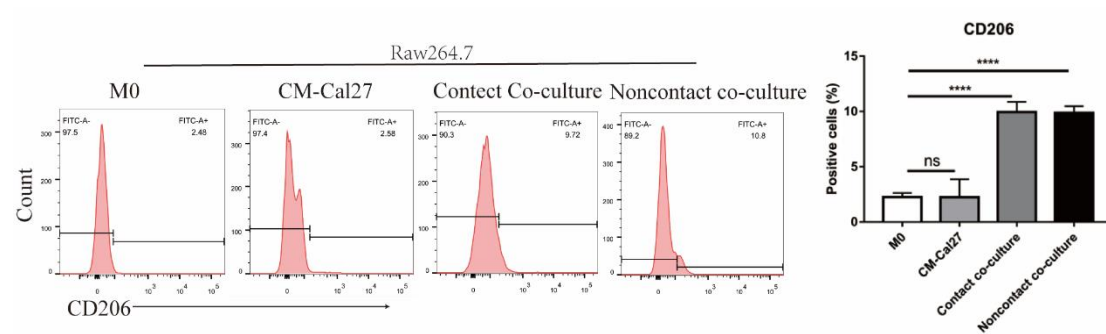


Figure S2. Flow cytometric analysis of surface markers of CD206 in Raw264.7 cells polarized by various methods. Data are represented as mean $\pm$ SD (n=3). P values were determined by one-way analysis of variance (ANOVA). \*P < 0.05; \*\*P < 0.01; \*\*\*P < 0.001.

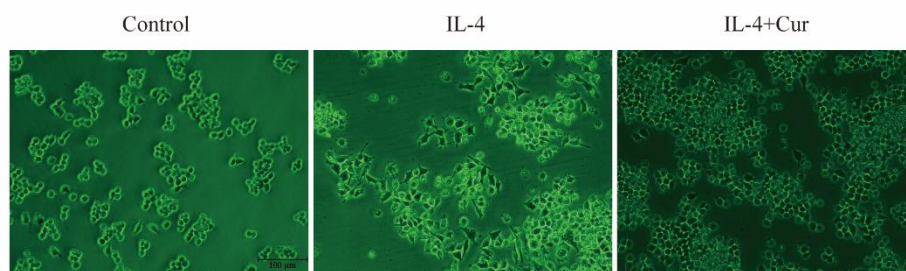


Figure S3. Representative micrographs of morphology changes of Macrophages.

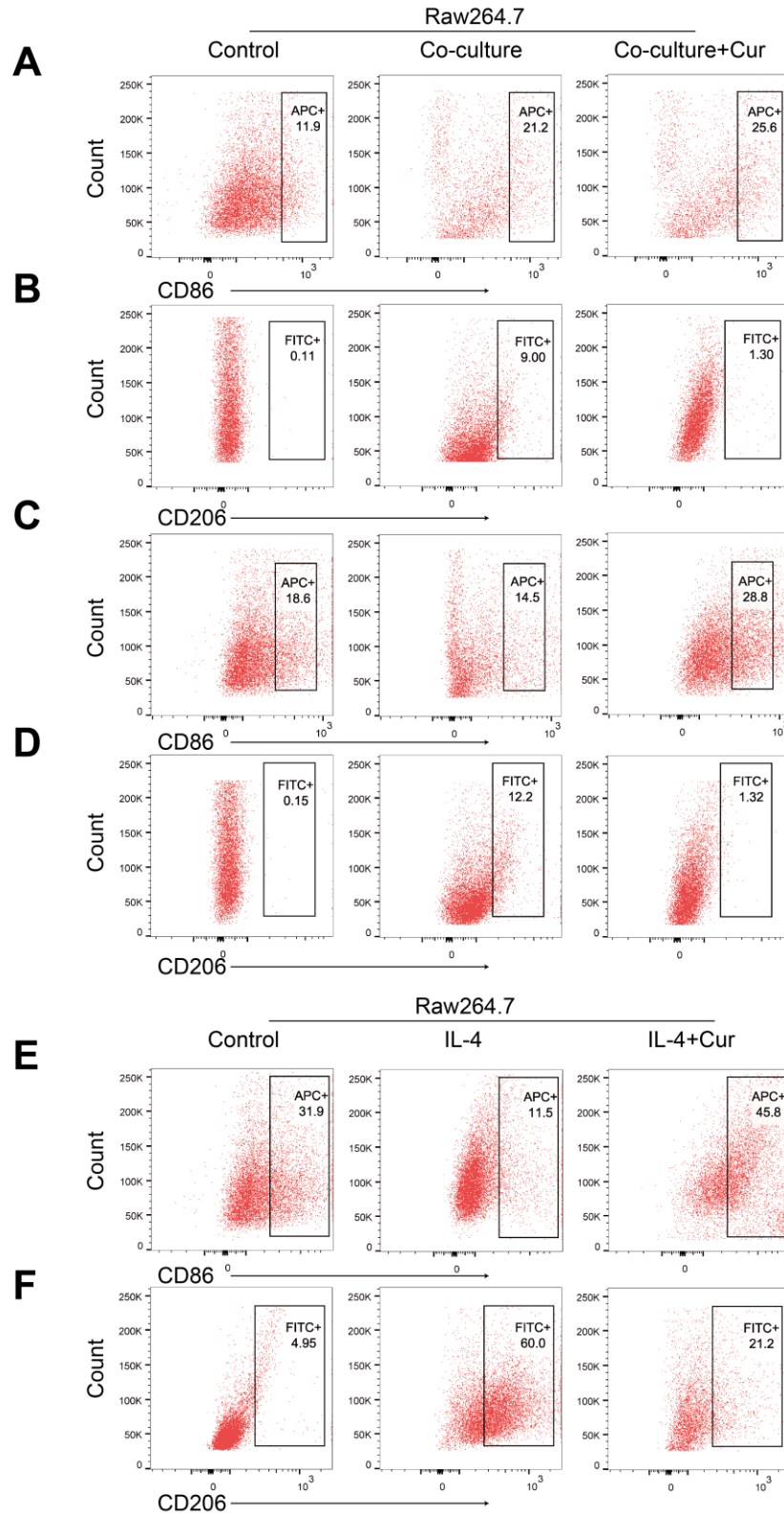


Figure S4. FACS results in the above figure A–B, C–D, and E–F also have been presented in the form of histograms in the revised manuscript (Figure 2B, D), (Figure 2F, H), and (Figure 3G, I).